



Brampton Park Huntingdon

A collection of 2,3,4 and 5 bedroom homes
in a stunning location.

Brampton Park is situated in the Cambridgeshire village of Brampton, close to Huntingdon and within commuting distance of Peterborough, Cambridge and London.

Brampton enjoys a host of amenities and facilities including shops, pubs, restaurants, doctors, dentists, a nursery and primary school.

Still retaining its village green, historic buildings and ancient parish church, of particular interest are Brampton's connections to the

diarist Samuel Pepys. Brampton enjoys a number of meeting halls, serving as venues for a host of events and activities, plus playing fields, a children's play area and skate park.

There is an array of open spaces nearby, including the River Great Ouse, Portholme Meadow, Hinchbrooke Country Park, Brampton Wood and Brampton Golf Course, while a day at the races can be enjoyed at Huntingdon Racecourse.

Brampton Park

Central Avenue, Brampton, Huntingdon PE28 4QL | 01697 602 064

lindenhomes.co.uk/bramptonpark

Linden
HOMES

Development layout



- 5 bedroom home**
- The Lutyens
 - The Nash
-
- 4 bedroom home**
- The Burnet
 - The Kempthorne / Kempthorne VI
 - The Moulton
 - The Mylne
 - The Pembroke
-
- 3 bedroom home**
- The Eveleigh
 - The Mountford
 - The Wyatt
-
- 2 bedroom home**
- The Oakley
 - The Oakley V1
-
- ▶ garage entrance ◻ embankment/slope
 ▶ drive through/ ◻ shed
 car port entrance
 v visitor parking space

Not to scale. Trees and landscaping are indicative only and may alter during construction. The trees, shrubs and gardens shown are illustrative only. Finishes and materials may vary from those shown here. Please ask your Sales consultant for specific details.



Around the local neighbourhood

- | | | | | | |
|----------|---------------------------------|----------|-----------------------------|-----------|---------------------------------|
| 1 | Hinchingsbrooke Country Park | 5 | Brampton Dental Practice | 9 | St Mary Magdalene Parish Church |
| 2 | Brampton Doctor's Surgery | 6 | The Brampton Day Nursery | 10 | The Black Bull at Brampton |
| 3 | Brampton Village Primary School | 7 | Playing fields & skate park | 11 | The Dragoon Inn |
| 4 | Village shops | 8 | Brampton Post Office | 12 | Brampton Park Golf Club |

Distances shown are by road (Source: Google). Fastest journey times are shown (Source: National Rail Enquiries).
2338062/May 2022.

lindenhomes.co.uk/bramptonpark

Linden
HOMES



The Moulton 4 bedroom home

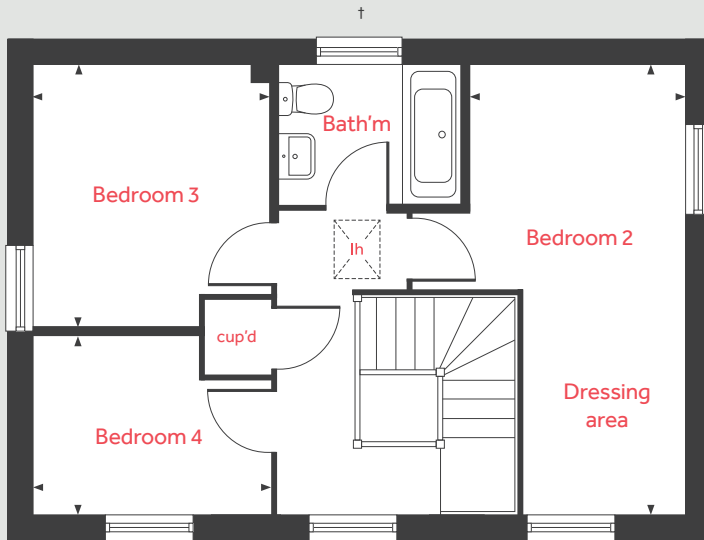
Brampton Park

Central Avenue, Brampton, Huntingdon PE28 4QL | 01697 602 064

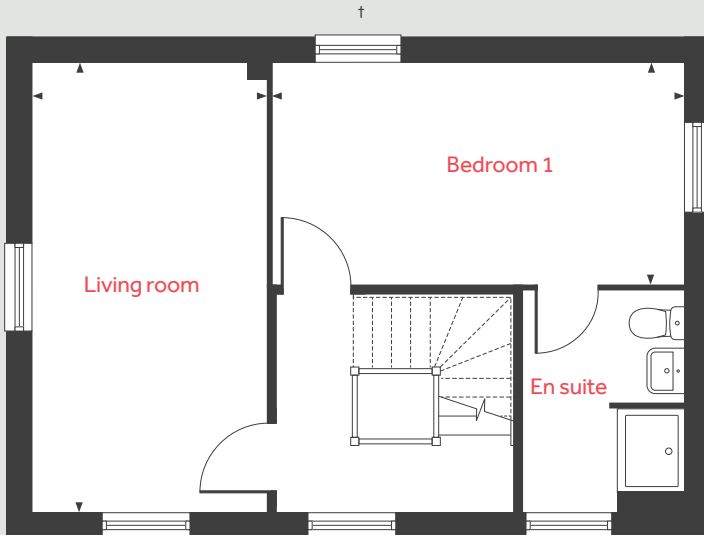
[lindenhomes.co.uk/bramptonpark](https://www.lindenhomes.co.uk/bramptonpark)

Linden
HOMES

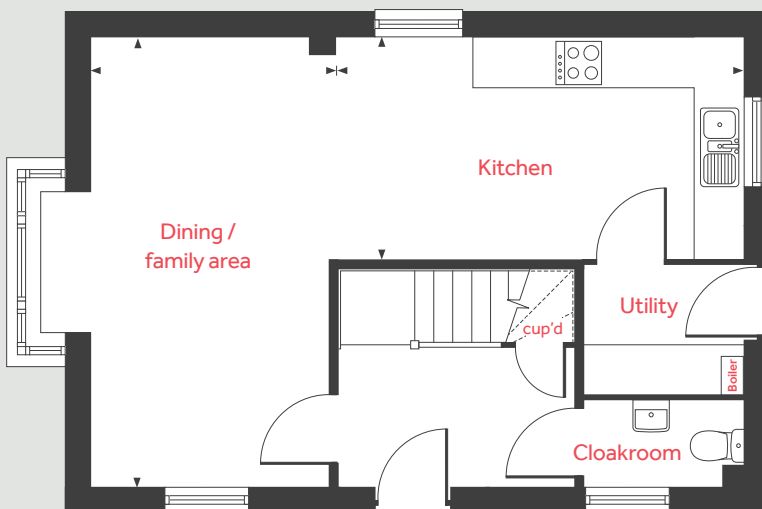
Second floor



First floor



Ground floor



The Moulton

4 bedroom home

Ground floor

Dining / family area

5.46m x 2.87m 17'10" x 9'4"

Kitchen

4.97m x 2.68m 16'4" x 8'10"

First floor

Living room

5.46m x 2.87m 17'10" x 9'4"

Bedroom 1

4.96m x 2.67m 16'3" x 8'9"

Second floor

Bedroom 2 (including dressing area)

5.46m x 2.64m 17'10" x 8'7"

Bedroom 3

3.19m x 2.86m 10'5" x 9'4"

Bedroom 4

2.86m x 2.17m 9'4" x 7'1"

lh loft hatch ◀ ▶ measuring points
cup'd cupboard

Please note, floorplans and dimensions are taken from architectural drawings and are for guidance only. Dimensions stated are within a tolerance of plus or minus 50mm. Overall dimensions are usually stated and there may be projections into these. With our continual improvement policy we constantly review our designs and specification to ensure we deliver the best product to our customers. Computer generated images not to scale. Finishes and materials may vary and landscaping is illustrative only. Kitchen layouts are indicative only and may change. To confirm specific details on our homes please ask your Sales consultant. 1365329/April 2021.

Linden HOMES



The Oakley 2 bedroom home

Brampton Park

Central Avenue, Brampton, Huntingdon PE28 4QL | 01697 602 064

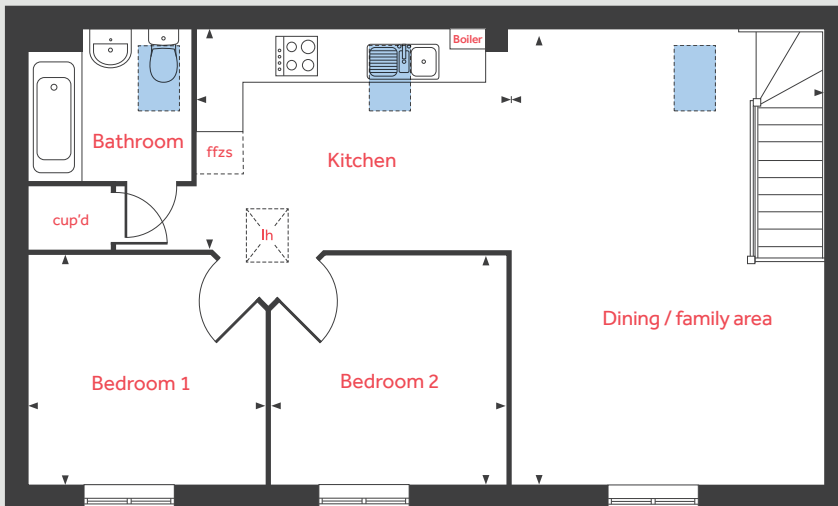
lindenhomes.co.uk/bramptonpark

Linden
HOMES

The Oakley

2 bedroom home

First floor



First floor

Kitchen

4.15m x 2.87m 13'7" x 9'5"

Dining / family area

6.04m x 3.23m 19'10" x 10'7"

Bedroom 1

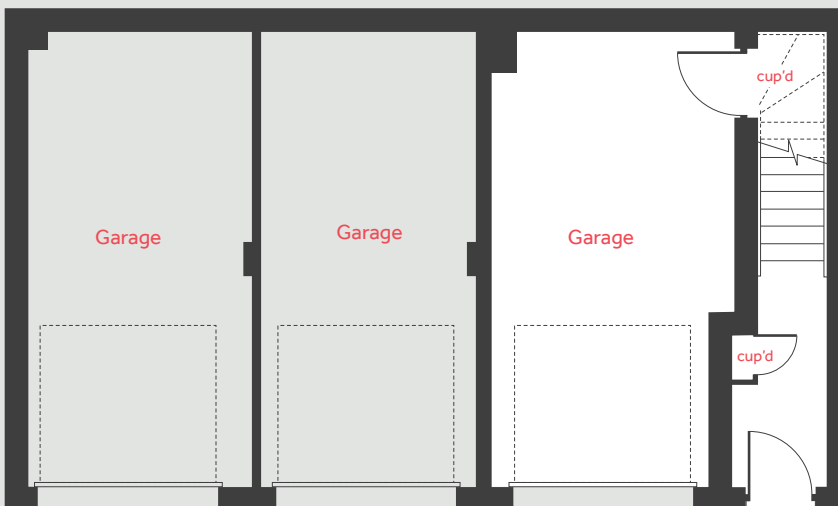
3.17m x 3.09m 10'5" x 10'2"

Bedroom 2

3.15m x 3.09m 10'4" x 10'2"

lh	loft hatch	■	velux window
cup'd	cupboard	◀ ▶	measuring points
ffzs	fridge freezer space		

Ground floor



Please note, floorplans and dimensions are taken from architectural drawings and are for guidance only. Dimensions stated are within a tolerance of plus or minus 50mm. Overall dimensions are usually stated and there may be projections into these. With our continual improvement policy we constantly review our designs and specification to ensure we deliver the best product to our customers. Computer generated images not to scale. Finishes and materials may vary and landscaping is illustrative only. Kitchen layouts are indicative only and may change. To confirm specific details on our homes please ask your Sales consultant. 1365329/April 2021.

Linden
HOMES



The Oakley V1 2 bedroom home

Brampton Park

Central Avenue, Brampton, Huntingdon PE28 4QL | 01697 602 064

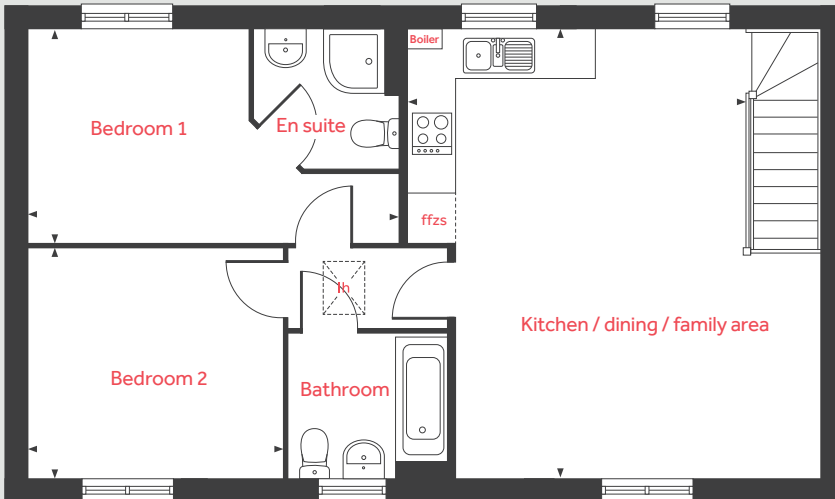
[lindenhomes.co.uk/bramptonpark](https://www.lindenhomes.co.uk/bramptonpark)

Linden
HOMES

The Oakley V1

2 bedroom home

First floor



First floor

Kitchen / dining / family area

6.04m x 4.54m 19'10" x 14'11"

Bedroom 1

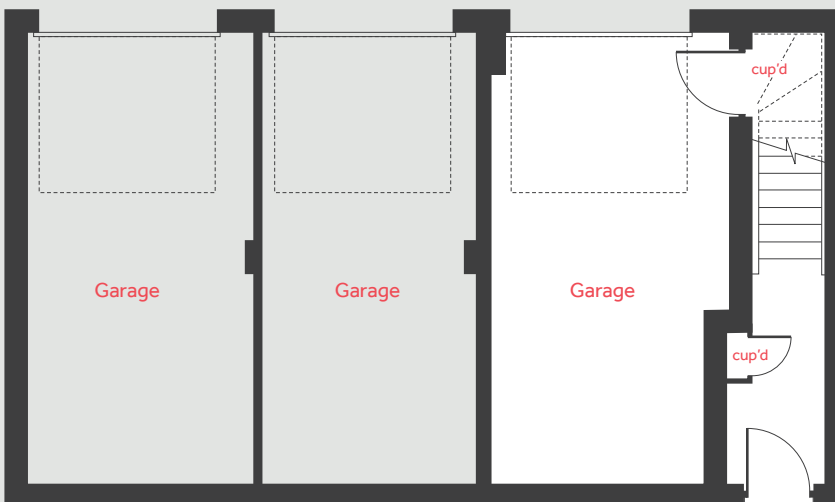
4.99m x 2.88m 16'4" x 9'5"

Bedroom 2

3.42m x 3.09m 11'3" x 10'2"

lh loft hatch measuring points
ffzs fridge freezer space

Ground floor



Please note, floorplans and dimensions are taken from architectural drawings and are for guidance only. Dimensions stated are within a tolerance of plus or minus 50mm. Overall dimensions are usually stated and there may be projections into these. With our continual improvement policy we constantly review our designs and specification to ensure we deliver the best product to our customers. Computer generated images not to scale. Finishes and materials may vary and landscaping is illustrative only. Kitchen layouts are indicative only and may change. To confirm specific details on our homes please ask your Sales consultant. 1365329/April 2021.

Linden
HOMES



The Burnet 4 bedroom home

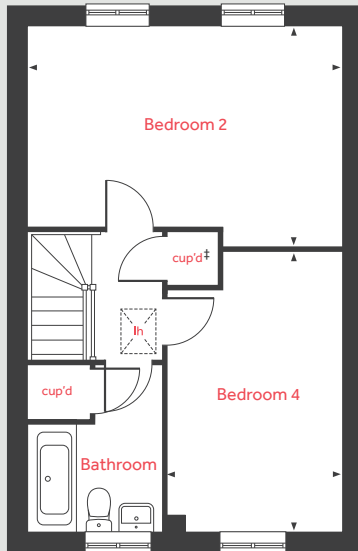
Brampton Park

Central Avenue, Brampton, Huntingdon PE28 4QL | 01697 602 064

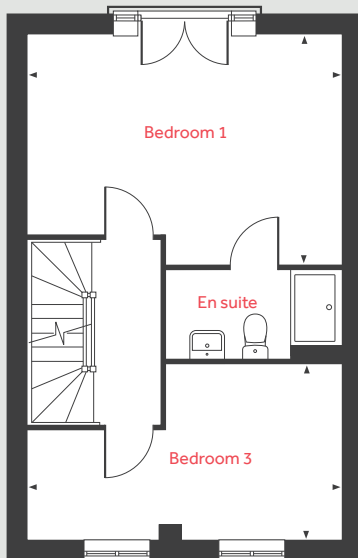
[lindenhomes.co.uk/bramptonpark](https://www.lindenhomes.co.uk/bramptonpark)

Linden
HOMES

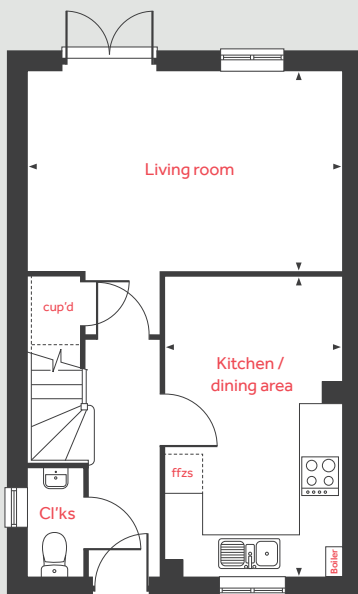
Second floor



First floor



Ground floor



The Burnet

4 bedroom home

Ground floor

Living room

4.98m x 3.20m 16'4" x 10'6"

Kitchen / dining area

4.78m x 2.80m 15'8" x 9'2"

First floor

Bedroom 1

4.98m x 3.69m 16'4" x 12'1"

Bedroom 3

4.98m x 2.80m 16'4" x 9'2"

Second floor

Bedroom 2

4.98m x 3.52m 16'4" x 11'6"

Bedroom 4

4.47m x 2.80m 14'8" x 9'2"

lh loft hatch ffzs fridge freezer space
cup'd cupboard ◀ ▶ measuring points

Please note, floorplans and dimensions are taken from architectural drawings and are for guidance only. Dimensions stated are within a tolerance of plus or minus 50mm. Overall dimensions are usually stated and there may be projections into these. With our continual improvement policy we constantly review our designs and specification to ensure we deliver the best product to our customers. Computer generated images not to scale. Finishes and materials may vary and landscaping is illustrative only. Kitchen layouts are indicative only and may change. To confirm specific details on our homes please ask your Sales consultant. 1365329/April 2021.

Linden
HOMES



The Eveleigh 3 bedroom home

Brampton Park

Central Avenue, Brampton, Huntingdon PE28 4QL | 01697 602 064

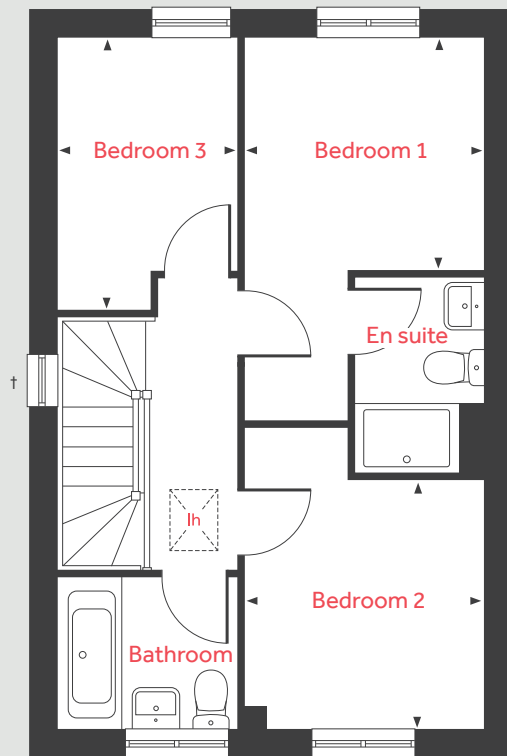
lindenhomes.co.uk/bramptonpark

Linden
HOMES

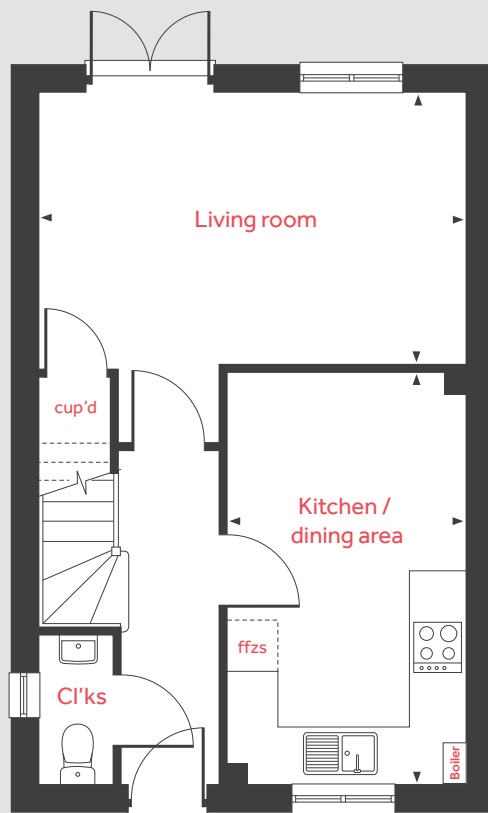
The Eveleigh

3 bedroom home

First floor



Ground floor



Ground floor

Living room

4.98m x 3.20m 16'4" x 10'6"

Kitchen / dining area

4.78m x 2.80m 15'8" x 9'2"

First floor

Bedroom 1

2.78m x 2.72m 9'1" x 8'11"

Bedroom 2

2.90m x 2.78m 9'6" x 9'1"

Bedroom 3

3.20m x 2.12m 10'6" x 6'11"

lh	loft hatch	ffzs	fridge freezer space
cup'd	cupboard	◀ ▶	measuring points

Please note, floorplans and dimensions are taken from architectural drawings and are for guidance only. Dimensions stated are within a tolerance of plus or minus 50mm. Overall dimensions are usually stated and there may be projections into these. With our continual improvement policy we constantly review our designs and specification to ensure we deliver the best product to our customers. Computer generated images not to scale. Finishes and materials may vary and landscaping is illustrative only. Kitchen layouts are indicative only and may change. To confirm specific details on our homes please ask your Sales consultant. 1365329/April 2021.

Linden
HOMES



The Kempthorne 4 bedroom home

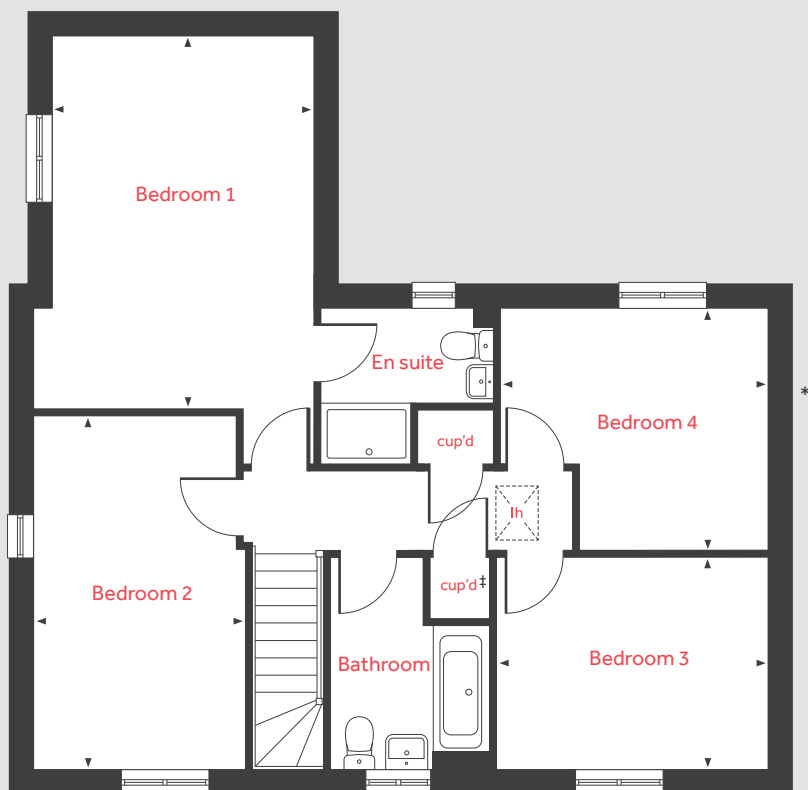
Brampton Park

Central Avenue, Brampton, Huntingdon PE28 4QL | 01697 602 064

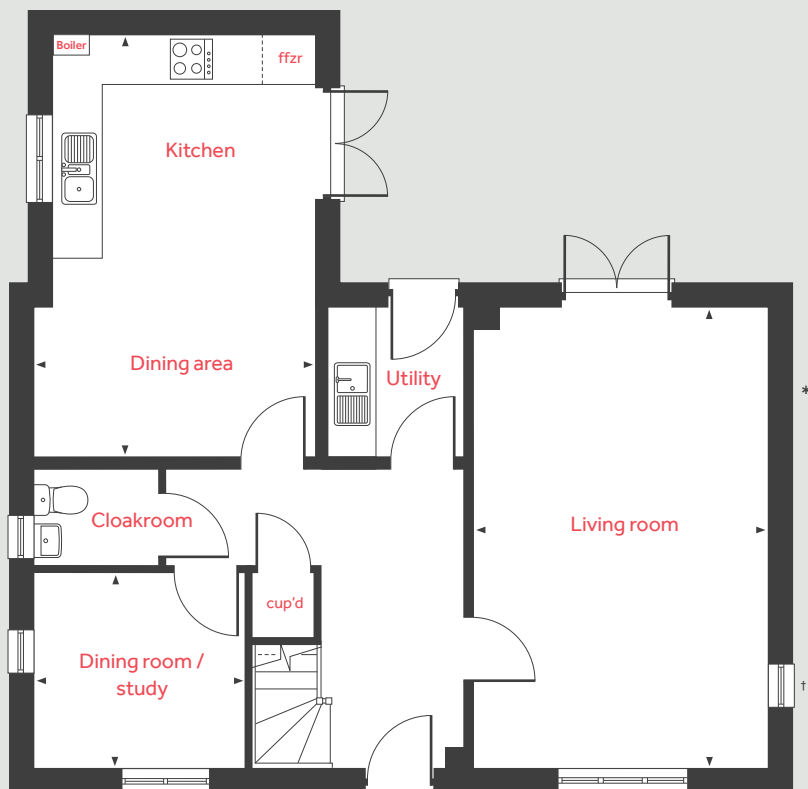
lindenhomes.co.uk/bramptonpark

Linden
HOMES

First floor



Ground floor



The Kempthorne

4 bedroom home

Ground floor

Living room

6.04m x 3.85m 19'9" x 12'7"

Kitchen / dining area

5.57m x 3.67m 18'3" x 12'0"

Dining room / study

2.78m x 2.57m 9'1" x 8'5"

First floor

Bedroom 1

4.87m x 3.45m 15'11" x 11'3"

Bedroom 2

4.69m x 2.78m 15'4" x 9'1"

Bedroom 3

3.52m x 2.80m 11'6" x 9'2"

Bedroom 4

3.50m x 3.16m 11'6" x 10'4"

lh loft hatch ffzr integrated fridge freezer
cup'd cupboard ◀ ▶ measuring points

Please note, floorplans and dimensions are taken from architectural drawings and are for guidance only. Dimensions stated are within a tolerance of plus or minus 50mm. Overall dimensions are usually stated and there may be projections into these. With our continual improvement policy we constantly review our designs and specification to ensure we deliver the best product to our customers. Computer generated images not to scale. Finishes and materials may vary and landscaping is illustrative only. Kitchen layouts are indicative only and may change. To confirm specific details on our homes please ask your Sales consultant. 1365329/April 2021.

Linden HOMES



The Lutyens 5 bedroom home

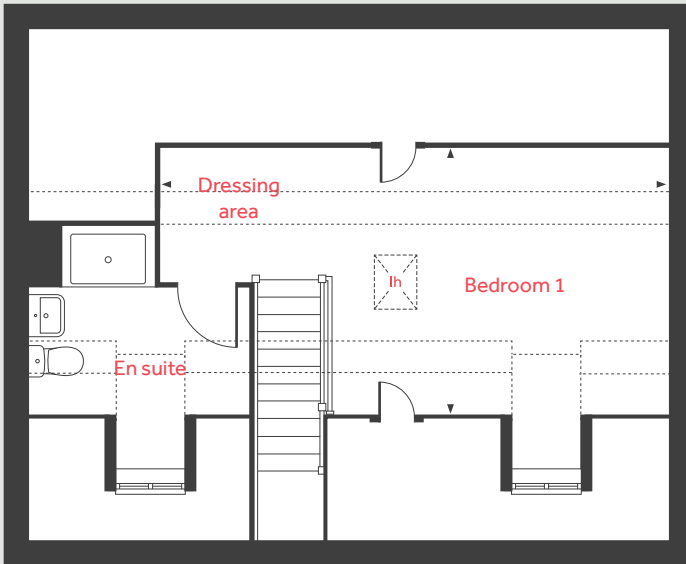
Brampton Park

Central Avenue, Brampton, Huntingdon PE28 4QL | 01697 602 064

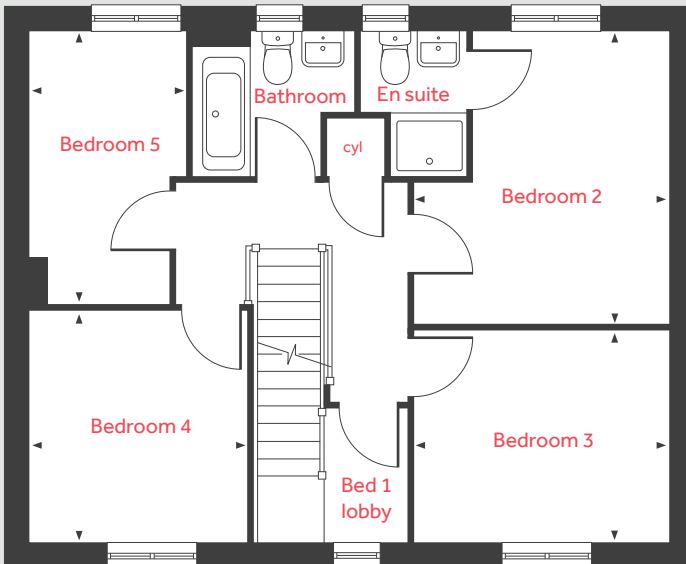
lindenhomes.co.uk/bramptonpark

Linden
HOMES

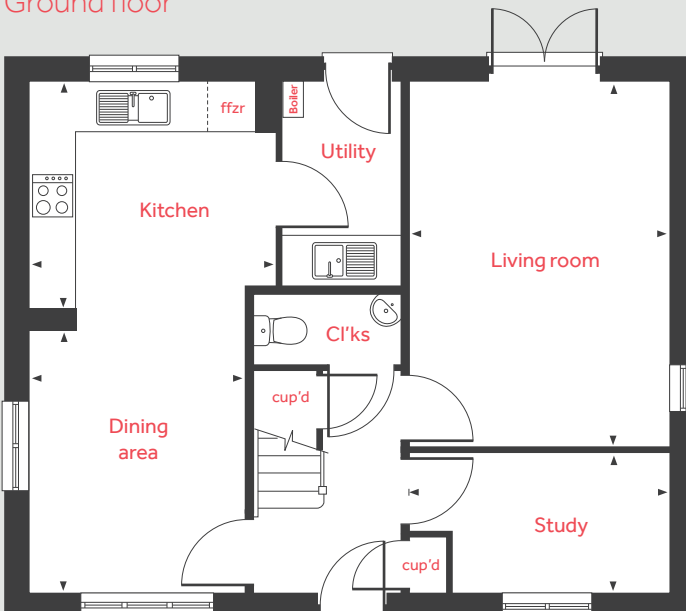
Second floor



First floor



Ground floor



The Lutyens

5 bedroom home

Ground floor

Living room	4.81m x 3.39m	15'9" x 11'1"
Kitchen	3.24m x 2.98m	10'7" x 9'9"
Dining area	3.46m x 2.81m	11'4" x 9'2"
Study	3.39m x 1.82m	11'1" x 5'11"

First floor

Bedroom 2	3.86m x 3.36m	12'8" x 11'0"
Bedroom 3	3.36m x 2.78m	11'0" x 9'1"
Bedroom 4	3.05m x 2.88m	10'0" x 9'5"
Bedroom 5	3.59m x 2.07m	11'9" x 6'9"

Second floor

Bedroom 1 / dressing area	6.69m x 3.50m	21'11" x 11'6"
---------------------------	---------------	----------------

lh	loft hatch	ffzr	integrated fridge freezer
cyl	hot water cylinder	◀ ▶	measuring points
cup'd	cupboard	- - -	reduced ceiling height

Please note, floorplans and dimensions are taken from architectural drawings and are for guidance only. Dimensions stated are within a tolerance of plus or minus 50mm. Overall dimensions are usually stated and there may be projections into these. With our continual improvement policy we constantly review our designs and specification to ensure we deliver the best product to our customers. Computer generated images not to scale. Finishes and materials may vary and landscaping is illustrative only. Kitchen layouts are indicative only and may change. To confirm specific details on our homes please ask your Sales consultant. 1365329/April 2021.

Linden
HOMES



The Mountford 3 bedroom home

Brampton Park

Central Avenue, Brampton, Huntingdon PE28 4QL | 01697 602 064

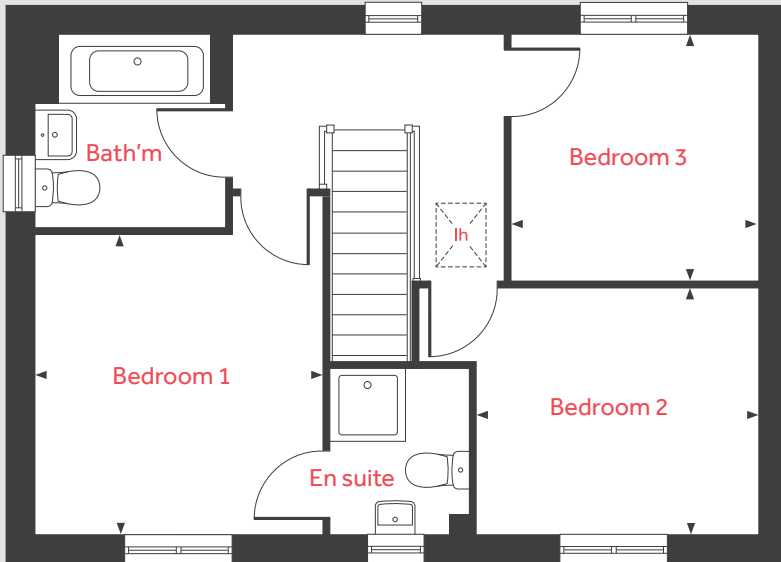
lindenhomes.co.uk/bramptonpark

Linden
HOMES

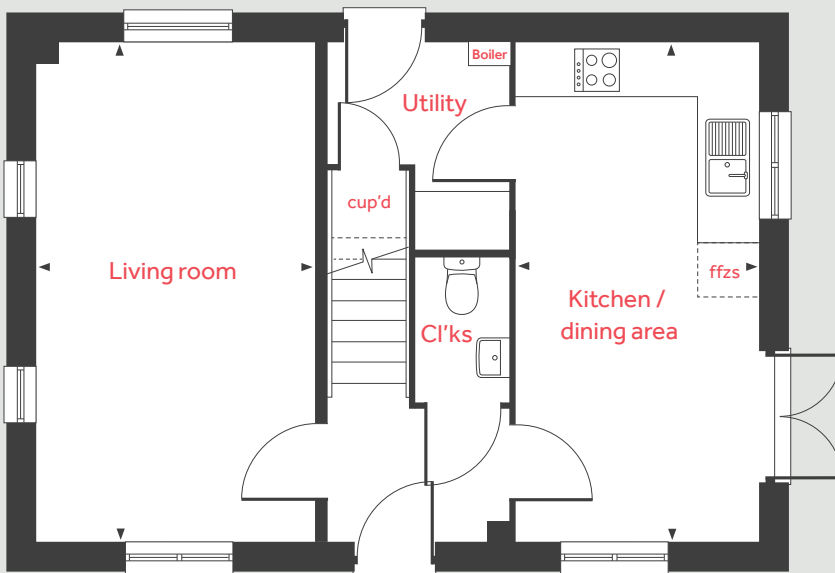
The Mountford

3 bedroom home

First floor



Ground floor



Ground floor

Living room

5.59m x 3.11m 18'4" x 10'2"

Kitchen / dining area

5.59m x 2.70m 18'4" x 8'10"

First floor

Bedroom 1

3.36m x 3.19m 11'0" x 10'5"

Bedroom 2

3.15m x 2.75m 10'4" x 9'0"

Bedroom 3

2.76m x 2.76m 9'0" x 9'0"

lh	loft hatch	ffzs	fridge freezer space
cup'd	cupboard	◀ ▶	measuring points

Please note, floorplans and dimensions are taken from architectural drawings and are for guidance only. Dimensions stated are within a tolerance of plus or minus 50mm. Overall dimensions are usually stated and there may be projections into these. With our continual improvement policy we constantly review our designs and specification to ensure we deliver the best product to our customers. Computer generated images not to scale. Finishes and materials may vary and landscaping is illustrative only. Kitchen layouts are indicative only and may change. To confirm specific details on our homes please ask your Sales consultant. 1365329/April 2021.

Linden
HOMES



The Mylne 4 bedroom home

Brampton Park

Central Avenue, Brampton, Huntingdon PE28 4QL | 01697 602 064

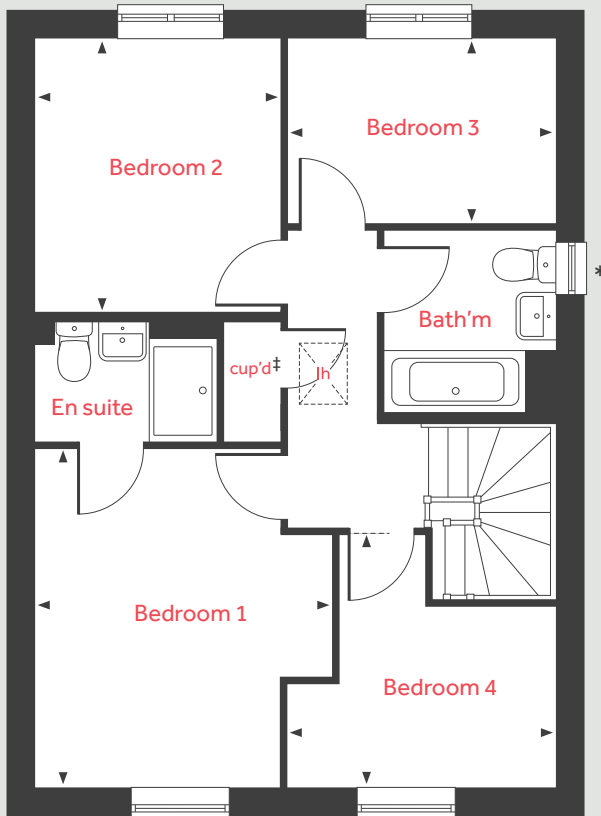
lindenhomes.co.uk/bramptonpark

Linden
HOMES

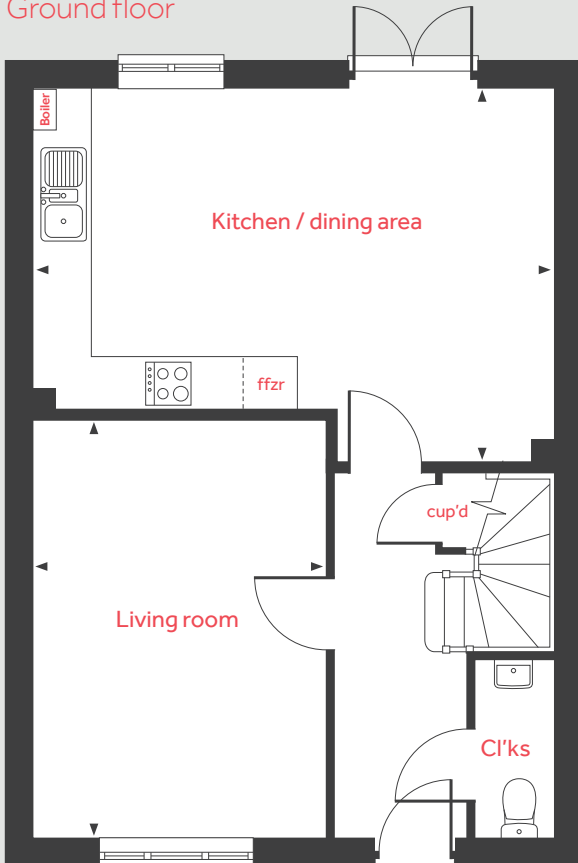
The Mylne

4 bedroom home

First floor



Ground floor



Ground floor

Living room

4.83m x 3.39m 15'10" x 11'1"

Kitchen / dining area

6.04m x 4.37m 19'9" x 14'4"

First floor

Bedroom 1

3.95m x 3.46m 12'11" x 11'4"

Bedroom 2

3.20m x 2.86m 10'6" x 9'4"

Bedroom 3

3.10m x 2.16m 10'2" x 7'1"

Bedroom 4

3.10m x 2.92m 10'2" x 9'7"

lh loft hatch ffzr integrated fridge freezer
cup'd cupboard ◀ ▶ measuring points

Please note, floorplans and dimensions are taken from architectural drawings and are for guidance only. Dimensions stated are within a tolerance of plus or minus 50mm. Overall dimensions are usually stated and there may be projections into these. With our continual improvement policy we constantly review our designs and specification to ensure we deliver the best product to our customers. Computer generated images not to scale. Finishes and materials may vary and landscaping is illustrative only. Kitchen layouts are indicative only and may change. To confirm specific details on our homes please ask your Sales consultant. 1365329/April 2021.

‡Some plots feature a cylinder in the cupboard. Please ask for details.



The Nash 5 bedroom home

Brampton Park

Central Avenue, Brampton, Huntingdon PE28 4QL | 01697 602 064

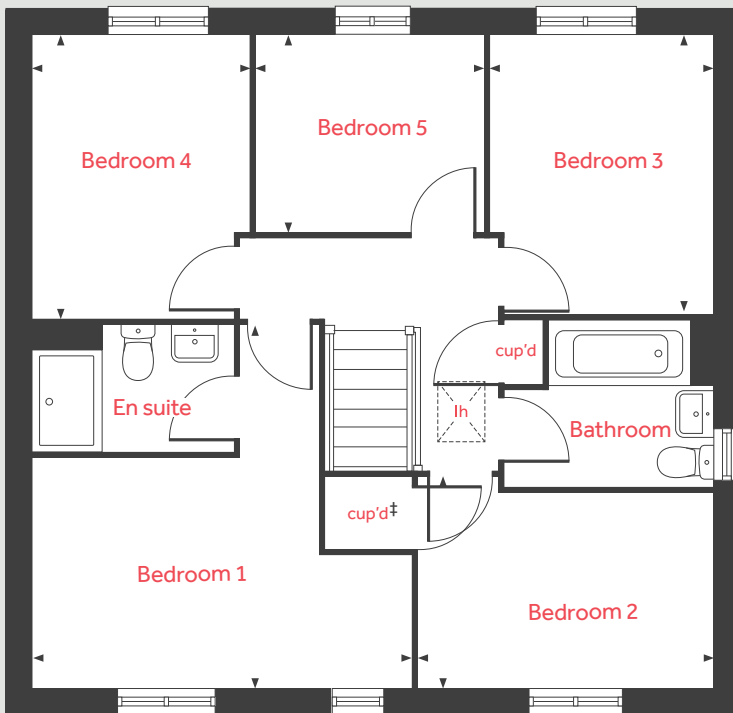
lindenhomes.co.uk/bramptonpark

Linden
HOMES

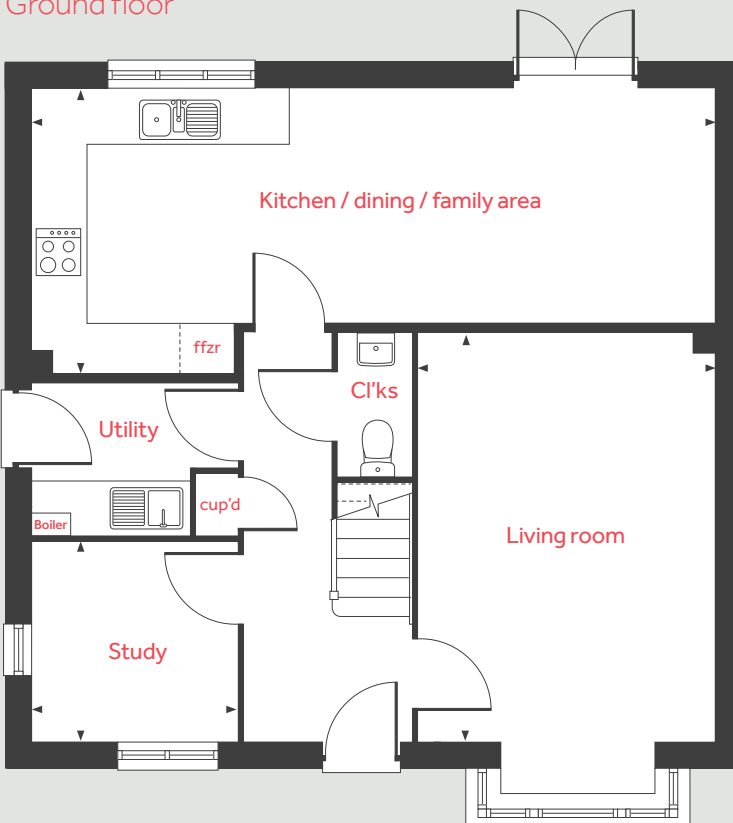
The Nash

5 bedroom home

First floor



Ground floor



Ground floor

Living room

4.83m x 3.39m 15'10" x 11'1"

Kitchen / dining / family area

8.10m x 3.35m 26'7" x 11'0"

Study

2.46m x 2.41m 8'0" x 7'10"

First floor

Bedroom 1

4.41m x 2.71m 14'6" x 8'11"

Bedroom 2

3.50m x 2.34m 11'6" x 7'8"

Bedroom 3

3.28m x 2.66m 10'9" x 8'9"

Bedroom 4

3.34m x 2.61m 10'11" x 8'6"

Bedroom 5

2.73m x 2.35m 8'11" x 7'8"

lh loft hatch ffzr integrated fridge freezer
cup'd cupboard ◀ ▶ measuring points

Please note, floorplans and dimensions are taken from architectural drawings and are for guidance only. Dimensions stated are within a tolerance of plus or minus 50mm. Overall dimensions are usually stated and there may be projections into these. With our continual improvement policy we constantly review our designs and specification to ensure we deliver the best product to our customers. Computer generated images not to scale. Finishes and materials may vary and landscaping is illustrative only. Kitchen layouts are indicative only and may change. To confirm specific details on our homes please ask your Sales consultant. 1365329/April 2021.

‡Some plots feature a cylinder in the cupboard. Please ask for details.



The Pembroke 4 bedroom home

Brampton Park

Central Avenue, Brampton, Huntingdon PE28 4QL | 01697 602 064

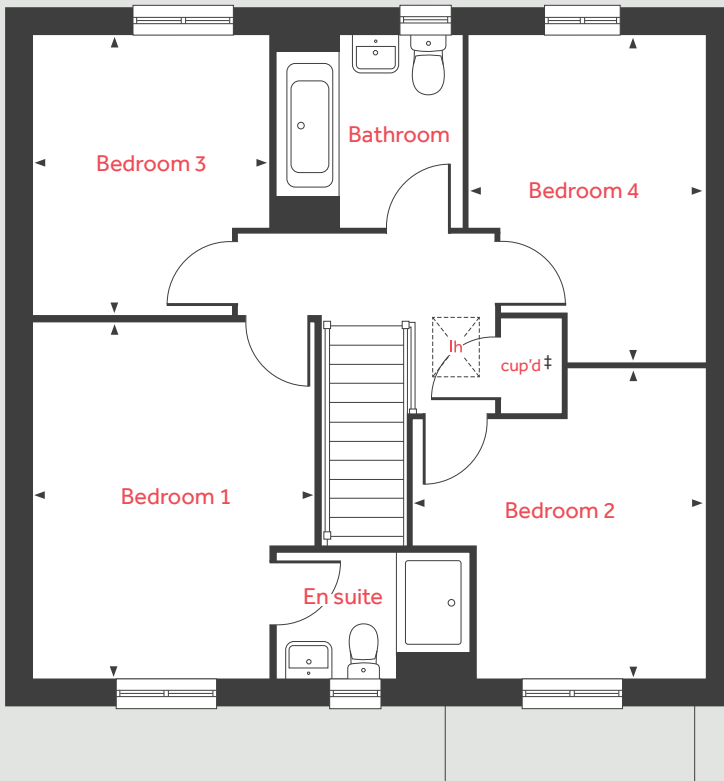
lindenhomes.co.uk/bramptonpark

Linden
HOMES

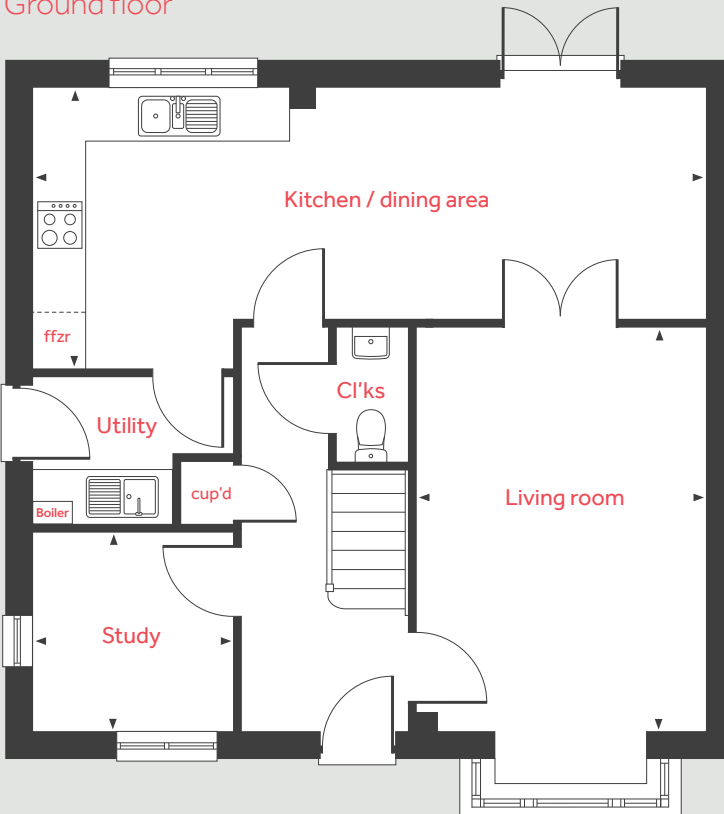
The Pembroke

4 bedroom home

First floor



Ground floor



Ground floor

Living room

4.83m x 3.50m 15'10" x 11'5"

Kitchen / dining area

8.06m x 3.34m 26'5" x 10'11"

Study

2.41m x 2.37m 7'11" x 7'9"

First floor

Bedroom 1

4.29m x 3.40m 14'1" x 11'2"

Bedroom 2

3.72m x 3.50m 12'2" x 11'5"

Bedroom 3

3.35m x 2.88m 11'0" x 9'5"

Bedroom 4

3.92m x 2.82m 12'10" x 9'3"

lh loft hatch ffzr integrated fridge freezer
cup'd cupboard ◀ ▶ measuring points

Please note, floorplans and dimensions are taken from architectural drawings and are for guidance only. Dimensions stated are within a tolerance of plus or minus 50mm. Overall dimensions are usually stated and there may be projections into these. With our continual improvement policy we constantly review our designs and specification to ensure we deliver the best product to our customers. Computer generated images not to scale. Finishes and materials may vary and landscaping is illustrative only. Kitchen layouts are indicative only and may change. To confirm specific details on our homes please ask your Sales consultant. 1365329/April 2021.

Linden HOMES



The Wyatt 3 bedroom home

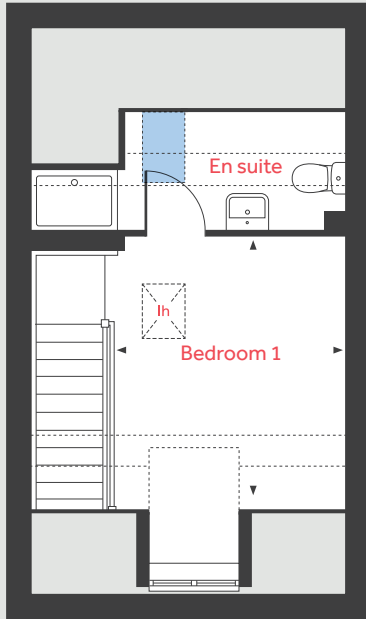
Brampton Park

Central Avenue, Brampton, Huntingdon PE28 4QL | 01697 602 064

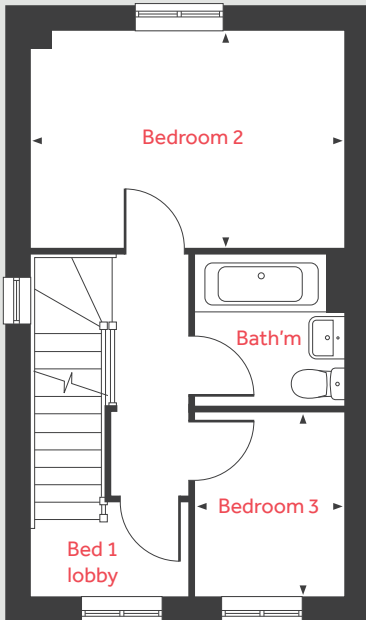
lindenhomes.co.uk/bramptonpark

Linden
HOMES

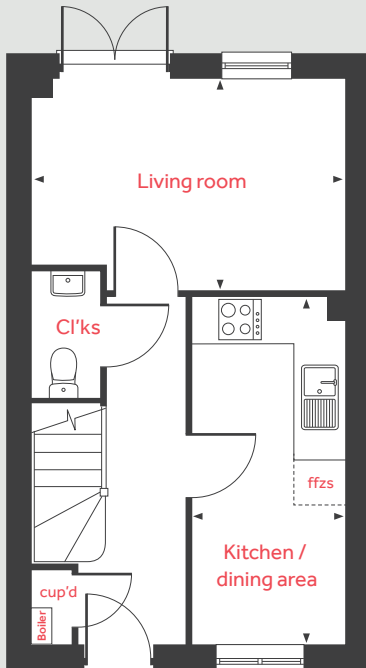
Second floor



First floor



Ground floor



The Wyatt

3 bedroom home

Ground floor

Living room

4.08m x 2.75m 13'4" x 9'0"

Kitchen / dining area

4.56m x 2.01m 15'0" x 6'7"

First floor

Bedroom 2

4.08m x 2.84m 13'4" x 9'4"

Bedroom 3

2.41m x 1.93m 7'11" x 6'4"

Second floor

Bedroom 1

3.42m x 3.02m 11'3" x 9'11"

lh	loft hatch		velux window
cup'd	cupboard		measuring points
ffzs	fridge freezer space		reduced ceiling height

Please note, floorplans and dimensions are taken from architectural drawings and are for guidance only. Dimensions stated are within a tolerance of plus or minus 50mm. Overall dimensions are usually stated and there may be projections into these. With our continual improvement policy we constantly review our designs and specification to ensure we deliver the best product to our customers. Computer generated images not to scale. Finishes and materials may vary and landscaping is illustrative only. Kitchen layouts are indicative only and may change. To confirm specific details on our homes please ask your Sales consultant. 2294721/May 2022.

Linden
HOMES



The Kempthorne V1 4 bedroom home

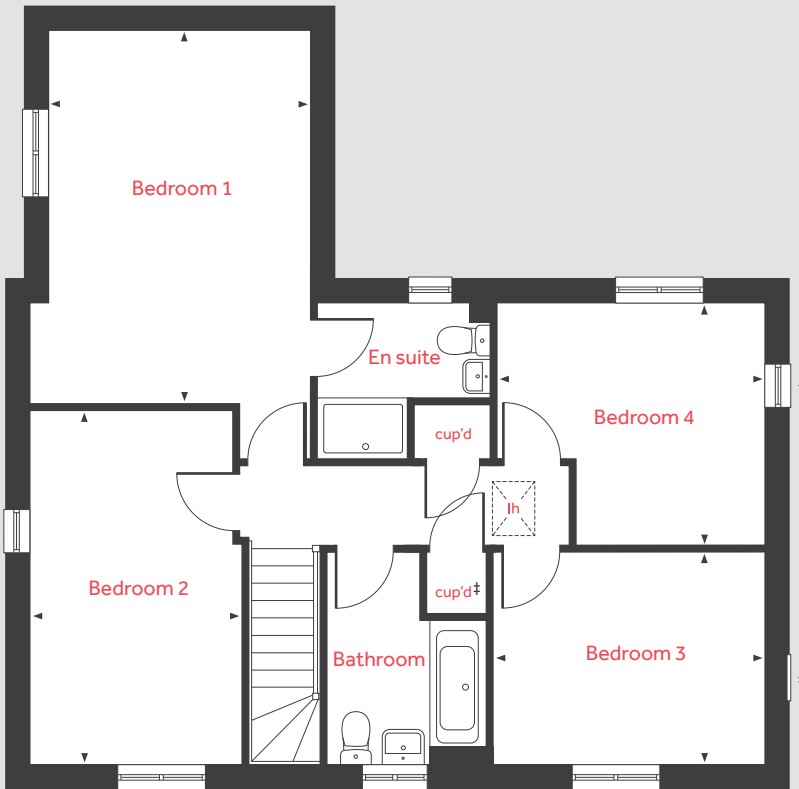
Brampton Park

Central Avenue, Brampton, Huntingdon PE28 4QL | 01697 602 064

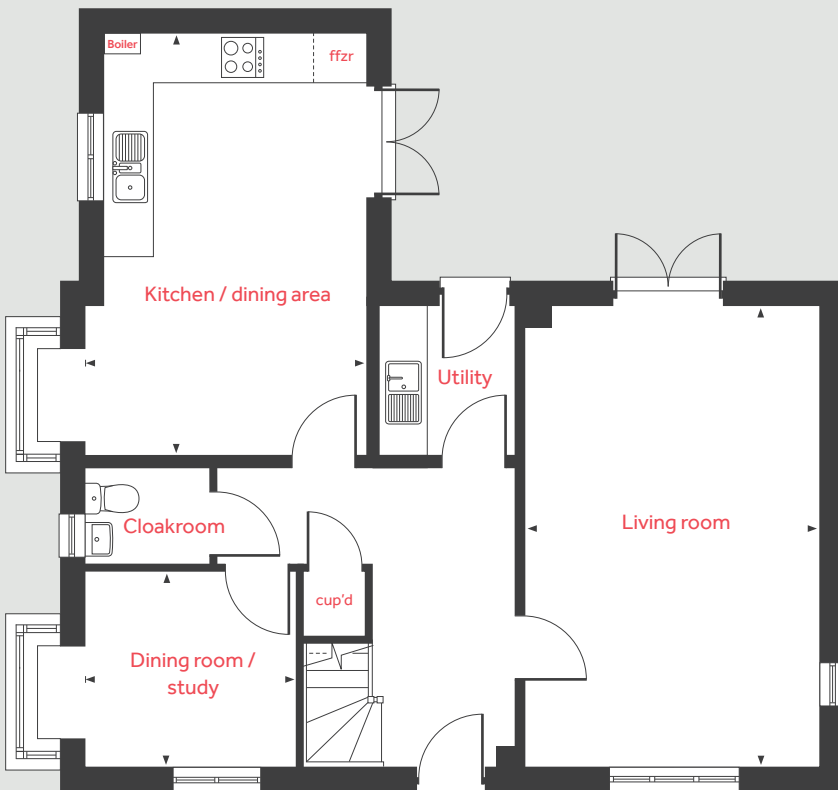
[lindenhomes.co.uk/bramptonpark](https://www.lindenhomes.co.uk/bramptonpark)

Linden
HOMES

First floor



Ground floor



The Kempthorne V1

4 bedroom home

Ground floor

Living room

6.04m x 3.85m 19'9" x 12'7"

Kitchen / dining area

5.57m x 3.67m 18'3" x 12'0"

Dining room / study

2.78m x 2.57m 9'1" x 8'5"

First floor

Bedroom 1

4.87m x 3.45m 15'11" x 11'3"

Bedroom 2

4.69m x 2.78m 15'4" x 9'1"

Bedroom 3

3.52m x 2.80m 11'6" x 9'2"

Bedroom 4

3.50m x 3.16m 11'6" x 10'4"

lh loft hatch ffzr integrated fridge freezer
cup'd cupboard ◀ ▶ measuring points

Please note, floorplans and dimensions are taken from architectural drawings and are for guidance only. Dimensions stated are within a tolerance of plus or minus 50mm. Overall dimensions are usually stated and there may be projections into these. With our continual improvement policy we constantly review our designs and specification to ensure we deliver the best product to our customers. Computer generated images not to scale. Finishes and materials may vary and landscaping is illustrative only. Kitchen layouts are indicative only and may change. To confirm specific details on our homes please ask your Sales consultant. 1365329/April 2021.

*Window to home 185 only. †Window to home 155 only. ‡Blind window to home 155 only. §Some plots feature a cylinder in the cupboard. Please ask for details.