

Around the local neighbourhood

- | | | |
|--------------------------------------|--|-------------------------------------|
| 1 British Rail | 4 Eastfield Medical Centre | 7 St Martins Church, Seamer |
| 2 Burton Riggs Nature Reserve | 5 Scarborough, 4 miles by car | 8 Pickering, 15 miles by car |
| 3 Cambian Scarborough School | 6 Seamer and Irton Primary School | 9 York, 37 miles by car |

Northfield Meadows Seamer

A collection of 2, 3 and 4 bedroom homes near the ever popular seaside resort of Scarborough.

Northfield Meadows is a wonderful collection of traditionally inspired and designed homes, located in the pretty village of Seamer – just a 14-minute drive from the seaside!

This attractive village has a mix of old and new buildings, with quaint old stone houses lining the main street. It's wide choice of public houses and guest houses, along with church, local supermarket and general store with post office – as well as the popular Green Park community park and gardens – make this a self-contained place to live.

Head for the East coast and enjoy the famous resort of Scarborough, with its beautiful limestone cliffs and a breathtaking rocky headland alongside a thriving seafront.

Enjoy the annual Scarborough Fair music festival and the hustle and bustle of the beachfront, to the tranquility of the old town and the fishing harbour. Scarborough's town centre is well served by major High Street names that sit alongside boutique independent shops and a popular indoor market. Also, within easy driving distance are the equally popular seaside resorts of Filey, Bridlington and Whitby.

Out of town, and just a short drive from Scarborough along the A170, is Pickering, a bustling market town on the edge of the North York Moors boasting independent shops and markets, and beautiful historic and natural attractions.

Northfield Meadows Seamer

Development layout



4 bedroom home

- The Mylne
- The Barlow
- The Berkeley
- The Pembroke
- The Lincoln
- The Haxby

3 bedroom home

- The Marston
- The Millington
- The Appleby
- The Sandgate
- The Helmsley
- The Bagby

2 bedroom home

- The Warwick

● Affordable housing

bcp bin collection point **v** visitor space
ss substation



The Harcourt

2 bedroom home

Northfield Meadows

Stoney Hags Road, Seamer YO12 4NF | 01723 829167

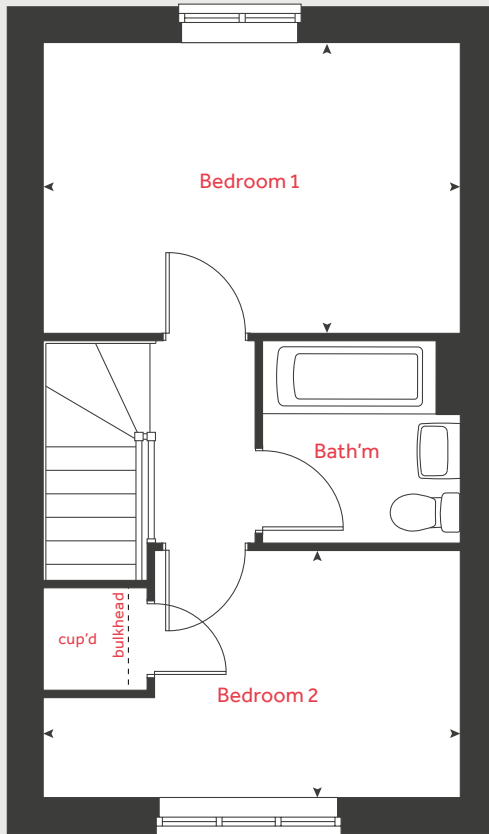
lindenhomes.co.uk

Linden
HOMES

The Harcourt

2 bedroom home

First floor



Ground floor

Kitchen / dining area

4.56m x 2.01m 15' 0" x 6' 7"

Living room

4.08m x 2.74m 13' 5" x 9' 0"

First floor

Bedroom 1

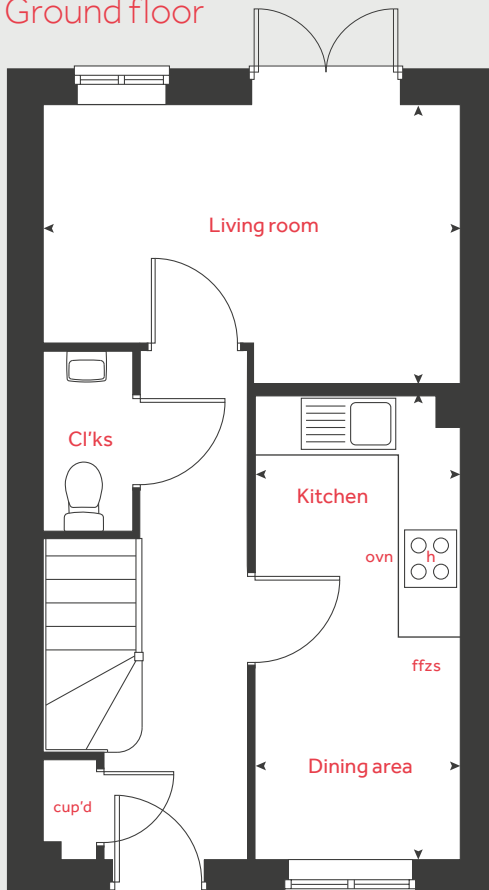
4.08m x 2.83m 13' 5" x 9' 3"

Bedroom 2

4.08m x 2.40m 13' 5" x 7' 11"

h	hob	cup'd	cupboard
ovn	oven	< >	measuring points
ffzs	fridge freezer space		

Ground floor



Please note, floorplans and dimensions are taken from architectural drawings and are for guidance only. Dimensions stated are within a tolerance of plus or minus 50mm. Overall dimensions are usually stated and there may be projections into these. With our continual improvement policy we constantly review our designs and specification to ensure we deliver the best products to our customers. Computer generated images not to scale. Finishes and materials may vary and landscaping is illustrative only. Kitchen layouts are indicative only and may change. To confirm specific details on our homes please see our sales consultant.

Produced by Vistry Group Design Studio.

When you have finished with this leaflet please recycle it.

DS03783 / 10.22

Linden
HOMES



The Eveleigh

3 bedroom home

Northfield Meadows

Stoney Hags Road, Seamer YO12 4NF | 01723 829167

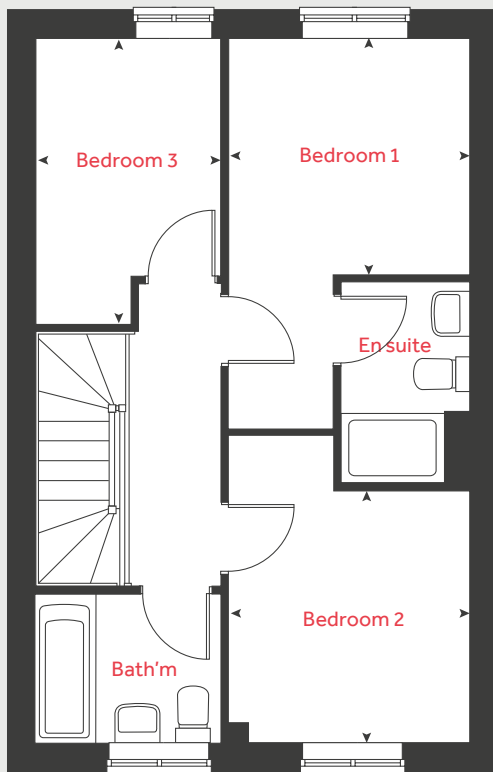
lindenhomes.co.uk

Linden
HOMES

The Eveleigh

3 bedroom home

First floor



Ground floor

Kitchen / dining area
4.82m x 2.80m 15' 9" x 9' 2"

Living room
4.98m x 3.19m 16' 4" x 10' 6"

First floor

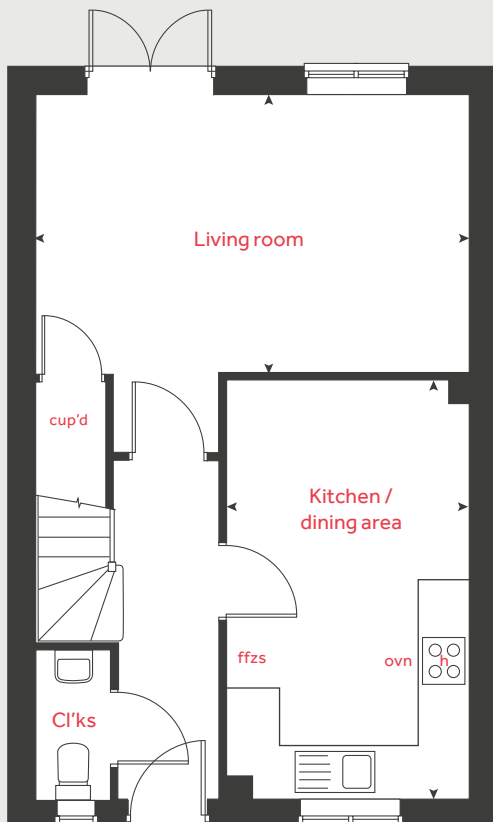
Bedroom 1
2.77m x 2.71m 9' 1" x 8' 11"

Bedroom 2
2.89m x 2.77m 9' 6" x 9' 1"

Bedroom 3
3.19m x 2.12m 10' 6" x 7' 0"

h	hob	cup'd	cupboard
ovn	oven	< >	measuring points
ffzs	fridge freezer space		

Ground floor



Please note, floorplans and dimensions are taken from architectural drawings and are for guidance only. Dimensions stated are within a tolerance of plus or minus 50mm. Overall dimensions are usually stated and there may be projections into these. With our continual improvement policy we constantly review our designs and specification to ensure we deliver the best products to our customers. Computer generated images not to scale. Finishes and materials may vary and landscaping is illustrative only. Kitchen layouts are indicative only and may change. To confirm specific details on our homes please see our sales consultant.

Produced by Vistry Group Design Studio.

When you have finished with this leaflet please recycle it.

DS03783 / 10.22

Linden HOMES



The Mountford

3 bedroom home

Northfield Meadows

Stoney Hags Road, Seamer YO12 4NF | 01723 829167

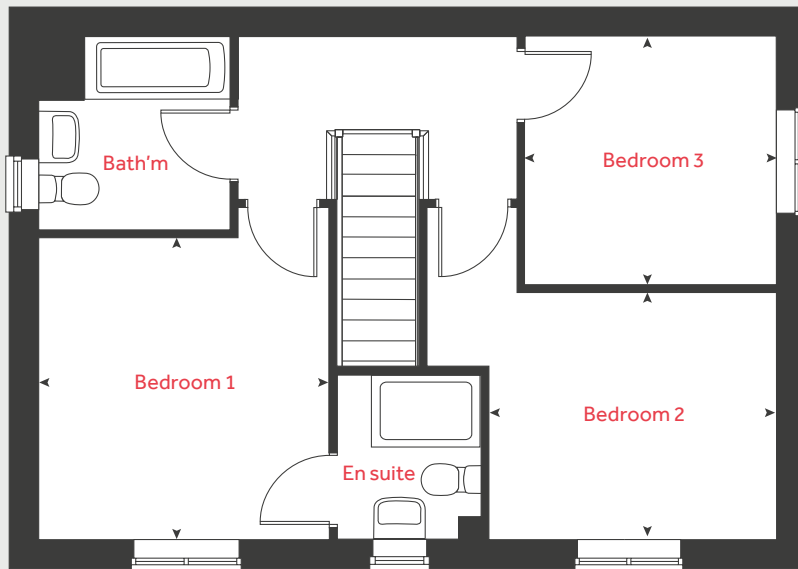
lindenhomes.co.uk

Linden
HOMES

The Mountford

3 bedroom home

First floor



Ground floor

Kitchen / dining area
5.58m x 2.70m 18' 4" x 8' 10"

Living room
5.59m x 3.25m 18' 4" x 10' 8"

First floor

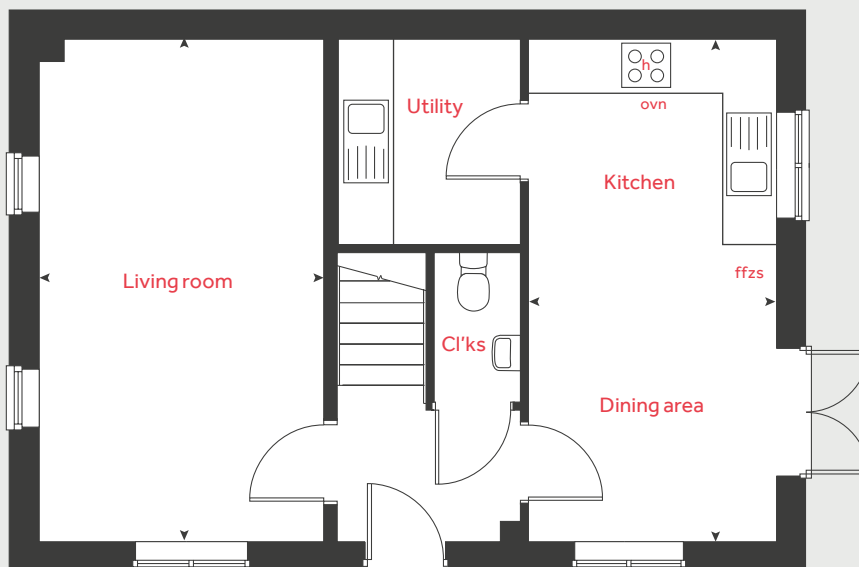
Bedroom 1
3.35m x 3.31m 11' 0" x 10' 11"

Bedroom 2
3.13m x 2.74m 10' 3" x 9' 0"

Bedroom 3
2.76m x 2.76m 9' 1" x 9' 1"

h	hob	cup'd	cupboard
ovn	oven	◀ ▶	measuring points
ffzs	fridge freezer space		

Ground floor



Please note, floorplans and dimensions are taken from architectural drawings and are for guidance only. Dimensions stated are within a tolerance of plus or minus 50mm. Overall dimensions are usually stated and there may be projections into these. With our continual improvement policy we constantly review our designs and specification to ensure we deliver the best products to our customers. Computer generated images not to scale. Finishes and materials may vary and landscaping is illustrative only. Kitchen layouts are indicative only and may change. To confirm specific details on our homes please see our sales consultant.

Produced by Vistry Group Design Studio.

When you have finished with this leaflet please recycle it.

DS04577 / 01.23

Linden
HOMES



The Mylne

4 bedroom home

Northfield Meadows

Stoney Hags Road, Seamer YO12 4NF | 01723 829167

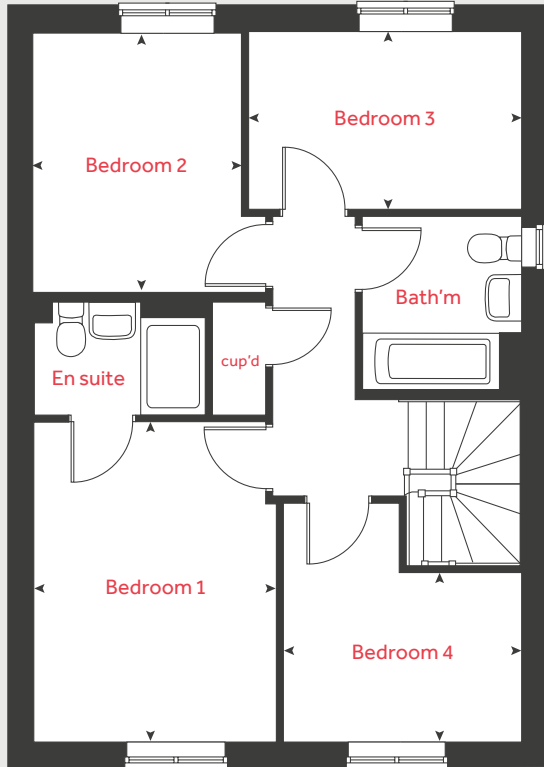
lindenhomes.co.uk

Linden
HOMES

The Mylne

4 bedroom home

First floor



Ground floor

Kitchen / dining / family area

6.08m x 3.80m 19' 9" x 12' 5"

Living room

3.93m x 2.95m 15' 10" x 11' 2"

First floor

Bedroom 1

3.93m x 2.95m 12' 9" x 9' 7"

Bedroom 2

3.20m x 2.51m 10' 5" x 8' 2"

Bedroom 3

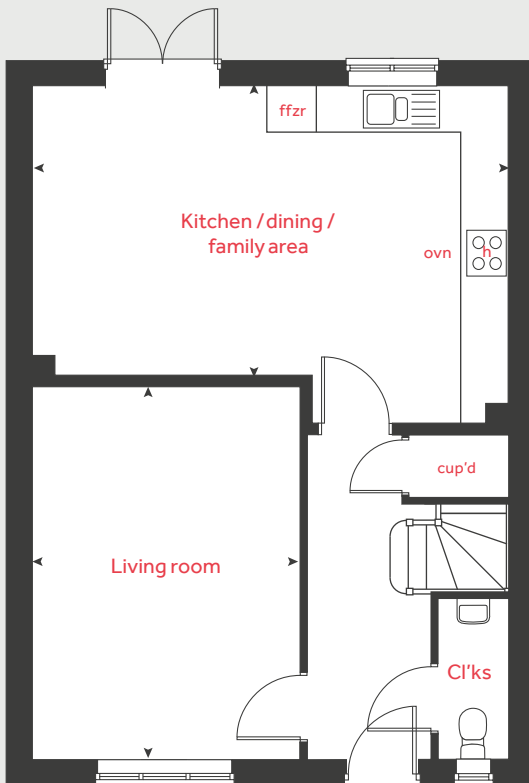
3.43m x 2.18m 11' 3" x 7' 2"

Bedroom 4

3.00m x 2.08m 9' 8" x 6' 8"

h	hob	cup'd	cupboard
ovn	oven	< >	measuring points
ffzr	fridge freezer		

Ground floor



Please note, floorplans and dimensions are taken from architectural drawings and are for guidance only. Dimensions stated are within a tolerance of plus or minus 50mm. Overall dimensions are usually stated and there may be projections into these. With our continual improvement policy we constantly review our designs and specification to ensure we deliver the best products to our customers. Computer generated images not to scale. Finishes and materials may vary and landscaping is illustrative only. Kitchen layouts are indicative only and may change. To confirm specific details on our homes please see our sales consultant.

Produced by Vistry Group Design Studio.

When you have finished with this leaflet please recycle it.

DS04577 / 01.23

Linden
HOMES



The Goodridge

4 bedroom home

Northfield Meadows

Stoney Hags Road, Seamer YO12 4NF | 01723 829167

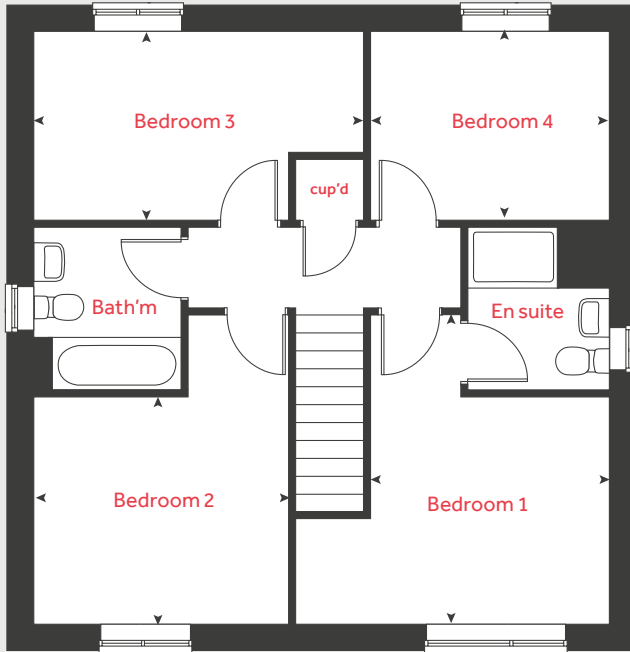
lindenhomes.co.uk

Linden
HOMES

The Goodridge

4 bedroom home

First floor



Ground floor

Kitchen / dining room
5.73m x 2.96m 18' 10" x 9' 9"

Living room
4.73m x 3.42m 15' 6" x 11' 3"

First floor

Bedroom 1
4.09m x 3.19m 13' 5" x 10' 5"

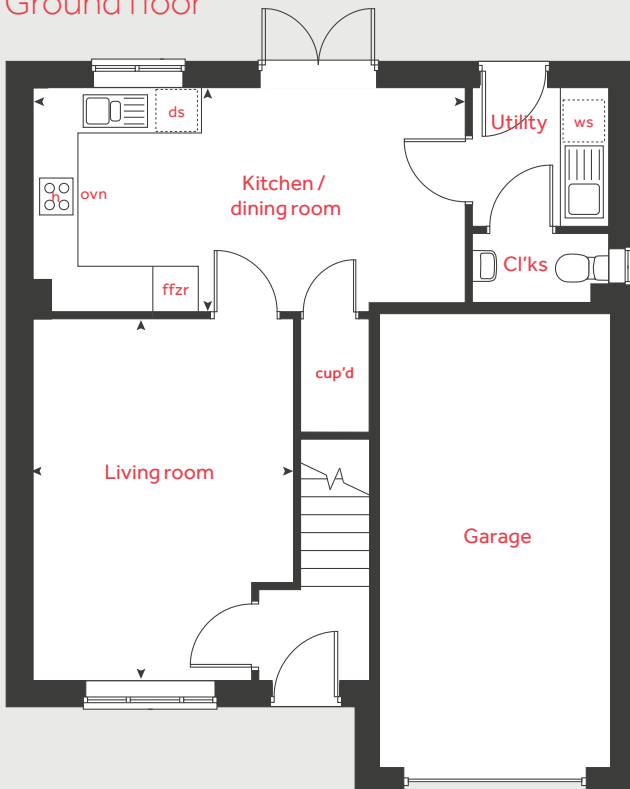
Bedroom 2
3.42m x 2.99m 11' 3" x 9' 10"

Bedroom 3
4.36m x 2.51m 14' 3" x 8' 3"

Bedroom 4
3.17m x 2.51m 10' 5" x 8' 3"

h	hob	ws	washing machine space
ovn	oven	cup'd	cupboard
ffzr	fridge freezer	w	wardrobe
ds	dishwasher space	◀ ▶	measuring points

Ground floor



Please note, floorplans and dimensions are taken from architectural drawings and are for guidance only. Dimensions stated are within a tolerance of plus or minus 50mm. Overall dimensions are usually stated and there may be projections into these. With our continual improvement policy we constantly review our designs and specification to ensure we deliver the best products to our customers. Computer generated images not to scale. Finishes and materials may vary and landscaping is illustrative only. Kitchen layouts are indicative only and may change. To confirm specific details on our homes please see our sales consultant.

Produced by Vistry Group Design Studio.

When you have finished with this leaflet please recycle it.

DS04577 / 01.23

Linden
HOMES



The Grainger

4 bedroom home

Northfield Meadows

Stoney Hags Road, Seamer YO12 4NF | 01723 829167

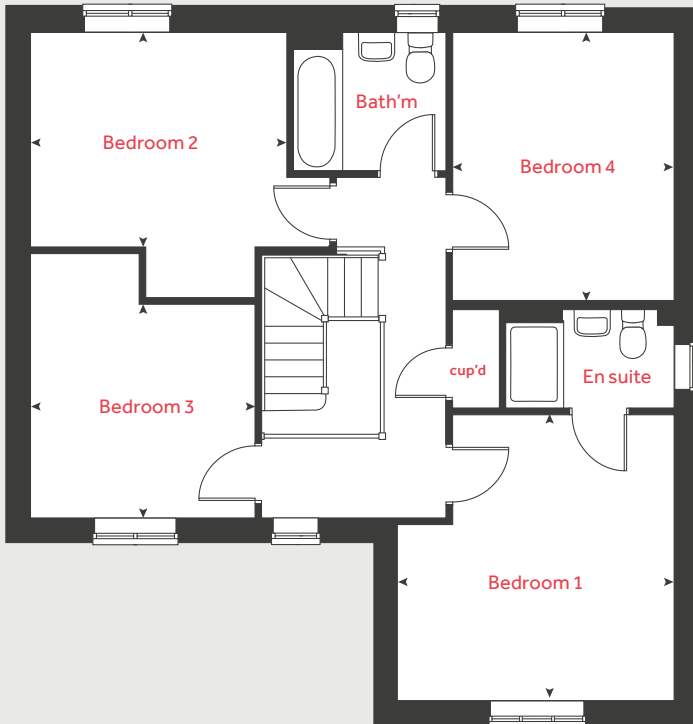
lindenhomes.co.uk

Linden
HOMES

The Grainger

4 bedroom home

First floor



Ground floor

Kitchen / dining room

5.83m x 3.63m 19' 1" x 11' 11"

Living room

4.39m x 3.90m 14' 5" x 12' 9"

First floor

Bedroom 1

4.02m x 3.90m 13' 2" x 12' 9"

Bedroom 2

3.59m x 3.09m 11' 9" x 10' 2"

Bedroom 3

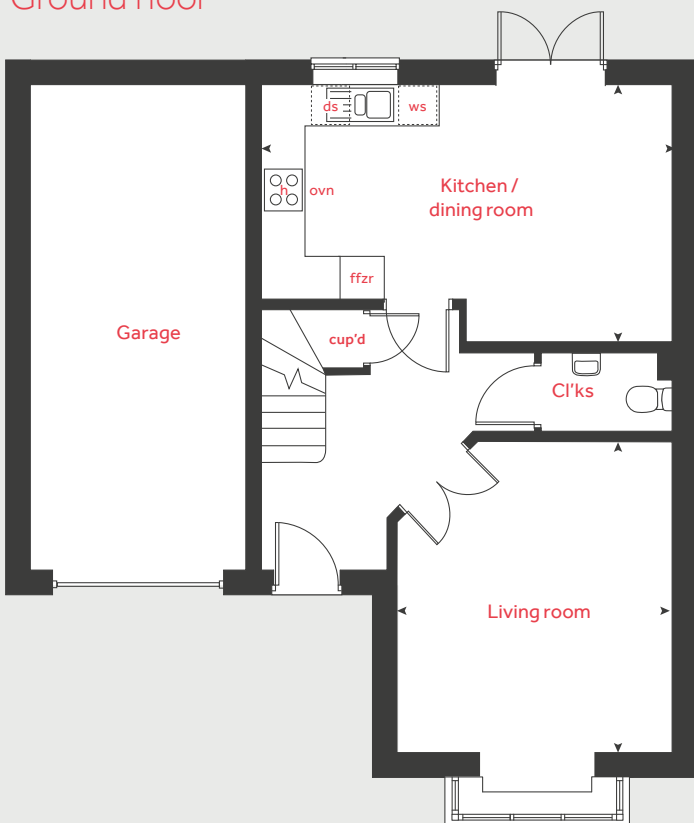
3.18m x 3.04m 10' 5" x 10' 0"

Bedroom 4

3.80m x 3.13m 12' 6" x 10' 3"

h	hob	ws	washing machine space
ovn	oven	cup'd	cupboard
ffzr	fridge freezer	w	cupboard
ds	dishwasher space	< >	measuring points

Ground floor



Please note, floorplans and dimensions are taken from architectural drawings and are for guidance only. Dimensions stated are within a tolerance of plus or minus 50mm. Overall dimensions are usually stated and there may be projections into these. With our continual improvement policy we constantly review our designs and specification to ensure we deliver the best products to our customers. Computer generated images not to scale. Finishes and materials may vary and landscaping is illustrative only. Kitchen layouts are indicative only and may change. To confirm specific details on our homes please see our sales consultant.

Produced by Vistry Group Design Studio.

When you have finished with this leaflet please recycle it.

DS04577 / 01.23

Linden
HOMES



The Pembroke

4 bedroom home

Northfield Meadows

Stoney Hags Road, Seamer YO12 4NF | 01723 829167

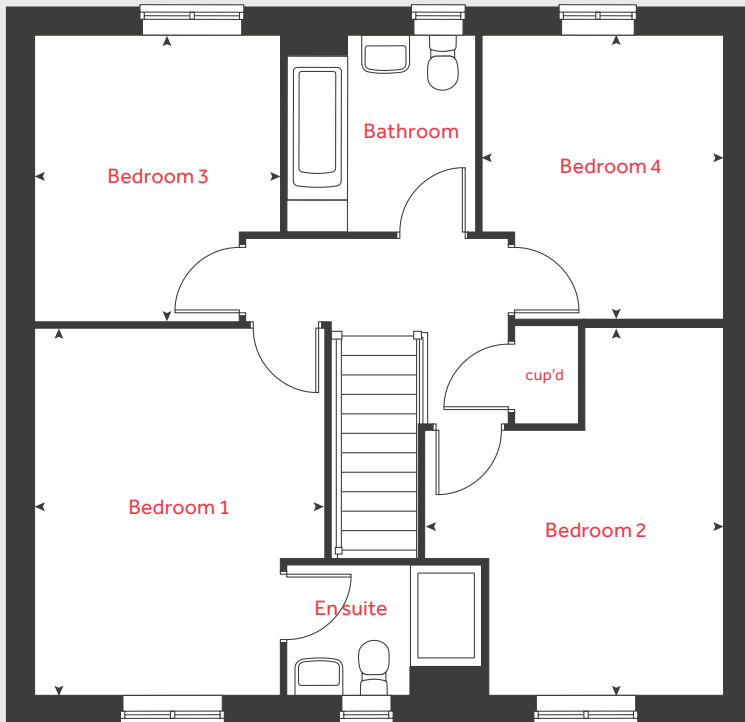
lindenhomes.co.uk

Linden
HOMES

The Pembroke

4 bedroom home

First floor



Ground floor

Kitchen / family / dining area

8.11m x 2.79m 26' 6" x 9' 2"

Living room

4.83m x 3.49m 15' 8" x 11' 5"

Study

2.40m x 2.35m 7' 9" x 7' 7"

First floor

Bedroom 1

4.28m x 3.38m 14' 0" x 11' 1"

Bedroom 2

4.32m x 2.74m 14' 2" x 9' 0"

Bedroom 3

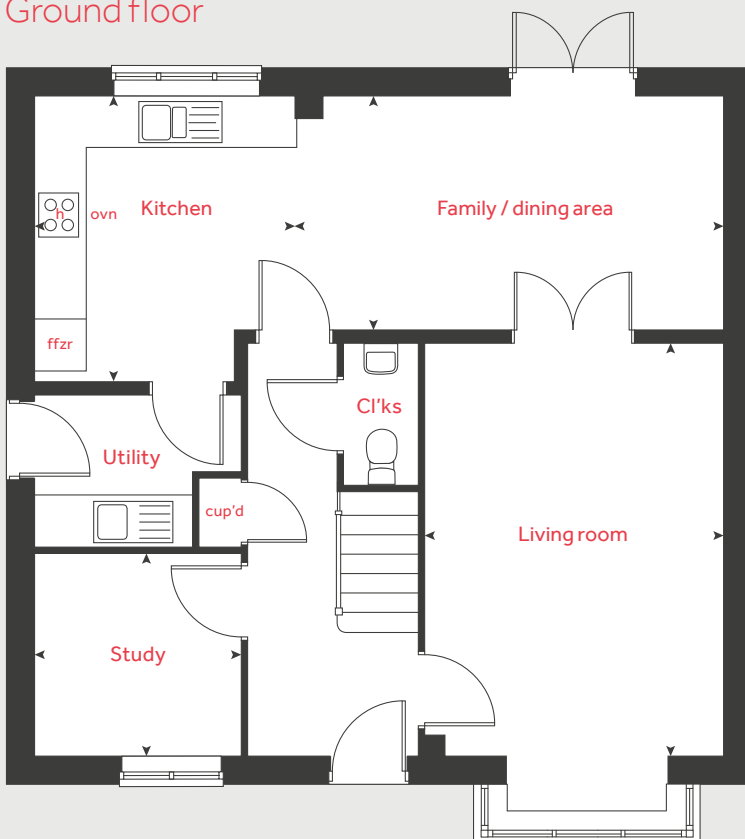
3.36m x 2.87m 11' 0" x 9' 4"

Bedroom 4

2.29m x 2.21m 7' 5" x 7' 3"

h	hob	cup'd	cupboard
ovn	oven	◀ ▶	measuring points
ffzr	fridge freezer		

Ground floor



Please note, floorplans and dimensions are taken from architectural drawings and are for guidance only. Dimensions stated are within a tolerance of plus or minus 50mm. Overall dimensions are usually stated and there may be projections into these. With our continual improvement policy we constantly review our designs and specification to ensure we deliver the best products to our customers. Computer generated images not to scale. Finishes and materials may vary and landscaping is illustrative only. Kitchen layouts are indicative only and may change. To confirm specific details on our homes please see our sales consultant.

Produced by Vistry Group Design Studio.

When you have finished with this leaflet please recycle it.

DS04577 / 12.22

Linden

HOMES