

Bishops Park II

Bishop Auckland



Linden
HOMES



Bishops Park II Bishop Auckland

A collection of 3 & 4 bedroom homes in the bustling market town of Bishop Auckland.

Bishop Auckland, a thriving market town in the Vale of Durham, stands high above the River Wear and enjoys stunning views of the surrounding countryside. It is home to many historical attractions, while offering a vibrant shopping scene.

Auckland Castle tells stories of the town's fascinating past as well as offering highly scenic walks. Shoppers can enjoy the

Bishop Auckland Retail Park and the town's household name stores, while parents will be pleased to find schools rated 'Good' and 'Outstanding' by Ofsted nearby. For travel and commuting, Durham is only an 18 minute drive away, while Newcastle is around 42 minutes by car.

Bishops Park II

Bishop Auckland, Vale of Durham DL14 8RG | 01388 881 557

[lindenhomes.co.uk/bishopsparkii](https://www.lindenhomes.co.uk/bishopsparkii)

Linden
HOMES

Development layout

4 bedroom home

- The Goodridge
- The Mylne

3 bedroom home

- The Eveleigh
- The Maddison
- The Mayfield
- The Mountford

Pre-sold homes

- 3 bedroom homes
- 4 bedroom homes

| | | | |
|----|-----------------------|----|---------------------------------|
| bc | bin collection point | * | private rent |
| ▶ | garage entrance | ** | Shared Ownership (Home Stepper) |
| v | visitor parking space | | |

Not to scale. Trees and landscaping are indicative only and may alter during construction. The trees, shrubs and gardens shown are illustrative only. Finishes and materials may vary from those shown here. Please ask your sales consultant for specific details.





The Eveleigh 3 bedroom home

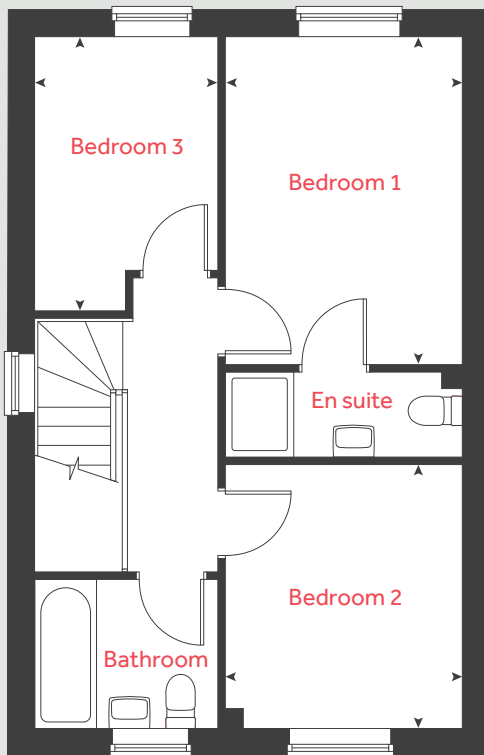
Bishops Park II

Bishop Auckland, Vale of Durham DL14 8RG | 01388 881 557

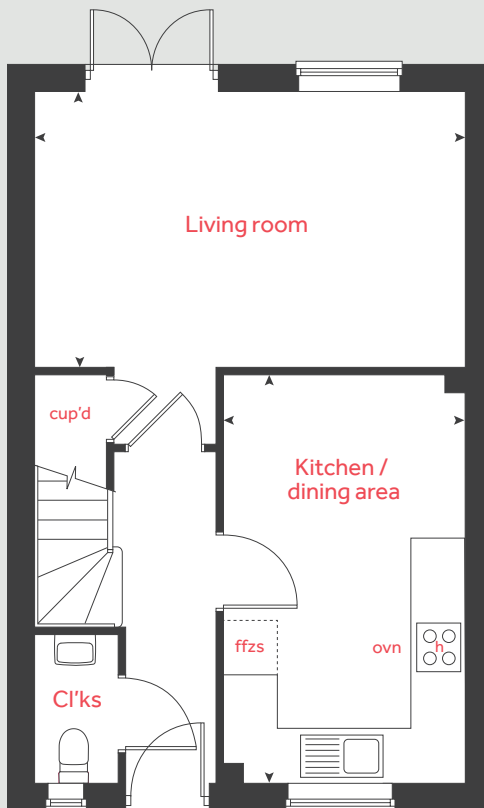
lindenhomes.co.uk/bishopsparkII

Linden
HOMES

First floor



Ground floor



The Eveleigh

3 bedroom home

Ground floor

Living room

5.01m x 3.22m 16'5" x 10'7"

Kitchen / dining area

4.80m x 2.80m 15'9" x 9'2"

First floor

Bedroom 1

3.83m x 2.77m 12'7" x 9'1"

Bedroom 2

3.10m x 2.77m 10'2" x 9'1"

Bedroom 3

3.22m x 2.14m 10'7" x 7'0"

| | | | |
|-------|----------|------|----------------------|
| cup'd | cupboard | ffzs | fridge freezer space |
| ovn | oven | ◀ ▶ | measuring points |
| h | hob | | |

Please note, floorplans and dimensions are taken from architectural drawings and are for guidance only. Dimensions stated are within a tolerance of plus or minus 50mm. Overall dimensions are usually stated and there may be projections into these. With our continual improvement policy we constantly review our designs and specification to ensure we deliver the best product to our customers. Computer generated images not to scale. Finishes and materials may vary and landscaping is illustrative only. Kitchen layouts are indicative only and may change. To confirm specific details on our homes please ask your Sales consultant. 2584603/May 2023.

Linden

HOMES



The Goodridge 4 bedroom home

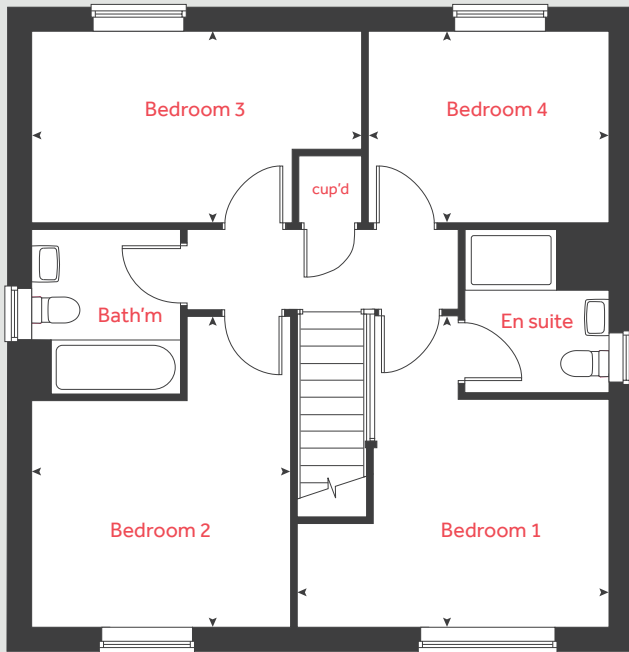
Bishops Park II

Bishop Auckland, Vale of Durham DL14 8RG | 01388 881 557

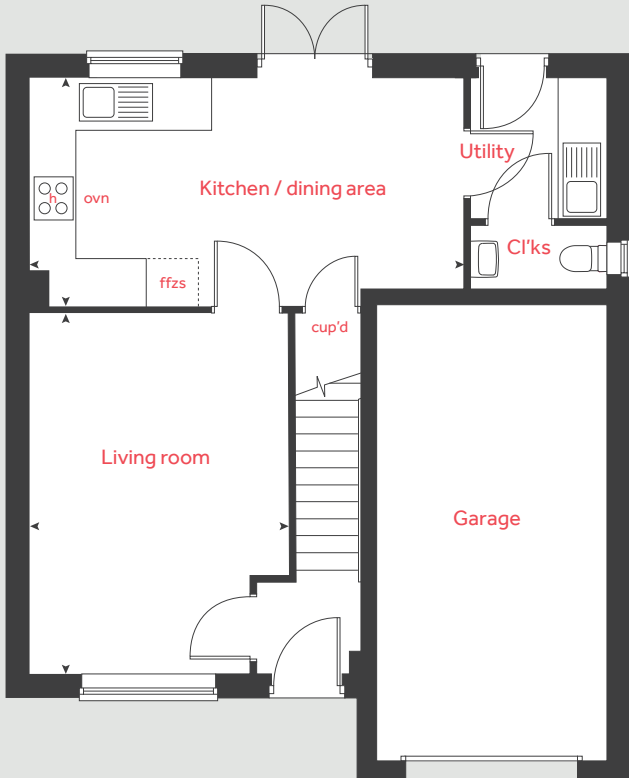
lindenhomes.co.uk/bishopsparkII

Linden
HOMES

First floor



Ground floor



The Goodridge

4 bedroom home

Ground floor

Living room
4.73m x 3.42m 15'6" x 11'3"

Kitchen / dining area
5.73m x 2.96m 18'10" x 9'9"

First floor

Bedroom 1
4.11m x 4.10m 13'6" x 13'5"

Bedroom 2
4.10m x 3.42m 13'5" x 11'3"

Bedroom 3
4.35m x 2.51m 14'3" x 8'3"

Bedroom 4
3.17m x 2.51m 10'5" x 8'3"

| | | | |
|-------|----------|------|----------------------|
| cup'd | cupboard | ffzs | fridge freezer space |
| ovn | oven | ◀ ▶ | measuring points |
| h | hob | | |

Please note, floorplans and dimensions are taken from architectural drawings and are for guidance only. Dimensions stated are within a tolerance of plus or minus 50mm. Overall dimensions are usually stated and there may be projections into these. With our continual improvement policy we constantly review our designs and specification to ensure we deliver the best product to our customers. Computer generated images not to scale. Finishes and materials may vary and landscaping is illustrative only. Kitchen layouts are indicative only and may change. To confirm specific details on our homes please ask your Sales consultant. 2584603/May 2023.



The Mylne 4 bedroom home

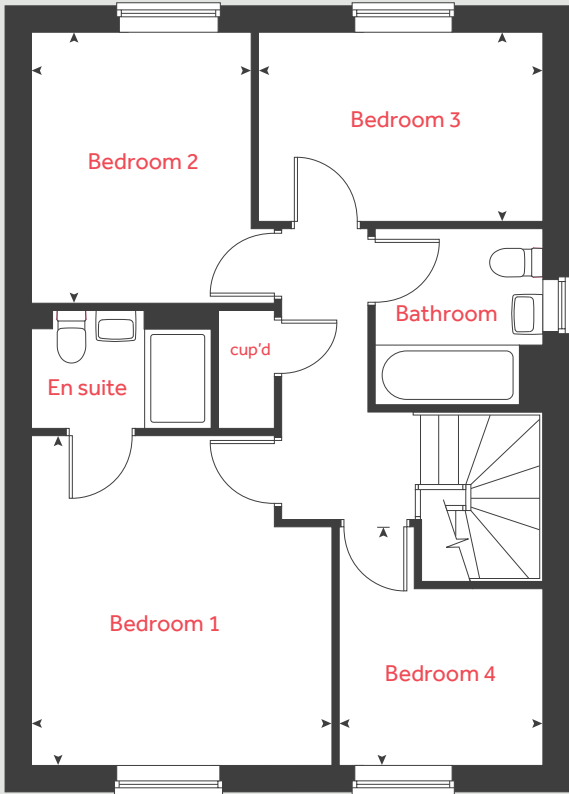
Bishops Park II

Bishop Auckland, Vale of Durham DL14 8RG | 01388 881 557

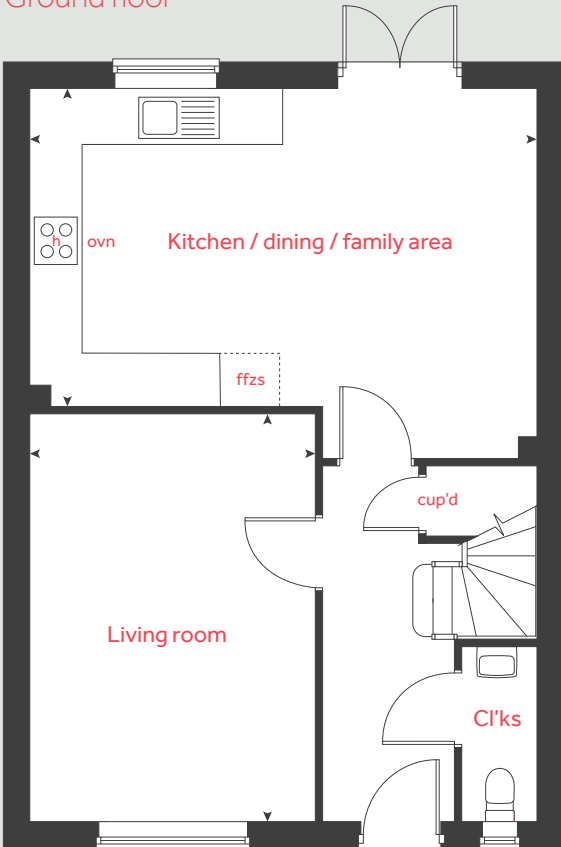
lindenhomes.co.uk/bishopsparkII

Linden
HOMES

First floor



Ground floor



The Mylne

4 bedroom home

Ground floor

Living room
4.86m x 3.42m 15'11" x 11'3"

Kitchen / dining / family area
6.08m x 4.40m 19'11" x 14'5"

First floor

Bedroom 1
3.96m x 3.57m 13'0" x 11'9"

Bedroom 2
3.25m x 2.60m 10'8" x 8'6"

Bedroom 3
3.40m x 2.25m 11'6" x 7'5"

Bedroom 4
2.85m x 2.42m 9'4" x 7'11"

| | | | |
|-------|----------|------|----------------------|
| cup'd | cupboard | ffzs | fridge freezer space |
| ovn | oven | ◀ ▶ | measuring points |
| h | hob | | |

Please note, floorplans and dimensions are taken from architectural drawings and are for guidance only. Dimensions stated are within a tolerance of plus or minus 50mm. Overall dimensions are usually stated and there may be projections into these. With our continual improvement policy we constantly review our designs and specification to ensure we deliver the best product to our customers. Computer generated images not to scale. Finishes and materials may vary and landscaping is illustrative only. Kitchen layouts are indicative only and may change. To confirm specific details on our homes please ask your Sales consultant. 2584603/May 2023.



The Maddison 3 bedroom home

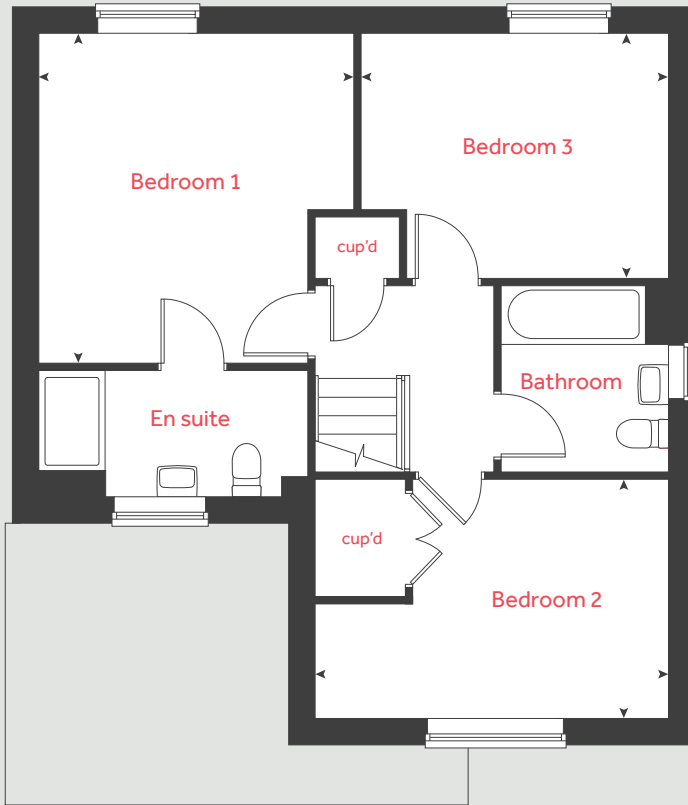
Bishops Park II

Bishop Auckland, Vale of Durham DL14 8RG | 01388 881 557

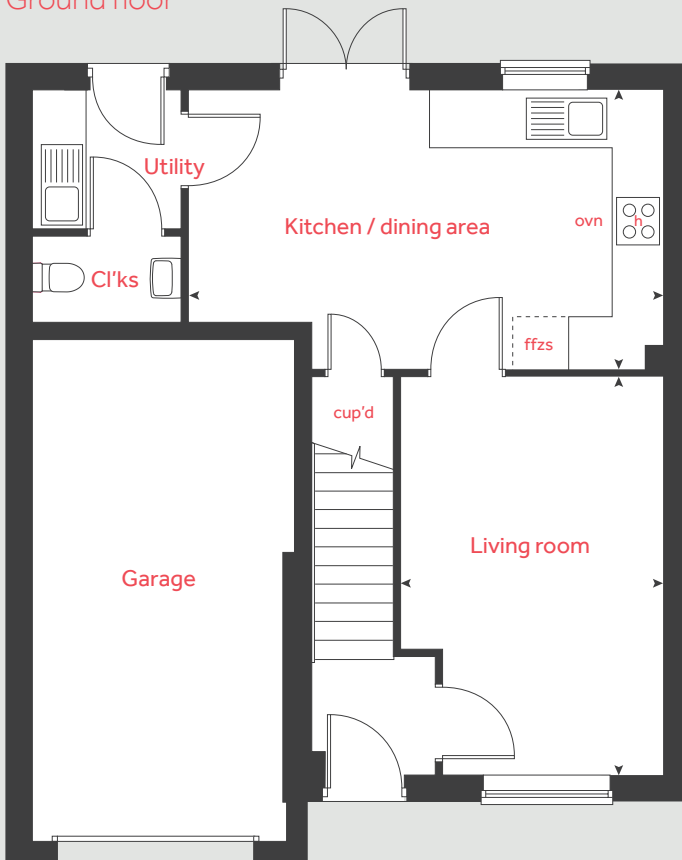
lindenhomes.co.uk/bishopsparkii

Linden
HOMES

First floor



Ground floor



The Maddison

3 bedroom home

Ground floor

Living room

4.80m x 3.15m 15'9" x 10'4"

Kitchen / dining area

5.67m x 3.33m 18'7" x 10'11"

First floor

Bedroom 1

3.95m x 3.80m 13'0" x 12'6"

Bedroom 2

4.22m x 2.88m 13'10" x 9'5"

Bedroom 3

3.66m x 2.93m 12'0" x 9'7"

| | | | |
|-------|----------|------|----------------------|
| cup'd | cupboard | ffzs | fridge freezer space |
| ovn | oven | ◀ ▶ | measuring points |
| h | hob | | |

Please note, floorplans and dimensions are taken from architectural drawings and are for guidance only. Dimensions stated are within a tolerance of plus or minus 50mm. Overall dimensions are usually stated and there may be projections into these. With our continual improvement policy we constantly review our designs and specification to ensure we deliver the best product to our customers. Computer generated images not to scale. Finishes and materials may vary and landscaping is illustrative only. Kitchen layouts are indicative only and may change. To confirm specific details on our homes please ask your Sales consultant. 2584603/May 2023.

Linden

HOMES



The Mayfield 3 bedroom home

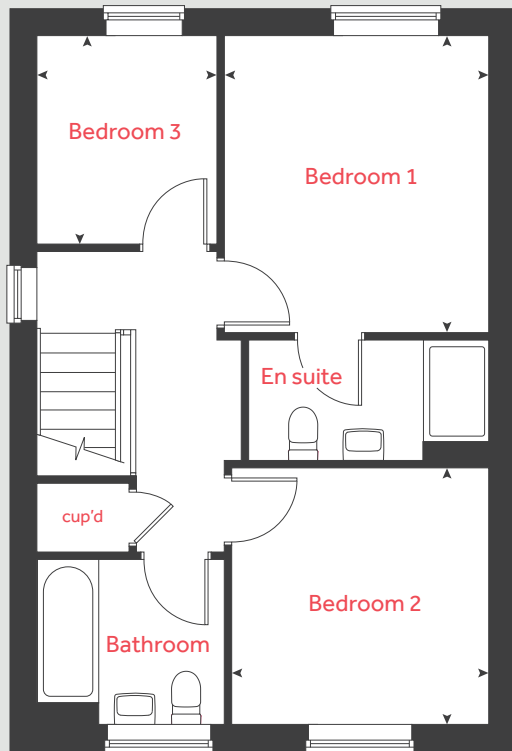
Bishops Park II

Bishop Auckland, Vale of Durham DL14 8RG | 01388 881 557

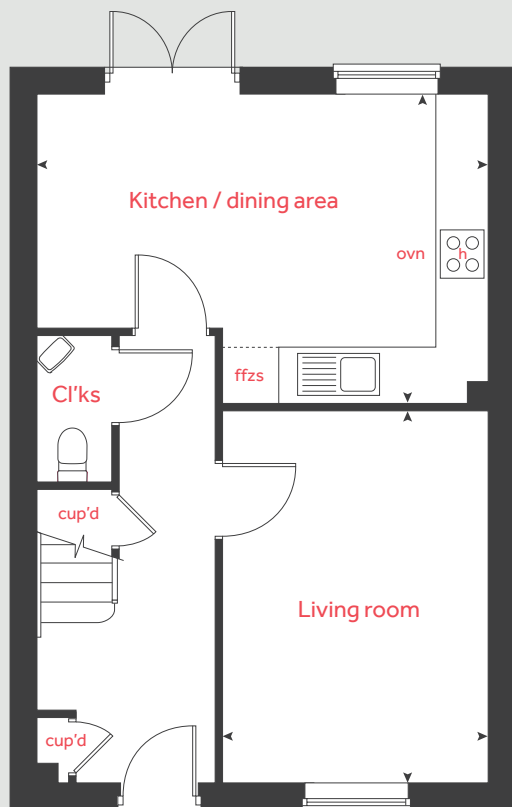
lindenhomes.co.uk/bishopsparkII

Linden
HOMES

First floor



Ground floor



The Mayfield

3 bedroom home

Ground floor

Living room

4.35m x 3.10m 14'3" x 10'2"

Kitchen / dining area

5.30m x 3.61m 17'5" x 11'10"

First floor

Bedroom 1

3.48m x 3.13m 11'5" x 10'3"

Bedroom 2

3.03m x 3.03m 9'11" x 9'11"

Bedroom 3

2.45m x 2.08m 8'0" x 6'10"

| | | | |
|-------|----------|------|----------------------|
| cup'd | cupboard | ffzs | fridge freezer space |
| ovn | oven | ◀ ▶ | measuring points |
| h | hob | | |

Please note, floorplans and dimensions are taken from architectural drawings and are for guidance only. Dimensions stated are within a tolerance of plus or minus 50mm. Overall dimensions are usually stated and there may be projections into these. With our continual improvement policy we constantly review our designs and specification to ensure we deliver the best product to our customers. Computer generated images not to scale. Finishes and materials may vary and landscaping is illustrative only. Kitchen layouts are indicative only and may change. To confirm specific details on our homes please ask your Sales consultant. 2584603/May 2023.

Linden

HOMES



The Mountford 3 bedroom home

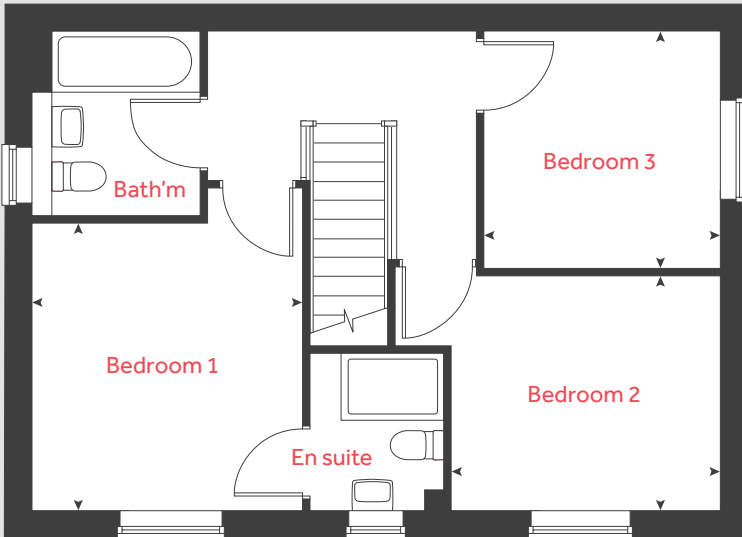
Bishops Park II

Bishop Auckland, Vale of Durham DL14 8RG | 01388 881 557

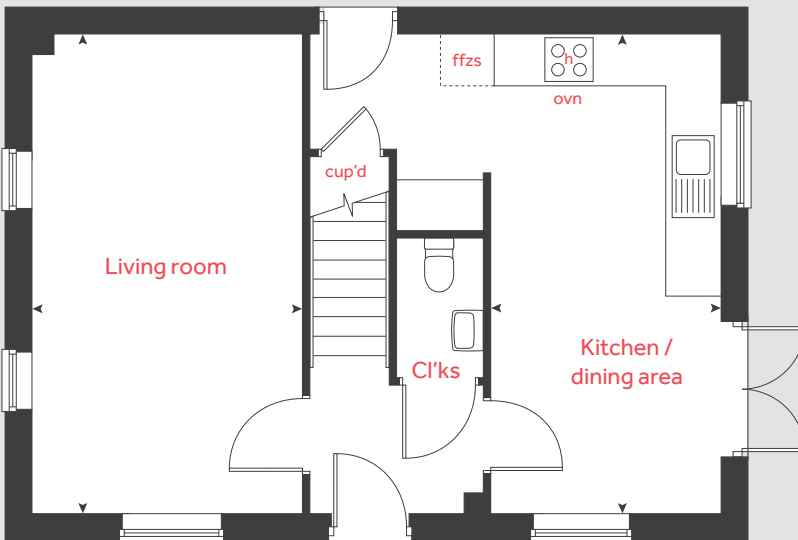
lindenhomes.co.uk/bishopsparkII

Linden
HOMES

First floor



Ground floor



The Mountford

3 bedroom home

Ground floor

Living room

5.63m x 3.14m 18'6" x 10'4"

Kitchen / dining area

5.63m x 2.69m 18'6" x 8'10"

First floor

Bedroom 1

3.37m x 3.20m 11'1" x 10'6"

Bedroom 2

3.16m x 2.76m 10'4" x 9'1"

Bedroom 3

2.79m x 2.79m 9'2" x 9'2"

| | | | |
|-------|----------|------|----------------------|
| cup'd | cupboard | ffzs | fridge freezer space |
| ovn | oven | ◀ ▶ | measuring points |
| h | hob | | |

Please note, floorplans and dimensions are taken from architectural drawings and are for guidance only. Dimensions stated are within a tolerance of plus or minus 50mm. Overall dimensions are usually stated and there may be projections into these. With our continual improvement policy we constantly review our designs and specification to ensure we deliver the best product to our customers. Computer generated images not to scale. Finishes and materials may vary and landscaping is illustrative only. Kitchen layouts are indicative only and may change. To confirm specific details on our homes please ask your Sales consultant. 2584603/May 2023.



Specification

Private Sale Homes

Bishops Park II

Bishop Auckland, Vale of Durham DL14 8RG | 01388 881 557

lindenhomes.co.uk/bishopsparkII

Linden
HOMES

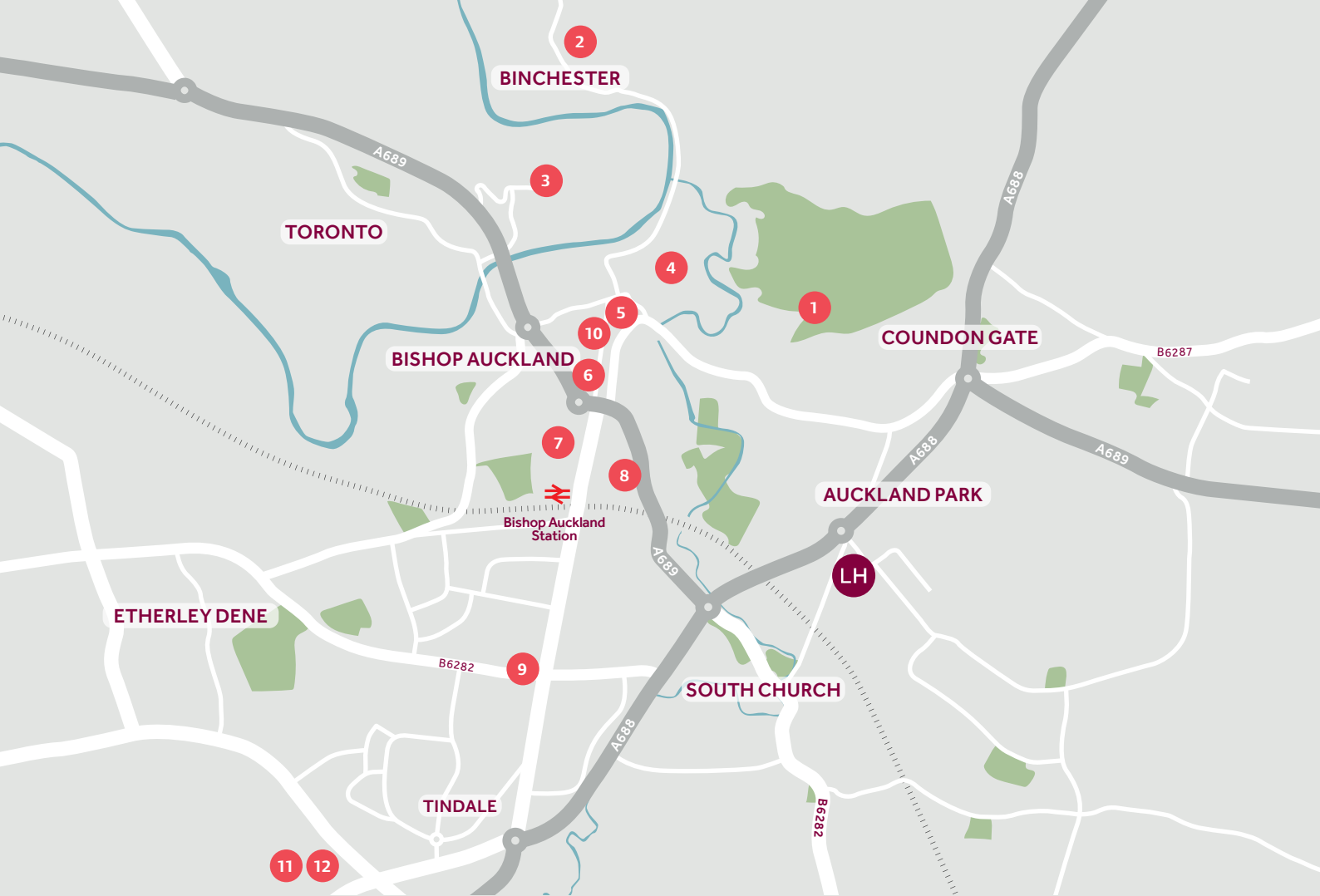
Specification

Each home will be independently surveyed during construction by the NHBC, who will issue their 10 year warranty certificate on completion of the home.

| | 3 bedroom homes | 4 bedroom homes |
|--|-----------------|-----------------|
| Kitchen | | |
| Laminated worktop & matching upstands | ■ | ■ |
| Soft closing doors and drawers | ■ | ■ |
| Stainless steel 1 bowl sink | ■ | ■ |
| Chrome monobloc mixer tap | ■ | ■ |
| Stainless steel splashback to hob | ■ | ■ |
| Under counter single oven | ■ | ■ |
| 4 burner gas hob | ■ | ■ |
| Integrated extractor | ■ | |
| Stainless steel chimney hood | | ■ |
| Bathroom, En suite and Cloakroom | | |
| White sanitaryware and chrome fittings | ■ | ■ |
| Shower mixer tap to bathroom | ■ | ■ |
| Soft close seats to all WCs | ■ | ■ |
| Choice of standard Porcelanosa wall tiling (splashback, half-height over bath, and full-height to shower cubicle)* | ■ | ■ |
| Full height tiling to en suite shower cubicle | ■ | ■ |
| Splashback tiling to cloakroom basin only | ■ | ■ |
| Electrical | | |
| White switch plates and sockets | ■ | ■ |
| TV points to the lounge, kitchen and bedroom 1 | ■ | ■ |
| 2 x BT point to the ground floor | ■ | ■ |
| White pendant fittings throughout (except bathroom, en suite and cloakroom) | ■ | ■ |
| Mains wired smoke alarm & CO detector | ■ | ■ |
| Interior | | |
| Wall and ceilings in white matt emulsion | ■ | ■ |
| Internal woodwork in white gloss/satinwood | ■ | ■ |
| Polished chrome door handles | ■ | ■ |
| Premdor premium ladder doors | ■ | ■ |
| External | | |
| Stainless steel up/down light to front door | ■ | ■ |
| External doors with multipoint locking system | ■ | ■ |
| Turf to front gardens | ■ | ■ |

*Subject to stage of construction

The specifications of all our homes is correct at the date of going to print but may be subject to change as necessary and without notice. Please ask your Sales Consultant for more information. 4003093/January 2024.



Around the local neighbourhood

- | | | |
|--|-------------------------------|--|
| 1 Bishop Auckland Golf Club | 5 Mining Art Gallery | 9 Woodhouse Close Leisure Complex |
| 2 (Vinovia) – Binchester Roman Fort | 6 Stan Laurel Statue | 10 Newgate Shopping Centre |
| 3 Eleven Arches Kynren | 7 Morrisons Superstore | 11 Tesco Extra |
| 4 Auckland Castle | 8 Asda Superstore | 12 Bishop Auckland Retail Park |

Distances shown are by road (Source: Google). Fastest journey times are shown (Source: National Rail Enquiries). 4263958/March 2024.

lindenhomes.co.uk/bishopsparkll

Linden
HOMES