

Mill Brook Green

Axminster



Linden
HOMES

Welcome to Mill Brook Green

This attractive new development is in a great location on the edge of the charming Devon market town of Axminster and just 6 miles from the beautiful Jurassic coast.

The charming town centre with its old-fashioned shop fronts offers a range of independent shops, pubs, restaurants and cafes including the popular River Cottage Canteen and Deli, run by celebrity chef Hugh Fearnley-Whittingstall.

Tesco and Co-op stores are both located in the town and each week a delightful Country Market takes place in the town centre offering an array of local produce, gifts and more. You really can find everything you need in this gem of a Devon town!

Axminster has a community hospital, medical practice and dental practice all a short walk or drive from Mill Brook Green. Nearby, community sports facilities, a supermarket and train station can be found also.

This location really does offer everything, whether you know the area well or are making the move from further afield, you are sure to settle in quickly, as everything is on your doorstep!

From Mill Brook Green, there are a number of scenic walking routes and the world-famous Jurassic Coast is only 6 miles away meaning not only can you enjoy the beautiful surrounding countryside, you can soak up the truly spectacular coastal views as well.

Mill Brook Green can be found just off the A358 that leads south to Axmouth and the coastal resort of Seaton and to the A35, the major trunk road serving the area. The A35 links the town to the M5 and Exeter to the west and to Dorset and its county town of Dorchester in the east.

Axminster railway station runs services to Exeter and on to London's Waterloo, meaning you can make the escape to the country but with easy access to the city when you need it for work or to visit family.

Axminster offers bus routes to Taunton, Exeter and to Lyme Regis for a trip to the beach! Exeter International Airport is 24 miles away.

Nearby Honiton, 11 miles away, is another popular Devon market town providing further variety with antiques, crafts and food shops. For city-lovers Exeter is just less than 30 miles away with its Princesshay and Guildhall shopping centres both offering excellent ranges of retail outlets. One-off boutiques and specialist shops can be found in the Castle and West Quarter.

So, if you're looking for a new home in a location that has it all, your search ends here!

Mill Brook Green Axminster


4 bedroom home

- Sage Home 
- The Roman
- The Buckland
- The Mynster
- The Pembroke
- The Mylne

3 bedroom home

- Sage Home 
- The Eveleigh
- The Emmett
- The Mountford
- The Beckett

2 bedroom home

- Sage Home 
- The Ashbee
- The Harcourt

1 bedroom apartment

- The Weycroft



bcp bin collection point

This plan has been produced for home identification purposes only and is not to scale. The development layout, landscaping and tenure of all dwellings may be subject to change throughout the course of the development. Finishes and materials may vary from those shown on the plan. Please check the details of your chosen plot and housetype with the sales consultant. Development layout plan correct at time of production.





Around the local neighbourhood

- | | | |
|--|--|--|
| <p>1 Axminster Hospital
01297 630400</p> | <p>2 Axminster Community
Primary School
01297 33005</p> | <p>3 Tesco Superstore
0345 677 9019</p> |
| <p>4 Axminster Guildhall
01297 33333</p> | <p>5 Axminster Train Station
0345 6000 650</p> | <p>6 Axminster Town
Football Club
07795 217160</p> |
| <p>7 Axe Valley Wildlife Park
01297 34472</p> | <p>8 Axminster Post Office
01297 631190</p> | <p>9 Coombefield
Veterinary Hospital
01297 630500</p> |

Vistry Homes Limited trading as Linden Homes.
Registered Office: 11 Tower View, Kings Hill, West Malling, Kent, ME19 4UY.
Registration Number: 397634. Registered in England & Wales.

Produced by the Vistry Group Design Studio. GD56899 / 10.20

lindenhomes.co.uk

Linden
HOMES



The Ashbee

2 bedroom home

Mill Brook Green

Axminster EX13 5HW | 01297 740996

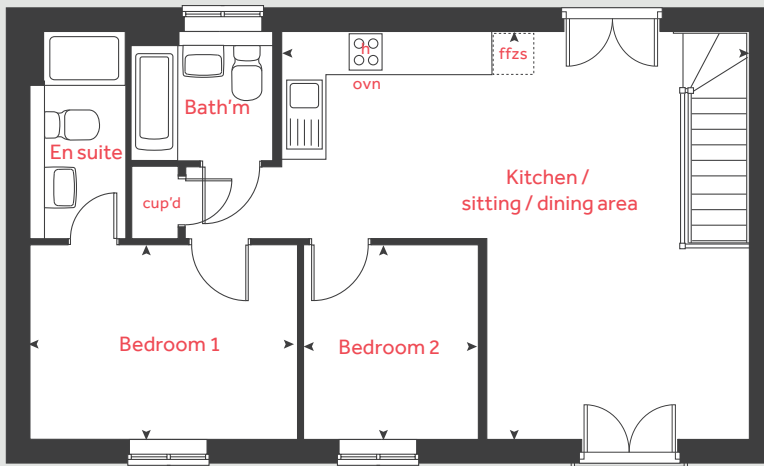
[lindenhomes.co.uk](https://www.lindenhomes.co.uk)

Linden
HOMES

The Ashbee

2 bedroom home

First floor



First floor

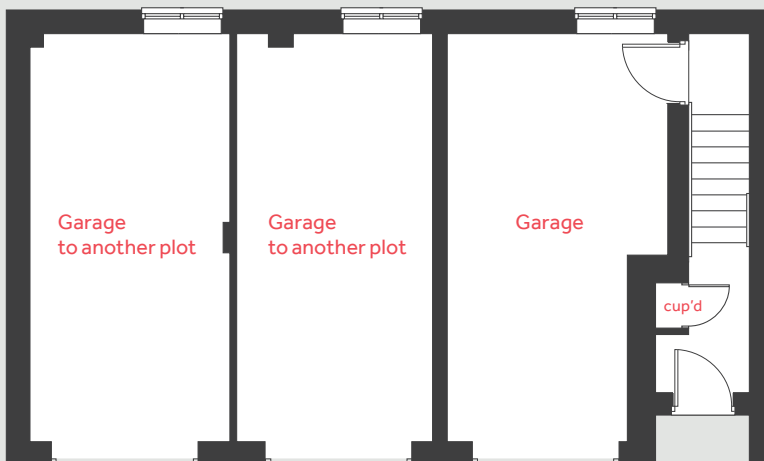
Kitchen / sitting / dining area
6.93m x 6.04m 22' 8" x 19' 9"

Bedroom 1
3.97m x 2.90m 13' 1" x 9' 6"

Bedroom 2
2.90m x 2.58m 9' 6" x 8' 6"

h	hob	cup'd	cupboard
ovn	oven	◀ ▶	measuring points
ffzs	fridge freezer space		

Ground floor



Please note, floorplans and dimensions are taken from architectural drawings and are for guidance only. Dimensions stated are within a tolerance of plus or minus 50mm. Overall dimensions are usually stated and there may be projections into these. With our continual improvement policy we constantly review our designs and specification to ensure we deliver the best products to our customers. Computer generated images not to scale. Finishes and materials may vary and landscaping is illustrative only. Kitchen layouts are indicative only and may change. To confirm specific details on our homes please see our sales consultant.

Produced by Vistry Group Design Studio.

When you have finished with this leaflet please recycle it.

DAXM1 DS05172 / 04.23

Linden
HOMES



The Harcourt

2 bedroom home

Mill Brook Green

Axminster EX13 5HW | 01297 740996

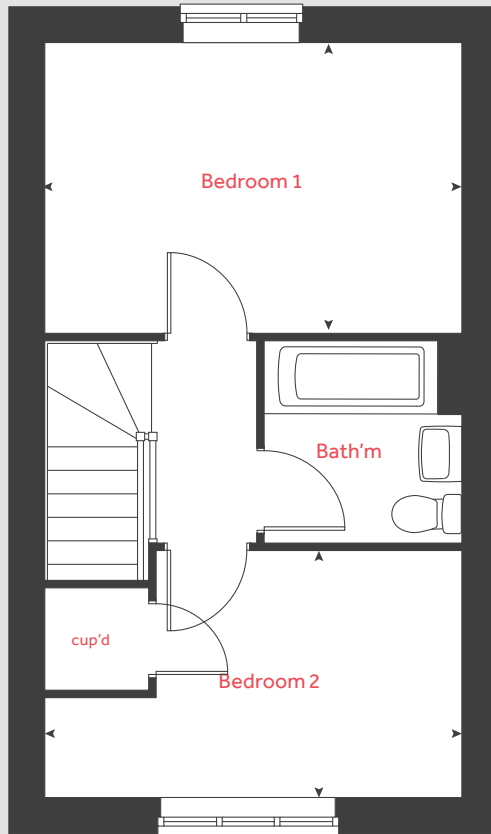
lindenhomes.co.uk

Linden
HOMES

The Harcourt

2 bedroom home

First floor



Ground floor

Kitchen
2.94m x 2.01m 9' 9" x 6' 7"

Dining area
2.01m x 1.59m 6' 7" x 5' 3"

Living room
4.08m x 2.75m 13' 5" x 9' 1"

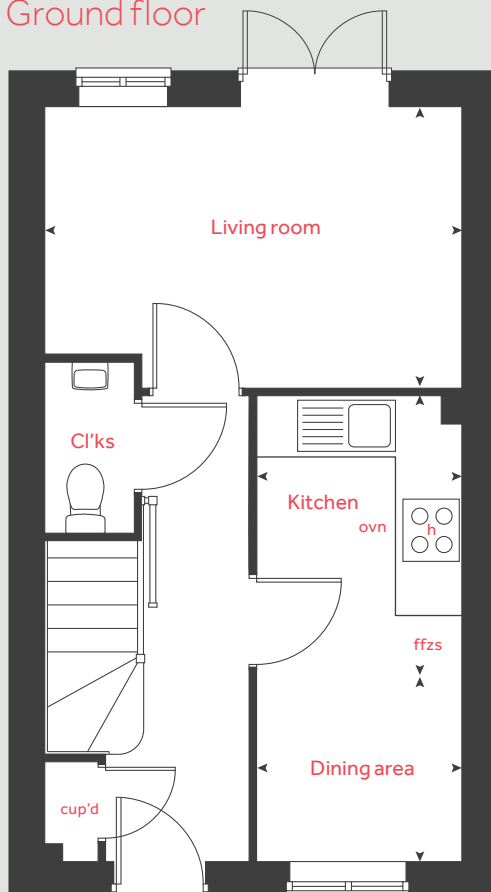
First floor

Bedroom 1
4.08m x 2.84m 13' 5" x 9' 4"

Bedroom 2
4.08m x 2.41m 13' 5" x 7' 11"

h	hob	cup'd	cupboard
ovn	oven	< >	measuring points
ffzs	fridge freezer space		

Ground floor



Please note, floorplans and dimensions are taken from architectural drawings and are for guidance only. Dimensions stated are within a tolerance of plus or minus 50mm. Overall dimensions are usually stated and there may be projections into these. With our continual improvement policy we constantly review our designs and specification to ensure we deliver the best products to our customers. Computer generated images not to scale. Finishes and materials may vary and landscaping is illustrative only. Kitchen layouts are indicative only and may change. To confirm specific details on our homes please see our sales consultant.

Produced by Vistry Group Design Studio.

When you have finished with this leaflet please recycle it.

DAXM1 DS05172 / 04.23

Linden
HOMES



The Emmett

3 bedroom home

Mill Brook Green

Axminster EX13 5HW | 01297 740996

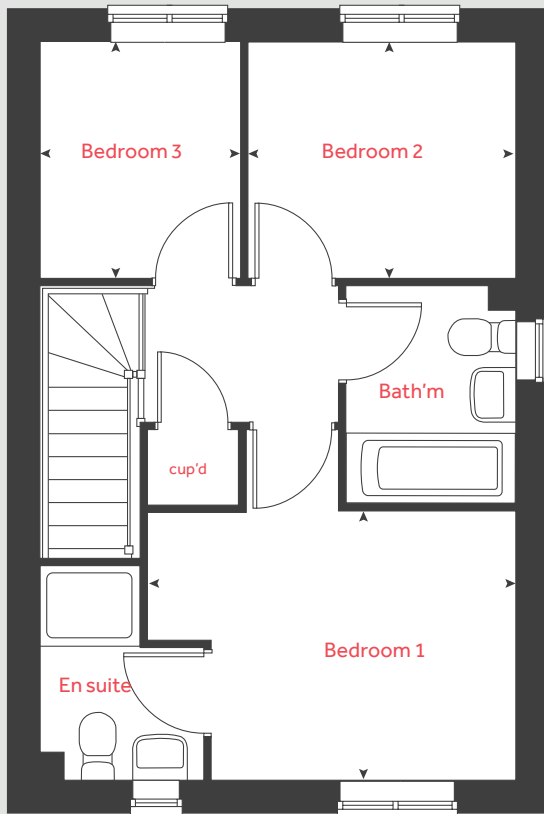
[lindenhomes.co.uk](https://www.lindenhomes.co.uk)

Linden
HOMES

The Emmett

3 bedroom home

First floor



Ground floor

Kitchen / dining room
4.75m x 2.96m 15' 7" x 9' 9"

Living room
4.35m x 3.78m 14' 4" x 12' 5"

First floor

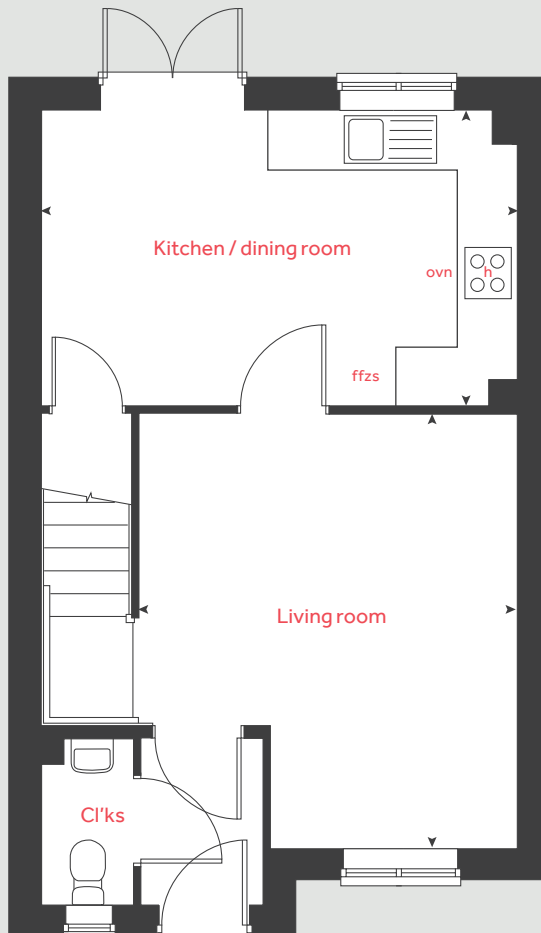
Bedroom 1
3.68m x 2.69m 12' 1" x 8' 10"

Bedroom 2
2.68m x 2.37m 8' 9" x 7' 9"

Bedroom 3
2.37m x 2.00m 7' 9" x 6' 7"

h hob cup'd cupboard
ovn oven < > measuring points
ffzs fridge freezer space

Ground floor



Please note, floorplans and dimensions are taken from architectural drawings and are for guidance only. Dimensions stated are within a tolerance of plus or minus 50mm. Overall dimensions are usually stated and there may be projections into these. With our continual improvement policy we constantly review our designs and specification to ensure we deliver the best products to our customers. Computer generated images not to scale. Finishes and materials may vary and landscaping is illustrative only. Kitchen layouts are indicative only and may change. To confirm specific details on our homes please see our sales consultant.

Produced by Vistry Group Design Studio.

When you have finished with this leaflet please recycle it.

DAXM1 DS05172 / 04.23

Linden
HOMES



The Eveleigh

3 bedroom home

Mill Brook Green

Axminster EX13 5HW | 01297 740996

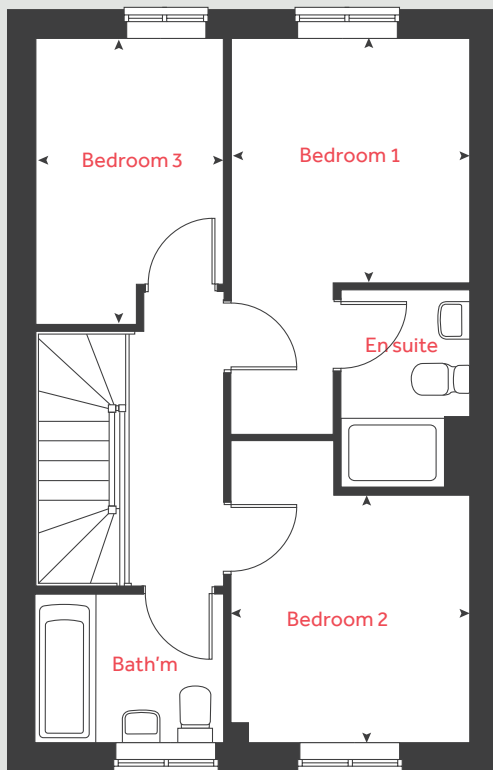
lindenhomes.co.uk

Linden
HOMES

The Eveleigh

3 bedroom home

First floor



Ground floor

Kitchen / dining area
4.78m x 2.80m 15' 8" x 9' 2"

Living room
4.98m x 3.20m 16' 4" x 10' 6"

First floor

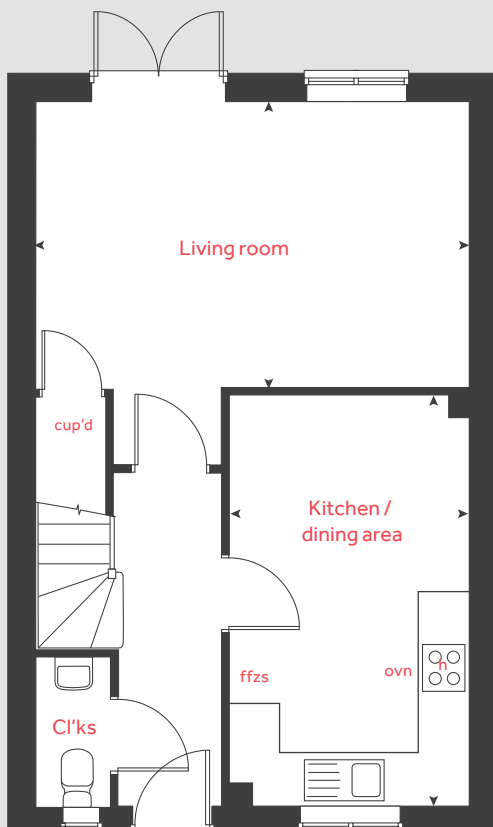
Bedroom 1
2.78m x 2.72m 9' 2" x 8' 11"

Bedroom 2
2.90m x 2.78m 9' 6" x 9' 2"

Bedroom 3
3.20m x 2.12m 10' 6" x 7' 0"

h	hob	cup'd	cupboard
ovn	oven	< >	measuring points
ffzs	fridge freezer space		

Ground floor



Please note, floorplans and dimensions are taken from architectural drawings and are for guidance only. Dimensions stated are within a tolerance of plus or minus 50mm. Overall dimensions are usually stated and there may be projections into these. With our continual improvement policy we constantly review our designs and specification to ensure we deliver the best products to our customers. Computer generated images not to scale. Finishes and materials may vary and landscaping is illustrative only. Kitchen layouts are indicative only and may change. To confirm specific details on our homes please see our sales consultant.

Produced by Vistry Group Design Studio.

When you have finished with this leaflet please recycle it.

DAXM1 DS05172 / 04.23

Linden
HOMES



The Mountford

3 bedroom home

Mill Brook Green

Axminster EX13 5HW | 01297 740996

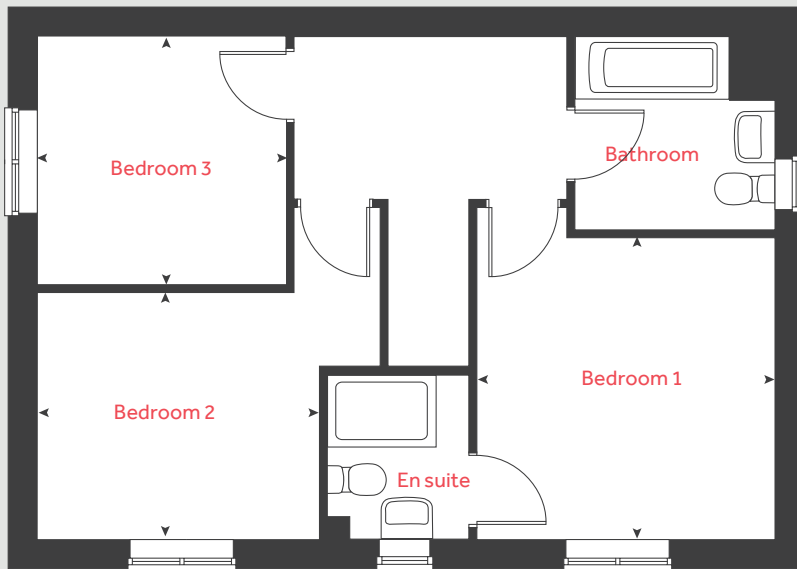
[lindenhomes.co.uk](https://www.lindenhomes.co.uk)

Linden
HOMES

The Mountford

3 bedroom home

First floor



Ground floor

Kitchen / dining area
5.59m x 2.70m 18' 4" x 8' 10"

Living room
5.59m x 3.11m 18' 4" x 10' 3"

First floor

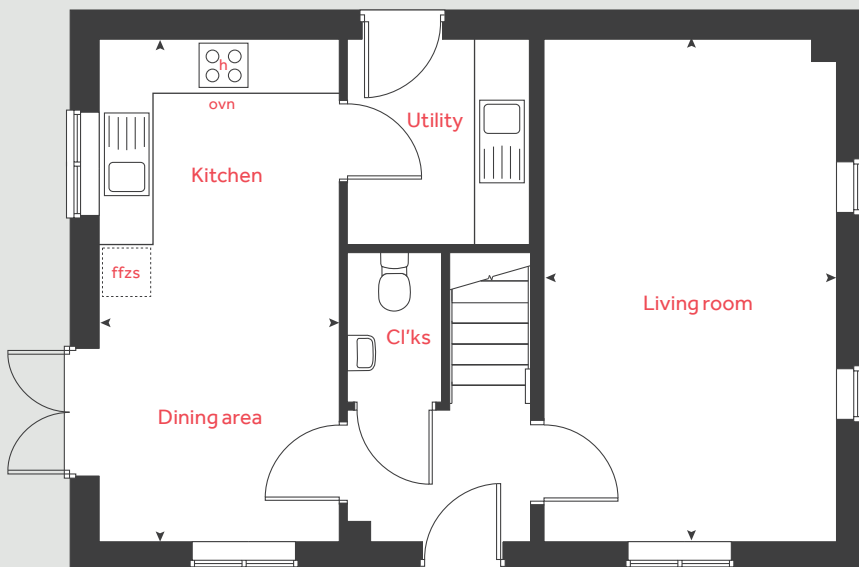
Bedroom 1
3.36m x 3.19m 11' 1" x 10' 6"

Bedroom 2
3.15m x 2.75m 10' 4" x 9' 0"

Bedroom 3
2.76m x 2.76m 9' 1" x 9' 1"

h	hob	cup'd	cupboard
ovn	oven	<	measuring points
ffzs	fridge freezer space	>	

Ground floor



Please note, floorplans and dimensions are taken from architectural drawings and are for guidance only. Dimensions stated are within a tolerance of plus or minus 50mm. Overall dimensions are usually stated and there may be projections into these. With our continual improvement policy we constantly review our designs and specification to ensure we deliver the best products to our customers. Computer generated images not to scale. Finishes and materials may vary and landscaping is illustrative only. Kitchen layouts are indicative only and may change. To confirm specific details on our homes please see our sales consultant.

Produced by Vistry Group Design Studio.

When you have finished with this leaflet please recycle it.

DAXM1 DS05172 / 04.23

Linden
HOMES



The Becket

3 bedroom home

Mill Brook Green

Axminster EX13 5HW | 01297 740996

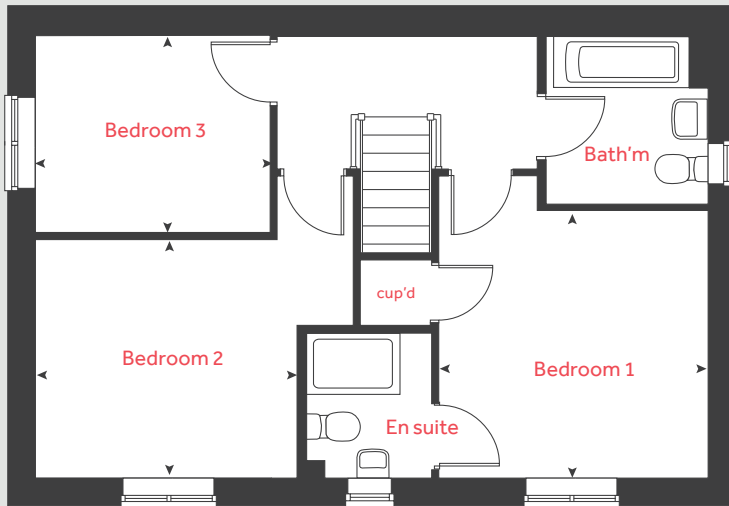
lindenhomes.co.uk

Linden
HOMES

The Becket

3 bedroom home

First floor



Ground floor

Kitchen / dining area

5.59m x 2.94m 18' 4" x 9' 8"

Living room

5.59m x 3.33m 18' 4" x 10' 11"

First floor

Bedroom 1

3.41m x 3.36m 11' 2" x 11' 1"

Bedroom 2

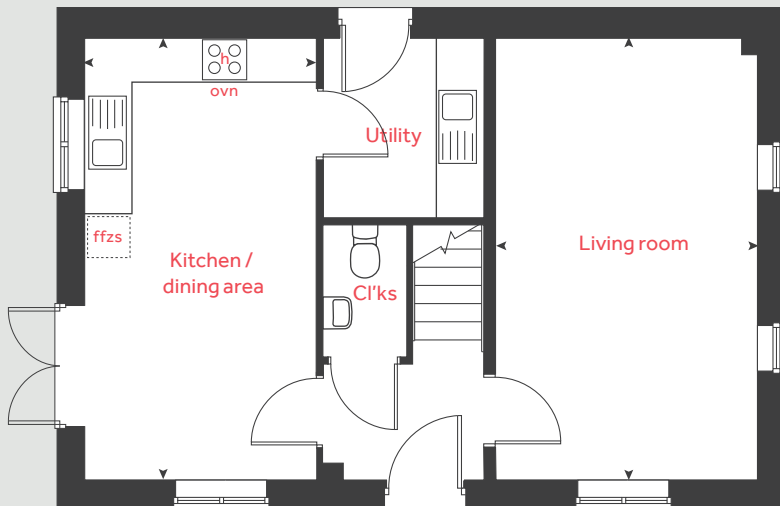
3.34m x 3.00m 10' 11" x 9' 10"

Bedroom 3

2.99m x 2.51m 9' 10" x 8' 3"

h	hob	cup'd	cupboard
ovn	oven	< >	measuring points
ffzs	fridge freezer space		

Ground floor



Please note, floorplans and dimensions are taken from architectural drawings and are for guidance only. Dimensions stated are within a tolerance of plus or minus 50mm. Overall dimensions are usually stated and there may be projections into these. With our continual improvement policy we constantly review our designs and specification to ensure we deliver the best products to our customers. Computer generated images not to scale. Finishes and materials may vary and landscaping is illustrative only. Kitchen layouts are indicative only and may change. To confirm specific details on our homes please see our sales consultant.

Produced by Vistry Group Design Studio.

When you have finished with this leaflet please recycle it.

DAXM1 DS05172 / 04.23

Linden
HOMES



The Buckland

4 bedroom home

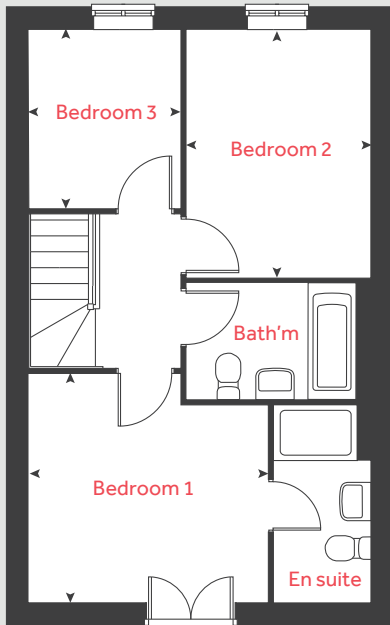
Mill Brook Green

Axminster EX13 5HW | 01297 740996

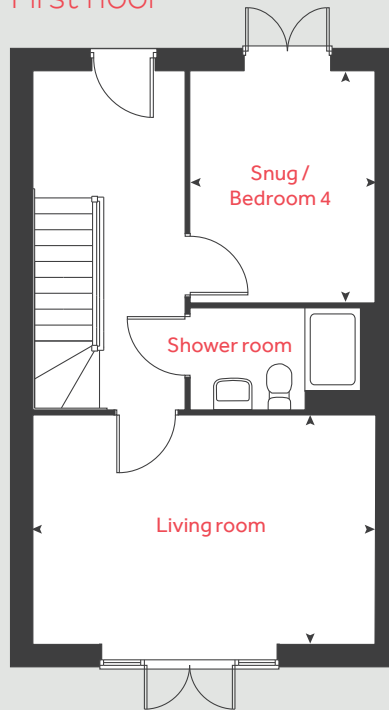
[lindenhomes.co.uk](https://www.lindenhomes.co.uk)

Linden
HOMES

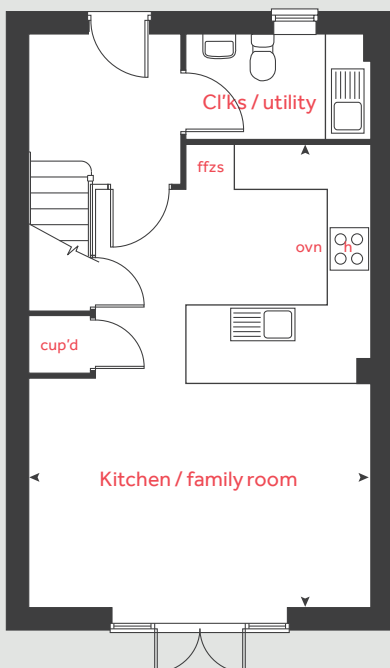
Second floor



First floor



Ground floor



The Buckland

4 bedroom home

Ground floor

Kitchen / family room
6.70m x 4.97m 22' 0" x 16' 4"

First floor

Snug / Bedroom 4
3.37m x 2.67m 11' 1" x 8' 9"
Living room
4.97m x 3.32m 16' 4" x 10' 11"

Second floor

Bedroom 3
2.59m x 2.20m 8' 6" x 7' 3"
Bedroom 2
3.58m x 2.67m 11' 9" x 8' 9"
Bedroom 1
3.46m x 3.32m 11' 4" x 10' 11"

h hob cup'd cupboard
ovn oven measuring points
ffzs fridge freezer space

Please note, floorplans and dimensions are taken from architectural drawings and are for guidance only. Dimensions stated are within a tolerance of plus or minus 50mm. Overall dimensions are usually stated and there may be projections into these. With our continual improvement policy we constantly review our designs and specification to ensure we deliver the best products to our customers. Computer generated images not to scale. Finishes and materials may vary and landscaping is illustrative only. Kitchen layouts are indicative only and may change. To confirm specific details on our homes please see our sales consultant.

Produced by Vistry Group Design Studio.

When you have finished with this leaflet please recycle it.

DAXM1 DS05172 / 04.23

Linden HOMES



The Mylne

4 bedroom home

Mill Brook Green

Axminster EX13 5HW | 01297 740996

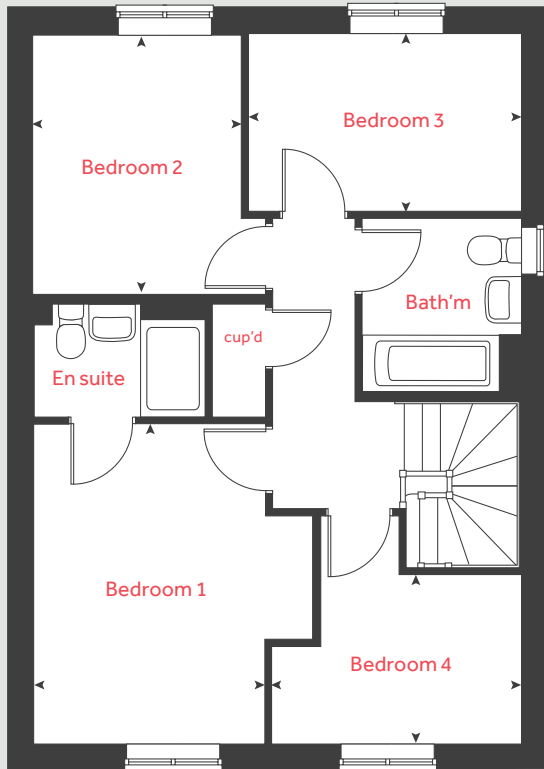
lindenhomes.co.uk

Linden
HOMES

The Mylne

4 bedroom home

First floor



Ground floor

Kitchen / dining / family area
6.04m x 3.75m 19' 10" x 12' 4"

Living room
4.83m x 3.39m 15' 10" x 11' 2"

First floor

Bedroom 1
3.93m x 2.86m 12' 11" x 9' 5"

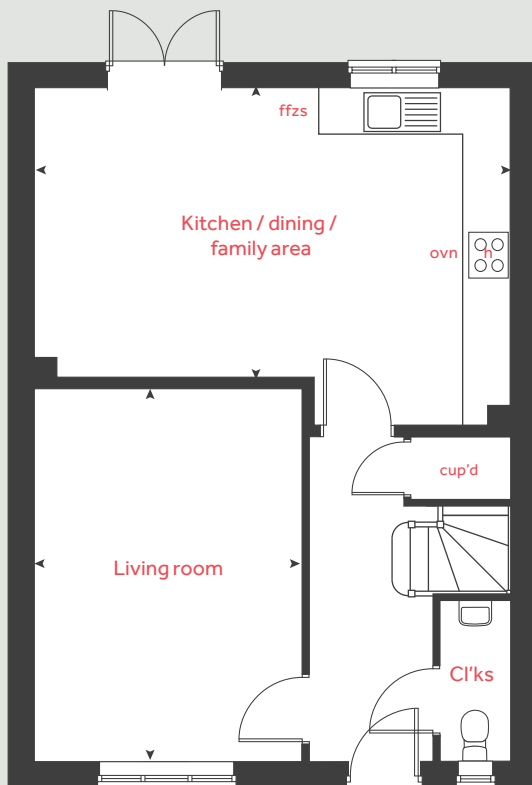
Bedroom 2
3.20m x 2.56m 10' 6" x 8' 5"

Bedroom 3
3.39m x 2.20m 11' 2" x 7' 3"

Bedroom 4
3.10m x 2.10m 10' 2" x 6' 11"

h	hob	cup'd	cupboard
ovn	oven	◀ ▶	measuring points
ffzs	fridge freezer space		

Ground floor



The floor plan has been produced for illustrative purposes only. Room sizes shown are between arrow points as indicated on plan. The dimensions have tolerances of + or -50mm and should not be used other than for general guidance. If specific dimensions are required, enquiries should be made to the sales consultant. The floor plans shown are not to scale. Measurements are based on the original drawings. Slight variations may occur during construction.

The illustrations shown are computer generated impressions of how the property may look and are indicative only. External details or finishes may vary on individual plots and homes may be built in either detached or attached styles depending on the development layout. Exact specifications, window styles and whether a property is left or right-handed may differ from plot to plot. Please speak to our sales consultant for specific plot details.

DAXM1 DS10737 / 05.24

Linden HOMES



The Mynster

4 bedroom home

Mill Brook Green

Axminster EX13 5HW | 01297 740996

lindenhomes.co.uk

Linden
HOMES

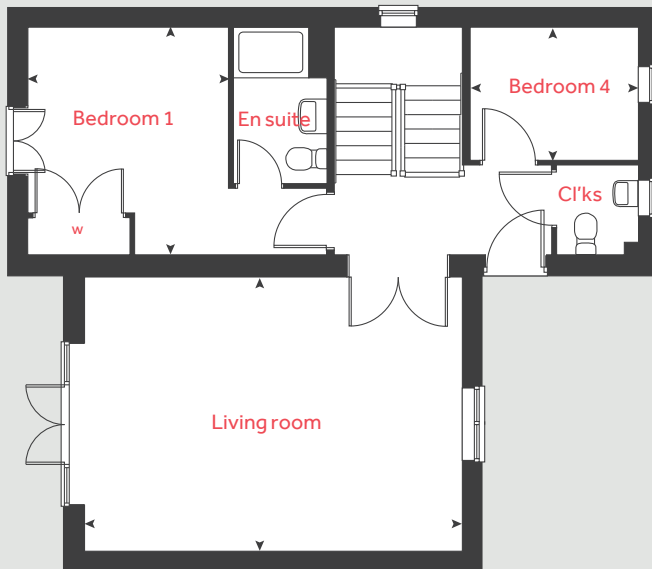
The Mynster

4 bedroom home

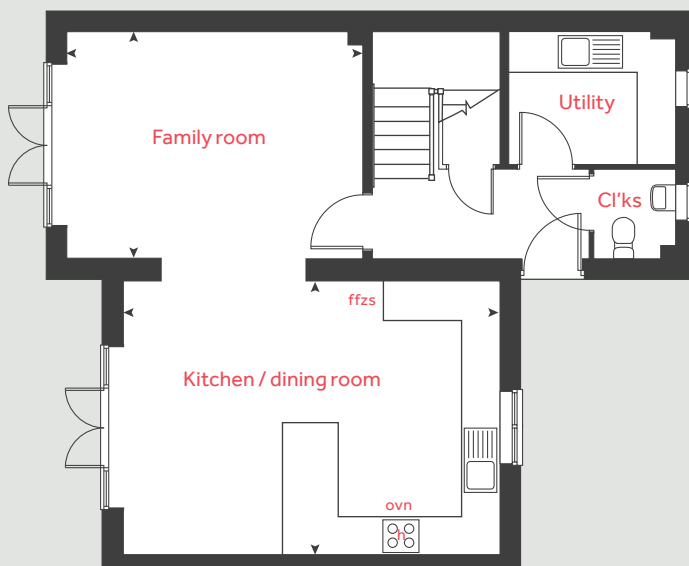
Second floor



First floor



Ground floor



Ground floor

Kitchen / dining room
5.96m x 4.32m 19' 7" x 14' 2"

Family room
4.68m x 3.59m 15' 5" x 11' 9"

First floor

Bedroom 1
3.59m x 3.16m 11' 9" x 10' 5"

Bedroom 4
2.66m x 2.10m 8' 9" x 6' 11"

Living room
5.96m x 4.32m 19' 7" x 14' 2"

Second floor

Bedroom 3
3.59m x 2.70m 11' 9" x 8' 11"

Bedroom 2
3.59m x 2.66m 11' 9" x 8' 9"

h hob wm washing machine
ovn oven cup'd cupboard
ffzs fridge freezer space < > measuring points

Please note, floorplans and dimensions are taken from architectural drawings and are for guidance only. Dimensions stated are within a tolerance of plus or minus 50mm. Overall dimensions are usually stated and there may be projections into these. With our continual improvement policy we constantly review our designs and specification to ensure we deliver the best products to our customers. Computer generated images not to scale. Finishes and materials may vary and landscaping is illustrative only. Kitchen layouts are indicative only and may change. To confirm specific details on our homes please see our sales consultant.

Produced by Vistry Group Design Studio.

When you have finished with this leaflet please recycle it.

DAXM1 DS05172 / 04.23

Linden
HOMES



The Pembroke

4 bedroom home

Mill Brook Green

Axminster EX13 5HW | 01297 740996

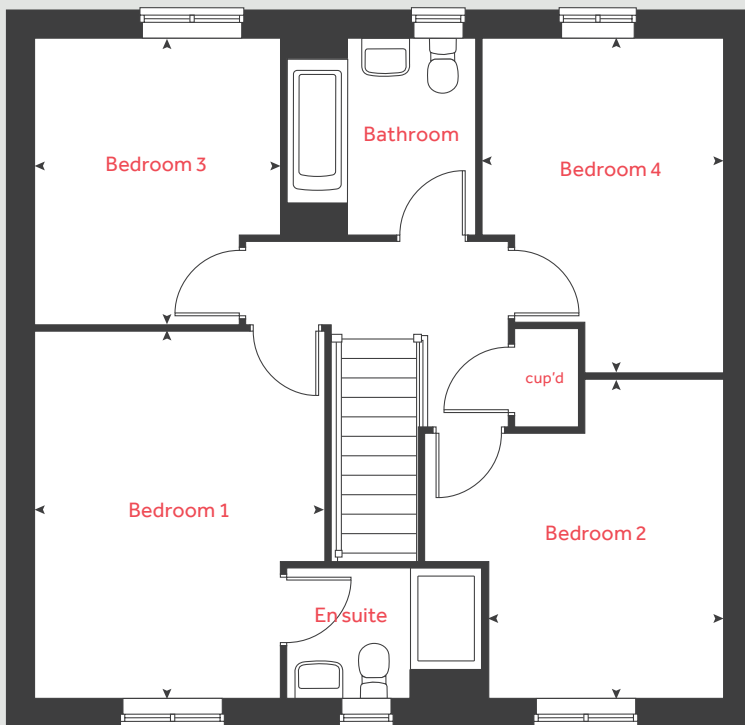
lindenhomes.co.uk

Linden
HOMES

The Pembroke

4 bedroom home

First floor



Ground floor

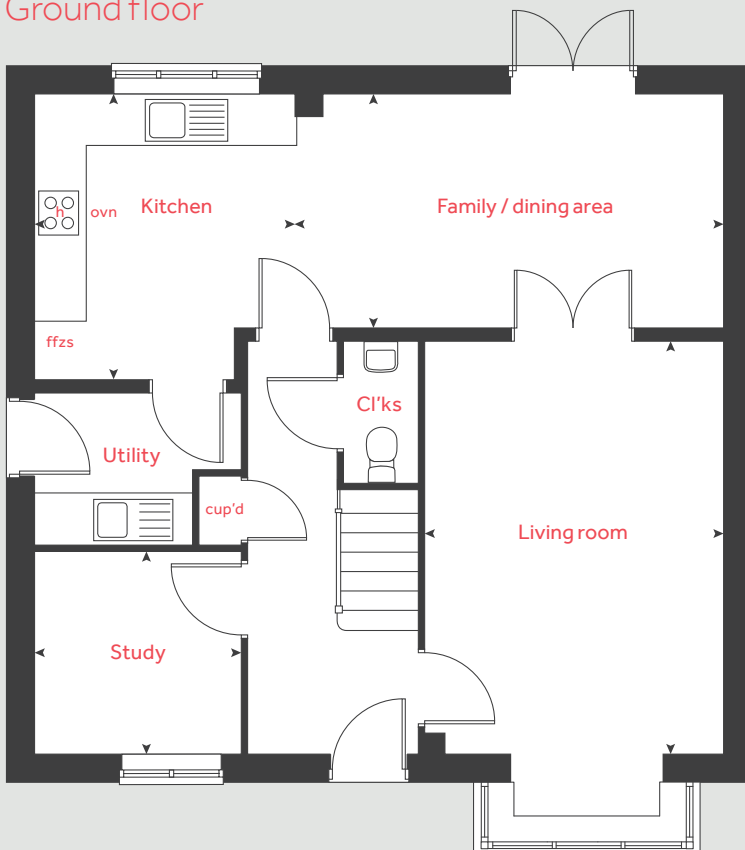
Kitchen	3.35m x 3.05m	11' 0" x 10' 0"
Living room	4.83m x 3.50m	15' 10" x 11' 6"
Family / dining area	5.02m x 2.75m	16' 6" x 9' 0"
Study	2.42m x 2.37m	7' 11" x 7' 9"

First floor

Bedroom 1	4.30m x 3.40m	14' 1" x 11' 2"
Bedroom 2	3.72m x 2.75m	12' 3" x 9' 0"
Bedroom 3	3.35m x 2.87m	11' 0" x 9' 5"
Bedroom 4	3.92m x 2.82m	12' 11" x 9' 3"

h	hob	cup'd	cupboard
ovn	oven	◀ ▶	measuring points
ffzs	fridge freezer space		

Ground floor



Please note, floorplans and dimensions are taken from architectural drawings and are for guidance only. Dimensions stated are within a tolerance of plus or minus 50mm. Overall dimensions are usually stated and there may be projections into these. With our continual improvement policy we constantly review our designs and specification to ensure we deliver the best products to our customers. Computer generated images not to scale. Finishes and materials may vary and landscaping is illustrative only. Kitchen layouts are indicative only and may change. To confirm specific details on our homes please see our sales consultant.

Produced by Vistry Group Design Studio.

When you have finished with this leaflet please recycle it.

DAXM1 DS05172 / 04.23

Linden
HOMES



The Roman

4 bedroom home

Mill Brook Green

Axminster EX13 5HW | 01297 740996

[lindenhomes.co.uk](https://www.lindenhomes.co.uk)

Linden
HOMES

The Roman

4 bedroom home

Ground floor

Kitchen / family / dining area
6.94m x 6.61m 22' 9" x 21' 8"

First floor

Living room
4.81m x 3.64m 15' 10" x 11' 11"

Bedroom 1
3.82m x 3.17m 12' 6" x 10' 5"

Second floor

Bedroom 2
3.64m x 2.76m 11' 11" x 9' 1"

Bedroom 3
3.34m x 3.19m 11' 0" x 10' 6"

Bedroom 4
3.19m x 2.55m 10' 6" x 8' 4"

h hob w wardrobe
ovn oven cup'd cupboard
ffzs fridge freezer space < > measuring points

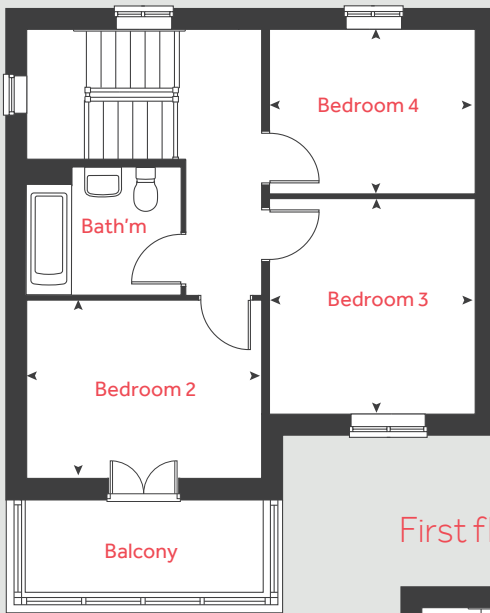
Please note, floorplans and dimensions are taken from architectural drawings and are for guidance only. Dimensions stated are within a tolerance of plus or minus 50mm. Overall dimensions are usually stated and there may be projections into these. With our continual improvement policy we constantly review our designs and specification to ensure we deliver the best products to our customers. Computer generated images not to scale. Finishes and materials may vary and landscaping is illustrative only. Kitchen layouts are indicative only and may change. To confirm specific details on our homes please see our sales consultant.

Produced by Vistry Group Design Studio.

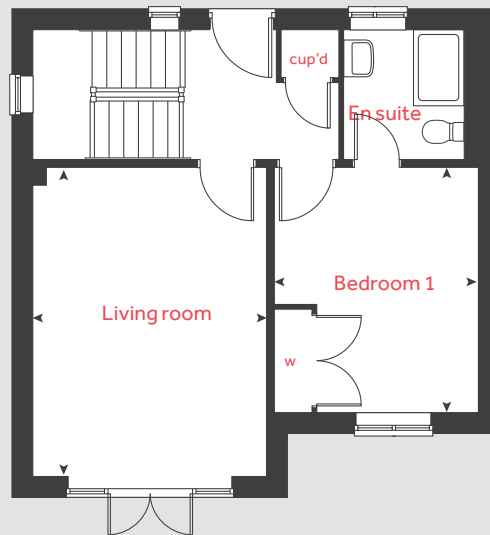
When you have finished with this leaflet please recycle it.

DAXM1 DS05172 / 04.23

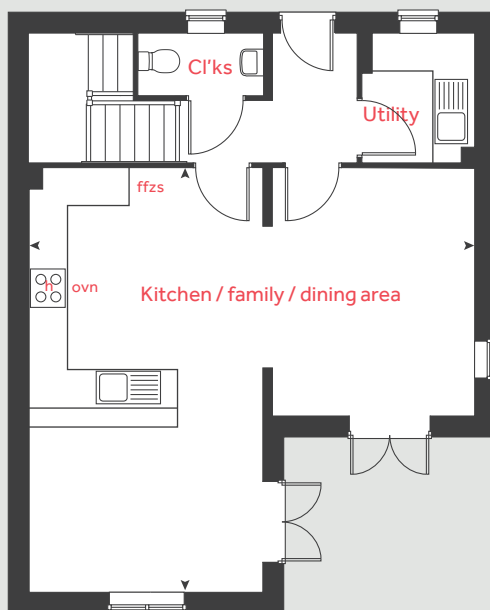
Second floor



First floor



Ground floor



Linden
HOMES

Mill Brook Green

Axminster

Use this guide to see what features are included in your new home. Your sales consultant will be happy to discuss the **Enhance** range of extras available.



- 1 bedroom**
The Weycroft
- 2 bedroom**
The Harcourt
The Ashbee
- 3 bedroom**
The Emmett
The Eveleigh
The Mountford
The Beckett
- 4 bedroom**
The Buckland
The Mynster
The Roman
The Mlyne
The Pembroke

Kitchen

Moores fitted kitchen with laminate worktop	■	■	■	■	■	■	■	■	■
Stainless steel sink and drainer (single bowl) with chrome mixer tap	■	■	■	■	■	■	■	■	■
Stainless steel sink and drainer (single bowl) with chrome mixer tap in utility						■	■		■
Indesit hob (60cm) with Indesit built-in single oven, with stainless steel splashback and integrated silver hood	■	■	■	■	■				
Indesit hob (60 cm) with built-in single oven, with stainless steel splashback and 60cm stainless steel chimney hood						■	■	■	■
Fridge / freezer space	■	■	■	■	■	■	■	■	■
Space for integrated dishwasher with plumbing and electrics		■	■	■	■	■	■	■	■
Space for washing machine with plumbing and electrics in utility						■	■	■	■
Space for washing machine with plumbing and electrics in kitchen	■	■	■	■				■	

Bathrooms and en suite(s)

Ideal Standard contemporary white Tempo Arc sanitary ware suite	■	■	■	■	■	■	■	■	■
Ideal Standard close coupled WC to cloakroom		■	■	■	■	■	■	■	■
Ideal Standard low profile shower tray with glass enclosure in en suite		■	■	■	■	■	■	■	■
Handheld hair wash attachment in bathroom		■	■	■	■	■	■	■	■
Shower over the bath	■	■							
Choice of Standard Porcelanosa wall tiling (splashback, half-height over bath and full-height to shower cubicle)*	■	■	■	■	■	■	■	■	■
Radiator in bathroom / en suite	■	■	■	■	■	■	■	■	■

Doors and Windows

Front door with multi-point security locking system and security chain	■	■	■	■	■	■	■	■	■
Front door number - chrome plated door numeral	■	■	■	■	■	■	■	■	■

Doors and Windows

PVCu double glazing to windows	■	■	■	■	■	■	■	■	■
Double glazed PVCu French doors		■							
Internal doors to be ladder door style pre-primed with Brass Satin finish handles	■	■	■	■	■	■	■	■	■
Paving outside French / bi-fold door and path to garage personnel door (where applicable)		■							

General

White painted walls and smooth white ceilings	■	■	■	■	■	■	■	■	■
TV point to lounge and family room (where applicable)	■	■	■	■	■	■	■	■	■
Master telephone socket (plus to study where shown)	■	■	■	■	■	■	■	■	■
Ideal combi-boiler with honeywell heating control and room thermostat(s)	■	■	■	■	■	■	■	■	■
Thermostatic valves to all radiators (with the exception of rooms with separate thermostat control)	■	■	■	■	■	■	■	■	■
Contemporary lantern to front door and wiring only to the rear door		■	■	■	■	■	■	■	■
Mains wired smoke detectors with battery back-up	■	■	■	■	■	■	■	■	■
Battery powered Carbon Monoxide detector (wall mounted) to be provided for each floor	■	■	■	■	■	■	■	■	■
Power and lighting to garage (where in curtilage of the plot)		■	■	■	■	■	■	■	■
Enclosed fenced rear garden, and garden gate (where applicable)		■	■	■	■	■	■	■	■
NHBC Buildmark cover	■	■	■	■	■	■	■	■	■
First two years' customer service support from Linden Homes	■	■	■	■	■	■	■	■	■

■ Fitted as standard - included in the property
* Subject to stage of construction



2 bedroom Sage Home

Home 114



built
by

Linden
HOMES

2 bedroom Sage Home

Home 114

Ground floor	metres	feet / inches
Kitchen / sitting / dining area	6.93 x 6.04	22' 8" x 19' 9"
Bedroom 1	3.97 x 2.90	13' 1" x 9' 6"
Bedroom 2	2.90 x 2.58	9' 6" x 8' 6"

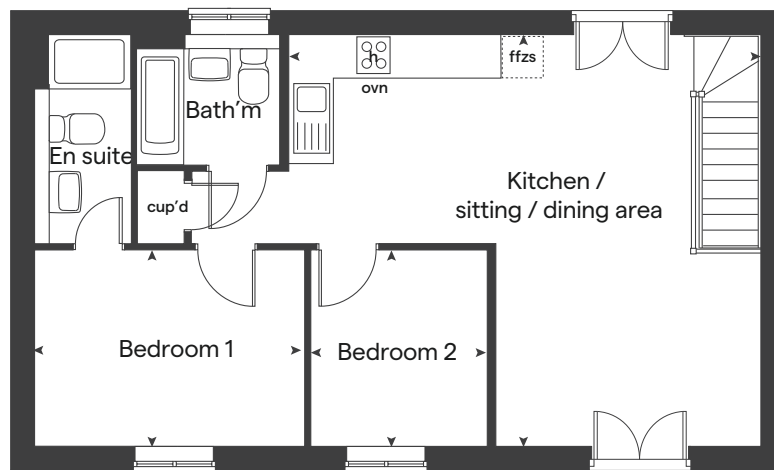
ovn	oven	cup'd	cupboard
h	hob	◀ ▶	measuring points
ffzs	fridge freezer space		

The floorplan has been produced for illustrative purposes only. Room sizes shown are between arrow points as indicated on plan. The dimensions have tolerances of + or -50mm and should not be used other than for general guidance. If specific dimensions are required, enquiries should be made to the sales consultant. The floor plans shown are not to scale. Measurements are based on the original drawings. Slight variations may occur during construction.

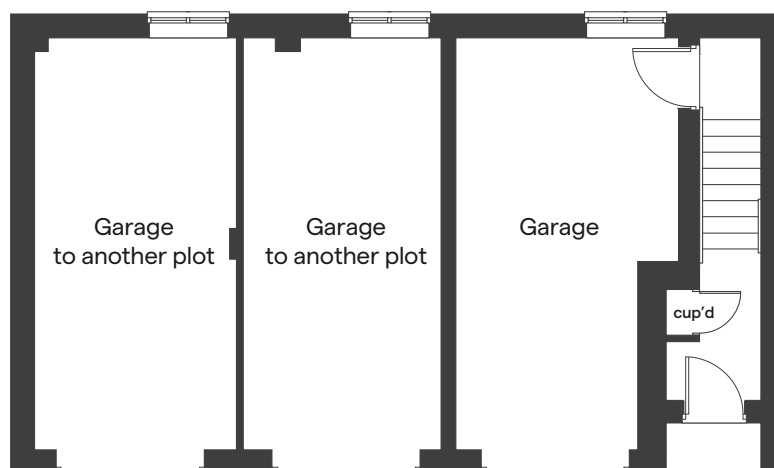
The illustrations shown are computer generated impressions of how the property may look and are indicative only. External details or finishes may vary on individual plots and homes may be built in either detached or attached styles depending on the development layout. Exact specifications, window styles and whether a property is left or right handed may differ from plot to plot. Please speak to our sales consultant for specific plot details.

Produced by the Vistry Group Design Studio.
When you have finished with this leaflet please recycle it.
DAXM1 DS09872 / 05.24

First floor



Ground floor



built by

Linden
HOMES



2 bedroom Sage Home

Homes 227, 228 & 229



Sage
Homes

built
by

Linden
HOMES

2 bedroom Sage Home

Homes 227, 228
& 229

Ground floor	metres	feet / inches
Kitchen	2.94 x 2.01	9' 9" x 6' 7"
Dining area	2.01 x 1.59	6' 7" x 5' 3"
Living room	4.08 x 2.75	13' 5" x 9' 1"

First floor

Bedroom 1	4.08 x 2.84	13' 5" x 9' 4"
Bedroom 2	4.08 x 2.41	13' 5" x 7' 11"

ovn	oven	cup'd	cupboard
h	hob	◀ ▶	measuring points
ffzs	fridge freezer space		

The floorplan has been produced for illustrative purposes only. Room sizes shown are between arrow points as indicated on plan. The dimensions have tolerances of + or -50mm and should not be used other than for general guidance. If specific dimensions are required, enquiries should be made to the sales consultant. The floor plans shown are not to scale. Measurements are based on the original drawings. Slight variations may occur during construction.

The illustrations shown are computer generated impressions of how the property may look and are indicative only. External details or finishes may vary on individual plots and homes may be built in either detached or attached styles depending on the development layout. Exact specifications, window styles and whether a property is left or right handed may differ from plot to plot. Please speak to our sales consultant for specific plot details.

Produced by the Vistry Group Design Studio.

When you have finished with this leaflet please recycle it.

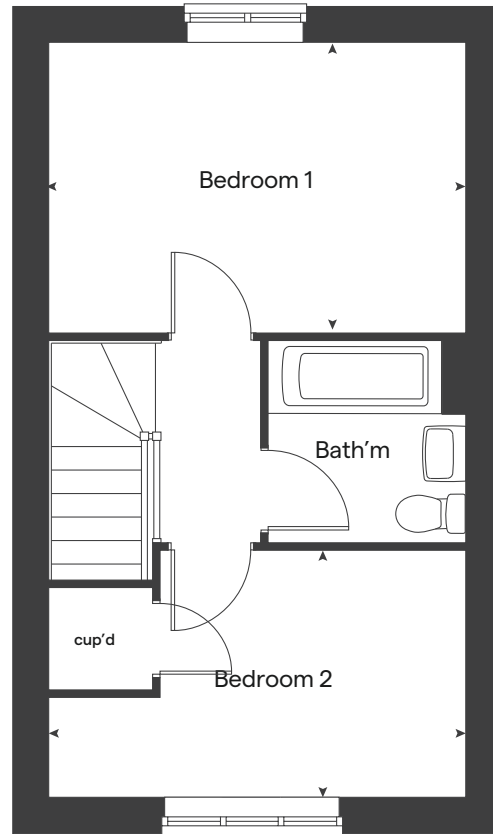
DAXM1 DS09872 / 05.24



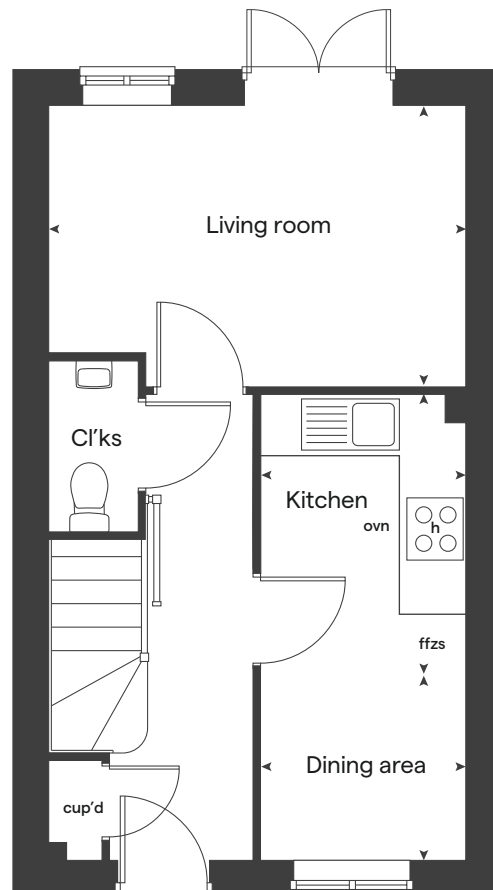
built by

Linden
HOMES

First floor



Ground floor





3 bedroom Sage Home

Homes 231, 232, 233, 234 & 235



built
by

Linden
HOMES

3 bedroom Sage Home

Homes 231, 232,
233, 234 & 235

Ground floor	metres	feet / inches
Kitchen / dining room	4.75 x 2.96	15' 7" x 9' 9"
Living room	4.35 x 3.78	14' 4" x 12' 5"

First floor	metres	feet / inches
Bedroom 1	3.68 x 2.69	12' 1" x 8' 10"
Bedroom 2	2.68 x 2.37	8' 9" x 7' 9"
Bedroom 3	2.37 x 2.00	7' 9" x 6' 7"

ovn	oven	cup'd	cupboard
h	hob	< >	measuring points
ffzs	fridge freezer space		

The floorplan has been produced for illustrative purposes only. Room sizes shown are between arrow points as indicated on plan. The dimensions have tolerances of + or -50mm and should not be used other than for general guidance. If specific dimensions are required, enquiries should be made to the sales consultant.

The floor plans shown are not to scale. Measurements are based on the original drawings. Slight variations may occur during construction.

The illustrations shown are computer generated impressions of how the property may look and are indicative only. External details or finishes may vary on individual plots and homes may be built in either detached or attached styles depending on the development layout. Exact specifications, window styles and whether a property is left or right handed may differ from plot to plot. Please speak to our sales consultant for specific plot details.

Produced by the Vistry Group Design Studio.

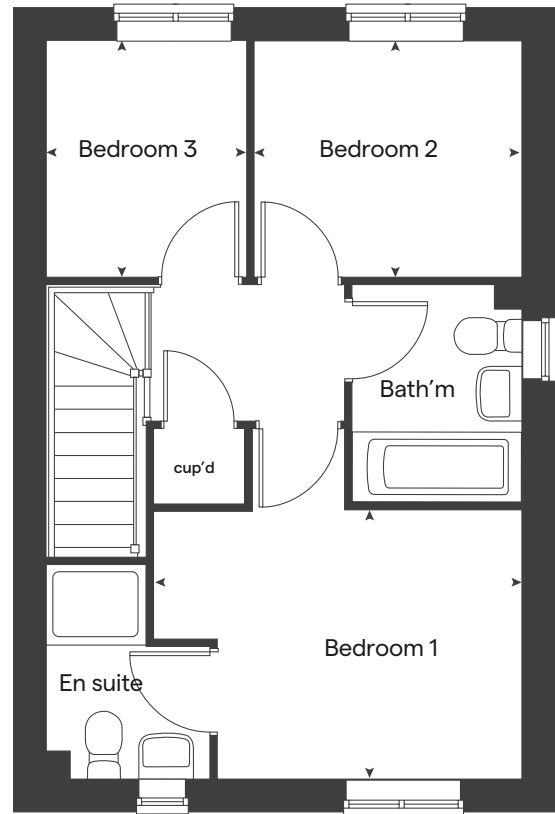
When you have finished with this leaflet please recycle it.
DAXM1 DS09872 / 05.24



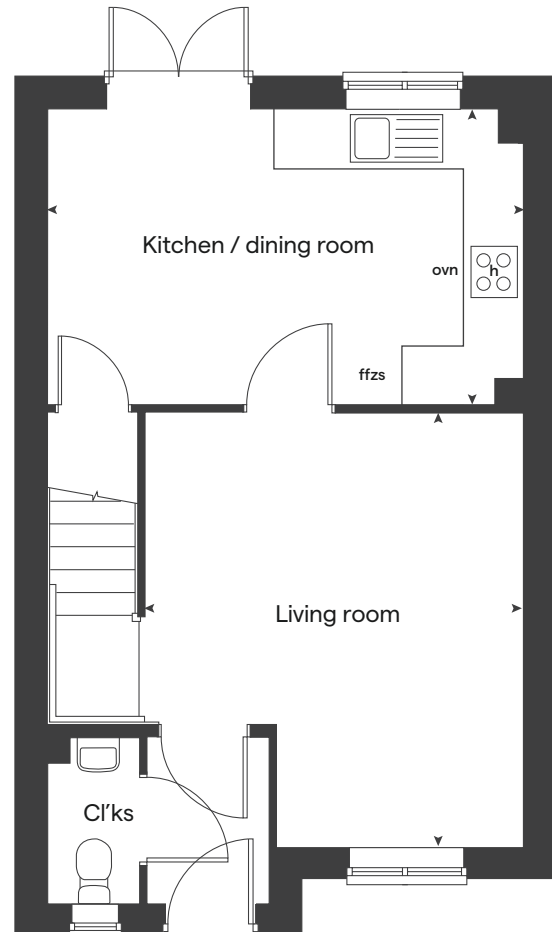
built by

Linden
HOMES

First floor



Ground floor





3 bedroom Sage Home

Homes 117, 223, 224, 225 & 226



built
by

Linden
HOMES

3 bedroom Sage Home

Homes 117, 223,
224, 225 & 226

Ground floor	metres	feet / inches
Kitchen / dining area	4.78 x 2.80	15' 8" x 9' 2"
Living room	4.98 x 3.20	16' 4" x 10' 6"

First floor	metres	feet / inches
Bedroom 1	2.78 x 2.72	9' 2" x 8' 11"
Bedroom 2	2.90 x 2.78	9' 6" x 9' 2"
Bedroom 3	3.20 x 2.12	10' 6" x 7' 0"

ovn	oven	cup'd	cupboard
h	hob	◀ ▶	measuring points
ffzs	fridge freezer space		

The floorplan has been produced for illustrative purposes only. Room sizes shown are between arrow points as indicated on plan. The dimensions have tolerances of + or -50mm and should not be used other than for general guidance. If specific dimensions are required, enquiries should be made to the sales consultant.

The floor plans shown are not to scale. Measurements are based on the original drawings. Slight variations may occur during construction.

The illustrations shown are computer generated impressions of how the property may look and are indicative only. External details or finishes may vary on individual plots and homes may be built in either detached or attached styles depending on the development layout. Exact specifications, window styles and whether a property is left or right handed may differ from plot to plot. Please speak to our sales consultant for specific plot details.

Produced by the Vistry Group Design Studio.

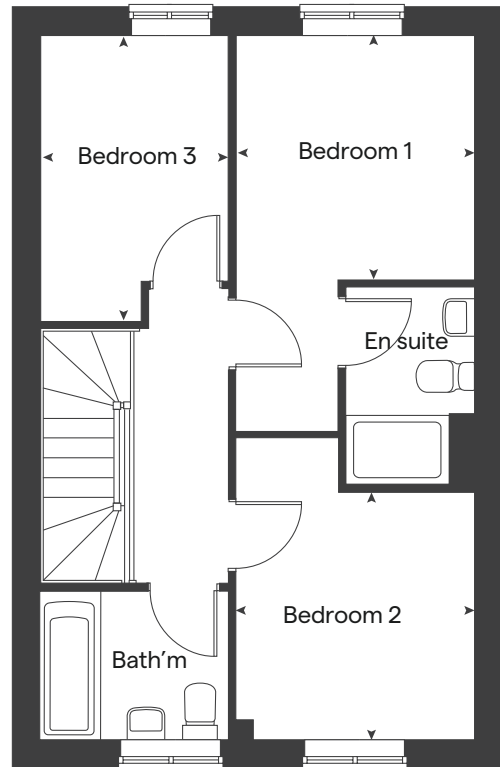
When you have finished with this leaflet please recycle it.
DAXM1 DS09872 / 05.24



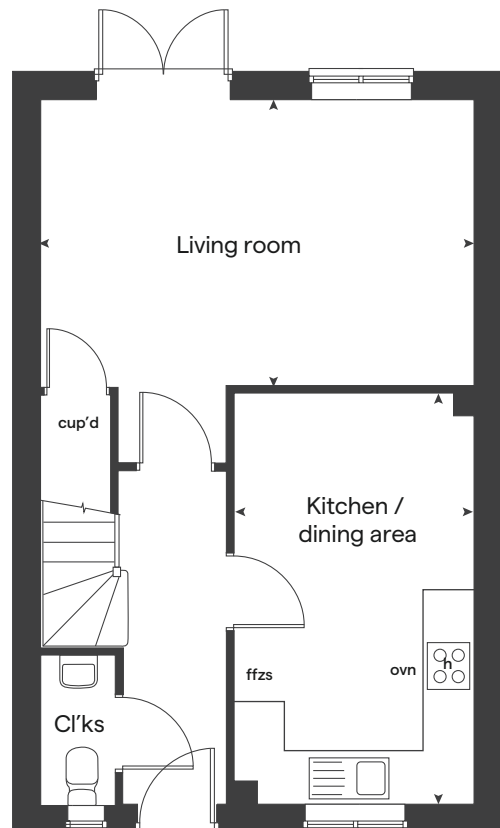
built by

Linden
HOMES

First floor



Ground floor





3 bedroom Sage Home

Homes 115 & 118



built
by

Linden
HOMES

3 bedroom Sage Home

Homes 115 & 118

Ground floor	metres	feet / inches
Kitchen / dining area	5.59 x 2.70	18' 4" x 8' 10"
Living room	5.59 x 3.11	18' 4" x 10' 3"

First floor	metres	feet / inches
Bedroom 1	3.36 x 3.19	11' 1" x 10' 6"
Bedroom 2	3.15 x 2.75	10' 4" x 9' 0"
Bedroom 3	2.76 x 2.76	9' 1" x 9' 1"

ovn	oven	cup'd	cupboard
h	hob	◀ ▶	measuring points
ffzs	fridge freezer space		

The floorplan has been produced for illustrative purposes only. Room sizes shown are between arrow points as indicated on plan. The dimensions have tolerances of + or -50mm and should not be used other than for general guidance. If specific dimensions are required, enquiries should be made to the sales consultant.

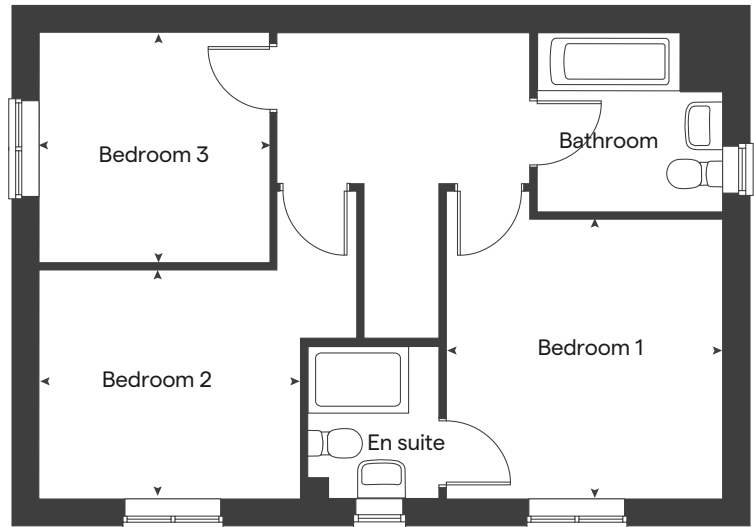
The floor plans shown are not to scale. Measurements are based on the original drawings. Slight variations may occur during construction.

The illustrations shown are computer generated impressions of how the property may look and are indicative only. External details or finishes may vary on individual plots and homes may be built in either detached or attached styles depending on the development layout. Exact specifications, window styles and whether a property is left or right handed may differ from plot to plot. Please speak to our sales consultant for specific plot details.

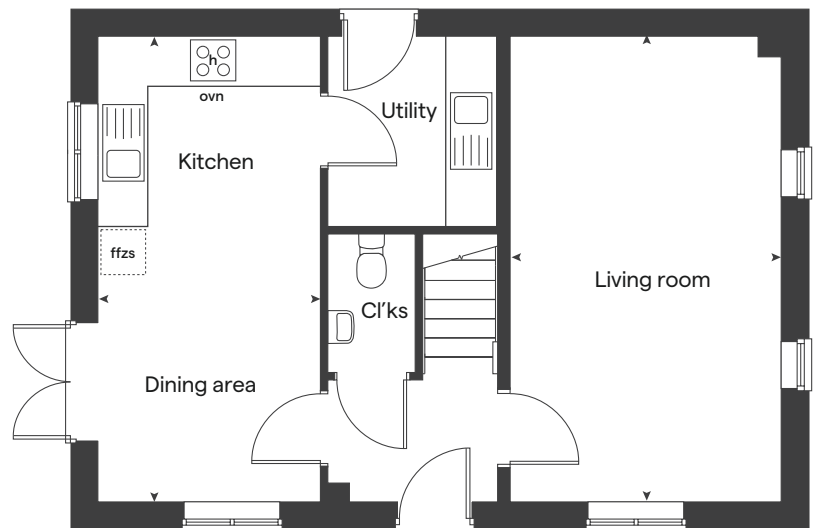
Produced by the Vistry Group Design Studio.

When you have finished with this leaflet please recycle it.
DAXM1 DS09872 / 05.24

First floor



Ground floor



built by

Linden
HOMES



4 bedroom Sage Home

Homes 213 & 221



built
by

Linden
HOMES

4 bedroom Sage Home

Homes 213 & 221

Ground floor	metres	feet / inches
Kitchen / dining / family area	6.04 x 3.75	19' 10" x 12' 4"
Living room	4.83 x 3.39	15' 10" x 11' 2"

First floor	metres	feet / inches
Bedroom 1	3.93 x 2.86	12' 11" x 9' 5"
Bedroom 2	3.20 x 2.56	10' 6" x 8' 5"
Bedroom 3	3.39 x 2.20	11' 2" x 7' 3"
Bedroom 4	3.10 x 2.10	10' 2" x 6' 11"

ovn	oven	cup'd	cupboard
h	hob	◀ ▶	measuring points
ffzs	fridge freezer space		

The floorplan has been produced for illustrative purposes only. Room sizes shown are between arrow points as indicated on plan. The dimensions have tolerances of + or -50mm and should not be used other than for general guidance. If specific dimensions are required, enquiries should be made to the sales consultant. The floor plans shown are not to scale. Measurements are based on the original drawings. Slight variations may occur during construction.

The illustrations shown are computer generated impressions of how the property may look and are indicative only. External details or finishes may vary on individual plots and homes may be built in either detached or attached styles depending on the development layout. Exact specifications, window styles and whether a property is left or right handed may differ from plot to plot. Please speak to our sales consultant for specific plot details.

Produced by the Vistry Group Design Studio.

When you have finished with this leaflet please recycle it.

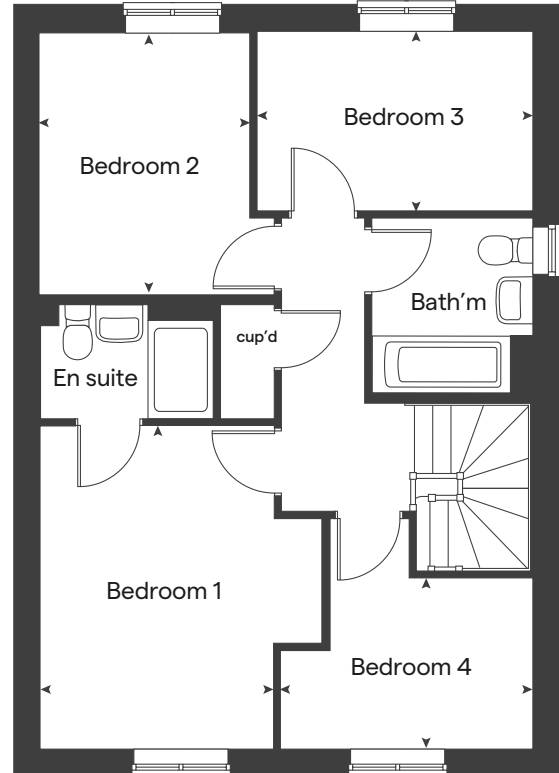
DAXM1 DS10737 / 05.24



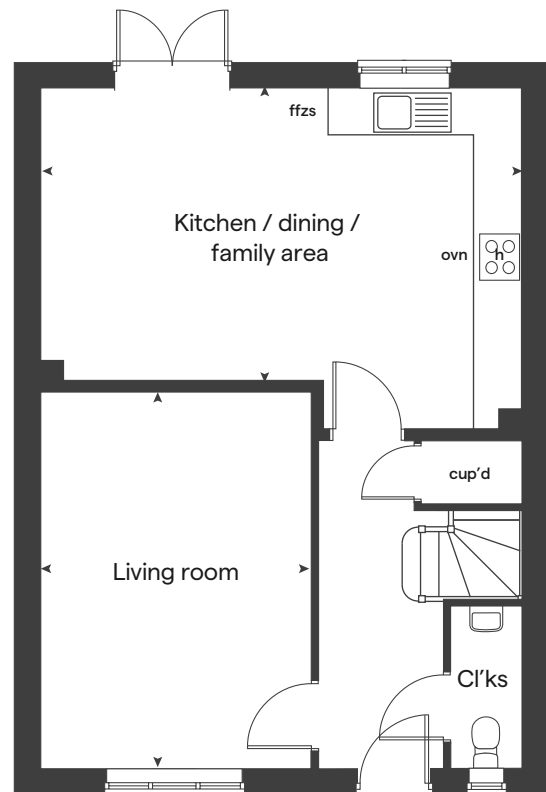
built by

Linden HOMES

First floor



Ground floor



Mill Brook Green

Axminster

Use this guide to see what features are included in your new home.



Kitchen

	2 bedroom Homes 227, 228 & 229 Home 114	3 bedroom Homes 231, 232, 233, 234 & 235 Homes 117, 223, 224, 225 & 226 Homes 115 & 118	4 bedroom Homes 213 & 221
Symphony Konzept range kitchen with laminate worktop	■ ■	■ ■ ■	■
Stainless steel sink and drainer (single bowl) with chrome mixer tap	■ ■	■ ■ ■	■
Stainless steel sink and drainer (single bowl) with chrome mixer tap in utility			■
Indesit hob (60cm) with Indesit built-in single under oven, with stainless steel splashback and integrated silver hood	■ ■	■ ■ ■	
Indesit hob (60 cm) with built-in single under oven, with stainless steel splashback and 60cm stainless steel chimney hood			■
White pendant light holder	■ ■	■ ■ ■	■
Fridge / freezer space	■ ■	■ ■ ■	■
Space for integrated dishwasher with plumbing and electrics	■ ■	■ ■ ■	■
Space for washing machine with plumbing and electrics in kitchen	■ ■	■ ■	■
Space for washing machine with plumbing and electrics in utility		■	

Bathrooms and en suite(s)

Ideal Standard contemporary white Tempo sanitary ware	■ ■	■ ■ ■	■
Ideal Standard close coupled WC to cloakroom	■	■ ■ ■	■
Ideal Standard low profile shower tray with glass enclosure in en suite		■ ■ ■	■
Handheld hair wash attachment in bathroom		■ ■ ■	■
Shower over the bath	■		
Choice of standard Porcelanosa wall tiling (splashback, 450mm height over bath, and full-height to shower cubicle)*	■ ■	■ ■ ■	■
White batten light holder	■ ■	■ ■ ■	■

■ Fitted as standard - included in the property
* Subject to stage of construction

Doors and Windows

	2 bedroom Homes 227, 228 & 229 Home 114	3 bedroom Homes 231, 232, 233, 234 & 235 Homes 117, 223, 224, 225 & 226 Homes 115 & 118	4 bedroom Homes 213 & 221
Front door with multi-point security locking system and security chain	■ ■	■ ■ ■	■
PVCu double glazing to windows	■ ■	■ ■ ■	■
Double glazed PVCu French doors	■	■ ■ ■	■
Internal doors to be ladder door style pre-primed with Brass Satin finish handles	■ ■	■ ■ ■	■
Paving outside French / bi-fold door and path to garage personnel door (where applicable)	■ ■	■ ■ ■	■

General

White painted walls and smooth white ceilings	■ ■	■ ■ ■	■
TV point to lounge and family room (where applicable)	■ ■	■ ■ ■	■
Master telephone socket to lounge and study where applicable	■ ■	■ ■ ■	■
Ideal combi-boiler with Honeywell heating control and room thermostat(s)	■ ■	■ ■ ■	■
Thermostatic valves to all radiators (with the exception of rooms with separate thermostat control)	■ ■	■ ■ ■	■
Contemporary lantern to front door and wiring only to the rear door	■ ■	■ ■ ■	■
Mains wired smoke detectors with battery back-up to each floor (where applicable)	■ ■	■ ■ ■	■
Battery powered Carbon Monoxide detector (wall mounted) to be provided to ground floor	■ ■	■ ■ ■	■
Power and lighting to garage where in curtilage of the plot (where applicable)	■	■ ■	■
Enclosed fenced rear garden, and garden gate (where applicable)	■ ■	■ ■ ■	■
NHBC Buildmark choice cover	■ ■	■ ■ ■	■
First two years' customer service support from Linden Homes	■ ■	■ ■ ■	■