

Green Oaks

Quedgeley



Linden
HOMES



Around the local neighbourhood

- | | | |
|--|--|--|
| 1 Tesco Express GL2 2GT | 5 Kingsway health centre GL2 2FY | 9 Kingsway Manor Farm Park GL2 2AU |
| 2 Asda GL2 2SN | 6 Kingsway primary school GL2 2ZZ | 10 Kingsway community centre GL2 2GT |
| 3 Kingsway local centre GL2 2GT | 7 Waterwells primary school GL2 2FX | 11 Buckenham Walk tennis courts GL2 2ES |
| 4 The Olympus Centre retail park GL2 4QL | 8 Severn Vale secondary school GL2 4PR | 12 Quedgeley health and fitness club GL2 4PR |

Green Oaks Quedgeley

A collection of 2, 3 and 4 bedroom homes close to the vibrant city of Gloucester and with excellent transport links.

This exciting new development in Quedgeley is on the outskirts of the historic Cathedral city of Gloucester and perfectly placed for easy access to the M5.

There are convenience shops, supermarkets, schools, medical, sports and leisure facilities close by and the city centre is a 15 minute bus, or car drive away. The popular Gloucester Quays designer outlet and scenic docks area with its restaurants, bars, cinema and open air markets is only 4 miles away.

The beautiful Cotswolds, an Area of Outstanding Natural Beauty, is only a few miles' drive, as is the scenic Severn Estuary and Robinswood Hill Country Park. Trains from the city centre's railway station run to Bristol, Bath, Cheltenham, Worcester, Swindon, London Paddington and Cardiff. For international travel, Bristol Airport is just 43 miles away.

Green Oaks Quedgeley



4 bedroom homes

- The Aldridge
- The Foulston
- The Knightley
- The Pembroke
- The Leverton
- The Harford
- Sage Home

3 bedroom homes

- The Alwin
- The Becket
- The Elmslie
- Sage Home

2 bedroom home

- The Ashbee

Pre-sold homes

- 1 bedroom home
- 2 bedroom home
- 3 bedroom home
- 4 bedroom home

Sage Homes
built by Bovis Homes

bcp bin collection point **gg** gas governor
ss substation **v** visitor parking space
cp car port

Please note: Hedgehog highways apply to fences.
Please see sales consultant for further details.



The Ashbee

2 bedroom home

Green Oaks

Quedgeley, Gloucester GL2 2FY | **01452 404895**

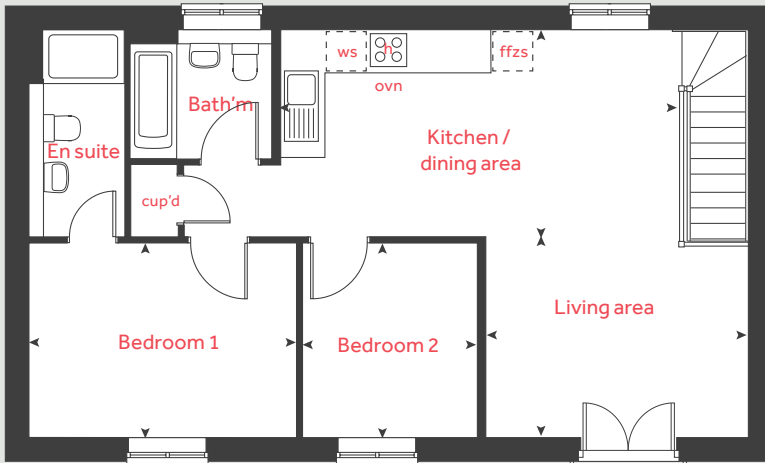
lindenhomes.co.uk

Linden
HOMES

The Ashbee

2 bedroom home

First floor



| First floor | metres | feet / inches |
|-----------------------|-------------|-----------------|
| Kitchen / dining area | 5.80 x 3.06 | 19' 0" x 10' 0" |
| Living area | 3.85 x 2.93 | 12' 7" x 9' 7" |
| Bedroom 1 | 3.98 x 2.88 | 13' 0" x 9' 5" |
| Bedroom 2 | 2.88 x 2.59 | 9' 5" x 8' 5" |

h hob ws washing machine space
 ovn oven cup'd cupboard
 ffzs fridge freezer space < > measuring points

The Ashbee | Green Oaks, Quedgeley |

The floorplan has been produced for illustrative purposes only. Room sizes shown are between arrow points as indicated on plan. The dimensions have tolerances of + or - 50mm and should not be used other than for general guidance. If specific dimensions are required, enquiries should be made to the sales consultant. The floor plans shown are not to scale. Measurements are based on the original drawings. Slight variations may occur during construction.

The illustrations shown are computer generated impressions of how the property may look and are indicative only. External details or finishes may vary on individual plots and homes may be built in either detached or attached styles depending on the development layout. Exact specifications, window styles and whether a property is left or right-handed may differ from plot to plot. Please speak to our sales consultant for specific plot details.

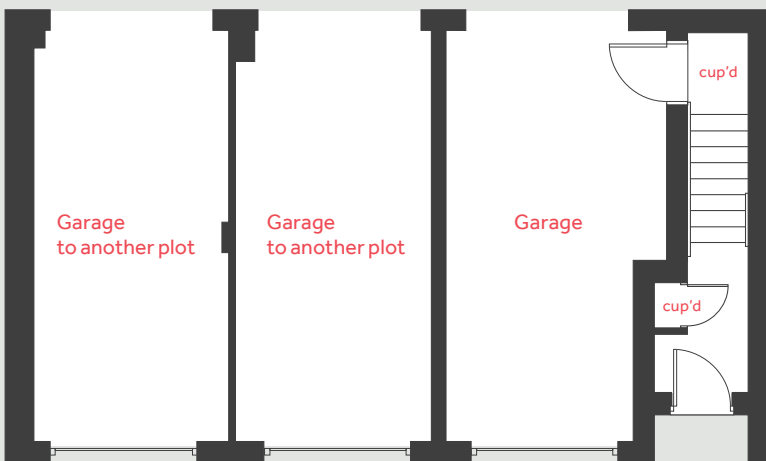
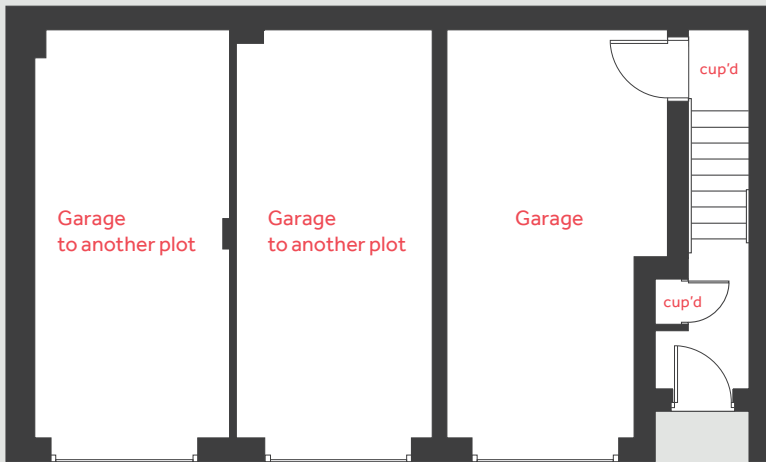
- 1 Alternative layout to selected plots only. Please see sales consultant for further details.

Produced by Vistry Group Design Studio.

When you have finished with this leaflet please recycle it.

130-HQUE2 DS08334 / 09.24

Ground floor



Linden
 HOMES



The Becket

3 bedroom home

Green Oaks

Quedgeley, Gloucester GL2 2FY | **01452 404895**

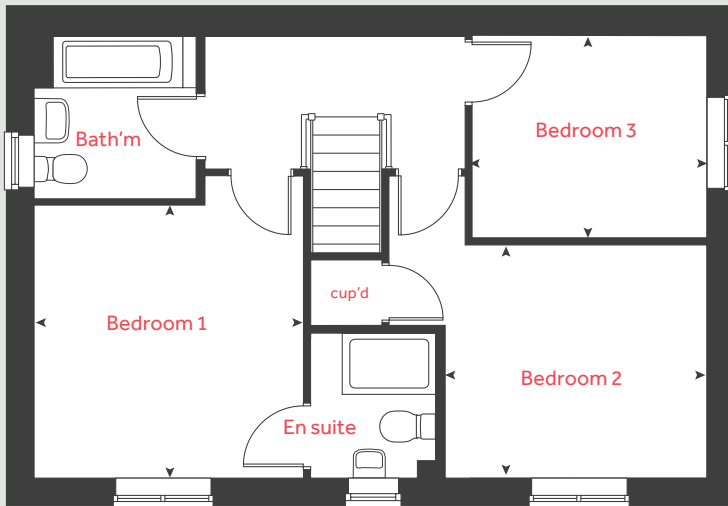
lindenhomes.co.uk

Linden
HOMES

The Becket

3 bedroom home

First floor



Ground floor

Kitchen / dining area
5.59m x 2.90m 18' 4" x 9' 6"

Living room
5.59m x 3.33m 18' 4" x 10' 11"

First floor

Bedroom 1
3.43m x 3.39m 11' 3" x 11' 2"

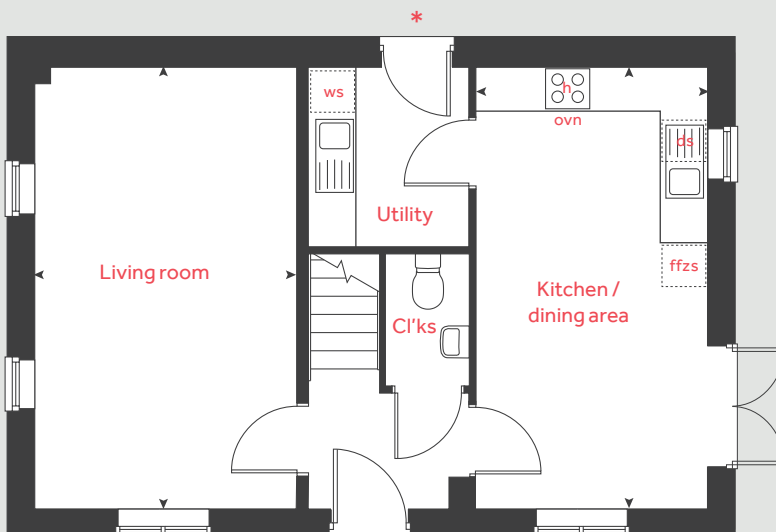
Bedroom 2
3.34m x 2.94m 10' 11" x 9' 8"

Bedroom 3
2.99m x 2.56m 9' 10" x 8' 5"

| | | | |
|------|----------------------|-------|-----------------------|
| h | hob | ws | washing machine space |
| ovn | oven | cup'd | cupboard |
| ffzs | fridge freezer space | < > | measuring points |
| ds | dishwasher space | | |

* Utility door applies to selected plots only.
Please see sales consultant for further details.

Ground floor



Please note, floorplans and dimensions are taken from architectural drawings and are for guidance only. Dimensions stated are within a tolerance of plus or minus 50mm. Overall dimensions are usually stated and there may be projections into these. With our continual improvement policy we constantly review our designs and specification to ensure we deliver the best products to our customers. Computer generated images not to scale. Finishes and materials may vary and landscaping is illustrative only. Kitchen layouts are indicative only and may change. To confirm specific details on our homes please see our sales consultant.

Produced by Vistry Group Design Studio.

When you have finished with this leaflet please recycle it.

130-HQUE2 DS06042 / 07.23

Linden
HOMES



The Elmslie

3 bedroom home

Green Oaks

Quedgeley, Gloucester GL2 2FY | **01452 404895**

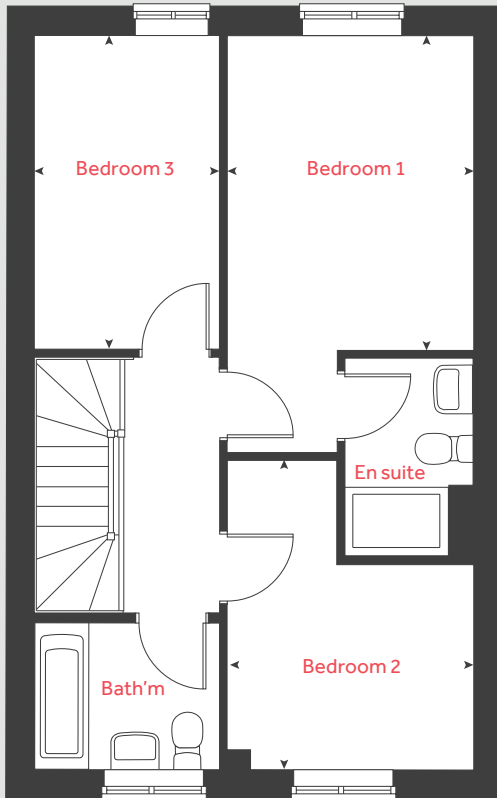
lindenhomes.co.uk

Linden
HOMES

The Elmslie

3 bedroom home

First floor



Ground floor

Kitchen / dining area

4.78m x 2.91m 15' 8" x 9' 6"

Living room

5.09m x 3.63m 16' 9" x 11' 11"

First floor

Bedroom 1

3.66m x 2.86m 12' 0" x 9' 4"

Bedroom 2

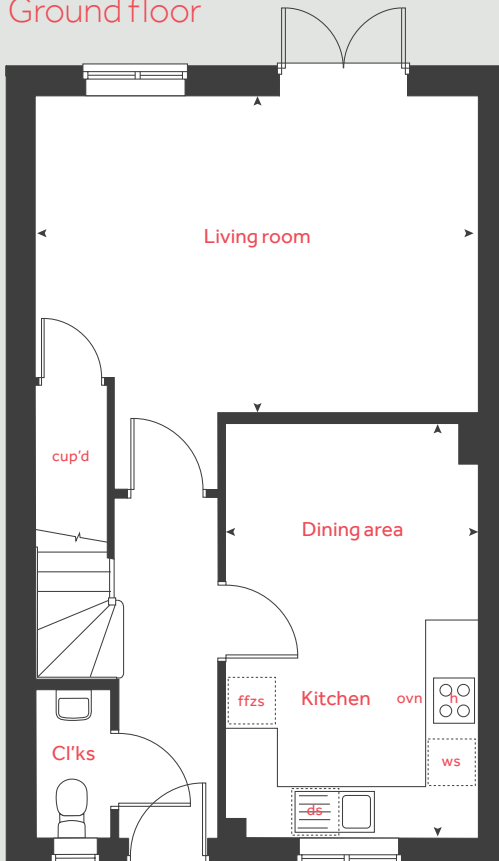
2.85m x 2.37m 9' 4" x 7' 9"

Bedroom 3

3.65m x 2.15m 12' 0" x 7' 1"

| | | | |
|------|----------------------|-------|-----------------------|
| h | hob | ws | washing machine space |
| ovn | oven | cup'd | cupboard |
| ffzs | fridge freezer space | ◀ ▶ | measuring points |
| ds | dishwasher space | | |

Ground floor



Please note, floorplans and dimensions are taken from architectural drawings and are for guidance only. Dimensions stated are within a tolerance of plus or minus 50mm. Overall dimensions are usually stated and there may be projections into these. With our continual improvement policy we constantly review our designs and specification to ensure we deliver the best products to our customers. Computer generated images not to scale. Finishes and materials may vary and landscaping is illustrative only. Kitchen layouts are indicative only and may change. To confirm specific details on our homes please see our sales consultant.

Produced by Vistry Group Design Studio.

When you have finished with this leaflet please recycle it.

130-HQUE2 DS06042 / 07.23

Linden

HOMES



The Alwin

3 bedroom home

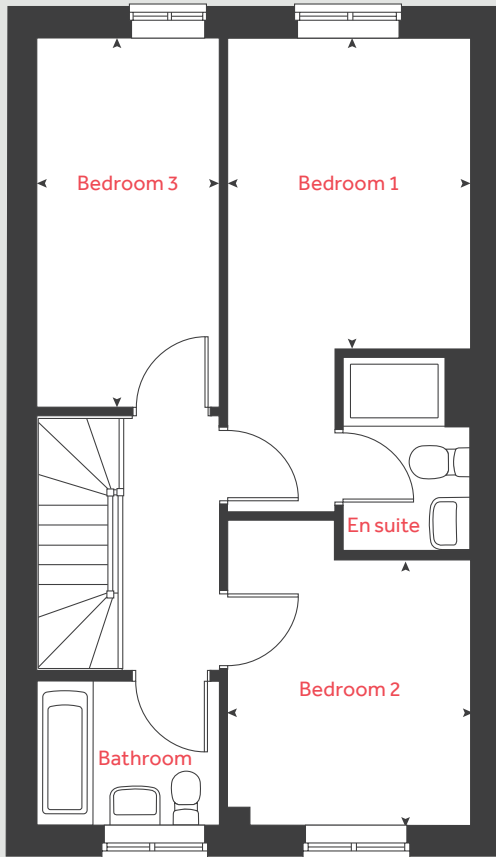
Green Oaks

Quedgeley, Gloucester GL2 2FY | **01452 404895**

lindenhomes.co.uk

Linden
HOMES

First floor



The Alwin

3 bedroom home

Ground floor

Kitchen / dining area
5.46m x 2.91m 19' 7" x 9' 7"

Living room
5.90m x 3.63m 19' 4" x 11' 11"

First floor

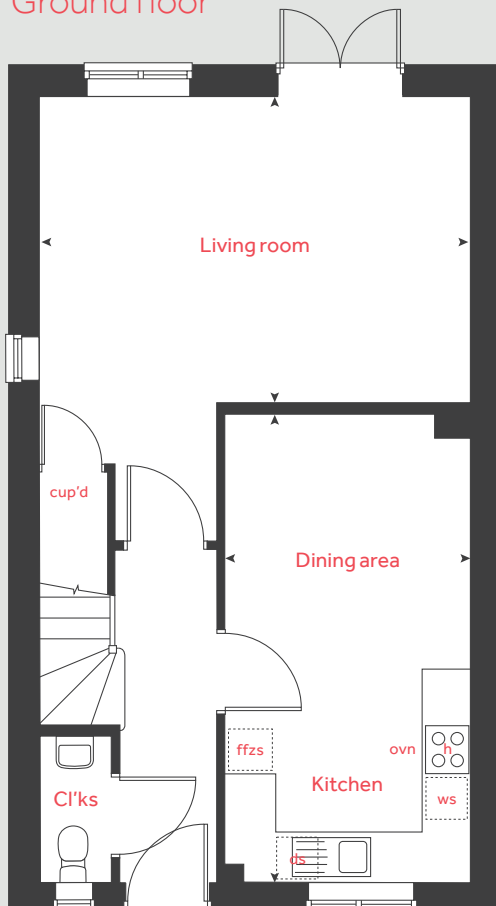
Bedroom 1
3.63m x 2.86m 11' 11" x 9' 4"

Bedroom 2
2.86m x 2.37m 9' 4" x 7' 9"

Bedroom 3
4.34m x 2.51m 14' 3" x 8' 3"

| | | | |
|------|----------------------|-------|-----------------------|
| h | hob | ws | washing machine space |
| ovn | oven | cup'd | cupboard |
| ffzs | fridge freezer space | ◀ ▶ | measuring points |
| ds | dishwasher space | | |

Ground floor



Please note, floorplans and dimensions are taken from architectural drawings and are for guidance only. Dimensions stated are within a tolerance of plus or minus 50mm. Overall dimensions are usually stated and there may be projections into these. With our continual improvement policy we constantly review our designs and specification to ensure we deliver the best products to our customers. Computer generated images not to scale. Finishes and materials may vary and landscaping is illustrative only. Kitchen layouts are indicative only and may change. To confirm specific details on our homes please see our sales consultant.

Produced by Vistry Group Design Studio.

When you have finished with this leaflet please recycle it.

130-HQUE2 DS06042 / 07.23

Linden HOMES



The Aldridge

4 bedroom home

Green Oaks

Quedgeley, Gloucester GL2 2FY | **01452 404895**

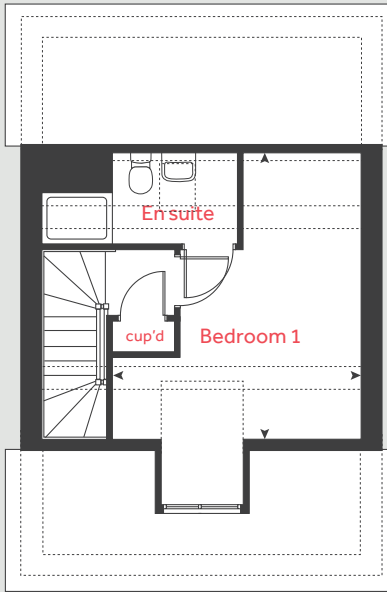
[lindenhomes.co.uk](https://www.lindenhomes.co.uk)

Linden
HOMES

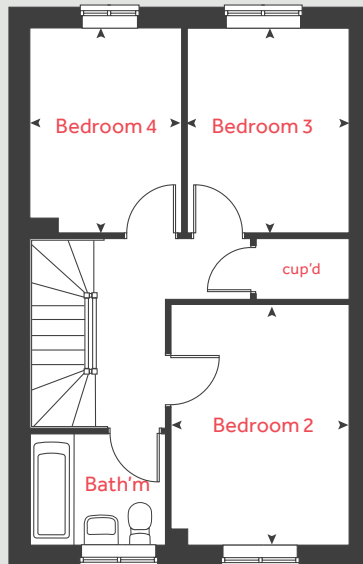
The Aldridge

4 bedroom home

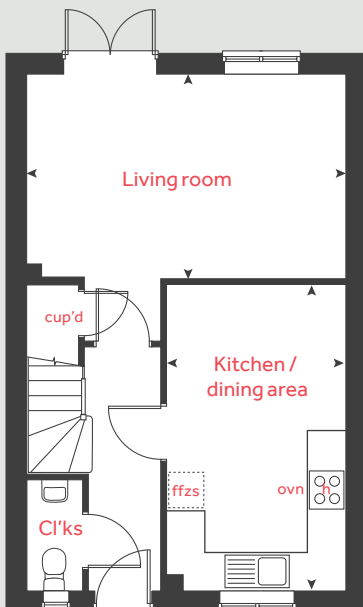
Second floor



First floor



Ground floor



Ground floor

Kitchen / dining area
4.78m x 2.80m 15' 8" x 9' 2"

Living room
4.98m x 3.19m 16' 4" x 10' 6"

First floor

Bedroom 2
3.74m x 2.77m 12' 3" x 9' 1"

Bedroom 3
3.19m x 2.52m 10' 6" x 8' 5"

Bedroom 4
3.19m x 2.36m 10' 6" x 7' 9"

Second floor

Bedroom 1
4.29m x 3.88m 14' 1" x 12' 9"

h hob cup'd cupboard
ovn oven < > measuring points
ffzs fridge freezer space

Please note, floorplans and dimensions are taken from architectural drawings and are for guidance only. Dimensions stated are within a tolerance of plus or minus 50mm. Overall dimensions are usually stated and there may be projections into these. With our continual improvement policy we constantly review our designs and specification to ensure we deliver the best products to our customers. Computer generated images not to scale. Finishes and materials may vary and landscaping is illustrative only. Kitchen layouts are indicative only and may change. To confirm specific details on our homes please see our sales consultant.

Produced by Vistry Group Design Studio.

When you have finished with this leaflet please recycle it.

130-HQUE2 DS06042 / 07.23

Linden
HOMES



The Foulston

4 bedroom home

Green Oaks

Quedgeley, Gloucester GL2 2FY | **01452 404895**

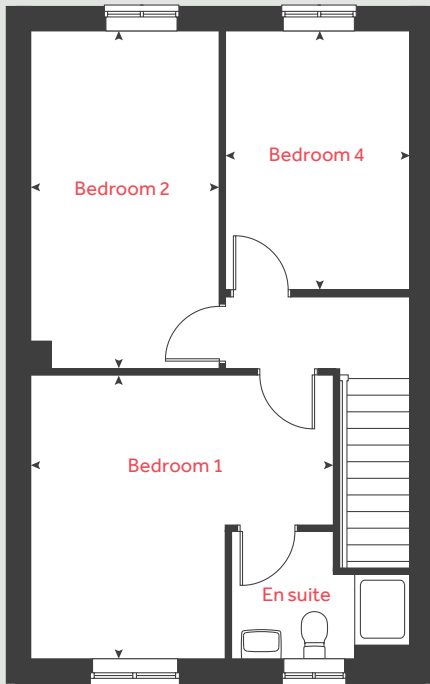
[lindenhomes.co.uk](https://www.lindenhomes.co.uk)

Linden
HOMES

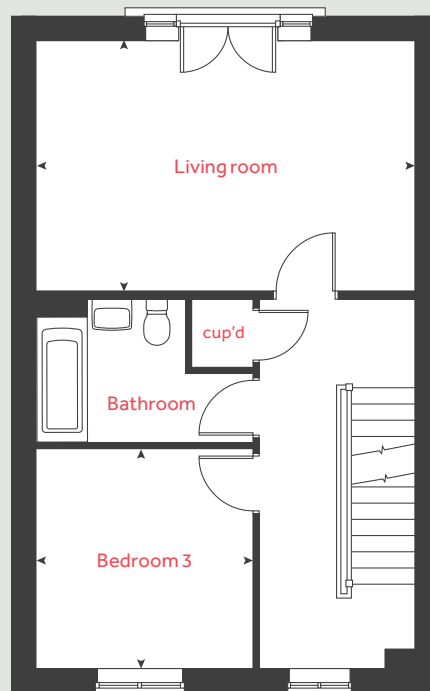
The Foulston

4 bedroom home

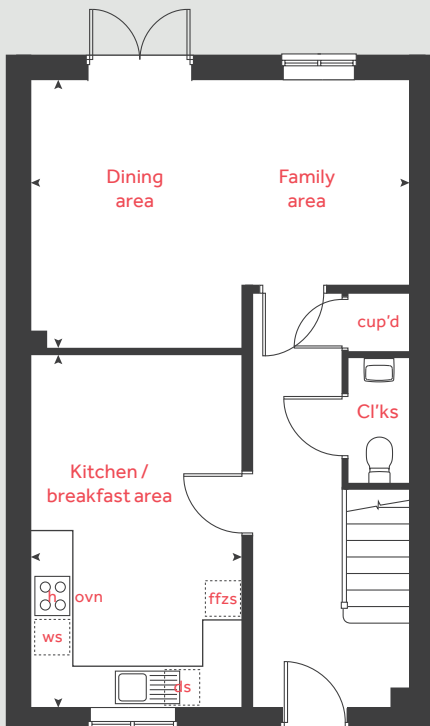
Second floor



First floor



Ground floor



Ground floor

Kitchen / breakfast area
4.98m x 3.01m 16' 4" x 9' 10"

Family / dining area
5.32m x 3.79m 17' 5" x 12' 5"

First floor

Living room
5.32m x 3.52m 17' 5" x 11' 7"

Bedroom 3
3.11m x 3.03m 10' 2" x 9' 11"

Second floor

Bedroom 1
4.22m x 4.02m 13' 10" x 13' 2"

Bedroom 2
4.72m x 2.62m 15' 6" x 8' 7"

Bedroom 4
3.62m x 2.62m 11' 10" x 8' 7"

| | | | |
|------|----------------------|-------|-----------------------|
| h | hob | ws | washing machine space |
| ovn | oven | cup'd | cupboard |
| ffzs | fridge freezer space | < > | measuring points |
| ds | dishwasher space | | |

Please note, floorplans and dimensions are taken from architectural drawings and are for guidance only. Dimensions stated are within a tolerance of plus or minus 50mm. Overall dimensions are usually stated and there may be projections into these. With our continual improvement policy we constantly review our designs and specification to ensure we deliver the best products to our customers. Computer generated images not to scale. Finishes and materials may vary and landscaping is illustrative only. Kitchen layouts are indicative only and may change. To confirm specific details on our homes please see our sales consultant.

Produced by Vistry Group Design Studio.

When you have finished with this leaflet please recycle it.

130-HQUE2 DS06042 / 07.23

Linden
HOMES



The Pembroke

4 bedroom home

Green Oaks

Quedgeley, Gloucester GL2 2FY | **01452 404895**

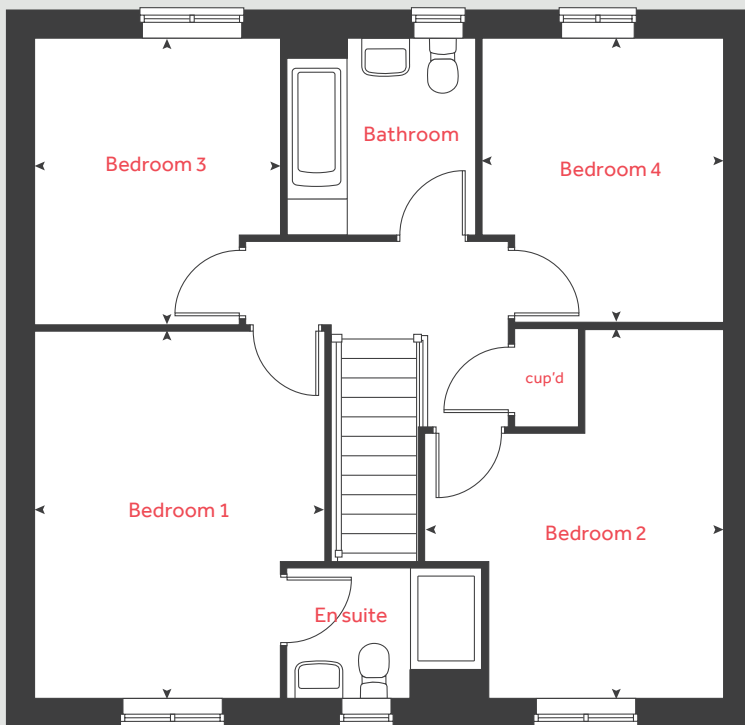
[lindenhomes.co.uk](https://www.lindenhomes.co.uk)

Linden
HOMES

The Pembroke

4 bedroom home

First floor



Ground floor

Kitchen / family / dining area
8.07m x 3.36m 26' 6" x 11' 0"

Living room
4.83m x 3.48m 15' 10" x 11' 5"

Study
2.40m x 2.35m 7' 11" x 7' 9"

First floor

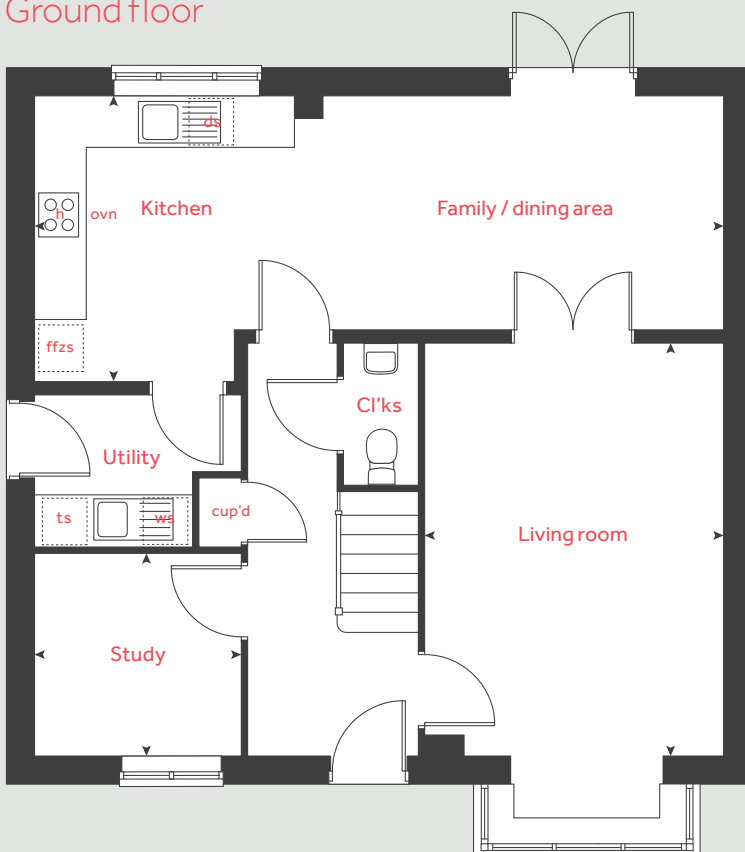
Bedroom 1
4.29m x 3.38m 14' 1" x 11' 1"

Bedroom 2
4.31m x 2.73m 14' 2" x 9' 0"

Bedroom 3
3.35m x 2.87m 11' 0" x 9' 5"

Bedroom 4
3.32m x 2.81m 10' 11" x 9' 3"

Ground floor



| | | | |
|-----|-----------------------|-------|----------------------|
| h | hob | ffzs | fridge freezer space |
| ovn | oven | ts | tumble dryer space |
| ws | washing machine space | cup'd | cupboard |
| ds | dishwasher space | ◀ ▶ | measuring points |

Please note, floorplans and dimensions are taken from architectural drawings and are for guidance only. Dimensions stated are within a tolerance of plus or minus 50mm. Overall dimensions are usually stated and there may be projections into these. With our continual improvement policy we constantly review our designs and specification to ensure we deliver the best products to our customers. Computer generated images not to scale. Finishes and materials may vary and landscaping is illustrative only. Kitchen layouts are indicative only and may change. To confirm specific details on our homes please see our sales consultant.

Produced by Vistry Group Design Studio.

When you have finished with this leaflet please recycle it.

130-HQUE2 DS06042 / 07.23

Linden

HOMES



The Knightley

4 bedroom home

Green Oaks

Quedgeley, Gloucester GL2 2FY | **01452 404895**

lindenhomes.co.uk

Linden
HOMES

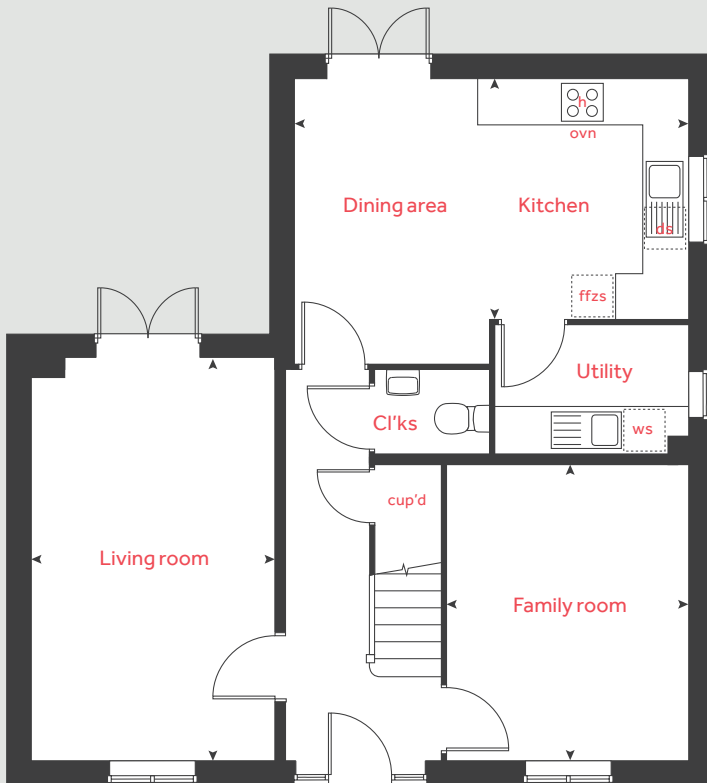
The Knightley

4 bedroom home

First floor



Ground floor



Ground floor

Kitchen / dining area
5.25m x 3.20m 17' 2" x 10' 5"

Living room
5.36m x 3.22m 17' 7" x 10' 7"

Family room
3.93m x 3.21m 12' 10" x 10' 5"

First floor

Bedroom 1
3.20m x 2.98m 10' 6" x 9' 10"

Bedroom 2
3.58m x 3.21m 10' 7" x 11' 9"

Bedroom 3
3.17m x 3.01m 10' 5" x 9' 11"

Bedroom 4
3.52m x 2.15m 11' 7" x 7' 1"

| | | | |
|------------|-----------------------|--------------|----------------------|
| h | hob | ffzs | fridge freezer space |
| ovn | oven | cup'd | cupboard |
| ws | washing machine space | ◀ ▶ | measuring points |
| ds | dishwasher space | | |

Please note, floorplans and dimensions are taken from architectural drawings and are for guidance only. Dimensions stated are within a tolerance of plus or minus 50mm. Overall dimensions are usually stated and there may be projections into these. With our continual improvement policy we constantly review our designs and specification to ensure we deliver the best products to our customers. Computer generated images not to scale. Finishes and materials may vary and landscaping is illustrative only. Kitchen layouts are indicative only and may change. To confirm specific details on our homes please see our sales consultant.

Produced by Vistry Group Design Studio.

When you have finished with this leaflet please recycle it.

130-HQUE2 DS06042 / 07.23

Linden
HOMES



The Harford

4 bedroom home

Green Oaks

Quedgeley, Gloucester GL2 2FY | **01452 404895**

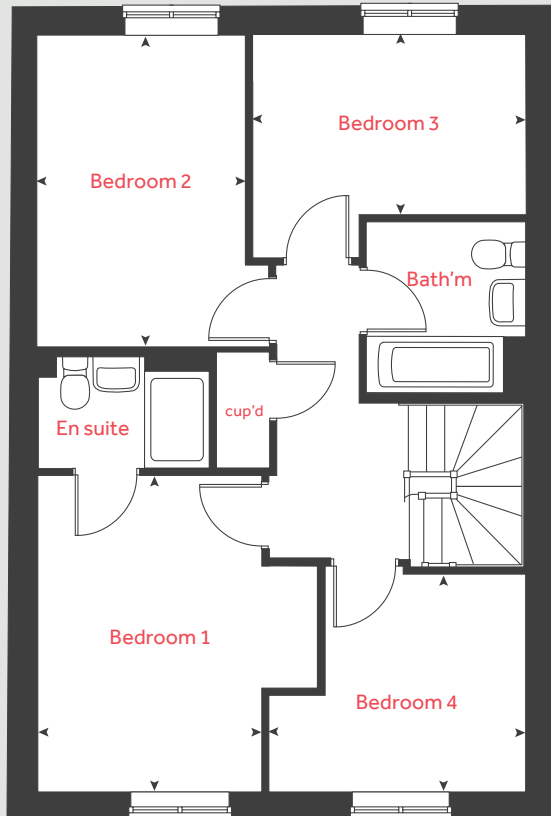
[lindenhomes.co.uk](https://www.lindenhomes.co.uk)

Linden
HOMES

The Harford

4 bedroom home

First floor



| Ground floor | metres | feet / inches |
|--------------------------------|-------------|------------------|
| Kitchen / dining / family area | 6.04 x 4.43 | 19' 10" x 14' 6" |
| Living room | 4.83 x 3.39 | 15' 10" x 11' 2" |

First floor

| | | |
|-----------|-------------|-----------------|
| Bedroom 1 | 3.93 x 2.76 | 12' 10" x 9' 0" |
| Bedroom 2 | 3.88 x 2.56 | 12' 8" x 8' 4" |
| Bedroom 3 | 3.38 x 2.24 | 11' 1" x 7' 4" |
| Bedroom 4 | 3.18 x 2.70 | 10' 5" x 8' 10" |

| | | | |
|------|----------------------|-------|-----------------------|
| h | hob | ws | washing machine space |
| ovn | oven | cup'd | cupboard |
| ffzs | fridge freezer space | < | > |
| ds | dishwasher space | | measuring points |

The Harford | Green Oaks, Quedgeley |

The floorplan has been produced for illustrative purposes only. Room sizes shown are between arrow points as indicated on plan. The dimensions have tolerances of + or -50mm and should not be used other than for general guidance. If specific dimensions are required, enquiries should be made to the sales consultant. The floor plans shown are not to scale. Measurements are based on the original drawings. Slight variations may occur during construction.

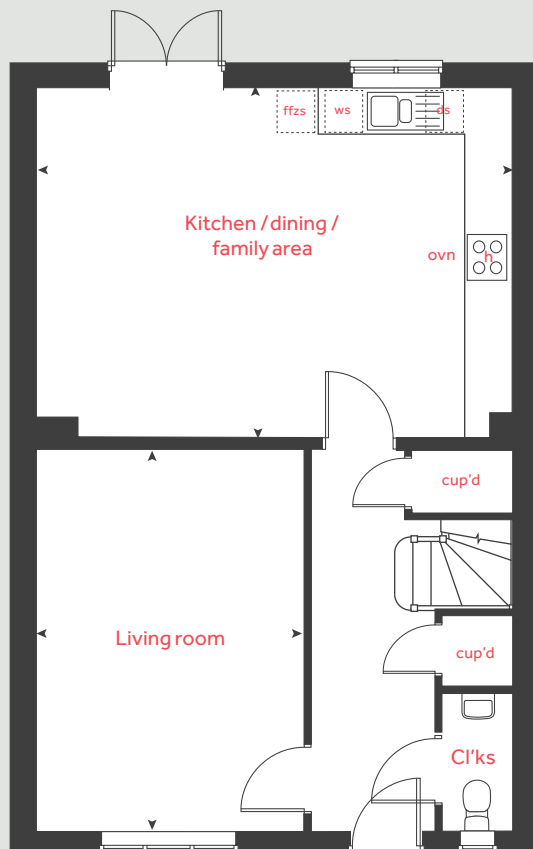
The illustrations shown are computer generated impressions of how the property may look and are indicative only. External details or finishes may vary on individual plots and homes may be built in either detached or attached styles depending on the development layout. Exact specifications, window styles and whether a property is left or right-handed may differ from plot to plot. Please speak to our sales consultant for specific plot details.

Produced by Vistry Group Design Studio.

When you have finished with this leaflet please recycle it.

130-HQUE2 DS08334 / 09.24

Ground floor



Linden

HOMES



The Leverton

4 bedroom home

Green Oaks

Quedgeley, Gloucester GL2 2FY | **01452 404895**

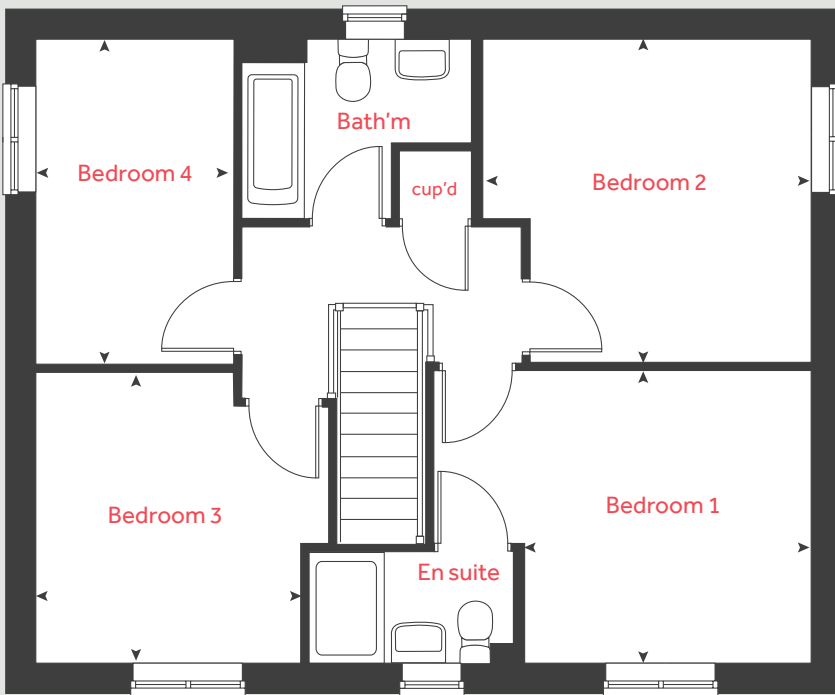
[lindenhomes.co.uk](https://www.lindenhomes.co.uk)

Linden
HOMES

The Leverton

4 bedroom home

First floor



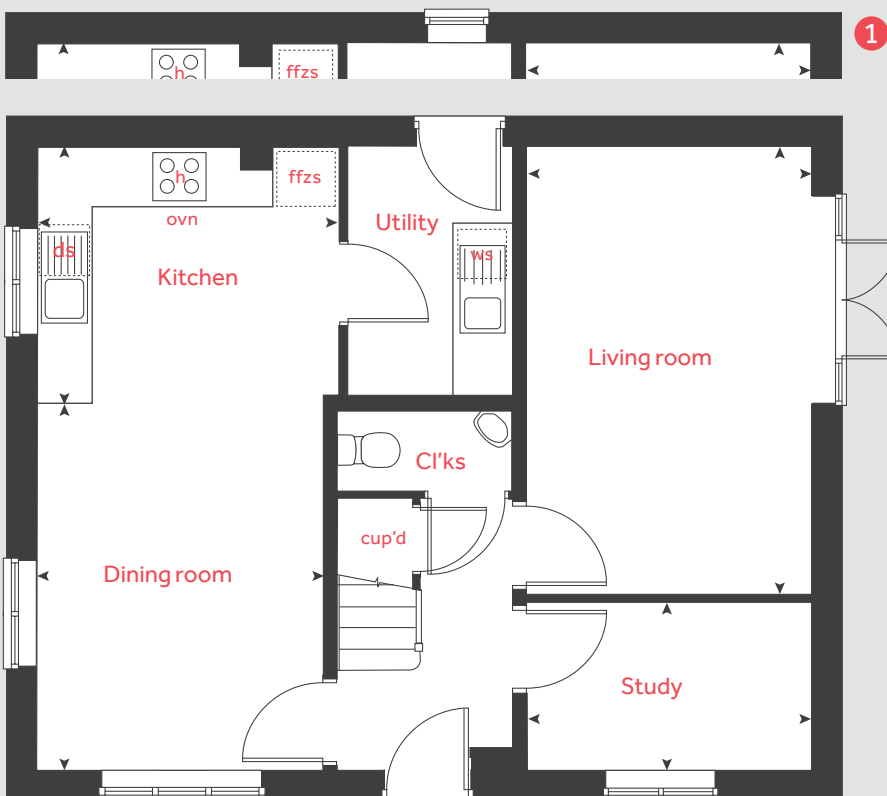
| Ground floor | metres | feet / inches |
|--------------|-------------|------------------|
| Kitchen | 3.28 x 2.78 | 10' 9" x 9' 2" |
| Living room | 4.81 x 3.08 | 15' 9" x 10' 2" |
| Dining area | 3.93 x 3.11 | 12' 11" x 10' 3" |
| Study | 3.08 x 1.81 | 10' 2" x 6' 0" |

First floor

| | | |
|-----------|-------------|-----------------|
| Bedroom 1 | 3.15 x 3.10 | 10' 4" x 10' 2" |
| Bedroom 2 | 3.52 x 3.47 | 11' 7" x 11' 5" |
| Bedroom 3 | 3.13 x 2.87 | 10' 3" x 9' 5" |
| Bedroom 4 | 3.49 x 2.15 | 11' 6" x 7' 1" |

| | | | |
|------|----------------------|-------|-----------------------|
| h | hob | ws | washing machine space |
| ovn | oven | cup'd | cupboard |
| ffzs | fridge freezer space | < > | measuring points |
| ds | dishwasher space | | |

Ground floor



The Leverton | Part L vt WQUED |

The floorplan has been produced for illustrative purposes only. Room sizes shown are between arrow points as indicated on plan. The dimensions have tolerances of + or -50mm and should not be used other than for general guidance. If specific dimensions are required, enquiries should be made to the sales consultant. The floor plans shown are not to scale. Measurements are based on the original drawings. Slight variations may occur during construction.

The illustrations shown are computer generated impressions of how the property may look and are indicative only. External details or finishes may vary on individual plots and homes may be built in either detached or attached styles depending on the development layout. Exact specifications, window styles and whether a property is left or right-handed may differ from plot to plot. Please speak to our sales consultant for specific plot details.

1 Alternative layout applies to selected plots only. Please see sales consultant for further details.

Produced by Vistry Group Design Studio.

When you have finished with this leaflet please recycle it.

130-HQUE2 DS12504 / 12.24

Linden
HOMES



3 bedroom Sage Home

Homes 34-38, 41 & 93



built
by

Linden
HOMES

3 bedroom Sage Home

Homes 34-38, 41
& 93

| Ground floor | metres | feet / inches |
|-----------------------|-------------|------------------|
| Kitchen / dining area | 4.78 x 2.91 | 15' 8" x 9' 6" |
| Living room | 5.09 x 3.63 | 16' 9" x 11' 11" |

First floor

| | | |
|-----------|-------------|----------------|
| Bedroom 1 | 3.66 x 2.86 | 12' 0" x 9' 4" |
| Bedroom 2 | 2.85 x 2.37 | 9' 4" x 7' 9" |
| Bedroom 3 | 3.65 x 2.15 | 12' 0" x 7' 1" |

| | | | |
|-----|-----------------------|-------|----------------------|
| ovn | oven | ffzs | fridge freezer space |
| h | hob | cup'd | cupboard |
| ds | dishwasher space | < > | measuring points |
| ws | washing machine space | | |

The floorplan has been produced for illustrative purposes only. Room sizes shown are between arrow points as indicated on plan. The dimensions have tolerances of + or -50mm and should not be used other than for general guidance. If specific dimensions are required, enquiries should be made to the sales consultant. The floor plans shown are not to scale. Measurements are based on the original drawings. Slight variations may occur during construction.

The illustrations shown are computer generated impressions of how the property may look and are indicative only. External details or finishes may vary on individual plots and homes may be built in either detached or attached styles depending on the development layout. Exact specifications, window styles and whether a property is left or right handed may differ from plot to plot. Please speak to our sales consultant for specific plot details.

Produced by the Vistry Group Design Studio.

When you have finished with this leaflet please recycle it.

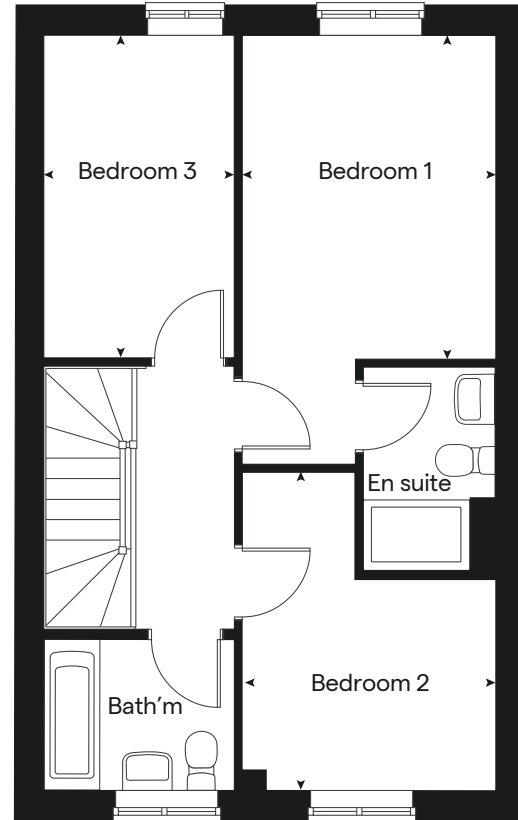
HQUE2 (Elmslie) DS09907 / 04.24



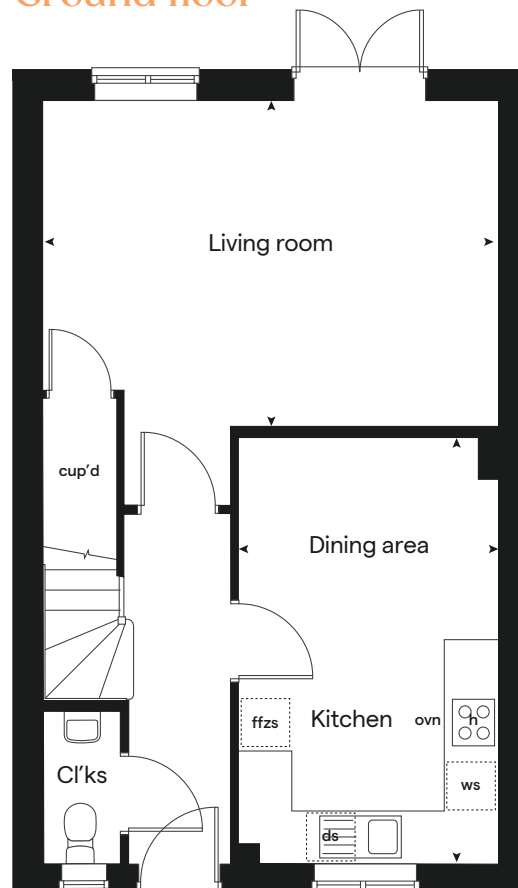
built by

Linden
HOMES

First floor



Ground floor





3 bedroom Sage Home

Homes 58, 59, 94, 113, 114, 116 & 117



Sage
Homes

built
by

Linden
HOMES

3 bedroom Sage Home

Homes 58, 59, 94,
113, 114, 116 & 117

| Ground floor | metres | feet / inches |
|-----------------------|-------------|------------------|
| Kitchen / dining area | 5.46 x 2.91 | 19' 7" x 9' 7" |
| Living room | 5.90 x 3.63 | 19' 4" x 11' 11" |

First floor

| | | |
|-----------|-------------|-----------------|
| Bedroom 1 | 3.63 x 2.86 | 11' 11" x 9' 4" |
| Bedroom 2 | 2.86 x 2.37 | 9' 4" x 7' 9" |
| Bedroom 3 | 4.34 x 2.51 | 14' 3" x 8' 3" |

| | | | |
|-----|-----------------------|-------|----------------------|
| ovn | oven | ffzs | fridge freezer space |
| h | hob | cup'd | cupboard |
| ds | dishwasher space | < > | measuring points |
| ws | washing machine space | | |

The floorplan has been produced for illustrative purposes only. Room sizes shown are between arrow points as indicated on plan. The dimensions have tolerances of + or -50mm and should not be used other than for general guidance. If specific dimensions are required, enquiries should be made to the sales consultant. The floor plans shown are not to scale. Measurements are based on the original drawings. Slight variations may occur during construction.

The illustrations shown are computer generated impressions of how the property may look and are indicative only. External details or finishes may vary on individual plots and homes may be built in either detached or attached styles depending on the development layout. Exact specifications, window styles and whether a property is left or right handed may differ from plot to plot. Please speak to our sales consultant for specific plot details.

Produced by the Vistry Group Design Studio.

When you have finished with this leaflet please recycle it.

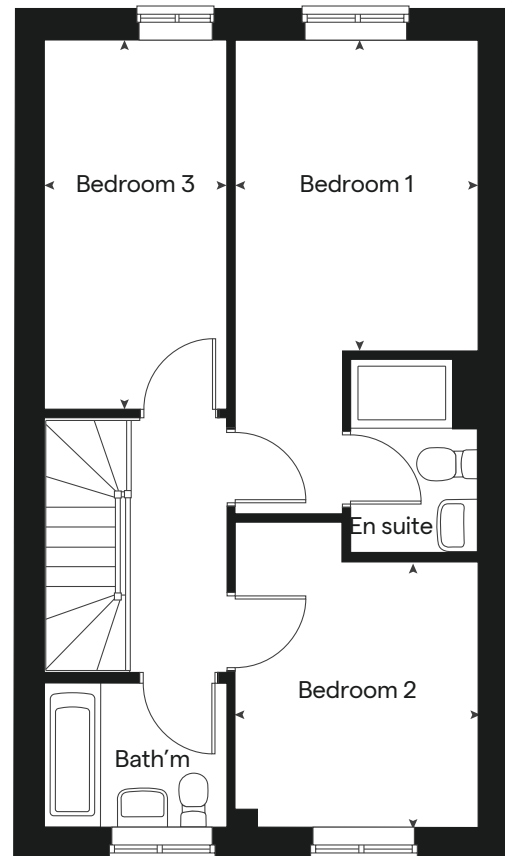
HQUE2 (Alwin) DS09907 / 04.24



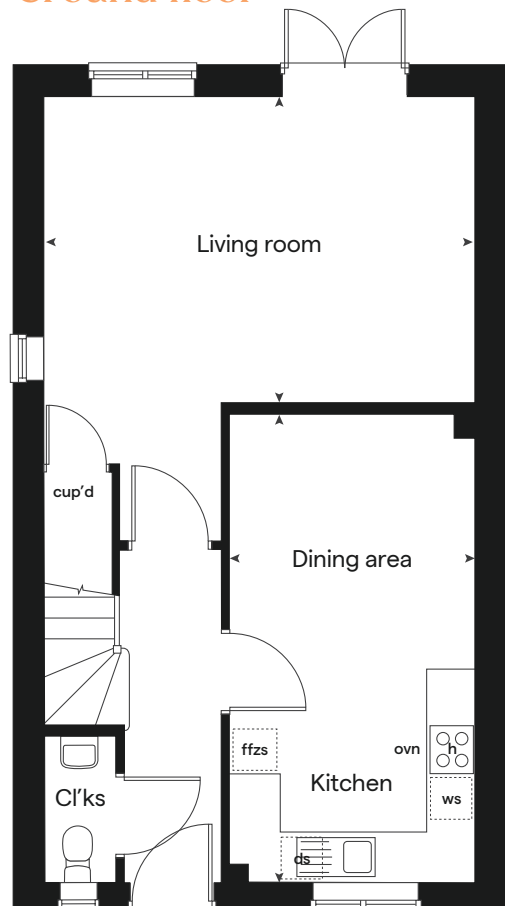
built by

Linden
HOMES

First floor



Ground floor





3 bedroom Sage Home

Homes 75, 81 & 108



Sage
Homes

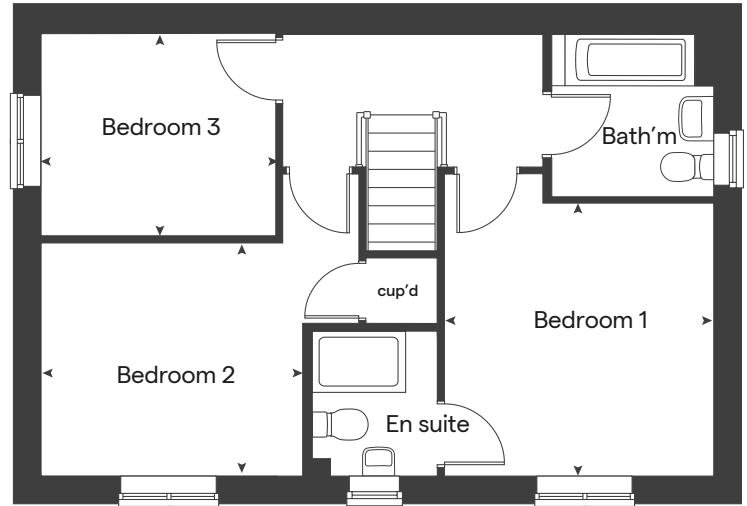
built
by

Linden
HOMES

3 bedroom Sage Home

Homes 75, 81
& 108

First floor



| Ground floor | metres | feet / inches |
|-----------------------|-------------|------------------|
| Kitchen / dining area | 5.46 x 2.91 | 19' 7" x 9' 7" |
| Living room | 5.90 x 3.63 | 19' 4" x 11' 11" |

| First floor | metres | feet / inches |
|-------------|-------------|-----------------|
| Bedroom 1 | 3.63 x 2.86 | 11' 11" x 9' 4" |
| Bedroom 2 | 2.86 x 2.37 | 9' 4" x 7' 9" |
| Bedroom 3 | 4.34 x 2.51 | 14' 3" x 8' 3" |

| | | | |
|-----|-----------------------|-------|----------------------|
| ovn | oven | ffzs | fridge freezer space |
| h | hob | cup'd | cupboard |
| ds | dishwasher space | < > | measuring points |
| ws | washing machine space | | |

The floorplan has been produced for illustrative purposes only. Room sizes shown are between arrow points as indicated on plan. The dimensions have tolerances of + or -50mm and should not be used other than for general guidance. If specific dimensions are required, enquiries should be made to the sales consultant. The floor plans shown are not to scale. Measurements are based on the original drawings. Slight variations may occur during construction.

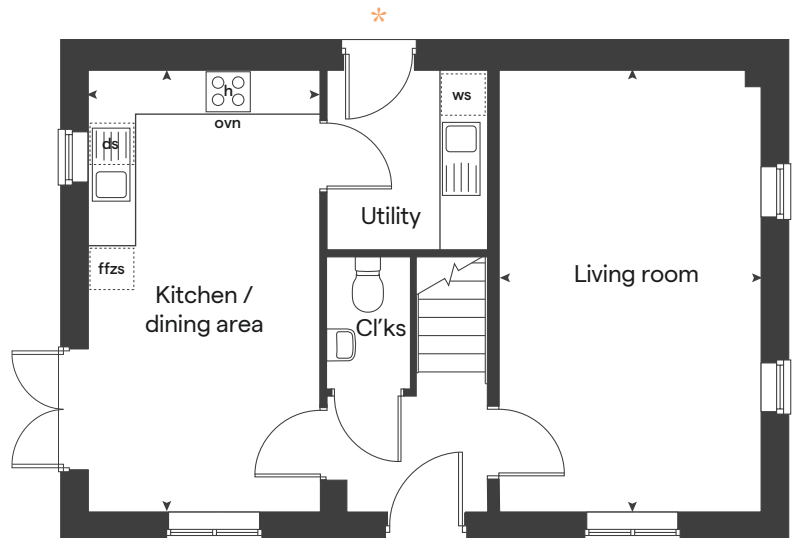
The illustrations shown are computer generated impressions of how the property may look and are indicative only. External details or finishes may vary on individual plots and homes may be built in either detached or attached styles depending on the development layout. Exact specifications, window styles and whether a property is left or right handed may differ from plot to plot. Please speak to our sales consultant for specific plot details.

* Utility door applies to selected plots only. Please see sales consultant for further details.

Produced by the Vistry Group Design Studio.

When you have finished with this leaflet please recycle it.
HQUE2 (Becket) DS09907 / 04.24

Ground floor



built by

Linden
HOMES



4 bedroom Sage Home

Homes 39, 40, 84, 85 & 95



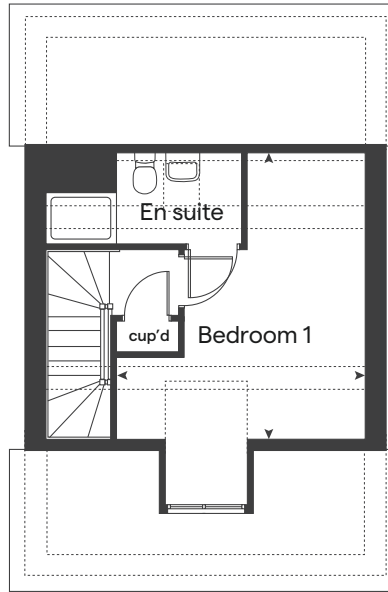
built
by

Linden
HOMES

4 bedroom Sage Home

Homes 39, 40, 84,
85 &, 95

Second floor



| Ground floor | metres | feet / inches |
|-----------------------|-------------|-----------------|
| Kitchen / dining area | 4.78 x 2.80 | 15' 8" x 10' 6" |
| Living room | 4.98 x 3.19 | 16' 4" x 10' 6" |

First floor

| | | |
|-----------|-------------|----------------|
| Bedroom 2 | 3.74 x 2.77 | 12' 3" x 9' 1" |
| Bedroom 3 | 3.19 x 2.52 | 10' 6" x 8' 5" |
| Bedroom 4 | 3.19 x 2.36 | 10' 6" x 7' 9" |

Second floor

| | | |
|-----------|-------------|-----------------|
| Bedroom 1 | 4.29 x 3.88 | 14' 1" x 12' 9" |
|-----------|-------------|-----------------|

| | | | |
|------|----------------------|-------|-----------------------|
| ovn | oven | ws | washing machine space |
| h | hob | cup'd | cupboard |
| ffzs | fridge freezer space | < > | measuring points |
| ds | dishwasher space | | |

The floorplan has been produced for illustrative purposes only. Room sizes shown are between arrow points as indicated on plan. The dimensions have tolerances of + or -50mm and should not be used other than for general guidance. If specific dimensions are required, enquiries should be made to the sales consultant.

The floor plans shown are not to scale. Measurements are based on the original drawings. Slight variations may occur during construction.

The illustrations shown are computer generated impressions of how the property may look and are indicative only. External details or finishes may vary on individual plots and homes may be built in either detached or attached styles depending on the development layout. Exact specifications, window styles and whether a property is left or right handed may differ from plot to plot. Please speak to our sales consultant for specific plot details.

Produced by the Vistry Group Design Studio.

When you have finished with this leaflet please recycle it.

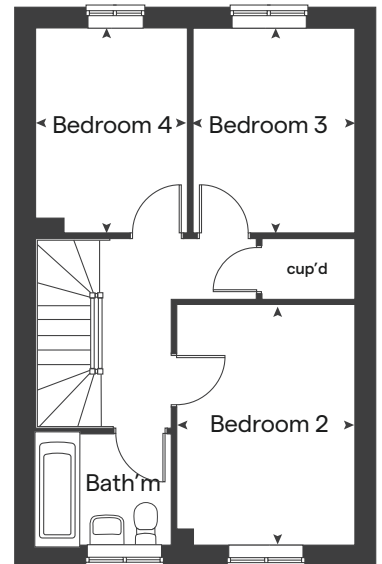
HQUE2 (Aldridge) DS09907 / 04.24



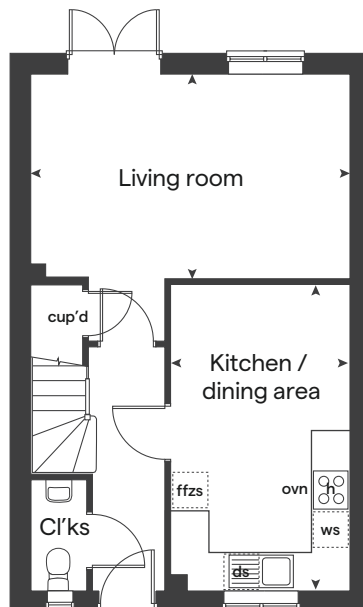
built by

Linden
HOMES

First floor



Ground floor





4 bedroom Sage Home

Home 74



built
by

Linden
HOMES

4 bedroom Sage Home

Home 74

| Ground floor | metres | feet / inches |
|--------------------------------|-------------|------------------|
| Kitchen / dining / family area | 6.04 x 4.43 | 19' 10" x 14' 6" |
| Living room | 4.83 x 3.39 | 15' 10" x 11' 2" |

| First floor | metres | feet / inches |
|-------------|-------------|-----------------|
| Bedroom 1 | 3.93 x 2.76 | 12' 10" x 9' 0" |
| Bedroom 2 | 3.88 x 2.56 | 12' 8" x 8' 4" |
| Bedroom 3 | 3.38 x 2.24 | 11' 1" x 7' 4" |
| Bedroom 4 | 3.18 x 2.70 | 10' 5" x 8' 10" |

| | | | |
|-----|-----------------------|-------|----------------------|
| ovn | oven | ffzs | fridge freezer space |
| h | hob | cup'd | cupboard |
| ds | dishwasher space | < > | measuring points |
| ws | washing machine space | | |

The floorplan has been produced for illustrative purposes only. Room sizes shown are between arrow points as indicated on plan. The dimensions have tolerances of + or -50mm and should not be used other than for general guidance. If specific dimensions are required, enquiries should be made to the sales consultant. The floor plans shown are not to scale. Measurements are based on the original drawings. Slight variations may occur during construction.

The illustrations shown are computer generated impressions of how the property may look and are indicative only. External details or finishes may vary on individual plots and homes may be built in either detached or attached styles depending on the development layout. Exact specifications, window styles and whether a property is left or right handed may differ from plot to plot. Please speak to our sales consultant for specific plot details.

Produced by the Vistry Group Design Studio.

When you have finished with this leaflet please recycle it.

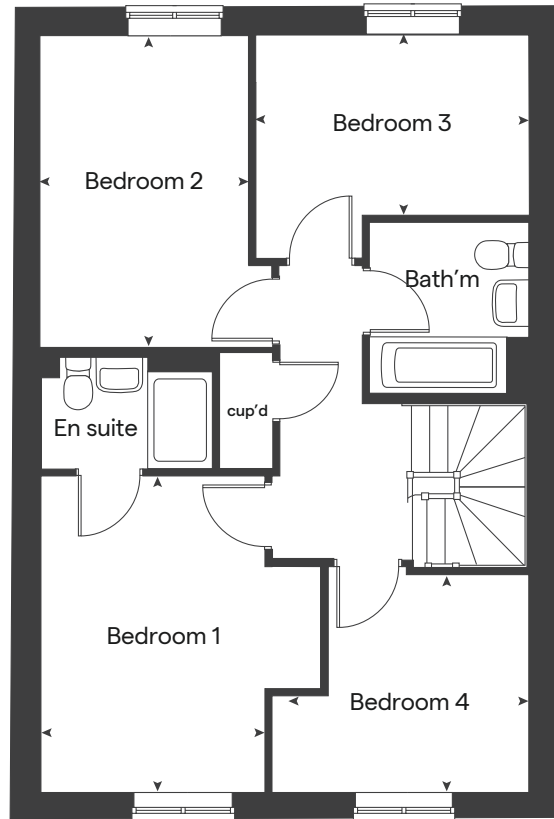
HQUE2 (Harford) DS09907 / 04.24



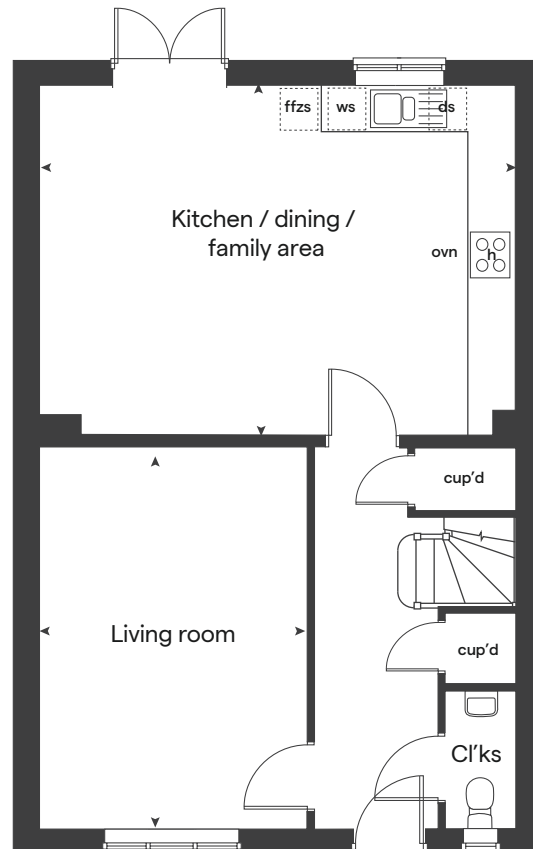
built by

Linden
HOMES

First floor



Ground floor



Green Oaks

Quedgeley

Use this guide to see what features are included in your new home. Your sales consultant will be happy to discuss the **Enhance** range of extras available.



| | 2 bedroom The Ashbee | 3 bedroom The Eimisle The Becket The Alwin | 4 bedroom The Harford The Aldridge The Leverton The Foulston The Pembroke The Knightley |
|--|-------------------------|---|---|
| Kitchen | | | |
| Symphony Konzept range kitchen with laminate worktop | ■ | ■ ■ ■ | ■ ■ ■ ■ ■ ■ |
| Stainless steel sink and drainer (single bowl) with chrome mixer tap | ■ | ■ ■ ■ | ■ ■ ■ ■ ■ ■ |
| Stainless steel sink and drainer (single bowl) with chrome mixer tap in utility | | ■ | ■ ■ ■ |
| Indesit hob (60cm) with Indesit built-in single under oven, with stainless steel splashback and integrated silver hood | ■ | ■ ■ ■ | |
| Indesit hob (60 cm) with built-in single under oven, with stainless steel splashback and 60cm stainless steel chimney hood | | | ■ ■ ■ ■ ■ ■ |
| White pendant light holder | ■ | ■ ■ ■ | ■ ■ ■ ■ ■ ■ |
| Fridge / freezer space | ■ | ■ ■ ■ | ■ ■ ■ ■ ■ ■ |
| Space for integrated dishwasher with plumbing and electrics | ■ | ■ ■ ■ | ■ ■ ■ ■ ■ ■ |
| Space for washing machine with plumbing and electrics in kitchen | ■ | ■ ■ ■ | ■ ■ ■ ■ ■ ■ |
| Space for washing machine with plumbing and electrics in utility | | ■ | ■ ■ ■ |
| Bathrooms and en suite(s) | | | |
| Ideal Standard contemporary white Tempo sanitary ware | ■ | ■ ■ ■ | ■ ■ ■ ■ ■ ■ |
| Ideal Standard close coupled WC to cloakroom | | ■ ■ ■ | ■ ■ ■ ■ ■ ■ |
| Ideal Standard low profile shower tray with glass enclosure in en suite | ■ | ■ ■ ■ | ■ ■ ■ ■ ■ ■ |
| Handheld hair wash attachment in bathroom | ■ | ■ ■ ■ | ■ ■ ■ ■ ■ ■ |
| Choice of standard Porcelanosa wall tiling (splashback, 450mm height over bath, and full-height to shower cubicle) | ■ | ■ ■ ■ | ■ ■ ■ ■ ■ ■ |
| White batten light holder | ■ | ■ ■ ■ | ■ ■ ■ ■ ■ ■ |
| Bedrooms | | | |
| Dressing area to bedroom 1 | | | ■ |

| | 2 bedroom The Ashbee | 3 bedroom The Eimisle The Becket The Alwin | 4 bedroom The Harford The Aldridge The Leverton The Foulston The Pembroke The Knightley |
|---|-------------------------|---|---|
| Doors and Windows | | | |
| Front door with multi-point security locking system and security chain | ■ | ■ ■ ■ | ■ ■ ■ ■ ■ ■ |
| PVCu double glazing to windows | ■ | ■ ■ ■ | ■ ■ ■ ■ ■ ■ |
| Double glazed PVCu French doors | | ■ ■ ■ | ■ ■ ■ ■ ■ ■ |
| Internal doors to be ladder door style pre-primed with Brass Satin finish handles | ■ | ■ ■ ■ | ■ ■ ■ ■ ■ ■ |
| Paving outside French / bi-fold door and path to garage personnel door (where applicable) | ■ | ■ ■ ■ | ■ ■ ■ ■ ■ ■ |
| General | | | |
| White painted walls and smooth white ceilings | ■ | ■ ■ ■ | ■ ■ ■ ■ ■ ■ |
| TV point to lounge and family room (where applicable) | ■ | ■ ■ ■ | ■ ■ ■ ■ ■ ■ |
| Master telephone socket to lounge and study where applicable | ■ | ■ ■ ■ | ■ ■ ■ ■ ■ ■ |
| Ideal combi-boiler with Honeywell heating control and room thermostat(s) | ■ | ■ ■ ■ | ■ ■ ■ ■ ■ ■ |
| Thermostatic valves to all radiators (with the exception of rooms with separate thermostat control) | ■ | ■ ■ ■ | ■ ■ ■ ■ ■ ■ |
| Contemporary lantern to front door and wiring only to the rear door | ■ | ■ ■ ■ | ■ ■ ■ ■ ■ ■ |
| Mains wired smoke detectors with battery back-up | ■ | ■ ■ ■ | ■ ■ ■ ■ ■ ■ |
| Battery powered Carbon Monoxide detector (wall mounted) to be provided for each floor | ■ | ■ ■ ■ | ■ ■ ■ ■ ■ ■ |
| Power and lighting to garage (where in curtilage of the plot) | ■ | ■ ■ ■ | ■ ■ ■ ■ ■ ■ |
| Enclosed fenced rear garden, and garden gate (where applicable) | ■ | ■ ■ ■ | ■ ■ ■ ■ ■ ■ |
| NHBC Buildmark cover | ■ | ■ ■ ■ | ■ ■ ■ ■ ■ ■ |
| First two years' customer service support from Linden Homes | ■ | ■ ■ ■ | ■ ■ ■ ■ ■ ■ |

■ Fitted as standard - included in the property
* Subject to stage of construction

Green Oaks

Quedgeley

Use this guide to see what features are included in your new home.



3 bedroom

Homes 34, 35, 36, 37, 38, 41 & 93

Homes 75, 81, 108

Homes 58, 59, 94, 113, 114, 116 & 117

4 bedroom

Home 74

Homes 39, 40, 84, 85 & 95

Kitchen

| | | | | | |
|--|---|---|---|---|---|
| Symphony Konzept range kitchen with laminate worktop | ■ | ■ | ■ | ■ | ■ |
| Stainless steel sink and drainer (single bowl) with chrome mixer tap | ■ | ■ | ■ | ■ | ■ |
| Stainless steel sink and drainer (single bowl) with chrome mixer tap in utility | | ■ | | | |
| Indesit hob (60cm) with Indesit built-in single under oven, with stainless steel splashback and integrated silver hood | ■ | ■ | ■ | | |
| Indesit hob (60 cm) with built-in single under oven, with stainless steel splashback and 60cm stainless steel chimney hood | | | | ■ | ■ |
| White pendant light holder | ■ | ■ | ■ | ■ | ■ |
| Fridge / freezer space | ■ | ■ | ■ | ■ | ■ |
| Space for integrated dishwasher with plumbing and electrics | ■ | ■ | ■ | ■ | ■ |
| Space for washing machine with plumbing and electrics in kitchen | ■ | | ■ | ■ | ■ |
| Space for washing machine with plumbing and electrics in utility | | ■ | | | |

Bathrooms and en suite(s)

| | | | | | |
|--|---|---|---|---|---|
| Ideal Standard contemporary white Tempo sanitary ware | ■ | ■ | ■ | ■ | ■ |
| Ideal Standard close coupled WC to cloakroom | ■ | ■ | ■ | ■ | ■ |
| Ideal Standard low profile shower tray with glass enclosure in en suite | ■ | ■ | ■ | ■ | ■ |
| Handheld hair wash attachment in bathroom | ■ | ■ | ■ | ■ | ■ |
| Choice of standard Porcelanosa wall tiling (splashback, 450mm height over bath, and full-height to shower cubicle) | ■ | ■ | ■ | ■ | ■ |
| White batten light holder | ■ | ■ | ■ | ■ | ■ |

■ Fitted as standard - included in the property
* Subject to stage of construction

3 bedroom

Homes 34, 35, 36, 37, 38, 41 & 93

Homes 75, 81, 108

Homes 58, 59, 94, 113, 114, 116 & 117

4 bedroom

Home 74

Homes 39, 40, 84, 85 & 95

Doors and Windows

| | | | | | |
|---|---|---|---|---|---|
| Front door with multi-point security locking system and security chain | ■ | ■ | ■ | ■ | ■ |
| PVCu double glazing to windows | ■ | ■ | ■ | ■ | ■ |
| Double glazed PVCu French doors | ■ | ■ | ■ | ■ | ■ |
| Internal doors to be ladder door style pre-primed with Brass Satin finish handles | ■ | ■ | ■ | ■ | ■ |
| Paving outside French doors (where applicable) | ■ | ■ | ■ | ■ | ■ |

General

| | | | | | |
|---|---|---|---|---|---|
| White painted walls and smooth white ceilings | ■ | ■ | ■ | ■ | ■ |
| TV point to lounge and family room (where applicable) | ■ | ■ | ■ | ■ | ■ |
| Master telephone socket to lounge and study where applicable | ■ | ■ | ■ | ■ | ■ |
| Ideal combi-boiler with Honeywell heating control and room thermostat(s) | ■ | ■ | ■ | ■ | ■ |
| Thermostatic valves to all radiators (with the exception of rooms with separate thermostat control) | ■ | ■ | ■ | ■ | ■ |
| Contemporary lantern to front door and wiring only to the rear door | ■ | ■ | ■ | ■ | ■ |
| Mains wired smoke detectors with battery back-up | ■ | ■ | ■ | ■ | ■ |
| Battery powered Carbon Monoxide detector (wall mounted) to be provided for each floor | ■ | ■ | ■ | ■ | ■ |
| Power and lighting to garage (where in curtilage of the plot) | ■ | ■ | ■ | ■ | ■ |
| Enclosed fenced rear garden, and garden gate (where applicable) | ■ | ■ | ■ | ■ | ■ |
| EV charging points | ■ | ■ | ■ | ■ | ■ |
| NHBC Buildmark cover | ■ | ■ | ■ | ■ | ■ |
| First two years' customer service support from Linden Homes | ■ | ■ | ■ | ■ | ■ |