

Pleasley View

Shirebrook



Linden
HOMES



Pleasley View Shirebrook

A collection of 2, 3 & 4 bedroom homes located in the historic county of Derbyshire.

Situated on the edge of the town of Shirebrook, surrounded by green open space, our range of energy-efficient new homes are designed for modern family living.

In an area steeped in history, waiting to be explored is close-by Bolsover Castle and Hardwick Hall. For family days out, Sherwood Forest and Clumber Park National Trust offer a wide range of activities, plus The Peak District can be reached in under 40 minutes for all outdoor pursuits.

The town of Shirebrook itself still offers a traditional weekly market in the square as well as a great selection of amenities with a choice of supermarkets, post offices, pubs, pharmacies and eateries. Parents will also be pleased to find schools suitable for all ages.

Conveniently located, Pleasley View is accessible by both road and rail making it a great place to put down roots. Shirebrook train station is a mere 5-minute drive from the development offering regular services to Nottingham, Worksop and Mansfield. By road, the M1 is close-by for travel further afield.

Pleasley View

Shirebrook NG20 8FY | 01623 306 796

lindenhomes.co.uk

Linden
HOMES

Development layout



4 bedroom home

- The Mylne
- The Goodridge
- The Aslin
- The Burnet

3 bedroom home

- The Brook
- The Emmett
- The Eveleigh
- The Mountford
- The Vale
- The Wyatt
- The Wyatt II
- The Robin
- The Coatham

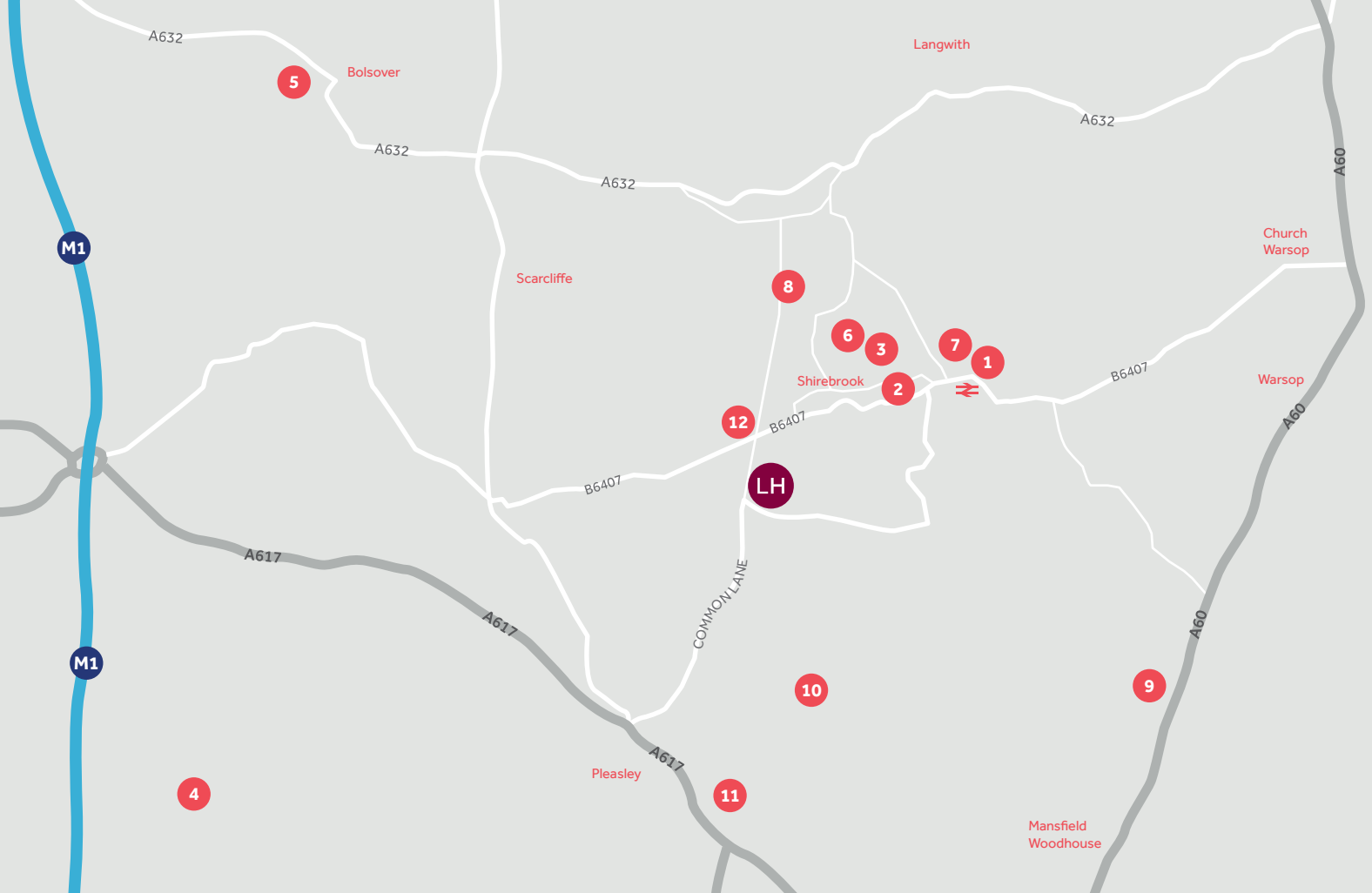
2 bedroom home

- The Harcourt
- The Harcourt II
- The Atkins

Affordable homes

- bc bin collection point
- ss sub station
- ▶ garage entrance
- v visitor parking space

This plan has been produced for home identification purposes only and is not to scale. The development layout, landscaping and tenure of all dwellings may be subject to change throughout the course of the development. Finishes and materials may vary from those shown on the plan. Please check the details of your chosen plot and house type with the sales consultant. Development layout plan correct at time of production.



Around the local neighbourhood

- | | | |
|-----------------------------------|------------------------------------|-------------------------------------------------|
| 1 Shirebrook Train station | 5 Bolsover Castle | 9 Mansfield Woodhouse Golf Club |
| 2 Shirebrook Market | 6 Shirebrook Leisure Centre | 10 Pleasley Vale Outdoor Activity Centre |
| 3 Aldi Supermarket | 7 Willow Tree Family Farm | 11 Radford & Hymas Academy |
| 4 Hardwick Hall | 8 Shirebrook Academy | 12 Old Orchard Nursery Garden Centre |

Distances shown are by road (Source: Google). Fastest journey times are shown (Source: National Rail Enquiries).



The Harcourt 2 bedroom home

Pleasley View

Shirebrook, NG20 8FY | 01623 306 796

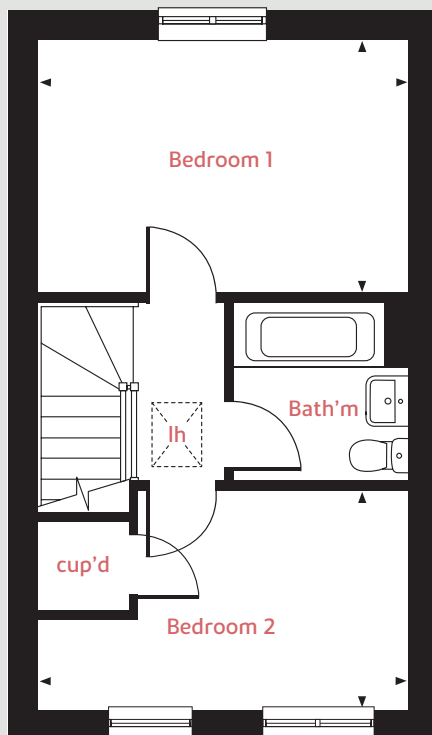
lindenhomes.co.uk

Linden
HOMES

The Harcourt

2 bedroom home

First Floor



Ground floor

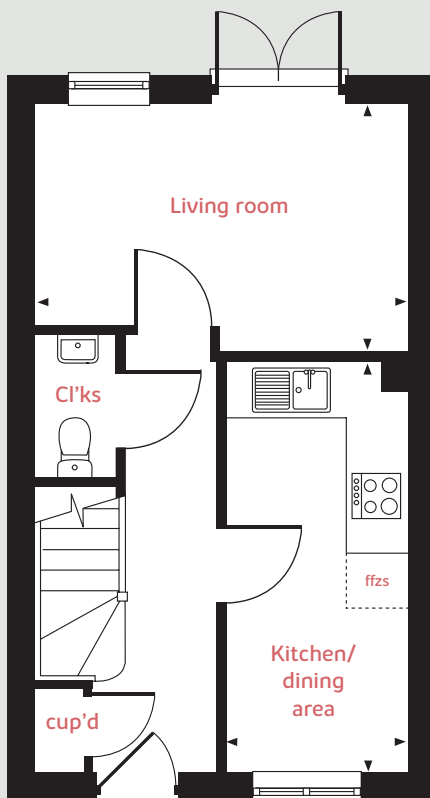
Living room	4.08m x 2.75m	13'4" x 9'0"
Kitchen / dining area	4.56m x 2.00m	14'11" x 6'7"

First floor

Bedroom 1	4.08m x 2.84m	13'4" x 9'4"
Bedroom 2	4.08m x 2.41m	13'4" x 7'11"

lh	loft hatch	ffzs	fridge freezer space
cup'd	cupboard	◀ ▶	measuring points

Ground Floor



The illustrations shown are computer generated impressions of how the property may look and are indicative only. External details or finishes may vary on individual plots and homes may be built in either detached or attached styles depending on the development layout. Exact specifications, window styles and whether a property is left or righthanded may differ from plot to plot. Please speak to our sales consultant for specific plot details.

The floorplan has been produced for illustrative purposes only. Room sizes shown are between arrow points as indicated on plan. The dimensions have tolerances of + or -50mm and should not be used other than for general guidance. If specific dimensions are required, enquiries should be made to the sales consultant. The floor plans shown are not to scale. Measurements are based on the original drawings. Slight variations may occur during construction.

Linden
HOMES



The Harcourt II 2 bedroom home

Pleasley View

Shirebrook, NG20 8FY | **01623 306 796**

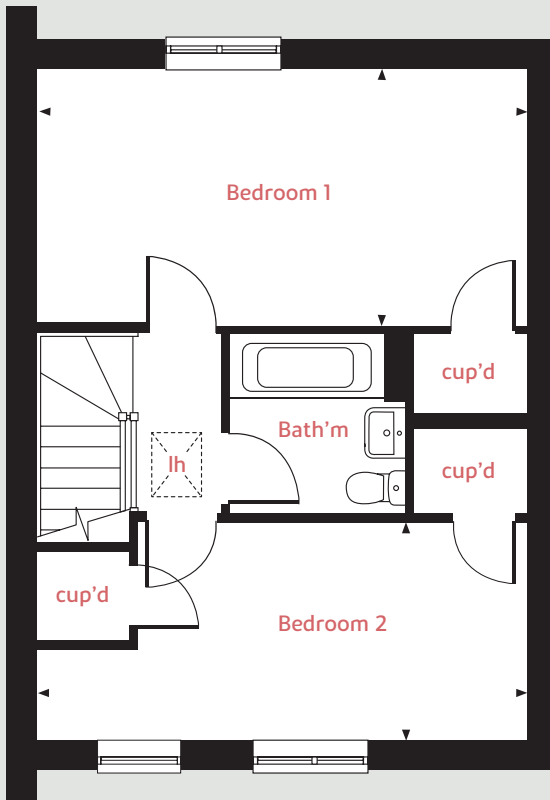
[lindenhomes.co.uk](https://www.lindenhomes.co.uk)

Linden
HOMES

The Harcourt II

2 bedroom home

First Floor



Ground floor

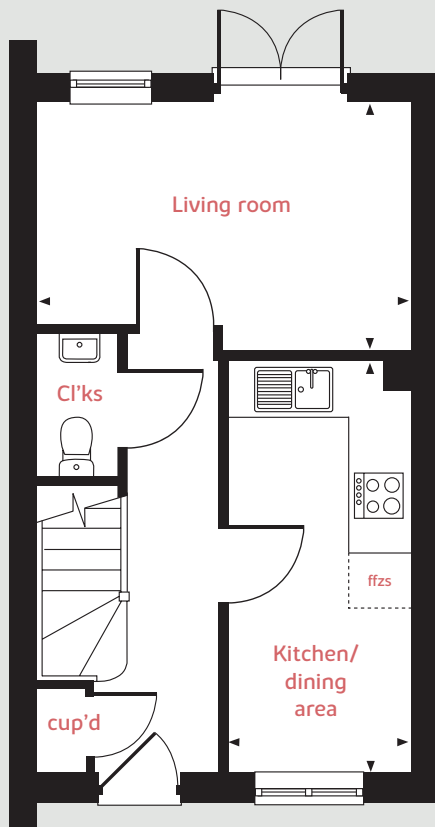
Living room	4.08m x 2.73m	13'4" x 8'11"
Kitchen / dining area	4.56m x 2.00m	14'11" x 6'7"

First floor

Bedroom 1	5.43m x 2.82m	17'9" x 9'3"
Bedroom 2	5.43m x 2.40m	17'9" x 7'10"

lh	loft hatch	ffzs	fridge freezer space
cup'd	cupboard	◀ ▶	measuring points

Ground Floor



The illustrations shown are computer generated impressions of how the property may look and are indicative only. External details or finishes may vary on individual plots and homes may be built in either detached or attached styles depending on the development layout. Exact specifications, window styles and whether a property is left or righthanded may differ from plot to plot. Please speak to our sales consultant for specific plot details.

The floorplan has been produced for illustrative purposes only. Room sizes shown are between arrow points as indicated on plan. The dimensions have tolerances of + or -50mm and should not be used other than for general guidance. If specific dimensions are required, enquiries should be made to the sales consultant. The floor plans shown are not to scale. Measurements are based on the original drawings. Slight variations may occur during construction.

Linden
HOMES



The Atkins 2 bedroom home

Pleasley View

Shirebrook, NG20 8FY | **01623 306 796**

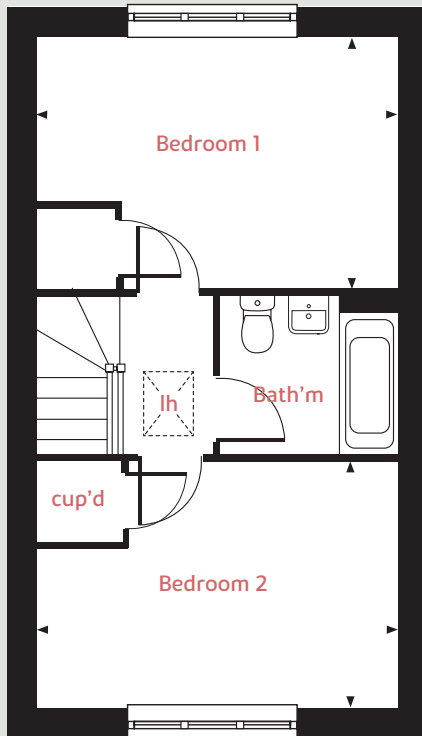
lindenhomes.co.uk

Linden
HOMES

The Atkins

2 bedroom home

First Floor



Ground floor

Living room

4.42m x 2.75m 14'6" x 9'0"

Kitchen / dining room

5.34m x 2.27m 17'6" x 7'5"

First Floor

Bedroom 1

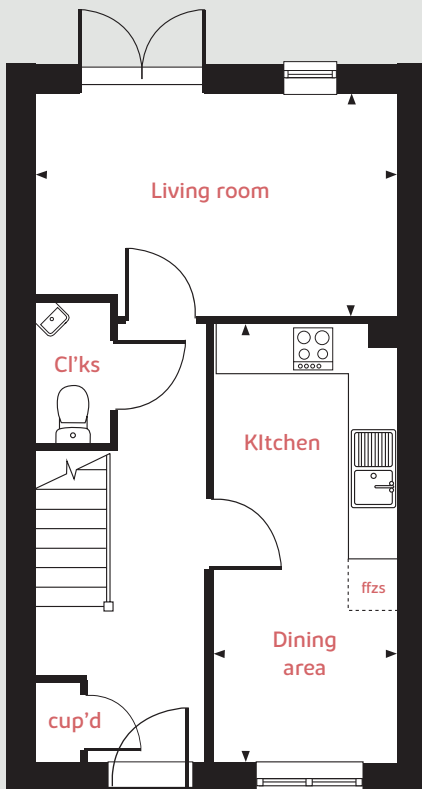
4.42m x 3.08m 14'6" x 10'1"

Bedroom 2

4.42m x 3.02m 14'6" x 9'10"

lh	loft hatch	ffzs	fridge freezer space
cup'd	cupboard	◀ ▶	measuring points

Ground Floor



The illustrations shown are computer generated impressions of how the property may look and are indicative only. External details or finishes may vary on individual plots and homes may be built in either detached or attached styles depending on the development layout. Exact specifications, window styles and whether a property is left or righthanded may differ from plot to plot. Please speak to our sales consultant for specific plot details.

The floorplan has been produced for illustrative purposes only. Room sizes shown are between arrow points as indicated on plan. The dimensions have tolerances of + or -50mm and should not be used other than for general guidance. If specific dimensions are required, enquiries should be made to the sales consultant. The floor plans shown are not to scale. Measurements are based on the original drawings. Slight variations may occur during construction.

Linden
HOMES



The Wyatt 3 bedroom home

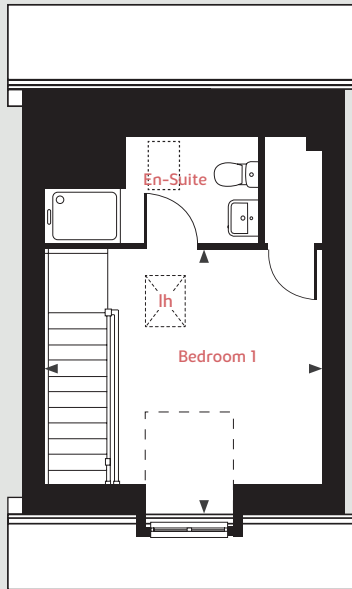
Pleasley View

Shirebrook, NG20 8FY | **01623 306 796**

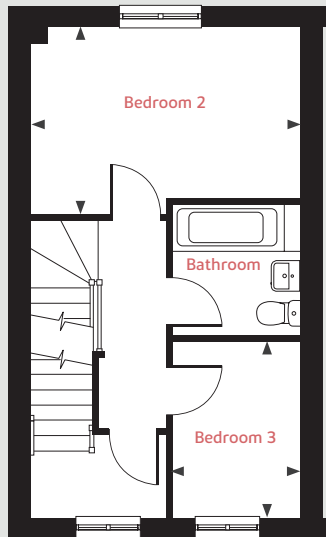
lindenhomes.co.uk

Linden
HOMES

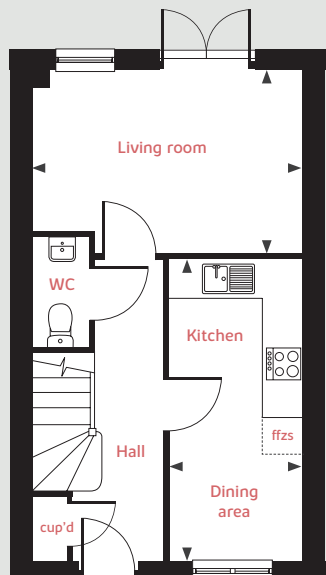
Second Floor



First Floor



Ground Floor



The Wyatt

3 bedroom home

Ground floor

Living room

4.10m x 2.77m

13'5" x 9'1"

Kitchen/dining area

4.60m x 2.04m

15'1" x 6'8"

First Floor

Bedroom 2

4.10m x 2.61m

13'5" x 8'6"

Bedroom 3

2.69m x 1.97m

8'9" x 6'5"

Second Floor

Bedroom 1

3.42m x 3.02m

11'3" x 9'11"

lh	loft hatch	ffzs	fridge freezer space
cup'd	cupboard	◀ ▶	measuring points

The illustrations shown are computer generated impressions of how the property may look and are indicative only. External details or finishes may vary on individual plots and homes may be built in either detached or attached styles depending on the development layout. Exact specifications, window styles and whether a property is left or righthanded may differ from plot to plot. Please speak to our sales consultant for specific plot details.

The floorplan has been produced for illustrative purposes only. Room sizes shown are between arrow points as indicated on plan. The dimensions have tolerances of + or -50mm and should not be used other than for general guidance. If specific dimensions are required, enquiries should be made to the sales consultant. The floor plans shown are not to scale. Measurements are based on the original drawings. Slight variations may occur during construction.

Linden

HOMES



The Wyatt II 3 bedroom home

Pleasley View

Shirebrook, NG20 8FY | **01623 306 796**

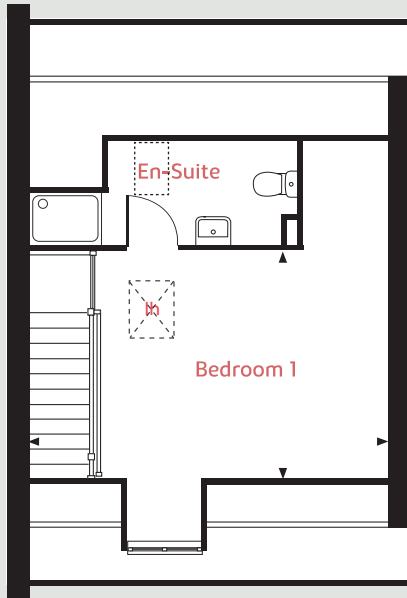
lindenhomes.co.uk

Linden
HOMES

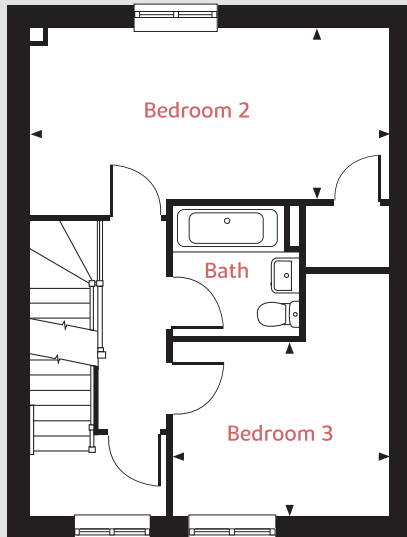
The Wyatt II

3 bedroom home

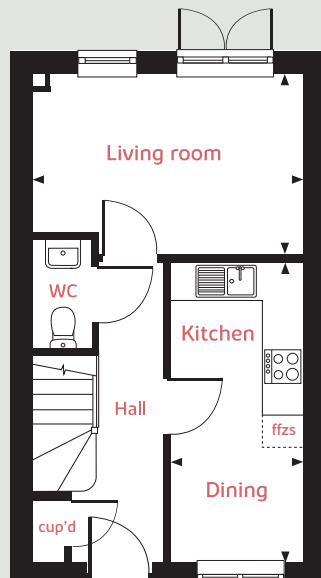
Second floor



First floor



Ground floor



Ground floor

Kitchen / dining area
4.60m x 2.04m 15'1" x 6'8"

Living room
4.10m x 2.77m 13'5" x 9'1"

First floor

Bedroom 2
5.46m x 2.61m 17'10" x 8'6"

Bedroom 3
3.30m x 2.69m 10'9" x 8'9"

Second floor

Bedroom 1
4.48m x 3.46m 14'8" x 11'4"

lh	loft hatch	ffzs	fridge freezer space
cup'd	cupboard	◀ ▶	measuring points

The illustrations shown are computer generated impressions of how the property may look and are indicative only. External details or finishes may vary on individual plots and homes may be built in either detached or attached styles depending on the development layout. Exact specifications, window styles and whether a property is left or righthanded may differ from plot to plot. Please speak to our sales consultant for specific plot details.

The floorplan has been produced for illustrative purposes only. Room sizes shown are between arrow points as indicated on plan. The dimensions have tolerances of + or -50mm and should not be used other than for general guidance. If specific dimensions are required, enquiries should be made to the sales consultant. The floor plans shown are not to scale. Measurements are based on the original drawings. Slight variations may occur during construction.

Linden HOMES



The Emmett 3 bedroom home

Pleasley View

Shirebrook, NG20 8FY | **01623 306 796**

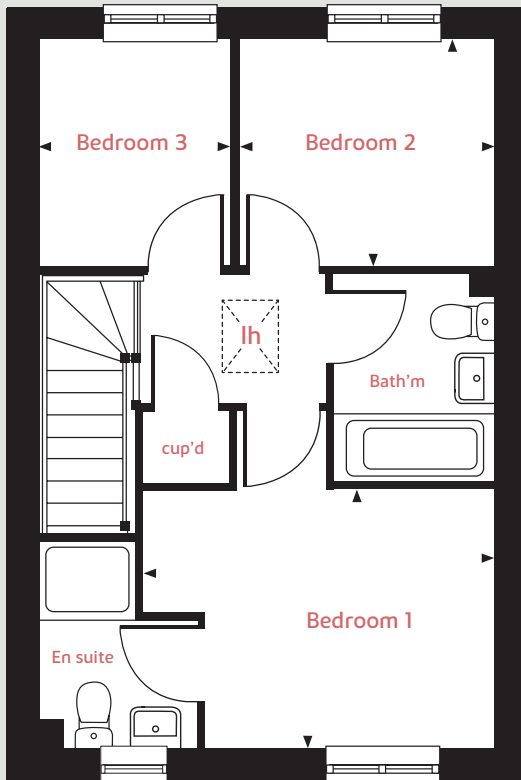
[lindenhomes.co.uk](https://www.lindenhomes.co.uk)

Linden
HOMES

The Emmett

3 bedroom home

First Floor



Ground floor

Kitchen / dining room

4.75m x 2.96m 15' 7" x 9' 8"

Living room

4.34m x 3.77m 14' 2" x 12' 4"

First Floor

Bedroom 1

3.67m x 2.68m 12' 0" x 8' 9"

Bedroom 2

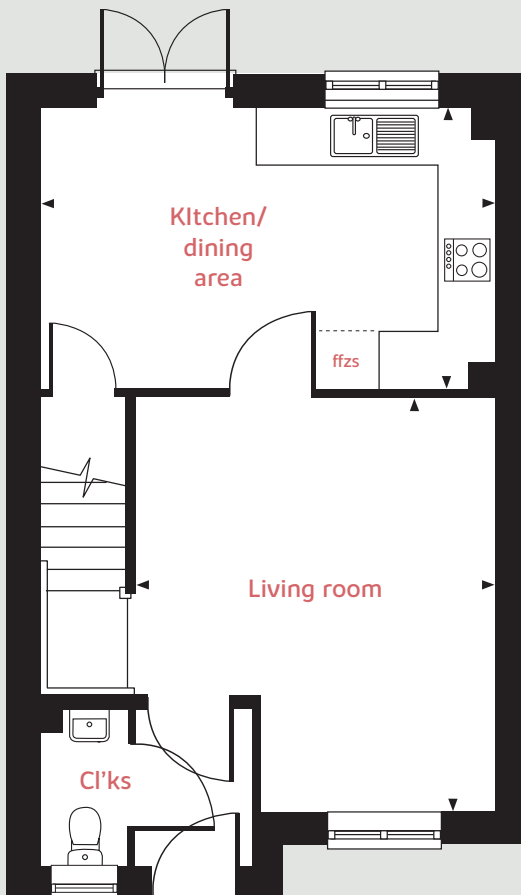
2.67m x 2.39m 8' 9" x 7' 10"

Bedroom 3

2.39m x 2.03m 7' 10" x 6' 7"

lh	loft hatch	ffzs	fridge freezer space
cup'd	cupboard	◀ ▶	measuring points

Ground Floor



The illustrations shown are computer generated impressions of how the property may look and are indicative only. External details or finishes may vary on individual plots and homes may be built in either detached or attached styles depending on the development layout. Exact specifications, window styles and whether a property is left or righthanded may differ from plot to plot. Please speak to our sales consultant for specific plot details.

The floorplan has been produced for illustrative purposes only. Room sizes shown are between arrow points as indicated on plan. The dimensions have tolerances of + or -50mm and should not be used other than for general guidance. If specific dimensions are required, enquiries should be made to the sales consultant. The floor plans shown are not to scale. Measurements are based on the original drawings. Slight variations may occur during construction.

Linden
HOMES



The Eveleigh 3 bedroom home

Pleasley View

Shirebrook, NG20 8FY | **01623 306 796**

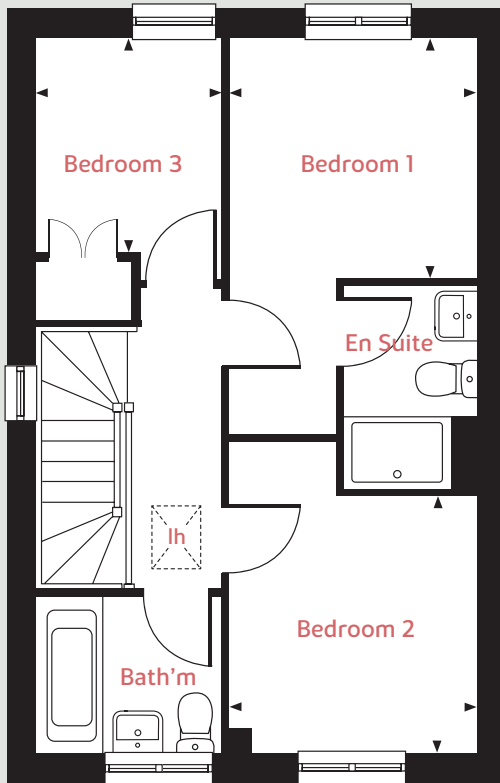
lindenhomes.co.uk

Linden
HOMES

The Eveleigh

3 bedroom home

First Floor



Ground floor

Living room

4.98m x 3.20m 16'4" x 10'6"

Kitchen / dining area

4.78m x 2.80m 15'8" x 9'2"

First Floor

Bedroom 1

2.78m x 2.72m 9'1" x 8'11"

Bedroom 2

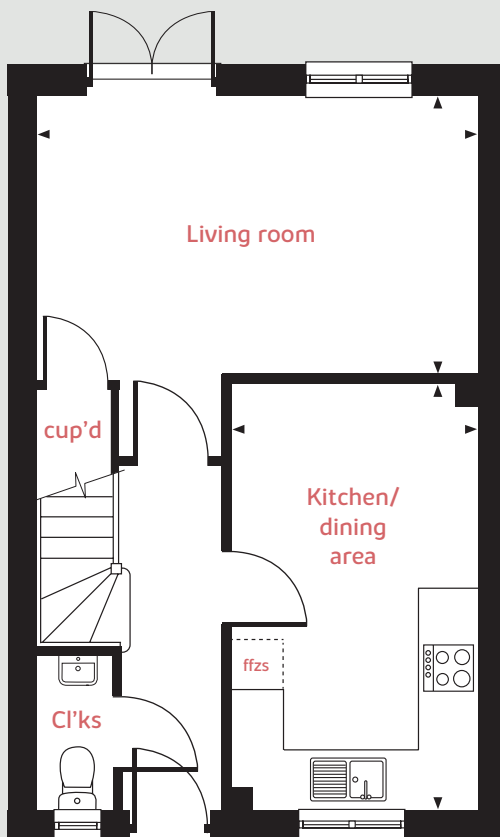
2.90m x 2.78m 9'6" x 9'1"

Bedroom 3

2.38m x 2.16m 7'9" x 7'1"

lh	loft hatch	ffzs	fridge freezer space
cup'd	cupboard	◀ ▶	measuring points

Ground Floor



The illustrations shown are computer generated impressions of how the property may look and are indicative only. External details or finishes may vary on individual plots and homes may be built in either detached or attached styles depending on the development layout. Exact specifications, window styles and whether a property is left or righthanded may differ from plot to plot. Please speak to our sales consultant for specific plot details.

The floorplan has been produced for illustrative purposes only. Room sizes shown are between arrow points as indicated on plan. The dimensions have tolerances of + or -50mm and should not be used other than for general guidance. If specific dimensions are required, enquiries should be made to the sales consultant. The floor plans shown are not to scale. Measurements are based on the original drawings. Slight variations may occur during construction.

Linden
HOMES



The Mountford 3 bedroom home

Pleasley View

Shirebrook, NG20 8FY | 01623 306 796

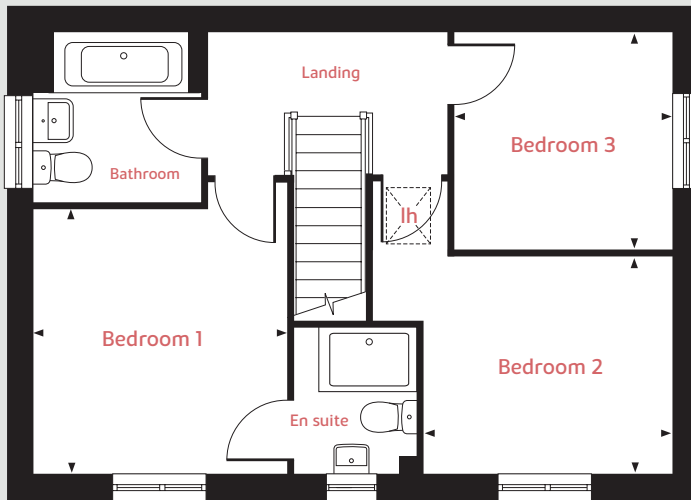
lindenhomes.co.uk

Linden
HOMES

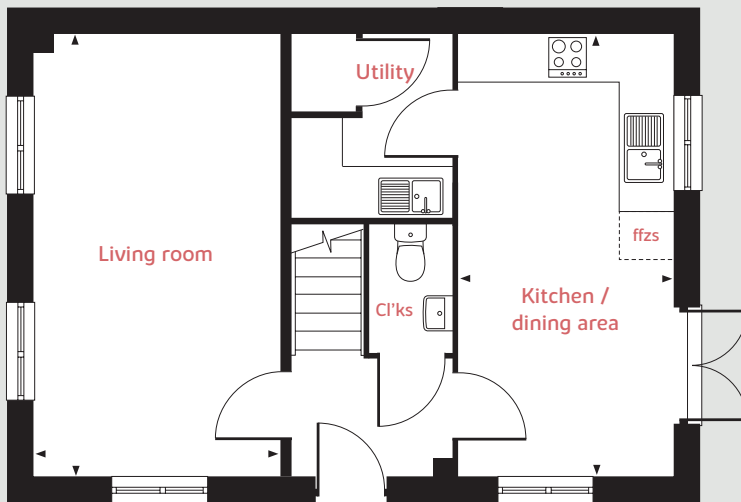
The Mountford

3 bedroom home

First Floor



Ground Floor



Ground floor

Living room	5.64m x 3.21m	18'6" x 10'6"
Kitchen/dining area	5.64m x 2.74m	18'6" x 8'11"

First Floor

Bedroom 1	3.38m x 3.21m	11'1" x 10'6"
Bedroom 2	3.16m x 2.78m	10'4" x 9'1"
Bedroom 3	2.79m x 2.74m	9'1" x 8'11"

lh loft hatch ◀ ▶ measuring points
ffzs fridge freezer space

The illustrations shown are computer generated impressions of how the property may look and are indicative only. External details or finishes may vary on individual plots and homes may be built in either detached or attached styles depending on the development layout. Exact specifications, window styles and whether a property is left or righthanded may differ from plot to plot. Please speak to our sales consultant for specific plot details.

The floorplan has been produced for illustrative purposes only. Room sizes shown are between arrow points as indicated on plan. The dimensions have tolerances of + or -50mm and should not be used other than for general guidance. If specific dimensions are required, enquiries should be made to the sales consultant. The floor plans shown are not to scale. Measurements are based on the original drawings. Slight variations may occur during construction.

Linden
HOMES



The Vale 3 bedroom home

Pleasley View

Shirebrook, NG20 8FY | **01623 306 796**

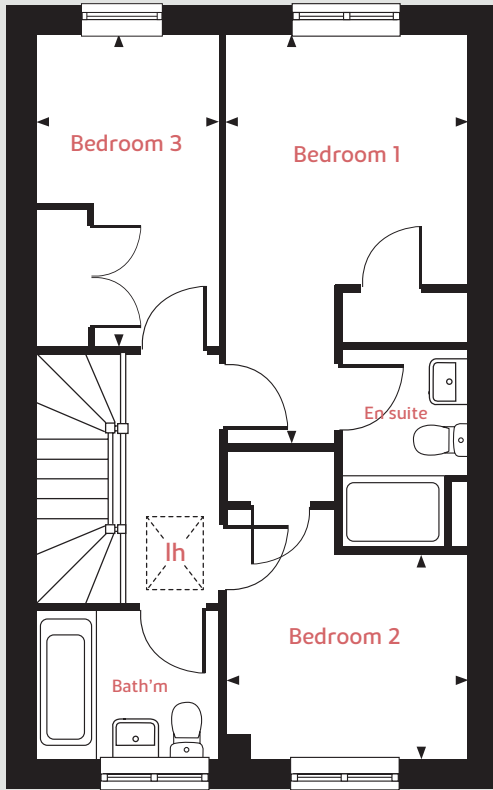
lindenhomes.co.uk

Linden
HOMES

The Vale

3 bedroom home

First Floor



Ground floor

Living room

4.77m x 2.90m 15'7" x 9'6"

Kitchen / dining area

5.09m x 3.64m 16'8" x 11'11"

First Floor

Bedroom 1

4.83m x 2.85m 15'10" x 9'4"

Bedroom 2

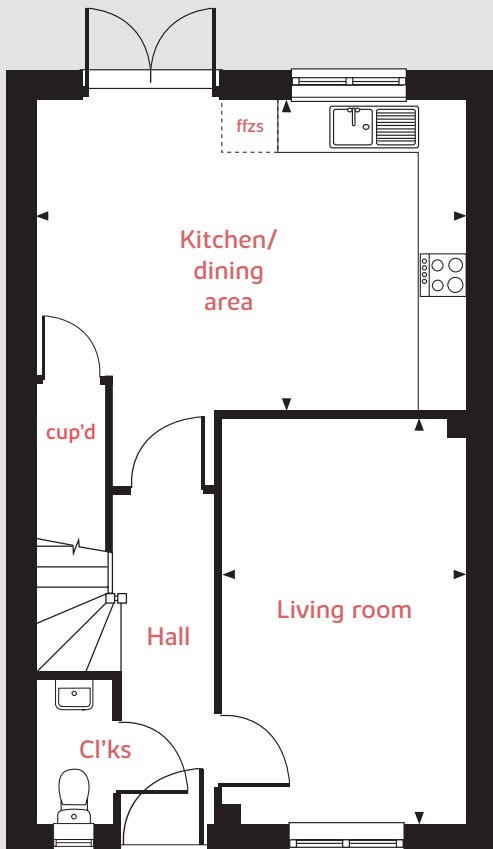
2.85m x 2.37m 9'4" x 7'9"

Bedroom 3

3.69m x 2.15m 12'1" x 7'0"

lh	loft hatch	ffzs	fridge freezer space
cup'd	cupboard	◀ ▶	measuring points

Ground Floor



The illustrations shown are computer generated impressions of how the property may look and are indicative only. External details or finishes may vary on individual plots and homes may be built in either detached or attached styles depending on the development layout. Exact specifications, window styles and whether a property is left or righthanded may differ from plot to plot. Please speak to our sales consultant for specific plot details.

The floorplan has been produced for illustrative purposes only. Room sizes shown are between arrow points as indicated on plan. The dimensions have tolerances of + or -50mm and should not be used other than for general guidance. If specific dimensions are required, enquiries should be made to the sales consultant. The floor plans shown are not to scale. Measurements are based on the original drawings. Slight variations may occur during construction.

Linden
HOMES



The Coatham 3 bedroom home

Pleasley View

Shirebrook, NG20 8FY | **01623 306 796**

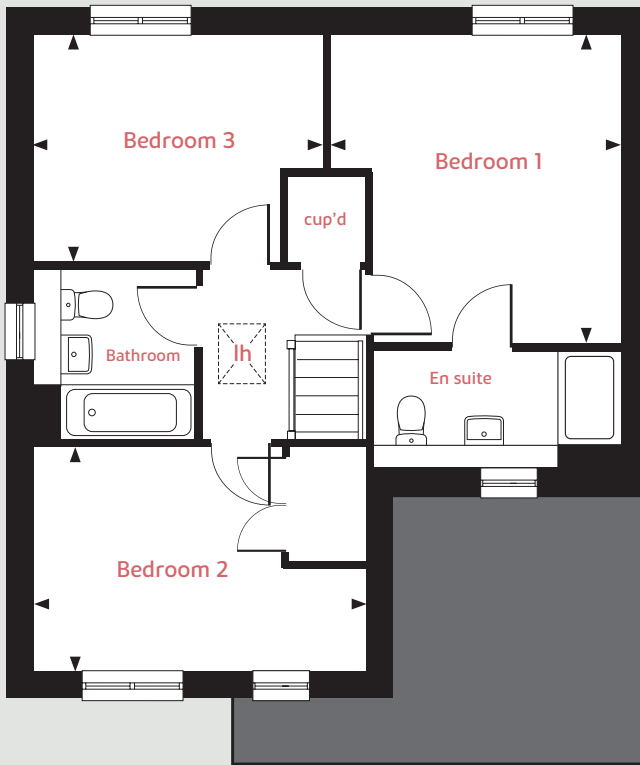
lindenhomes.co.uk

Linden
HOMES

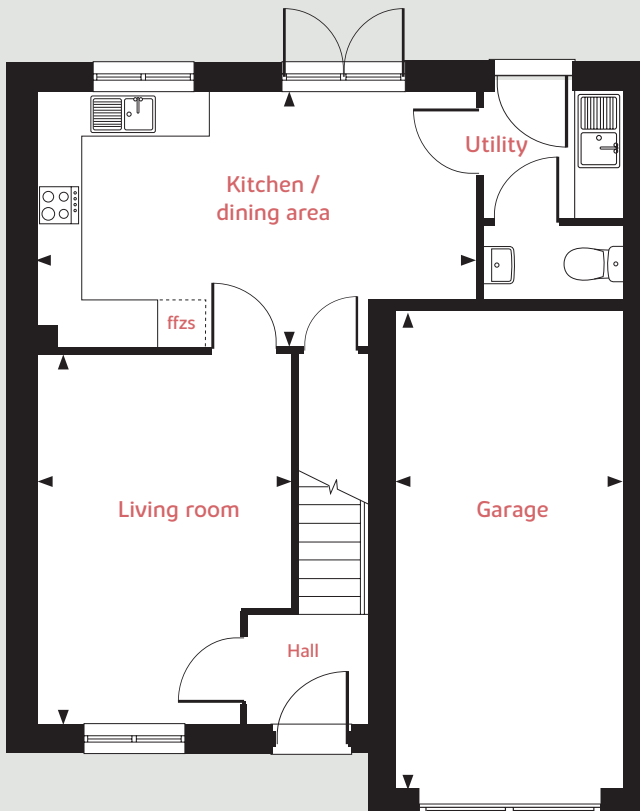
The Coatham

3 bedroom home

First Floor



Ground Floor



Ground floor

Living room
4.77m x 3.30m 15'7" x 10'9"

Kitchen / dining area
5.68 x 3.30m 18'7" x 10'9"

First Floor

Bedroom 1
3.97m x 3.72m 13'0" x 12'2"

Bedroom 2
4.28m x 2.88 14'0" x 9'5"

Bedroom 3
3.76m x 2.94m 12'4" x 9'7"

lh loft hatch ffzs fridge freezer space
cup'd cupboard ◀ ▶ measuring points

The illustrations shown are computer generated impressions of how the property may look and are indicative only. External details or finishes may vary on individual plots and homes may be built in either detached or attached styles depending on the development layout. Exact specifications, window styles and whether a property is left or righthanded may differ from plot to plot. Please speak to our sales consultant for specific plot details.

The floorplan has been produced for illustrative purposes only. Room sizes shown are between arrow points as indicated on plan. The dimensions have tolerances of + or -50mm and should not be used other than for general guidance. If specific dimensions are required, enquiries should be made to the sales consultant. The floor plans shown are not to scale. Measurements are based on the original drawings. Slight variations may occur during construction.

Linden
HOMES



The Brook 3 bedroom home

Pleasley View

Shirebrook, NG20 8FY | **01623 306 796**

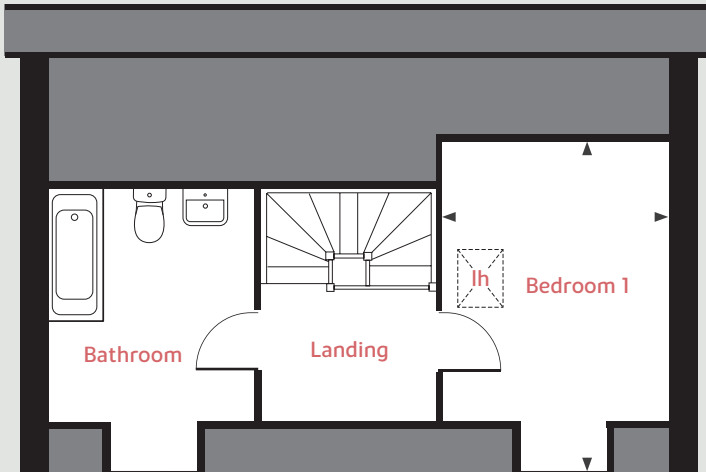
[lindenhomes.co.uk](https://www.lindenhomes.co.uk)

Linden
HOMES

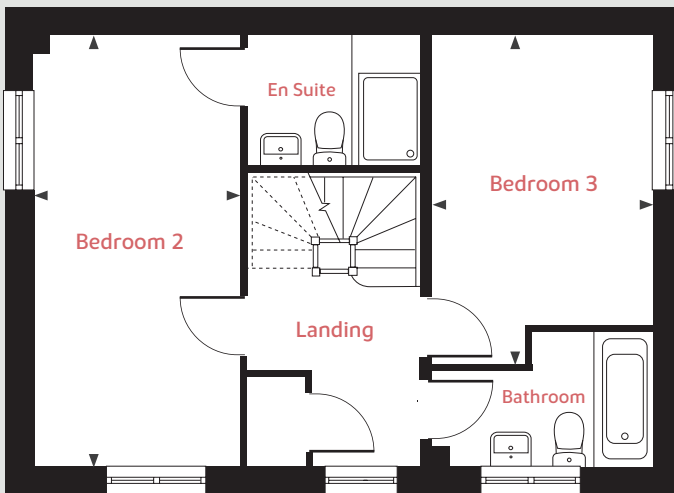
The Brook

3 bedroom home

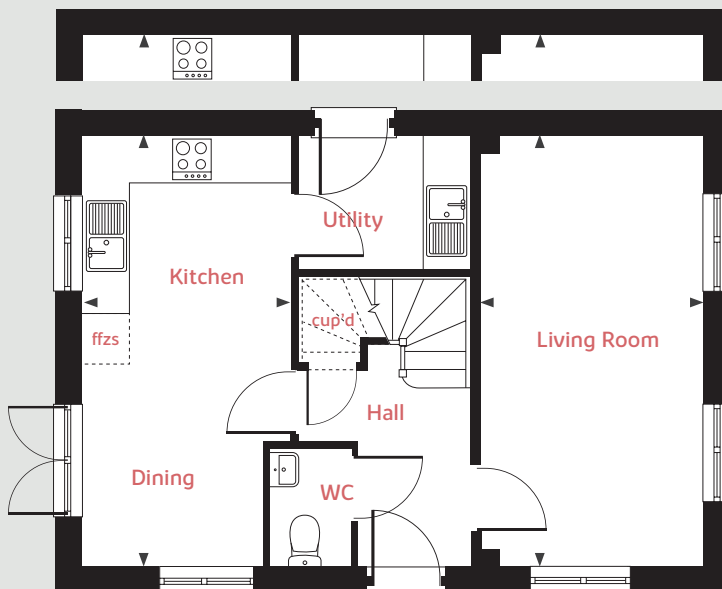
Second Floor



First Floor



Ground Floor



Ground Floor

Kitchen/dining

5.64m x 2.74m

18'6" x 8'11"

Living

5.64m x 2.98m

18'6" x 9'9"

First Floor

Bedroom 2

5.64m x 2.72m

18'6" x 8'11"

Bedroom 3

3.87m x 2.98m

12'8" x 9'9"

Second Floor

Bedroom 1

3.63m x 2.96m

11'10" x 9'8"

lh loft hatch measuring points
ffzs fridge freezer space cup'd cupboard

The illustrations shown are computer generated impressions of how the property may look and are indicative only. External details or finishes may vary on individual plots and homes may be built in either detached or attached styles depending on the development layout. Exact specifications, window styles and whether a property is left or righthanded may differ from plot to plot. Please speak to our sales consultant for specific plot details.

The floorplan has been produced for illustrative purposes only. Room sizes shown are between arrow points as indicated on plan. The dimensions have tolerances of + or -50mm and should not be used other than for general guidance. If specific dimensions are required, enquiries should be made to the sales consultant. The floor plans shown are not to scale. Measurements are based on the original drawings. Slight variations may occur during construction.

Linden
HOMES



The Robin 3 bedroom home

Pleasley View

Shirebrook, NG20 8FY | **01623 306 796**

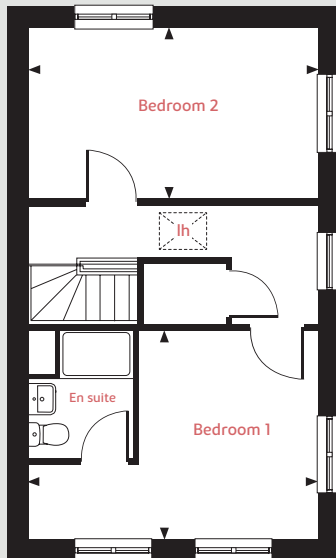
lindenhomes.co.uk

Linden
HOMES

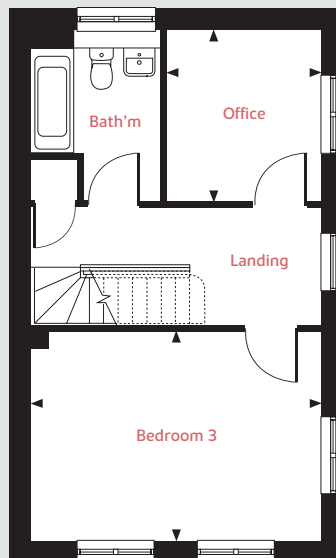
The Robin

3 bedroom home

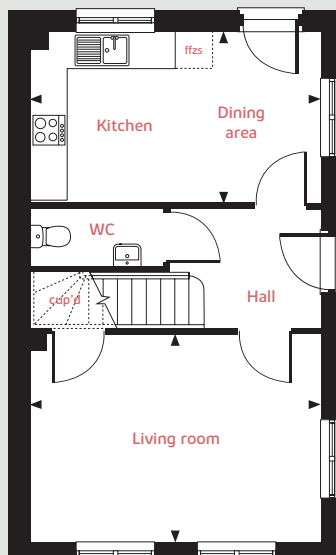
Second Floor



First Floor



Ground Floor



Ground Floor

Kitchen/dining

4.79m x 2.83m

15'8" x 9'3"

Living room

4.79m x 3.45m

15'8" x 11'3"

First Floor

Bedroom 3

4.79m x 3.45m

15'8" x 11'3"

Office

2.84m x 2.57m

9'3" x 8'5"

Second Floor

Bedroom 1

4.79m x 3.45m

15'8" x 11'3"

Bedroom 2

4.79m x 2.83m

15'8" x 9'3"

lh loft hatch ◀ ▶ measuring points
ffzs fridge freezer space cup'd cupboard

The illustrations shown are computer generated impressions of how the property may look and are indicative only. External details or finishes may vary on individual plots and homes may be built in either detached or attached styles depending on the development layout. Exact specifications, window styles and whether a property is left or righthanded may differ from plot to plot. Please speak to our sales consultant for specific plot details.

The floorplan has been produced for illustrative purposes only. Room sizes shown are between arrow points as indicated on plan. The dimensions have tolerances of + or -50mm and should not be used other than for general guidance. If specific dimensions are required, enquiries should be made to the sales consultant. The floor plans shown are not to scale. Measurements are based on the original drawings. Slight variations may occur during construction.

Linden
HOMES



The Aslin 4 bedroom home

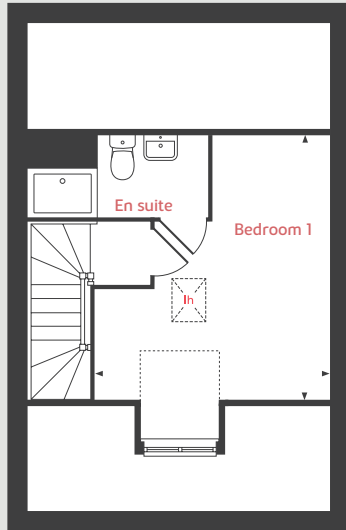
Pleasley View

Shirebrook, NG20 8FY | **01623 306 796**

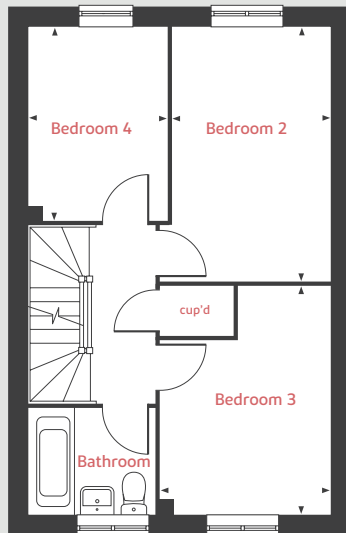
lindenhomes.co.uk

Linden
HOMES

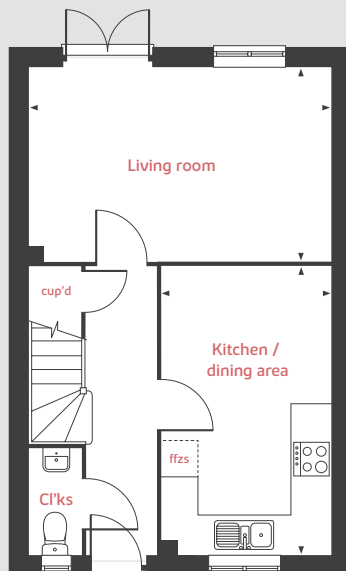
Second Floor



First Floor



Ground Floor



The Aslin

4 bedroom home

Ground Floor

Kitchen/ dining area

4.83m x 2.83m 15'10" x 9'3"

Living room

5.03m x 3.22m 16'6" x 10'6"

First Floor

Bedroom 2

4.23m x 2.56m 13'10" x 8'4"

Bedroom 3

3.81m x 2.81m 12'6" x 9'2"

Bedroom 4

3.22m x 2.41m 10'6" x 7'10"

Second Floor

Bedroom 1

4.49m x 3.92 14'8" x 12'10"

lh	loft hatch	ffzs	fridge freezer space
cup'd	cupboard	◀ ▶	measuring points

The illustrations shown are computer generated impressions of how the property may look and are indicative only. External details or finishes may vary on individual plots and homes may be built in either detached or attached styles depending on the development layout. Exact specifications, window styles and whether a property is left or righthanded may differ from plot to plot. Please speak to our sales consultant for specific plot details.

The floorplan has been produced for illustrative purposes only. Room sizes shown are between arrow points as indicated on plan. The dimensions have tolerances of + or -50mm and should not be used other than for general guidance. If specific dimensions are required, enquiries should be made to the sales consultant. The floor plans shown are not to scale. Measurements are based on the original drawings. Slight variations may occur during construction.

Linden
HOMES



The Burnet 4 bedroom home

Pleasley View

Shirebrook, NG20 8FY | **01623 306 796**

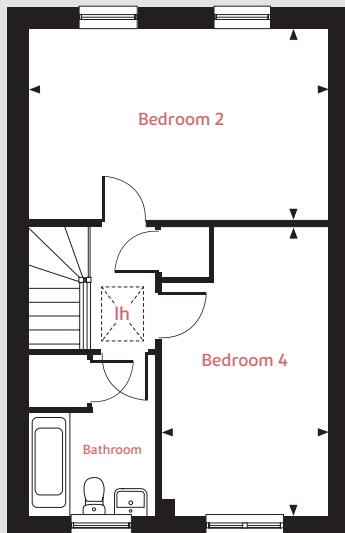
[lindenhomes.co.uk](https://www.lindenhomes.co.uk)

Linden
HOMES

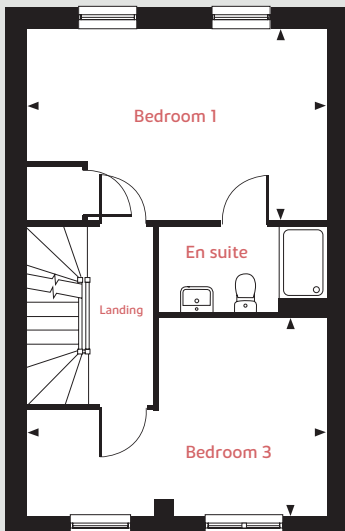
The Burnet

4 bedroom home

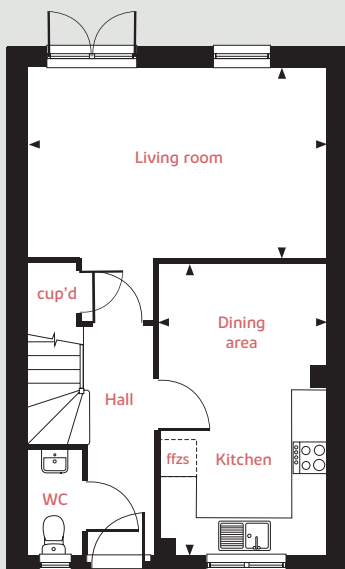
Second Floor



First Floor



Ground Floor



Ground Floor

Living room	5.03m x 3.19m	16'6" x 10'5"
Kitchen/dining area	4.85m x 2.83m	15'10" x 9'3"

First Floor

Bedroom 1	5.03m x 3.22m	16'6" x 10'6"
Bedroom 3	5.03m x 3.30m	16'6" x 10'9"

Second Floor

Bedroom 2	5.03m x 3.22m	16'6" x 10'6"
Bedroom 4	4.82m x 2.81m	15'9" x 9'2"

lh	loft hatch	◀ ▶	measuring points
ffzs	fridge freezer space	cup'd	cupboard

The illustrations shown are computer generated impressions of how the property may look and are indicative only. External details or finishes may vary on individual plots and homes may be built in either detached or attached styles depending on the development layout. Exact specifications, window styles and whether a property is left or righthanded may differ from plot to plot. Please speak to our sales consultant for specific plot details.

The floorplan has been produced for illustrative purposes only. Room sizes shown are between arrow points as indicated on plan. The dimensions have tolerances of + or -50mm and should not be used other than for general guidance. If specific dimensions are required, enquiries should be made to the sales consultant. The floor plans shown are not to scale. Measurements are based on the original drawings. Slight variations may occur during construction.

Linden
HOMES



The Mylne 4 bedroom home

Pleasley View

Shirebrook, NG20 8FY | **01623 306 796**

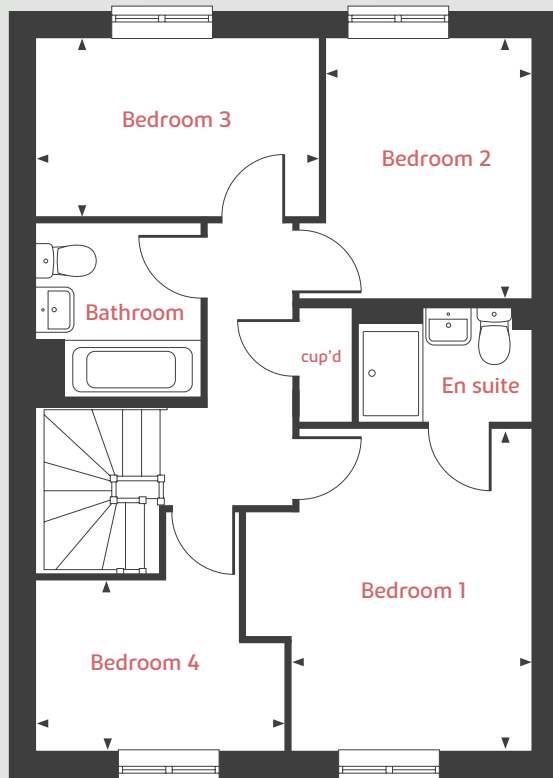
lindenhomes.co.uk

Linden
HOMES

The Mylne

4 bedroom home

First Floor



Ground floor

Living room

4.88m x 3.34m

16'0" x 10'11"

Kitchen/dining/family area

6.09m x 4.42m

19'11" x 14'6"

First Floor

Bedroom 1

3.96m x 3.49m

12'11" x 11'5"

Bedroom 2

3.25m x 2.54m

10'7" x 8'4"

Bedroom 3

3.48m x 2.22m

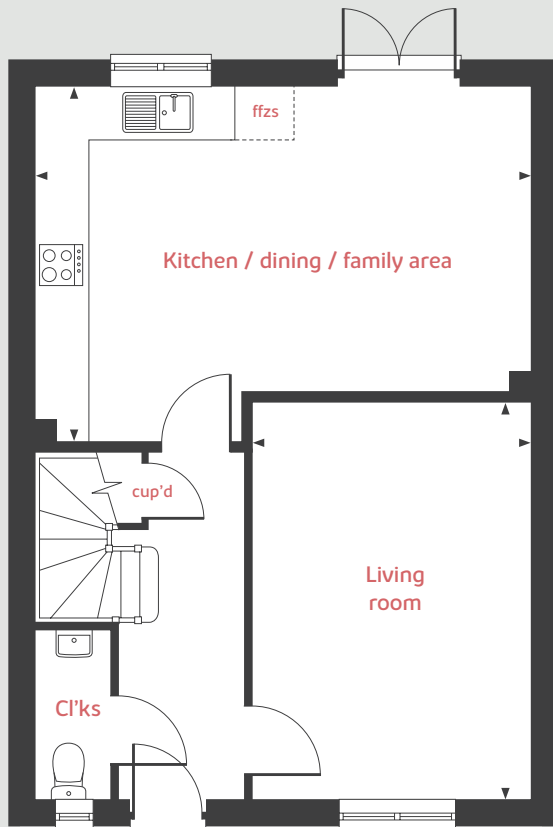
11'5" x 7'3"

Bedroom 4

3.13m x 2.12m

10'3" x 6'11"

Ground Floor



ffzs fridge freezer space ◀ ▶ measuring points
cup'd cupboard

The illustrations shown are computer generated impressions of how the property may look and are indicative only. External details or finishes may vary on individual plots and homes may be built in either detached or attached styles depending on the development layout. Exact specifications, window styles and whether a property is left or righthanded may differ from plot to plot. Please speak to our sales consultant for specific plot details.

The floorplan has been produced for illustrative purposes only. Room sizes shown are between arrow points as indicated on plan. The dimensions have tolerances of + or -50mm and should not be used other than for general guidance. If specific dimensions are required, enquiries should be made to the sales consultant. The floor plans shown are not to scale. Measurements are based on the original drawings. Slight variations may occur during construction.

Linden
HOMES



The Goodridge 4 bedroom home

Pleasley View

Shirebrook, NG20 8FY | 01623 306 796

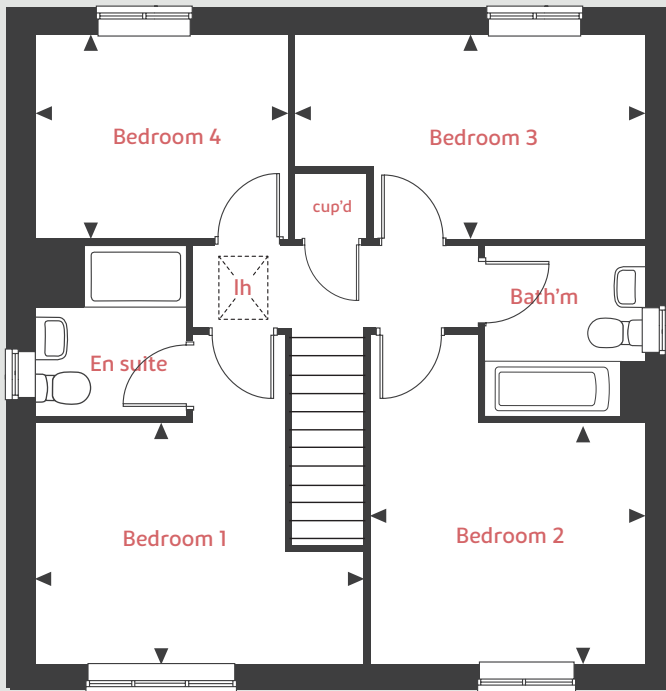
lindenhomes.co.uk

Linden
HOMES

The Goodridge

4 bedroom home

First Floor



Ground floor

Living Room

4.80m x 3.45m 15'8" x 11'3"

Kitchen/Dining Area

5.76m x 3.02m 18'10" x 9'10"

First Floor

Bedroom 1

4.13m x 3.02m 13'6" x 9'10"

Bedroom 2

3.46m x 3.02m 11'4" x 9'10"

Bedroom 3

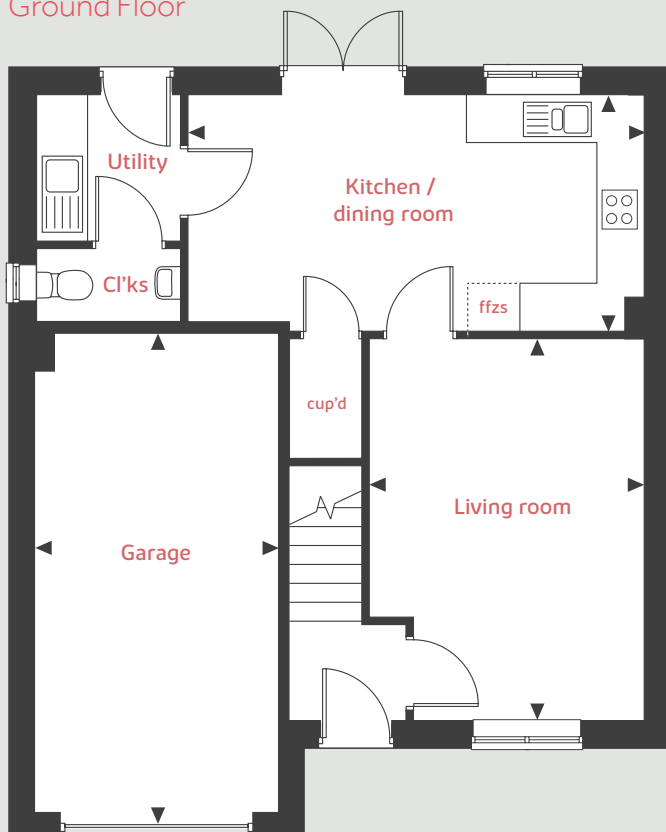
4.39m x 2.54m 14'4" x 8'4"

Bedroom 4

3.21m x 2.54m 10'6" x 8'4"

lh	loft hatch	ffzs	fridge freezer space
cup'd	cupboard	◀ ▶	measuring points

Ground Floor



The illustrations shown are computer generated impressions of how the property may look and are indicative only. External details or finishes may vary on individual plots and homes may be built in either detached or attached styles depending on the development layout. Exact specifications, window styles and whether a property is left or righthanded may differ from plot to plot. Please speak to our sales consultant for specific plot details.

The floorplan has been produced for illustrative purposes only. Room sizes shown are between arrow points as indicated on plan. The dimensions have tolerances of + or -50mm and should not be used other than for general guidance. If specific dimensions are required, enquiries should be made to the sales consultant. The floor plans shown are not to scale. Measurements are based on the original drawings. Slight variations may occur during construction.

Linden
HOMES



Specification

We give you so much more

Pleasley View

Shirebrook NG20 8FY | 01623 306 796

lindenhomes.co.uk

Linden
HOMES

Specification

We give you so much more

Each home will be independently surveyed during construction by the NHBC, who will issue their 10 year warranty certificate on completion of the home.

	2 bedroom	The Harcourt	The Harcourt II	The Atkins	3 bedroom	The Eveleigh	The Emmett	The Mountford	The Vale	The Wyatt
Kitchen										
Symphony Konzept range kitchen with laminate worktop	■	■	■	■	■	■	■	■	■	■
Stainless steel sink and drainer (single bowl) with chrome mixer tap	■	■	■	■	■	■	■	■	■	■
Stainless steel sink and drainer (single bowl) with chrome mixer tap in utility							■			
Indesit Ceramic hob (60cm) with Indesit built-in single under oven, with stainless steel splashback and integrated silver hood.	■	■	■	■	■	■	■	■	■	■
Indesit Ceramic hob (60 cm) with built-in single under oven, with stainless steel splashback and 60cm stainless steel charcoal filtered chimney hood.										
White pendant light holder	■	■	■	■	■	■	■	■	■	■
Fridge/ freezer space	■	■	■	■	■	■	■	■	■	■
Space for integrated dishwasher with plumbing and electrics	■	■	■	■	■	■	■	■	■	■
Space for washing machine with plumbing and electrics in kitchen	■	■	■	■	■			■	■	■
Space for washing machine with plumbing and electrics in utility								■		
Bathroom, en suite(s)										
Contemporary white sanitaryware	■	■	■	■	■	■	■	■	■	■
Close Coupled WC to cloakroom	■	■	■	■	■	■	■	■	■	■
Low profile shower tray with glass enclosure in ensuite				■	■	■	■	■	■	■
Handheld hair wash attachment in bathroom				■	■	■	■	■	■	■
Shower over the bath	■	■	■							
Choice of standard Porcelanosa wall tiling (splashback, 450mm height over bath, and full-height to shower cubicle)	■	■	■	■	■	■	■	■	■	■
White batten light holder	■	■	■	■	■	■	■	■	■	■
Doors & Windows										
Front door with multi-point security locking system and security chain	■	■	■	■	■	■	■	■	■	■
PVCu double glazing to windows	■	■	■	■	■	■	■	■	■	■
Double glazed PVCu French doors	■	■	■	■	■	■	■	■	■	■
Internal ladder door style pre-primed with Brass Satin finish handles	■	■	■	■	■	■	■	■	■	■
Paving outside French/bifold door and path to garage personnel door (where applicable)	■	■	■	■	■	■	■	■	■	■
Other										
White painted walls and smooth white ceilings	■	■	■	■	■	■	■	■	■	■
TV point to lounge and family room (where applicable)	■	■	■	■	■	■	■	■	■	■
Master telephone socket to lounge and study where applicable	■	■	■	■	■	■	■	■	■	■
Air Source Heat Pump	■	■	■	■	■	■	■	■	■	■
Thermostatic valves to all radiators (with the exception of rooms with separate thermostat control)	■	■	■	■	■	■	■	■	■	■
Contemporary lantern to front door and wiring only to the rear door	■	■	■	■	■	■	■	■	■	■
Mains wired smoke detectors with battery back-up	■	■	■	■	■	■	■	■	■	■
Power and lighting to garage (where in curtilage of the plot)	■	■	■	■	■	■	■	■	■	■
Enclosed fenced rear garden, and garden gate (where applicable).	■	■	■	■	■	■	■	■	■	■
NHBC Buildmark cover	■	■	■	■	■	■	■	■	■	■
First two years' customer service support from Linden Homes	■	■	■	■	■	■	■	■	■	■

Specification (continued)

We give you so much more

Each home will be independently surveyed during construction by the NHBC, who will issue their 10 year warranty certificate on completion of the home.

	3 bedroom	The Wyatt II	The Robin	The Coatham	The Brook	4 bedroom	The Myline	The Goodridge	The Aslin	The Burnet
Kitchen										
Symphony Konzept range kitchen with laminate worktop	■	■	■	■	■	■	■	■	■	■
Stainless steel sink and drainer (single bowl) with chrome mixer tap	■	■	■	■	■	■	■	■	■	■
Stainless steel sink and drainer (single bowl) with chrome mixer tap in utility			■	■			■			
Indesit Ceramic hob (60cm) with Indesit built-in single under oven, with stainless steel splashback and integrated silver hood.	■	■	■	■						
Indesit Ceramic hob (60 cm) with built-in single under oven, with stainless steel splashback and 60cm stainless steel charcoal filtered chimney hood.						■	■	■	■	
White pendant light holder	■	■	■	■		■	■	■	■	
Fridge/ freezer space	■	■	■	■		■	■	■	■	
Space for integrated dishwasher with plumbing and electrics	■	■	■	■		■	■	■	■	
Space for washing machine with plumbing and electrics in kitchen	■	■				■		■	■	
Space for washing machine with plumbing and electrics in utility			■	■			■			
Bathroom, en suite(s)										
Contemporary white sanitaryware	■	■	■	■		■	■	■	■	
Close Coupled WC to cloakroom	■	■	■	■		■	■	■	■	
Low profile shower tray with glass enclosure in ensuite	■	■	■	■		■	■	■	■	
Handheld hair wash attachment in bathroom	■	■	■	■		■	■	■	■	
Shower over the bath										
Choice of standard Porcelanosa wall tiling (splashback, 450mm height over bath, and full-height to shower cubicle)	■	■	■	■		■	■	■	■	
White batten light holder	■	■	■	■		■	■	■	■	
Doors & Windows										
Front door with multi-point security locking system and security chain	■	■	■	■		■	■	■	■	
PVCu double glazing to windows	■	■	■	■		■	■	■	■	
Double glazed PVCu French doors	■		■	■		■	■	■	■	
Internal ladder door style pre-primed with Brass Satin finish handles	■	■	■	■		■	■	■	■	
Paving outside French/bifold door and path to garage personnel door (where applicable)	■	■	■	■		■	■	■	■	
Other										
White painted walls and smooth white ceilings	■	■	■	■		■	■	■	■	
TV point to lounge and family room (where applicable)	■	■	■	■		■	■	■	■	
Master telephone socket to lounge and study where applicable	■	■	■	■		■	■	■	■	
Air Source Heat Pump	■	■	■	■		■	■	■	■	
Thermostatic valves to all radiators (with the exception of rooms with separate thermostat control)	■	■	■	■		■	■	■	■	
Contemporary lantern to front door and wiring only to the rear door	■	■	■	■		■	■	■	■	
Mains wired smoke detectors with battery back-up	■	■	■	■		■	■	■	■	
Power and lighting to garage (where in curtilage of the plot)	■	■	■	■		■	■	■	■	
Enclosed fenced rear garden, and garden gate (where applicable).	■	■	■	■		■	■	■	■	
NHBC Buildmark cover	■	■	■	■		■	■	■	■	
First two years' customer service support from Linden Homes	■	■	■	■		■	■	■	■	