

# Mill Brook Green

Axminster



**Linden**  
HOMES

# Welcome to Mill Brook Green

This attractive new development is in a great location on the edge of the charming Devon market town of Axminster and just 6 miles from the beautiful Jurassic coast.

The charming town centre with its old-fashioned shop fronts offers a range of independent shops, pubs, restaurants and cafes including the popular River Cottage Canteen and Deli, run by celebrity chef Hugh Fearnley-Whittingstall.

Tesco and Co-op stores are both located in the town and each week a delightful Country Market takes place in the town centre offering an array of local produce, gifts and more. You really can find everything you need in this gem of a Devon town!

Axminster has a community hospital, medical practice and dental practice all a short walk or drive from Mill Brook Green. Nearby, community sports facilities, a supermarket and train station can be found also.

This location really does offer everything, whether you know the area well or are making the move from further afield, you are sure to settle in quickly, as everything is on your doorstep!

From Mill Brook Green, there are a number of scenic walking routes and the world-famous Jurassic Coast is only 6 miles away meaning not only can you enjoy the beautiful surrounding countryside, you can soak up the truly spectacular coastal views as well.

Mill Brook Green can be found just off the A358 that leads south to Axmouth and the coastal resort of Seaton and to the A35, the major trunk road serving the area. The A35 links the town to the M5 and Exeter to the west and to Dorset and its county town of Dorchester in the east.

Axminster railway station runs services to Exeter and on to London's Waterloo, meaning you can make the escape to the country but with easy access to the city when you need it for work or to visit family.

Axminster offers bus routes to Taunton, Exeter and to Lyme Regis for a trip to the beach! Exeter International Airport is 24 miles away.

Nearby Honiton, 11 miles away, is another popular Devon market town providing further variety with antiques, crafts and food shops. For city-lovers Exeter is just less than 30 miles away with its Princesshay and Guildhall shopping centres both offering excellent ranges of retail outlets. One-off boutiques and specialist shops can be found in the Castle and West Quarter.

So, if you're looking for a new home in a location that has it all, your search ends here!

# Mill Brook Green Axminster


### 4 bedroom home

- Sage Home 
- The Roman
- The Buckland
- The Mynster
- The Pembroke
- The Mylne

### 3 bedroom home

- Sage Home 
- The Eveleigh
- The Emmett
- The Mountford
- The Beckett

### 2 bedroom home

- Sage Home 
- The Ashbee
- The Harcourt

### 1 bedroom apartment

- The Weycroft



bcp bin collection point

This plan has been produced for home identification purposes only and is not to scale. The development layout, landscaping and tenure of all dwellings may be subject to change throughout the course of the development. Finishes and materials may vary from those shown on the plan. Please check the details of your chosen plot and housetype with the sales consultant. Development layout plan correct at time of production.





## Around the local neighbourhood

- |  |  |  |
|--|--|--|
| <p><b>1</b> Axminster Hospital<br/>01297 630400</p>      | <p><b>2</b> Axminster Community<br/>Primary School<br/>01297 33005</p> | <p><b>3</b> Tesco Superstore<br/>0345 677 9019</p>                   |
| <p><b>4</b> Axminster Guildhall<br/>01297 33333</p>      | <p><b>5</b> Axminster Train Station<br/>0345 6000 650</p>              | <p><b>6</b> Axminster Town<br/>Football Club<br/>07795 217160</p>    |
| <p><b>7</b> Axe Valley Wildlife Park<br/>01297 34472</p> | <p><b>8</b> Axminster Post Office<br/>01297 631190</p>                 | <p><b>9</b> Coombefield<br/>Veterinary Hospital<br/>01297 630500</p> |

Vistry Homes Limited trading as Linden Homes.  
Registered Office: 11 Tower View, Kings Hill, West Malling, Kent, ME19 4UY.  
Registration Number: 397634. Registered in England & Wales.

Produced by the Vistry Group Design Studio. GD56899 / 10.20

[lindenhomes.co.uk](http://lindenhomes.co.uk)

**Linden**  
HOMES





# The Ashbee

2 bedroom home

Mill Brook Green

Axminster EX13 5HW | 01297 740996

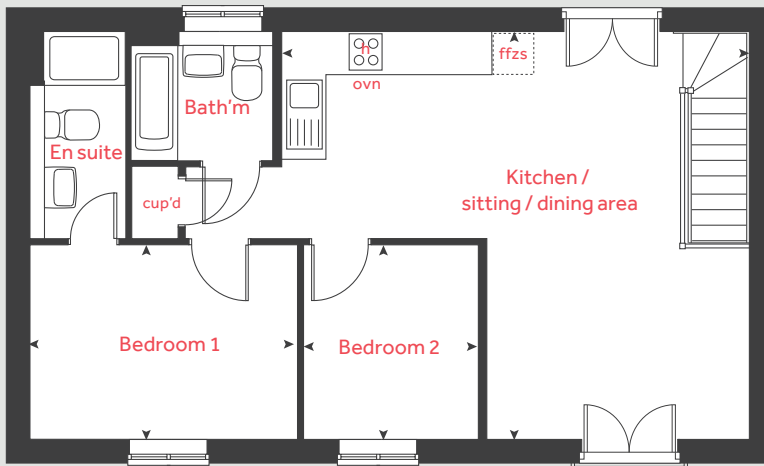
[lindenhomes.co.uk](https://www.lindenhomes.co.uk)

**Linden**  
HOMES

# The Ashbee

2 bedroom home

## First floor



### First floor

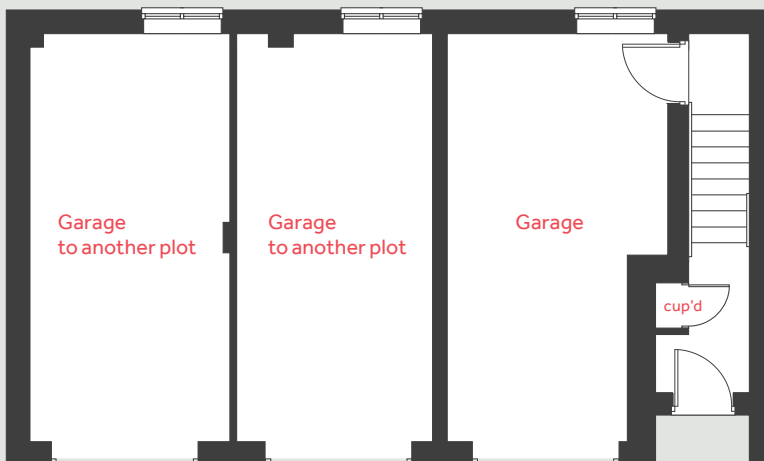
Kitchen / sitting / dining area  
6.93m x 6.04m      22' 8" x 19' 9"

Bedroom 1  
3.97m x 2.90m      13' 1" x 9' 6"

Bedroom 2  
2.90m x 2.58m      9' 6" x 8' 6"

h	hob	cup'd	cupboard
ovn	oven	◀ ▶	measuring points
ffzs	fridge freezer space		

## Ground floor



Please note, floorplans and dimensions are taken from architectural drawings and are for guidance only. Dimensions stated are within a tolerance of plus or minus 50mm. Overall dimensions are usually stated and there may be projections into these. With our continual improvement policy we constantly review our designs and specification to ensure we deliver the best products to our customers. Computer generated images not to scale. Finishes and materials may vary and landscaping is illustrative only. Kitchen layouts are indicative only and may change. To confirm specific details on our homes please see our sales consultant.

Produced by Vistry Group Design Studio.

When you have finished with this leaflet please recycle it.

DAXM1 DS05172 / 04.23

**Linden**  
HOMES





# The Harcourt

2 bedroom home

Mill Brook Green

Axminster EX13 5HW | 01297 740996

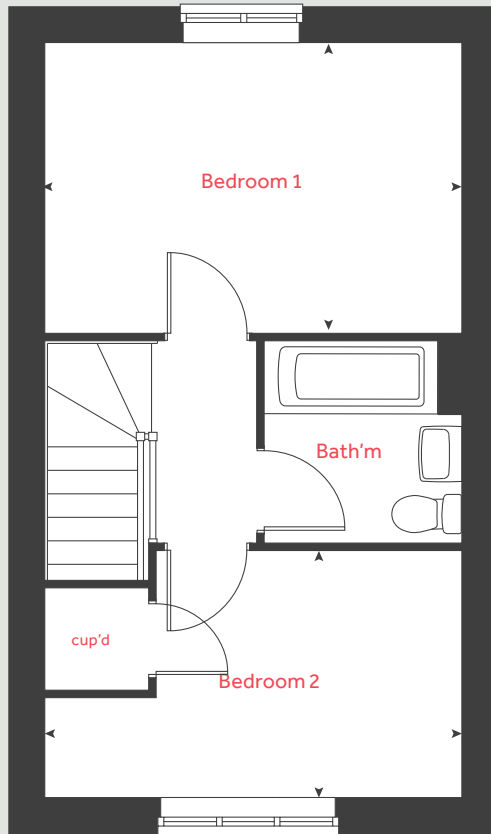
[lindenhomes.co.uk](http://lindenhomes.co.uk)

**Linden**  
HOMES

# The Harcourt

2 bedroom home

## First floor



### Ground floor

**Kitchen**  
2.94m x 2.01m      9' 9" x 6' 7"

**Dining area**  
2.01m x 1.59m      6' 7" x 5' 3"

**Living room**  
4.08m x 2.75m      13' 5" x 9' 1"

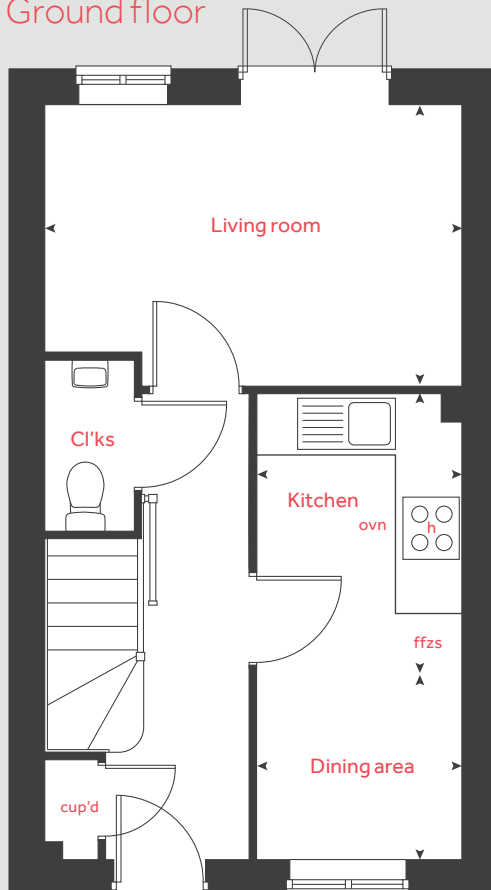
### First floor

**Bedroom 1**  
4.08m x 2.84m      13' 5" x 9' 4"

**Bedroom 2**  
4.08m x 2.41m      13' 5" x 7' 11"

<b>h</b>	hob	<b>cup'd</b>	cupboard
<b>ovn</b>	oven	◀ ▶	measuring points
<b>ffzs</b>	fridge freezer space		

## Ground floor



Please note, floorplans and dimensions are taken from architectural drawings and are for guidance only. Dimensions stated are within a tolerance of plus or minus 50mm. Overall dimensions are usually stated and there may be projections into these. With our continual improvement policy we constantly review our designs and specification to ensure we deliver the best products to our customers. Computer generated images not to scale. Finishes and materials may vary and landscaping is illustrative only. Kitchen layouts are indicative only and may change. To confirm specific details on our homes please see our sales consultant.

Produced by Vistry Group Design Studio.

When you have finished with this leaflet please recycle it.

DAXM1 DS05172 / 04.23

**Linden**  
HOMES





# The Emmett

3 bedroom home

**Mill Brook Green**

Axminster EX13 5HW | 01297 740996

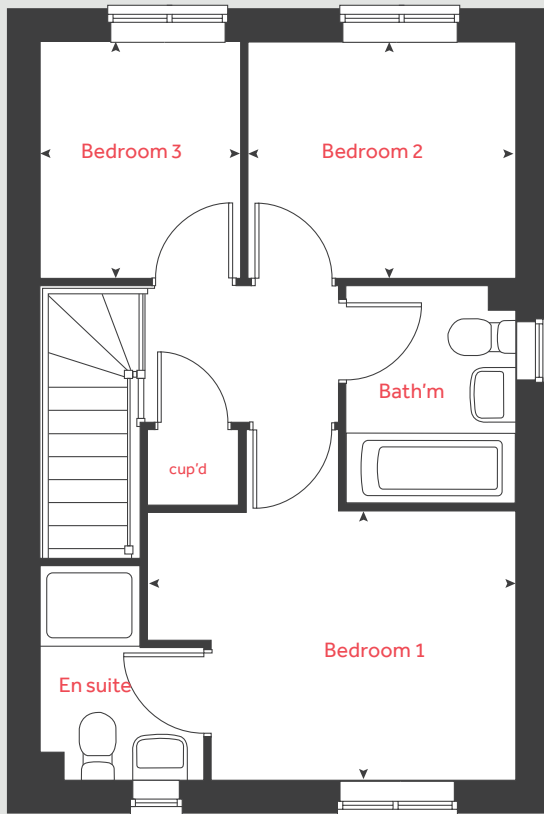
[lindenhomes.co.uk](https://www.lindenhomes.co.uk)

**Linden**  
HOMES

# The Emmett

3 bedroom home

## First floor



### Ground floor

#### Kitchen / dining room

4.75m x 2.96m 15' 7" x 9' 9"

#### Living room

4.35m x 3.78m 14' 4" x 12' 5"

### First floor

#### Bedroom 1

3.68m x 2.69m 12' 1" x 8' 10"

#### Bedroom 2

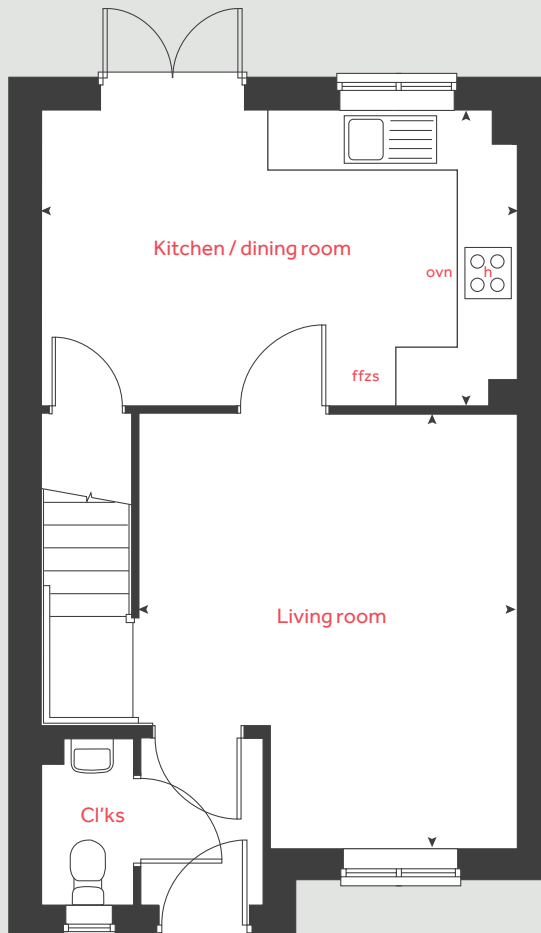
2.68m x 2.37m 8' 9" x 7' 9"

#### Bedroom 3

2.37m x 2.00m 7' 9" x 6' 7"

h	hob	cup'd	cupboard
ovn	oven	◀ ▶	measuring points
ffzs	fridge freezer space		

## Ground floor



Please note, floorplans and dimensions are taken from architectural drawings and are for guidance only. Dimensions stated are within a tolerance of plus or minus 50mm. Overall dimensions are usually stated and there may be projections into these. With our continual improvement policy we constantly review our designs and specification to ensure we deliver the best products to our customers. Computer generated images not to scale. Finishes and materials may vary and landscaping is illustrative only. Kitchen layouts are indicative only and may change. To confirm specific details on our homes please see our sales consultant.

Produced by Vistry Group Design Studio.

When you have finished with this leaflet please recycle it.

DAXM1 DS05172 / 04.23

**Linden**  
HOMES





# The Eveleigh

3 bedroom home

**Mill Brook Green**

Axminster EX13 5HW | 01297 740996

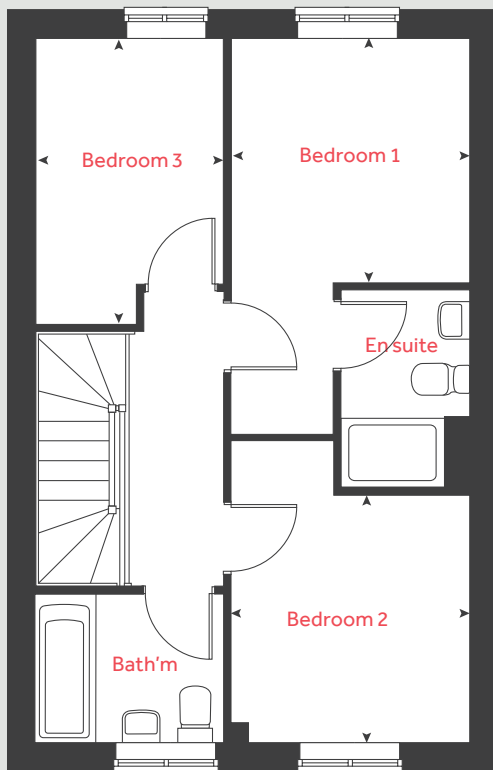
[lindenhomes.co.uk](https://www.lindenhomes.co.uk)

**Linden**  
HOMES

# The Eveleigh

3 bedroom home

## First floor



### Ground floor

Kitchen / dining area  
4.78m x 2.80m 15' 8" x 9' 2"

Living room  
4.98m x 3.20m 16' 4" x 10' 6"

### First floor

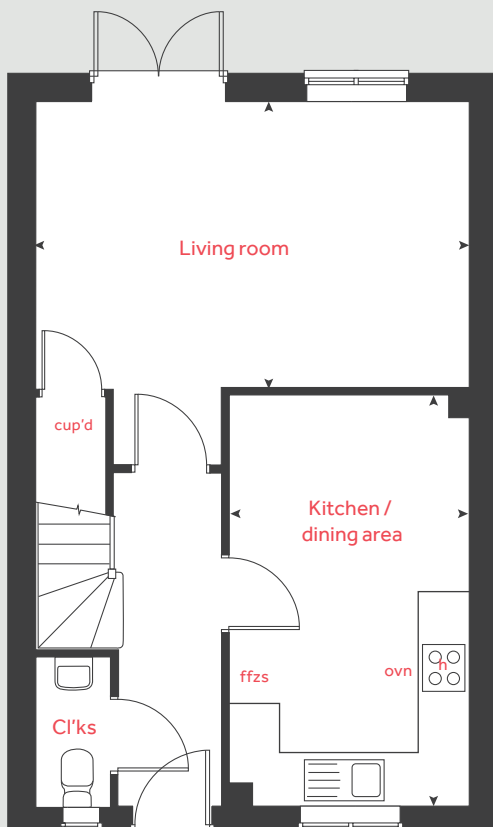
Bedroom 1  
2.78m x 2.72m 9' 2" x 8' 11"

Bedroom 2  
2.90m x 2.78m 9' 6" x 9' 2"

Bedroom 3  
3.20m x 2.12m 10' 6" x 7' 0"

h	hob	cup'd	cupboard
ovn	oven	< >	measuring points
ffzs	fridge freezer space		

## Ground floor



Please note, floorplans and dimensions are taken from architectural drawings and are for guidance only. Dimensions stated are within a tolerance of plus or minus 50mm. Overall dimensions are usually stated and there may be projections into these. With our continual improvement policy we constantly review our designs and specification to ensure we deliver the best products to our customers. Computer generated images not to scale. Finishes and materials may vary and landscaping is illustrative only. Kitchen layouts are indicative only and may change. To confirm specific details on our homes please see our sales consultant.

Produced by Vistry Group Design Studio.

When you have finished with this leaflet please recycle it.

DAXM1 DS05172 / 04.23

**Linden**  
HOMES





# The Mountford

3 bedroom home

**Mill Brook Green**

Axminster EX13 5HW | 01297 740996

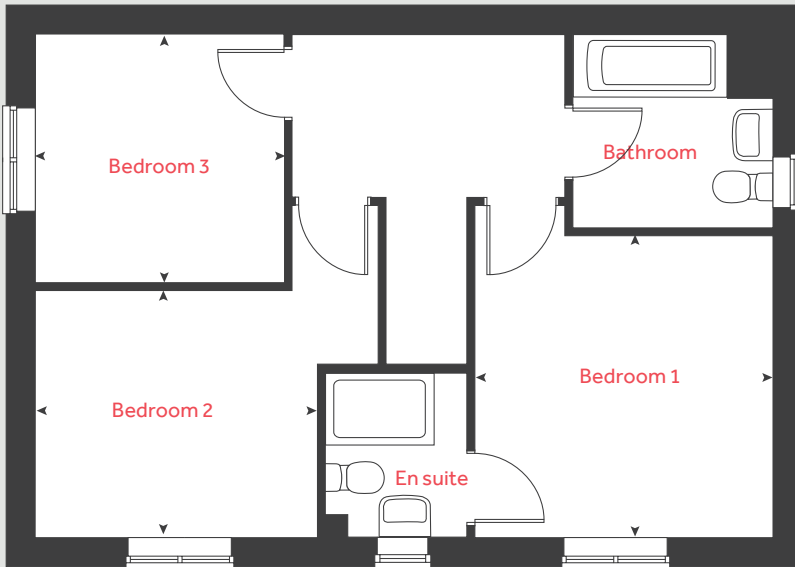
[lindenhomes.co.uk](http://lindenhomes.co.uk)

**Linden**  
HOMES

# The Mountford

3 bedroom home

## First floor



### Ground floor

Kitchen / dining area  
5.59m x 2.70m 18' 4" x 8' 10"

Living room  
5.59m x 3.11m 18' 4" x 10' 3"

### First floor

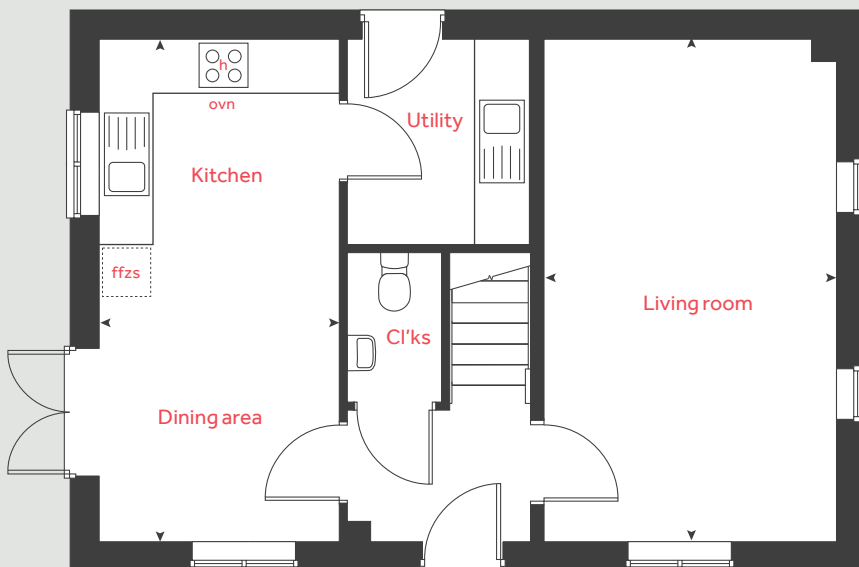
Bedroom 1  
3.36m x 3.19m 11' 1" x 10' 6"

Bedroom 2  
3.15m x 2.75m 10' 4" x 9' 0"

Bedroom 3  
2.76m x 2.76m 9' 1" x 9' 1"

h	hob	cup'd	cupboard
ovn	oven	< >	measuring points
ffzs	fridge freezer space		

## Ground floor



Please note, floorplans and dimensions are taken from architectural drawings and are for guidance only. Dimensions stated are within a tolerance of plus or minus 50mm. Overall dimensions are usually stated and there may be projections into these. With our continual improvement policy we constantly review our designs and specification to ensure we deliver the best products to our customers. Computer generated images not to scale. Finishes and materials may vary and landscaping is illustrative only. Kitchen layouts are indicative only and may change. To confirm specific details on our homes please see our sales consultant.

Produced by Vistry Group Design Studio.

When you have finished with this leaflet please recycle it.

DAXM1 DS05172 / 04.23

**Linden**  
HOMES





# The Becket

3 bedroom home

**Mill Brook Green**

Axminster EX13 5HW | 01297 740996

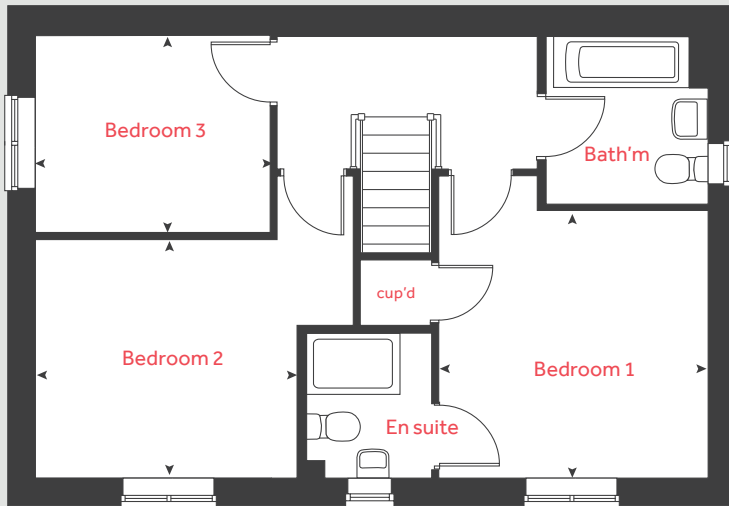
[lindenhomes.co.uk](http://lindenhomes.co.uk)

**Linden**  
HOMES

# The Becket

3 bedroom home

## First floor



### Ground floor

Kitchen / dining area  
5.59m x 2.94m 18' 4" x 9' 8"

Living room  
5.59m x 3.33m 18' 4" x 10' 11"

### First floor

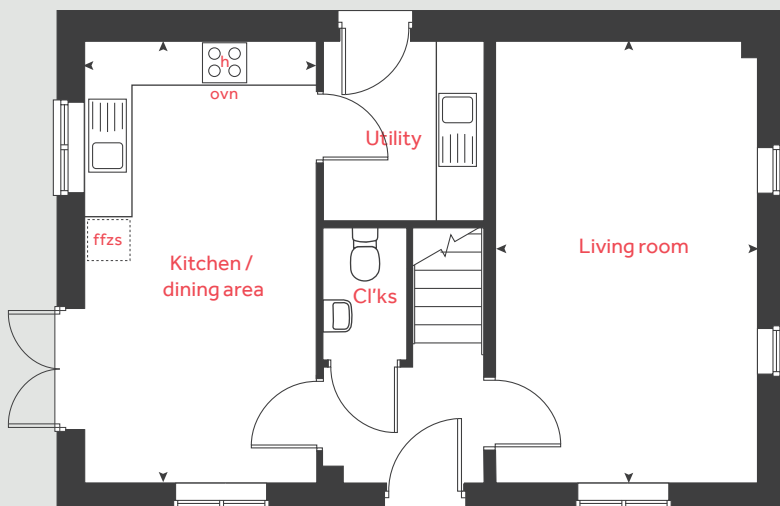
Bedroom 1  
3.41m x 3.36m 11' 2" x 11' 1"

Bedroom 2  
3.34m x 3.00m 10' 11" x 9' 10"

Bedroom 3  
2.99m x 2.51m 9' 10" x 8' 3"

h	hob	cup'd	cupboard
ovn	oven	< >	measuring points
ffzs	fridge freezer space		

## Ground floor



Please note, floorplans and dimensions are taken from architectural drawings and are for guidance only. Dimensions stated are within a tolerance of plus or minus 50mm. Overall dimensions are usually stated and there may be projections into these. With our continual improvement policy we constantly review our designs and specification to ensure we deliver the best products to our customers. Computer generated images not to scale. Finishes and materials may vary and landscaping is illustrative only. Kitchen layouts are indicative only and may change. To confirm specific details on our homes please see our sales consultant.

Produced by Vistry Group Design Studio.

When you have finished with this leaflet please recycle it.

DAXM1 DS05172 / 04.23

**Linden**  
HOMES





# The Buckland

4 bedroom home

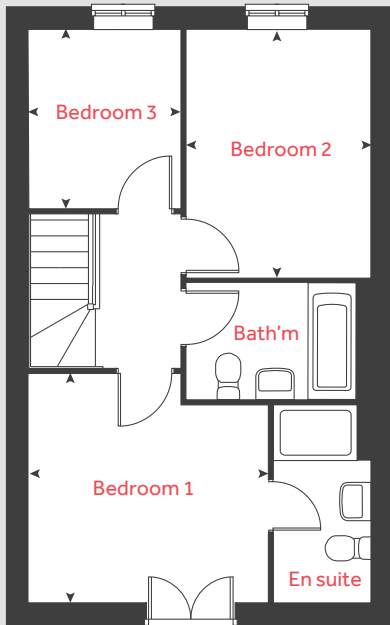
**Mill Brook Green**

Axminster EX13 5HW | 01297 740996

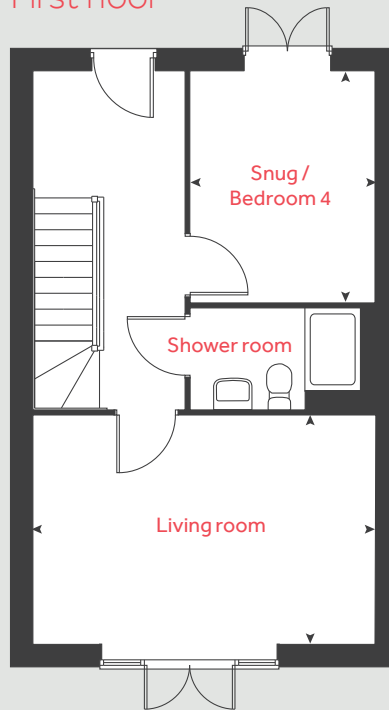
[lindenhomes.co.uk](http://lindenhomes.co.uk)

**Linden**  
HOMES

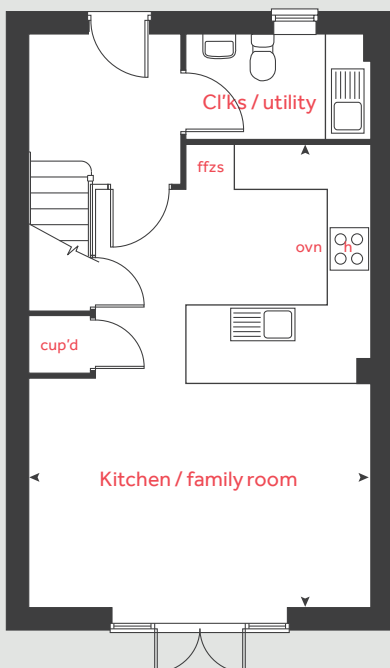
## Second floor



## First floor



## Ground floor



# The Buckland

## 4 bedroom home

### Ground floor

Kitchen / family room  
6.70m x 4.97m      22' 0" x 16' 4"

### First floor

Snug / Bedroom 4  
3.37m x 2.67m      11' 1" x 8' 9"  
Living room  
4.97m x 3.32m      16' 4" x 10' 11"

### Second floor

Bedroom 3  
2.59m x 2.20m      8' 6" x 7' 3"  
Bedroom 2  
3.58m x 2.67m      11' 9" x 8' 9"  
Bedroom 1  
3.46m x 3.32m      11' 4" x 10' 11"

h hob      cup'd cupboard  
ovn oven      measuring points  
ffzs fridge freezer space

Please note, floorplans and dimensions are taken from architectural drawings and are for guidance only. Dimensions stated are within a tolerance of plus or minus 50mm. Overall dimensions are usually stated and there may be projections into these. With our continual improvement policy we constantly review our designs and specification to ensure we deliver the best products to our customers. Computer generated images not to scale. Finishes and materials may vary and landscaping is illustrative only. Kitchen layouts are indicative only and may change. To confirm specific details on our homes please see our sales consultant.

Produced by Vistry Group Design Studio.

When you have finished with this leaflet please recycle it.

DAXM1 DS05172 / 04.23

# Linden HOMES





# The Mylne

4 bedroom home

Mill Brook Green

Axminster EX13 5HW | 01297 740996

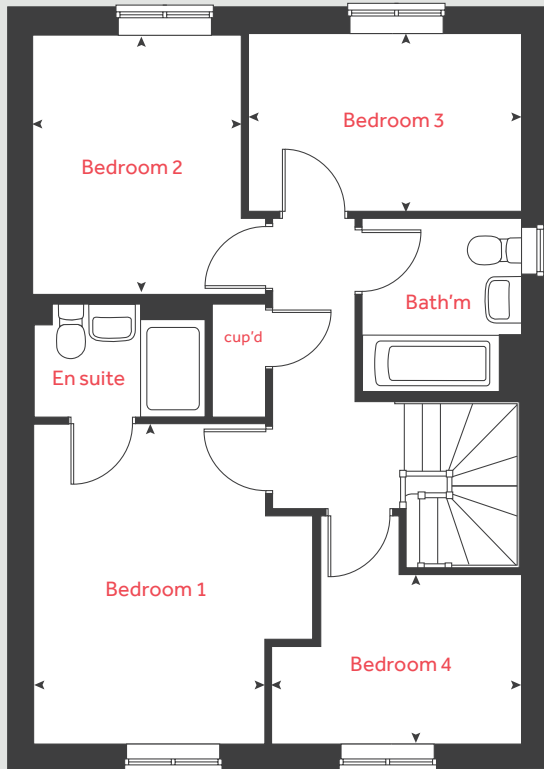
[lindenhomes.co.uk](http://lindenhomes.co.uk)

**Linden**  
HOMES

# The Mylne

## 4 bedroom home

### First floor



### Ground floor

Kitchen / dining / family area  
6.04m x 3.75m 19' 10" x 12' 4"

Living room  
4.83m x 3.39m 15' 10" x 11' 2"

### First floor

Bedroom 1  
3.93m x 2.86m 12' 11" x 9' 5"

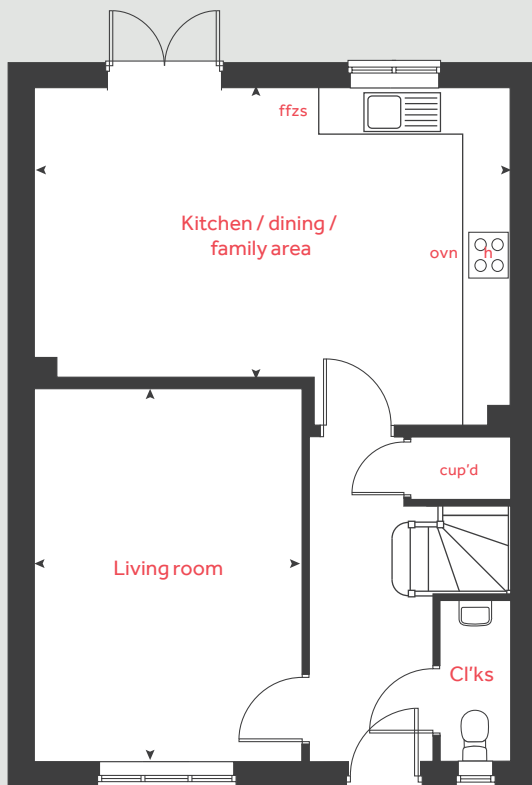
Bedroom 2  
3.20m x 2.56m 10' 6" x 8' 5"

Bedroom 3  
3.39m x 2.20m 11' 2" x 7' 3"

Bedroom 4  
3.10m x 2.10m 10' 2" x 6' 11"

h	hob	cup'd	cupboard
ovn	oven	◀ ▶	measuring points
ffzs	fridge freezer space		

### Ground floor



The floor plan has been produced for illustrative purposes only. Room sizes shown are between arrow points as indicated on plan. The dimensions have tolerances of + or -50mm and should not be used other than for general guidance. If specific dimensions are required, enquiries should be made to the sales consultant. The floor plans shown are not to scale. Measurements are based on the original drawings. Slight variations may occur during construction.

The illustrations shown are computer generated impressions of how the property may look and are indicative only. External details or finishes may vary on individual plots and homes may be built in either detached or attached styles depending on the development layout. Exact specifications, window styles and whether a property is left or right-handed may differ from plot to plot. Please speak to our sales consultant for specific plot details.

DAXM1 DS10737 / 05.24

# Linden HOMES





# The Mynster

4 bedroom home

**Mill Brook Green**

Axminster EX13 5HW | 01297 740996

[lindenhomes.co.uk](http://lindenhomes.co.uk)

**Linden**  
HOMES

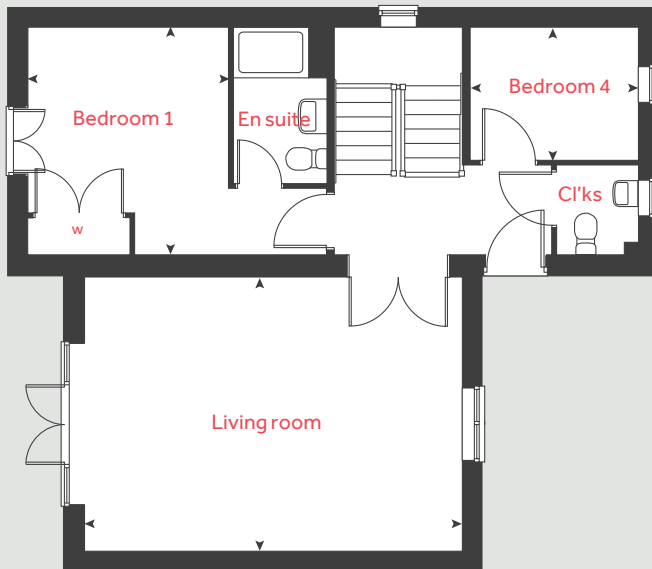
# The Mynster

4 bedroom home

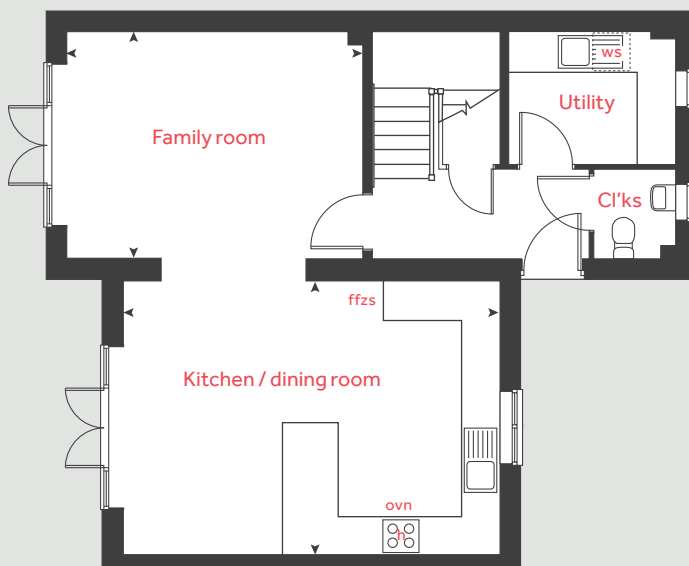
## Second floor



## First floor



## Ground floor



### Ground floor

Kitchen / dining room  
5.96m x 4.32m 19' 7" x 14' 2"

Family room  
4.68m x 3.59m 15' 5" x 11' 9"

### First floor

Bedroom 1  
3.59m x 3.16m 11' 9" x 10' 5"

Bedroom 4  
2.66m x 2.10m 8' 9" x 6' 11"

Living room  
5.96m x 4.32m 19' 7" x 14' 2"

### Second floor

Bedroom 3  
3.59m x 2.70m 11' 9" x 8' 11"

Bedroom 2  
3.59m x 2.66m 11' 9" x 8' 9"

h hob ws washing machine space  
ovn oven cup'd cupboard  
ffzs fridge freezer space < > measuring points

The floorplan has been produced for illustrative purposes only. Room sizes shown are between arrow points as indicated on plan. The dimensions have tolerances of + or -50mm and should not be used other than for general guidance. If specific dimensions are required, enquiries should be made to the sales consultant. The floor plans shown are not to scale. Measurements are based on the original drawings. Slight variations may occur during construction.

The illustrations shown are computer generated impressions of how the property may look and are indicative only. External details or finishes may vary on individual plots and homes may be built in either detached or attached styles depending on the development layout. Exact specifications, window styles and whether a property is left or right-handed may differ from plot to plot. Please speak to our sales consultant for specific plot details.

DAXM1 DS13374 / 02.25

**Linden**  
HOMES





# The Pembroke

4 bedroom home

Mill Brook Green

Axminster EX13 5HW | 01297 740996

[lindenhomes.co.uk](http://lindenhomes.co.uk)

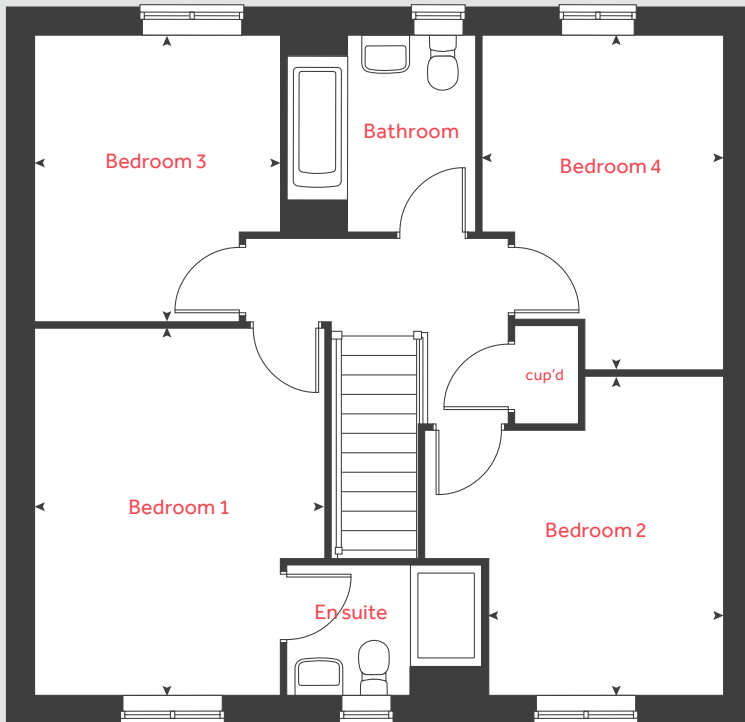
**Linden**  
HOMES



# The Pembroke

4 bedroom home

## First floor



### Ground floor

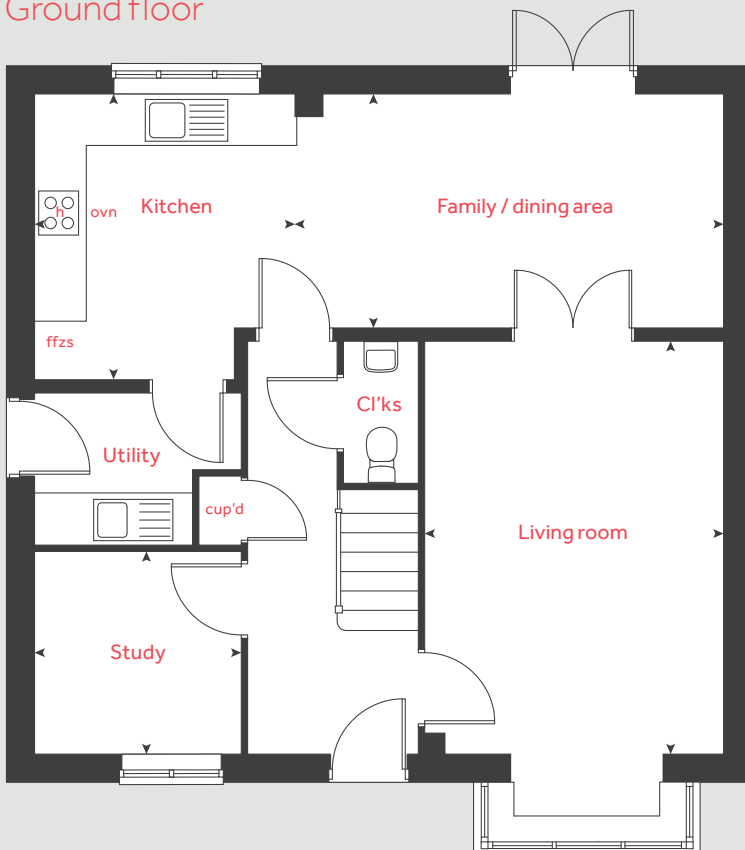
<b>Kitchen</b>	3.35m x 3.05m	11' 0" x 10' 0"
<b>Living room</b>	4.83m x 3.50m	15' 10" x 11' 6"
<b>Family / dining area</b>	5.02m x 2.75m	16' 6" x 9' 0"
<b>Study</b>	2.42m x 2.37m	7' 11" x 7' 9"

### First floor

<b>Bedroom 1</b>	4.30m x 3.40m	14' 1" x 11' 2"
<b>Bedroom 2</b>	3.72m x 2.75m	12' 3" x 9' 0"
<b>Bedroom 3</b>	3.35m x 2.87m	11' 0" x 9' 5"
<b>Bedroom 4</b>	3.92m x 2.82m	12' 11" x 9' 3"

<b>h</b>	hob	<b>cup'd</b>	cupboard
<b>ovn</b>	oven	◀ ▶	measuring points
<b>ffzs</b>	fridge freezer space		

## Ground floor



Please note, floorplans and dimensions are taken from architectural drawings and are for guidance only. Dimensions stated are within a tolerance of plus or minus 50mm. Overall dimensions are usually stated and there may be projections into these. With our continual improvement policy we constantly review our designs and specification to ensure we deliver the best products to our customers. Computer generated images not to scale. Finishes and materials may vary and landscaping is illustrative only. Kitchen layouts are indicative only and may change. To confirm specific details on our homes please see our sales consultant.

Produced by Vistry Group Design Studio.

When you have finished with this leaflet please recycle it.

DAXM1 DS05172 / 04.23

# Linden

HOMES



# The Roman

4 bedroom home

Mill Brook Green

Axminster EX13 5HW | 01297 740996

[lindenhomes.co.uk](http://lindenhomes.co.uk)

**Linden**  
HOMES

# The Roman

4 bedroom home

## Ground floor

Kitchen / family / dining area  
6.94m x 6.61m      22' 9" x 21' 8"

## First floor

Living room  
4.81m x 3.64m      15' 10" x 11' 11"

Bedroom 1  
3.82m x 3.17m      12' 6" x 10' 5"

## Second floor

Bedroom 2  
3.64m x 2.76m      11' 11" x 9' 1"

Bedroom 3  
3.34m x 3.19m      11' 0" x 10' 6"

Bedroom 4  
3.19m x 2.55m      10' 6" x 8' 4"

h                      hob      w                      wardrobe  
ovn                    oven      cup'd                  cupboard  
ffzs                  fridge freezer space      < >                  measuring points

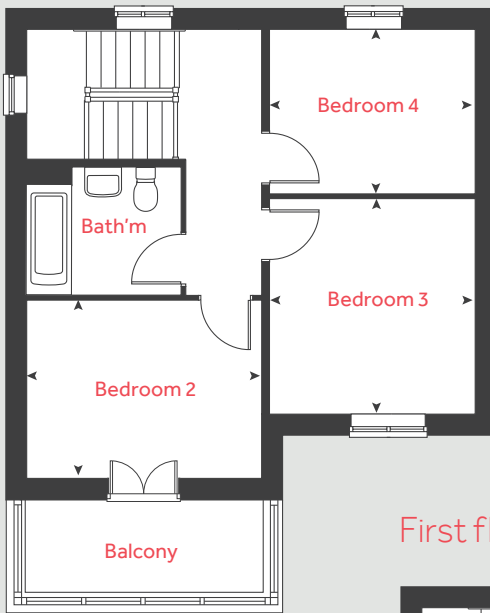
Please note, floorplans and dimensions are taken from architectural drawings and are for guidance only. Dimensions stated are within a tolerance of plus or minus 50mm. Overall dimensions are usually stated and there may be projections into these. With our continual improvement policy we constantly review our designs and specification to ensure we deliver the best products to our customers. Computer generated images not to scale. Finishes and materials may vary and landscaping is illustrative only. Kitchen layouts are indicative only and may change. To confirm specific details on our homes please see our sales consultant.

Produced by Vistry Group Design Studio.

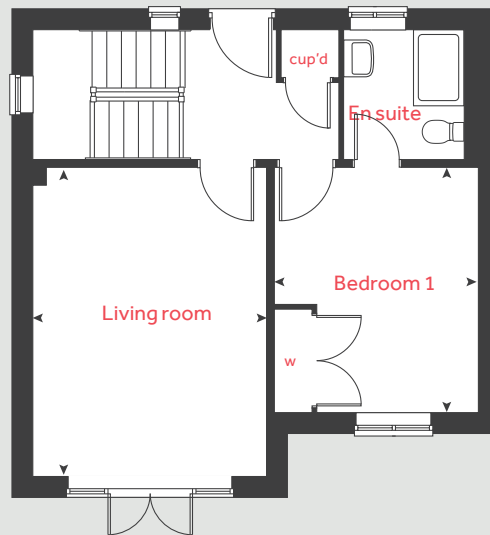
When you have finished with this leaflet please recycle it.

DAXM1 DS05172 / 04.23

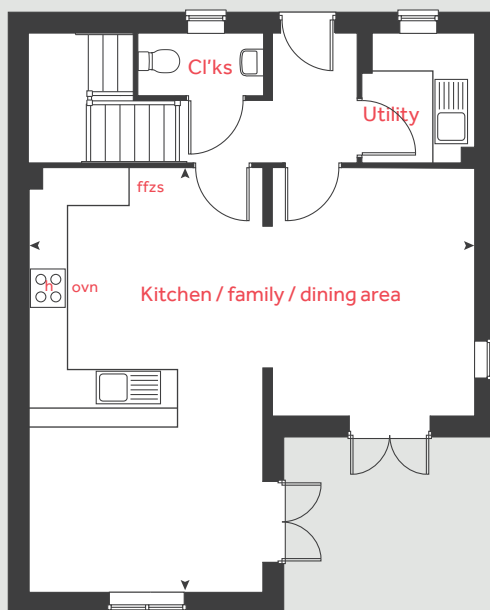
## Second floor



## First floor



## Ground floor



**Linden**  
HOMES



# Mill Brook Green

## Axminster

Use this guide to see what features are included in your new home. Your sales consultant will be happy to discuss the **Enhance** range of extras available.



- 1 bedroom**  
The Weycroft
- 2 bedroom**  
The Harcourt  
The Ashbee
- 3 bedroom**  
The Emmett  
The Eveleigh  
The Mountford  
The Beckett
- 4 bedroom**  
The Buckland  
The Mynster  
The Roman  
The Mlyne  
The Pembroke

### Kitchen

Moores fitted kitchen with laminate worktop	■	■	■	■	■	■	■	■
Stainless steel sink and drainer (single bowl) with chrome mixer tap	■	■	■	■	■	■	■	■
Stainless steel sink and drainer (single bowl) with chrome mixer tap in utility					■	■		■
Indesit hob (60cm) with Indesit built-in single oven, with stainless steel splashback and integrated silver hood	■	■	■	■	■	■		
Indesit hob (60 cm) with built-in single oven, with stainless steel splashback and 60cm stainless steel chimney hood							■	■
Fridge / freezer space	■	■	■	■	■	■	■	■
Space for integrated dishwasher with plumbing and electrics		■	■	■	■	■	■	■
Space for washing machine with plumbing and electrics in utility					■	■		■
Space for washing machine with plumbing and electrics in kitchen	■	■	■	■			■	

### Bathrooms and en suite(s)

Ideal Standard contemporary white Tempo Arc sanitary ware suite	■	■	■	■	■	■	■	■
Ideal Standard close coupled WC to cloakroom		■	■	■	■	■	■	■
Ideal Standard low profile shower tray with glass enclosure in en suite		■	■	■	■	■	■	■
Handheld hair wash attachment in bathroom		■	■	■	■	■	■	■
Shower over the bath	■	■						
Choice of Standard Porcelanosa wall tiling (splashback, half-height over bath and full-height to shower cubicle)*	■	■	■	■	■	■	■	■
Radiator in bathroom / en suite	■	■	■	■	■	■	■	■

### Doors and Windows

Front door with multi-point security locking system and security chain	■	■	■	■	■	■	■	■
Front door number - chrome plated door numeral	■	■	■	■	■	■	■	■

### Doors and Windows

PVCu double glazing to windows	■	■	■	■	■	■	■	■
Double glazed PVCu French doors		■						
Internal doors to be ladder door style pre-primed with Brass Satin finish handles	■	■	■	■	■	■	■	■
Paving outside French / bi-fold door and path to garage personnel door (where applicable)		■						

### General

White painted walls and smooth white ceilings	■	■	■	■	■	■	■	■
TV point to lounge and family room (where applicable)	■	■	■	■	■	■	■	■
Master telephone socket (plus to study where shown)	■	■	■	■	■	■	■	■
Ideal combi-boiler with honeywell heating control and room thermostat(s)	■	■	■	■	■	■	■	■
Thermostatic valves to all radiators (with the exception of rooms with separate thermostat control)	■	■	■	■	■	■	■	■
Contemporary lantern to front door and wiring only to the rear door		■	■	■	■	■	■	■
Mains wired smoke detectors with battery back-up	■	■	■	■	■	■	■	■
Battery powered Carbon Monoxide detector (wall mounted) to be provided for each floor	■	■	■	■	■	■	■	■
Power and lighting to garage (where in curtilage of the plot)		■	■	■	■	■	■	■
Enclosed fenced rear garden, and garden gate (where applicable)		■	■	■	■	■	■	■
NHBC Buildmark cover	■	■	■	■	■	■	■	■
First two years' customer service support from Linden Homes	■	■	■	■	■	■	■	■

■ Fitted as standard - included in the property  
\* Subject to stage of construction



# 2 bedroom Sage Home

Home 114



built  
by

Linden  
HOMES

# 2 bedroom Sage Home

## Home 114

Ground floor	metres	feet / inches
Kitchen / sitting / dining area	6.93 x 6.04	22' 8" x 19' 9"
Bedroom 1	3.97 x 2.90	13' 1" x 9' 6"
Bedroom 2	2.90 x 2.58	9' 6" x 8' 6"

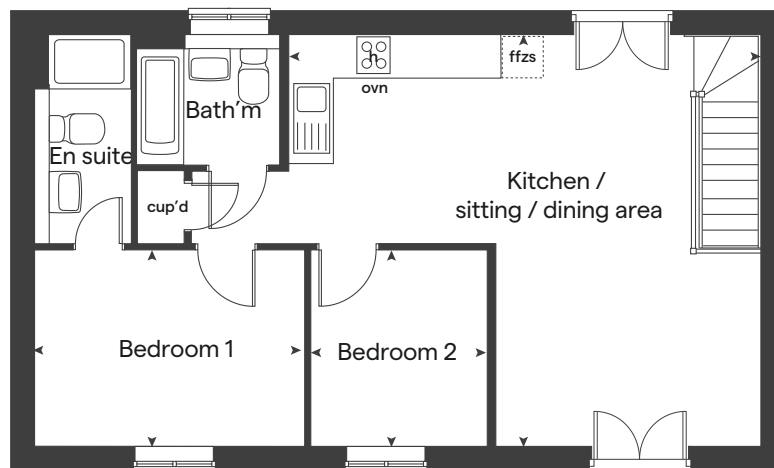
ovn	oven	cup'd	cupboard
h	hob	◀ ▶	measuring points
ffzs	fridge freezer space		

The floorplan has been produced for illustrative purposes only. Room sizes shown are between arrow points as indicated on plan. The dimensions have tolerances of + or -50mm and should not be used other than for general guidance. If specific dimensions are required, enquiries should be made to the sales consultant. The floor plans shown are not to scale. Measurements are based on the original drawings. Slight variations may occur during construction.

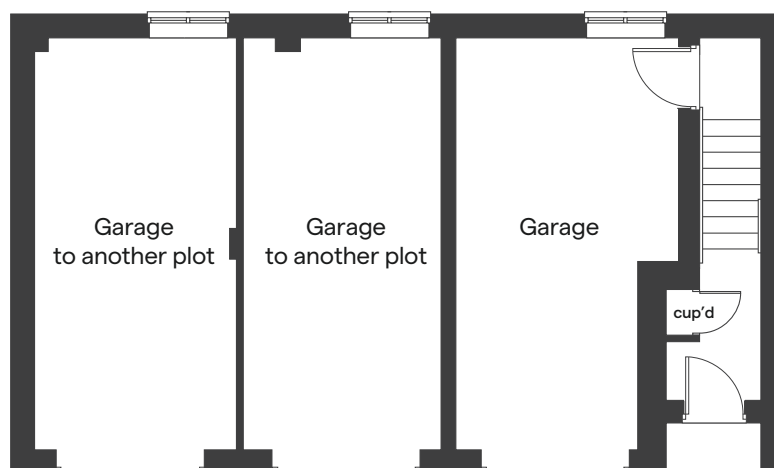
The illustrations shown are computer generated impressions of how the property may look and are indicative only. External details or finishes may vary on individual plots and homes may be built in either detached or attached styles depending on the development layout. Exact specifications, window styles and whether a property is left or right handed may differ from plot to plot. Please speak to our sales consultant for specific plot details.

Produced by the Vistry Group Design Studio.  
When you have finished with this leaflet please recycle it.  
DAXM1 DS09872 / 05.24

## First floor



## Ground floor



built by

**Linden**  
HOMES





## 2 bedroom Sage Home

Homes 227, 228 & 229



Sage  
Homes

built  
by

Linden  
HOMES

# 2 bedroom Sage Home

Homes 227, 228  
& 229

Ground floor	metres	feet / inches
Kitchen	2.94 x 2.01	9' 9" x 6' 7"
Dining area	2.01 x 1.59	6' 7" x 5' 3"
Living room	4.08 x 2.75	13' 5" x 9' 1"

## First floor

Bedroom 1	4.08 x 2.84	13' 5" x 9' 4"
Bedroom 2	4.08 x 2.41	13' 5" x 7' 11"

ovn	oven	cup'd	cupboard
h	hob	◀ ▶	measuring points
ffzs	fridge freezer space		

The floorplan has been produced for illustrative purposes only. Room sizes shown are between arrow points as indicated on plan. The dimensions have tolerances of + or -50mm and should not be used other than for general guidance. If specific dimensions are required, enquiries should be made to the sales consultant. The floor plans shown are not to scale. Measurements are based on the original drawings. Slight variations may occur during construction.

The illustrations shown are computer generated impressions of how the property may look and are indicative only. External details or finishes may vary on individual plots and homes may be built in either detached or attached styles depending on the development layout. Exact specifications, window styles and whether a property is left or right handed may differ from plot to plot. Please speak to our sales consultant for specific plot details.

Produced by the Vistry Group Design Studio.

When you have finished with this leaflet please recycle it.

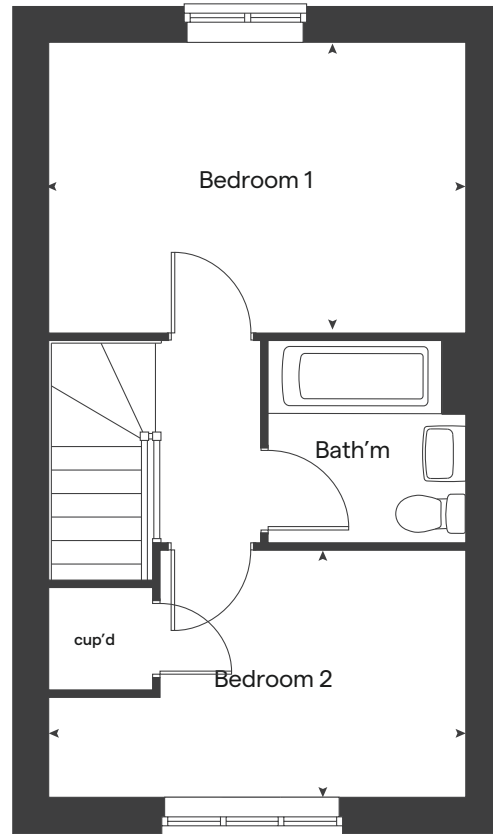
DAXM1 DS09872 / 05.24



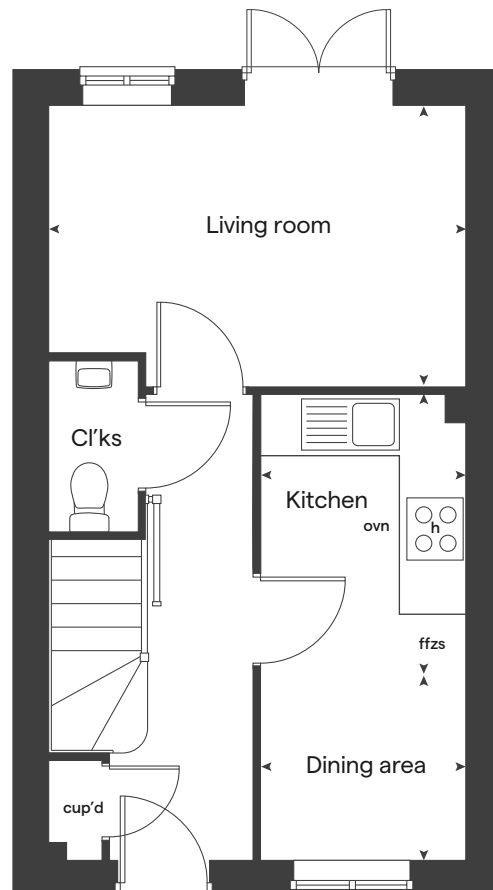
built by

**Linden**  
HOMES

## First floor



## Ground floor







## 3 bedroom Sage Home

Homes 231, 232, 233, 234 & 235



built  
by

Linden  
HOMES



# 3 bedroom Sage Home

Homes 231, 232,  
233, 234 & 235

Ground floor	metres	feet / inches
Kitchen / dining room	4.75 x 2.96	15' 7" x 9' 9"
Living room	4.35 x 3.78	14' 4" x 12' 5"

## First floor

Bedroom 1	3.68 x 2.69	12' 1" x 8' 10"
Bedroom 2	2.68 x 2.37	8' 9" x 7' 9"
Bedroom 3	2.37 x 2.00	7' 9" x 6' 7"

ovn	oven	cup'd	cupboard
h	hob	< >	measuring points
ffzs	fridge freezer space		

The floorplan has been produced for illustrative purposes only. Room sizes shown are between arrow points as indicated on plan. The dimensions have tolerances of + or -50mm and should not be used other than for general guidance. If specific dimensions are required, enquiries should be made to the sales consultant.

The floor plans shown are not to scale. Measurements are based on the original drawings. Slight variations may occur during construction.

The illustrations shown are computer generated impressions of how the property may look and are indicative only. External details or finishes may vary on individual plots and homes may be built in either detached or attached styles depending on the development layout. Exact specifications, window styles and whether a property is left or right handed may differ from plot to plot. Please speak to our sales consultant for specific plot details.

Produced by the Vistry Group Design Studio.

When you have finished with this leaflet please recycle it.

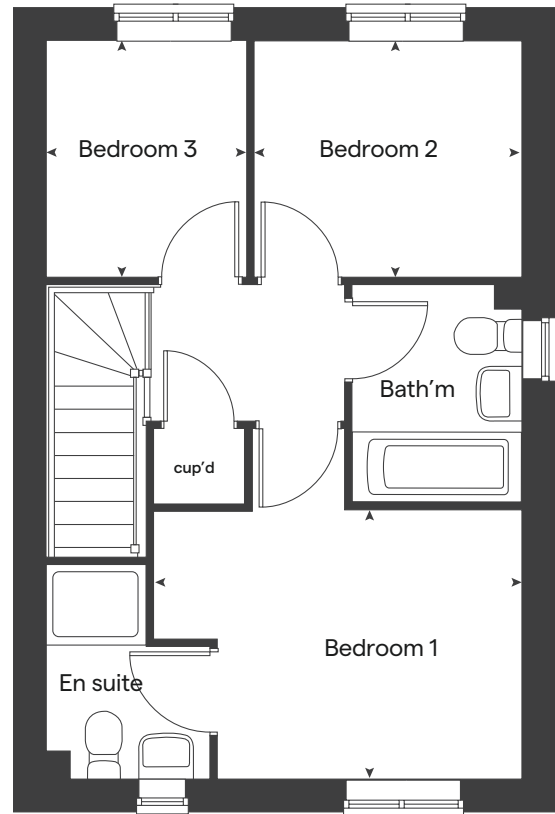
DAXM1 DS09872 / 05.24



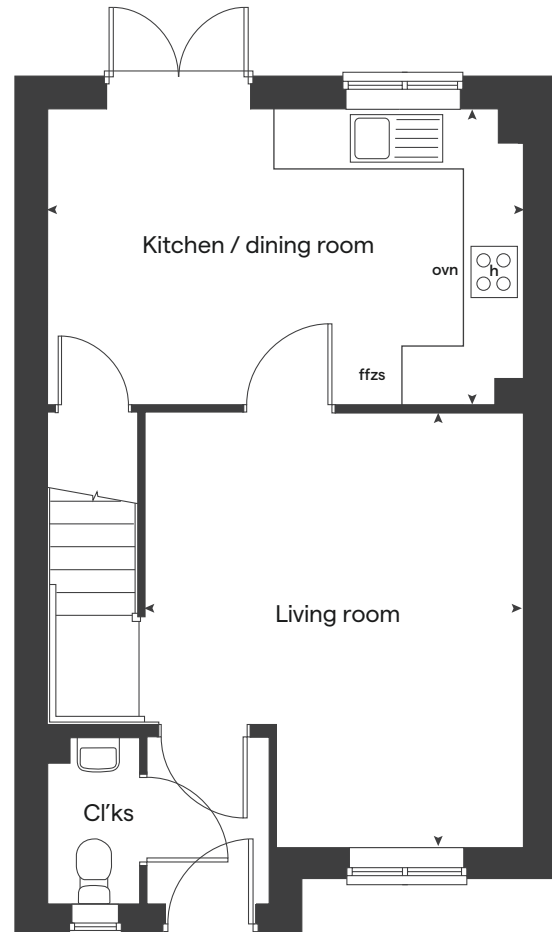
built by

**Linden**  
HOMES

## First floor



## Ground floor





## 3 bedroom Sage Home

Homes 117, 223, 224, 225 & 226



built  
by

Linden  
HOMES

# 3 bedroom Sage Home

Homes 117, 223,  
224, 225 & 226

Ground floor	metres	feet / inches
Kitchen / dining area	4.78 x 2.80	15' 8" x 9' 2"
Living room	4.98 x 3.20	16' 4" x 10' 6"

## First floor

Bedroom 1	2.78 x 2.72	9' 2" x 8' 11"
Bedroom 2	2.90 x 2.78	9' 6" x 9' 2"
Bedroom 3	3.20 x 2.12	10' 6" x 7' 0"

ovn	oven	cup'd	cupboard
h	hob	◀ ▶	measuring points
ffzs	fridge freezer space		

The floorplan has been produced for illustrative purposes only. Room sizes shown are between arrow points as indicated on plan. The dimensions have tolerances of + or -50mm and should not be used other than for general guidance. If specific dimensions are required, enquiries should be made to the sales consultant.

The floor plans shown are not to scale. Measurements are based on the original drawings. Slight variations may occur during construction.

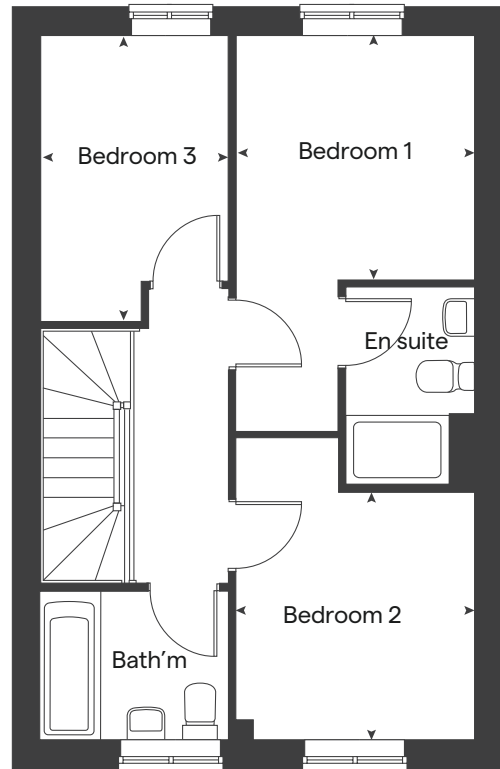
The illustrations shown are computer generated impressions of how the property may look and are indicative only. External details or finishes may vary on individual plots and homes may be built in either detached or attached styles depending on the development layout. Exact specifications, window styles and whether a property is left or right handed may differ from plot to plot. Please speak to our sales consultant for specific plot details.

Produced by the Vistry Group Design Studio.

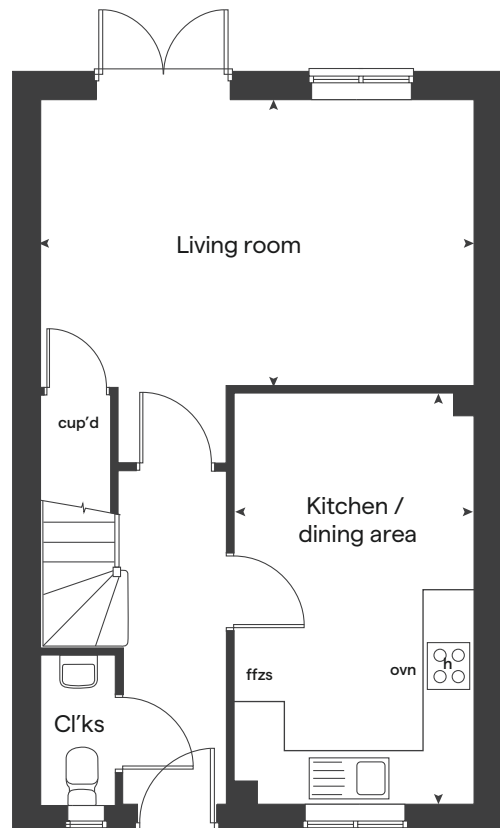
When you have finished with this leaflet please recycle it.

DAXM1 DS09872 / 05.24

## First floor



## Ground floor



built by

**Linden**  
HOMES





# 3 bedroom Sage Home

Homes 115 & 118



built  
by

Linden  
HOMES

# 3 bedroom Sage Home

## Homes 115 & 118

Ground floor	metres	feet / inches
Kitchen / dining area	5.59 x 2.70	18' 4" x 8' 10"
Living room	5.59 x 3.11	18' 4" x 10' 3"

### First floor

Bedroom 1	3.36 x 3.19	11' 1" x 10' 6"
Bedroom 2	3.15 x 2.75	10' 4" x 9' 0"
Bedroom 3	2.76 x 2.76	9' 1" x 9' 1"

ovn	oven	cup'd	cupboard
h	hob	< >	measuring points
ffzs	fridge freezer space		

The floorplan has been produced for illustrative purposes only. Room sizes shown are between arrow points as indicated on plan. The dimensions have tolerances of + or -50mm and should not be used other than for general guidance. If specific dimensions are required, enquiries should be made to the sales consultant.

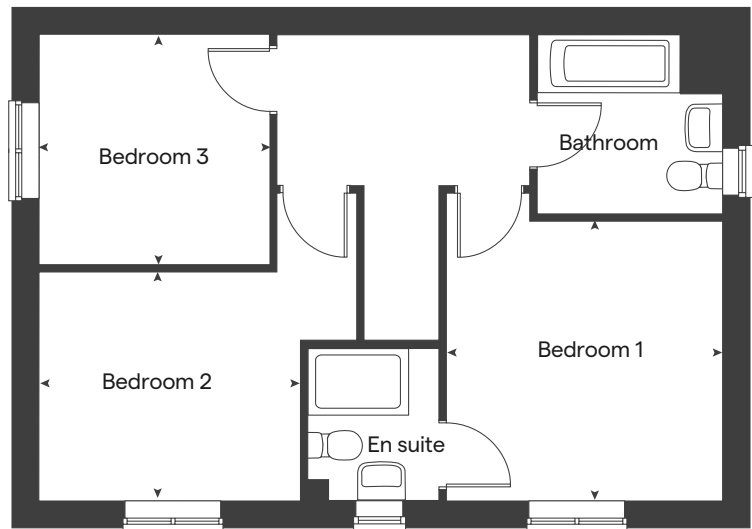
The floor plans shown are not to scale. Measurements are based on the original drawings. Slight variations may occur during construction.

The illustrations shown are computer generated impressions of how the property may look and are indicative only. External details or finishes may vary on individual plots and homes may be built in either detached or attached styles depending on the development layout. Exact specifications, window styles and whether a property is left or right handed may differ from plot to plot. Please speak to our sales consultant for specific plot details.

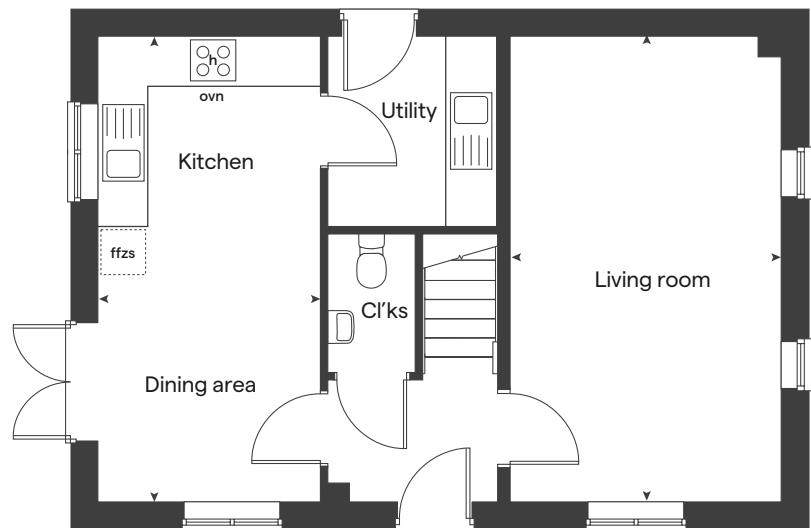
Produced by the Vistry Group Design Studio.

When you have finished with this leaflet please recycle it.  
DAXM1 DS09872 / 05.24

### First floor



### Ground floor



built by

**Linden**  
HOMES





# 4 bedroom Sage Home

Homes 213 & 221



built  
by

Linden  
HOMES



# 4 bedroom Sage Home

## Homes 213 & 221

### Ground floor

	metres	feet / inches
Kitchen / dining / family area	6.04 x 3.75	19' 10" x 12' 4"
Living room	4.83 x 3.39	15' 10" x 11' 2"

### First floor

	metres	feet / inches
Bedroom 1	3.93 x 2.86	12' 11" x 9' 5"
Bedroom 2	3.20 x 2.56	10' 6" x 8' 5"
Bedroom 3	3.39 x 2.20	11' 2" x 7' 3"
Bedroom 4	3.10 x 2.10	10' 2" x 6' 11"

ovn	oven	cup'd	cupboard
h	hob	◀ ▶	measuring points
ffzs	fridge freezer space		

The floorplan has been produced for illustrative purposes only. Room sizes shown are between arrow points as indicated on plan. The dimensions have tolerances of + or -50mm and should not be used other than for general guidance. If specific dimensions are required, enquiries should be made to the sales consultant. The floor plans shown are not to scale. Measurements are based on the original drawings. Slight variations may occur during construction.

The illustrations shown are computer generated impressions of how the property may look and are indicative only. External details or finishes may vary on individual plots and homes may be built in either detached or attached styles depending on the development layout. Exact specifications, window styles and whether a property is left or right handed may differ from plot to plot. Please speak to our sales consultant for specific plot details.

Produced by the Vistry Group Design Studio.

When you have finished with this leaflet please recycle it.

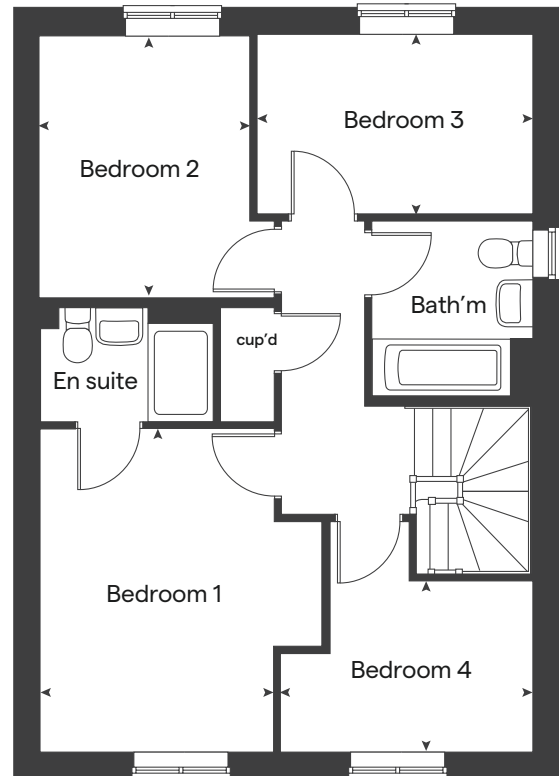
DAXM1 DS10737 / 05.24



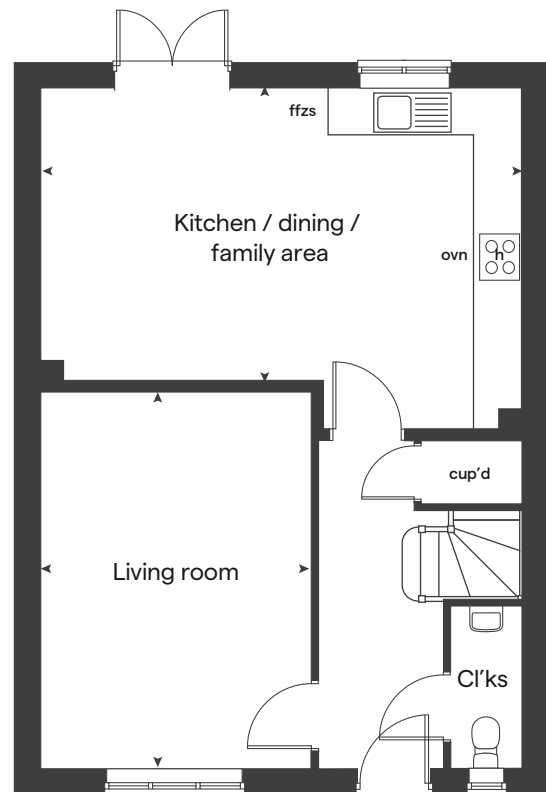
built by

# Linden HOMES

### First floor



### Ground floor



# Mill Brook Green

## Axminster

Use this guide to see what features are included in your new home.



### Kitchen

**2 bedroom**  
Homes 227, 228 & 229  
Home 114

**3 bedroom**  
Homes 231, 232, 233, 234 & 235  
Homes 117, 223, 224, 225 & 226  
Homes 115 & 118

**4 bedroom**  
Homes 213 & 221

Symphony Konzept range kitchen with laminate worktop	■	■	■	■	■
Stainless steel sink and drainer (single bowl) with chrome mixer tap	■	■	■	■	■
Stainless steel sink and drainer (single bowl) with chrome mixer tap in utility				■	
Indesit hob (60cm) with Indesit built-in single under oven, with stainless steel splashback and integrated silver hood	■	■	■	■	
Indesit hob (60 cm) with built-in single under oven, with stainless steel splashback and 60cm stainless steel chimney hood					■
White pendant light holder	■	■	■	■	■
Fridge / freezer space	■	■	■	■	■
Space for integrated dishwasher with plumbing and electrics	■	■	■	■	■
Space for washing machine with plumbing and electrics in kitchen	■	■	■	■	■
Space for washing machine with plumbing and electrics in utility			■		

### Bathrooms and en suite(s)

Ideal Standard contemporary white Tempo sanitary ware	■	■	■	■	■
Ideal Standard close coupled WC to cloakroom	■		■	■	■
Ideal Standard low profile shower tray with glass enclosure in en suite		■	■	■	■
Handheld hair wash attachment in bathroom		■	■	■	■
Shower over the bath	■				
Choice of standard Porcelanosa wall tiling (splashback, 450mm height over bath, and full-height to shower cubicle)*	■	■	■	■	■
White batten light holder	■	■	■	■	■

■ Fitted as standard - included in the property  
\* Subject to stage of construction

### Doors and Windows

Front door with multi-point security locking system and security chain	■	■	■	■	■
PVCu double glazing to windows	■	■	■	■	■
Double glazed PVCu French doors	■		■	■	■
Internal doors to be ladder door style pre-primed with Brass Satin finish handles	■	■	■	■	■
Paving outside French / bi-fold door and path to garage personnel door (where applicable)	■	■	■	■	■

### General

White painted walls and smooth white ceilings	■	■	■	■	■
TV point to lounge and family room (where applicable)	■	■	■	■	■
Master telephone socket to lounge and study where applicable	■	■	■	■	■
Ideal combi-boiler with Honeywell heating control and room thermostat(s)	■	■	■	■	■
Thermostatic valves to all radiators (with the exception of rooms with separate thermostat control)	■	■	■	■	■
Contemporary lantern to front door and wiring only to the rear door	■	■	■	■	■
Mains wired smoke detectors with battery back-up to each floor (where applicable)	■	■	■	■	■
Battery powered Carbon Monoxide detector (wall mounted) to be provided to ground floor	■	■	■	■	■
Power and lighting to garage where in curtilage of the plot (where applicable)		■	■	■	■
Enclosed fenced rear garden, and garden gate (where applicable)	■	■	■	■	■
NHBC Buildmark choice cover	■	■	■	■	■
First two years' customer service support from Linden Homes	■	■	■	■	■

**2 bedroom**  
Homes 227, 228 & 229  
Home 114

**3 bedroom**  
Homes 231, 232, 233, 234 & 235  
Homes 117, 223, 224, 225 & 226  
Homes 115 & 118

**4 bedroom**  
Homes 213 & 221