



# Twigworth Green Twigworth

[lindenhomes.co.uk](https://www.lindenhomes.co.uk)



**Linden**  
HOMES





# Twigworth Green Twigworth

A collection of 3 and 4 bedroom homes in a beautiful village

This exciting new development is in the Gloucestershire village of Twigworth, within easy reach of the historic cathedral city of Gloucester.

The development will include convenience store, bakery and cafe. Gloucester also offers an array of independent and high street retailers and a farmers' market.

Historic Gloucester, the pretty riverside town of Tewkesbury and Regency Cheltenham are all close by. There are also countryside

walks in the area, including the Gloucestershire Way and Cotswolds Area of Outstanding Natural Beauty.

Parents will be pleased to find a good selection of schools for all ages nearby.

Twigworth Green is just off the A38 giving access to Gloucester, Tewkesbury, Cheltenham and the M5. Gloucester train station offers connections to London Paddington, Bristol, Worcester, Swindon and Cardiff.

## Twigworth Green

Tewkesbury Road, Twigworth GL2 9PQ | **01452 402 751**

[lindenhomes.co.uk](http://lindenhomes.co.uk)

**Linden**  
HOMES

Scan me  
for directions



# Twigworth Green

Tewkesbury Road, Twigworth,  
Gloucestershire GL2 9PQ

## From Tewkesbury

- Head south on the A38 Gloucester Road
- At the roundabout take the second exit
- Continue on the A38 for approximately 6 miles
- On entering Twigworth continue for another mile
- Twigworth Green will be found at the roundabout on your left

## From Gloucester

- Leave Gloucester on Black Dog Way
- At the roundabout continue onto the A38 Tewkesbury Road
- At the next roundabout take the second exit
- Continue on the A38 Tewkesbury Road for approximately one mile
- On entering Twigworth pass St Matthew's Church
- Twigworth Green will be found at the roundabout on your right

Cover photograph of local countryside. Not view from the development. The streetscene has been produced for illustrative purposes only, please check the details of the homes you are interested in with the sales consultant.

Linden homes Limited, Countryside Partnerships South West region  
Camberwell House, Grenaider Road, Exeter Business Park, Exeter, Devon EX1 3QF. Telephone: 0800 9755 946.

Produced by the Vistry Group Design Studio.

When you have finished with this leaflet please recycle it.

WTWIG DS06179 / 06.23

**Linden**  
HOMES





# The Wren

3 bedroom home

**Twigworth Green**

Twigworth, Gloucestershire GL2 9GT | 01452 402751

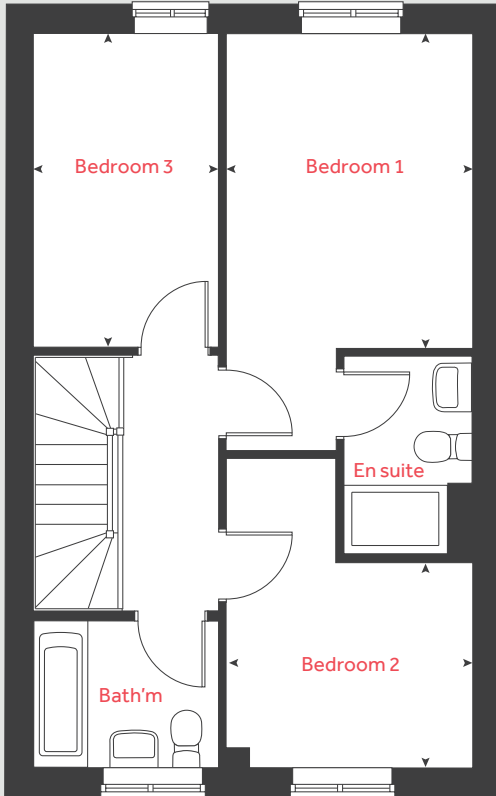
[lindenhomes.co.uk](https://www.lindenhomes.co.uk)

**Linden**  
HOMES

# The Wren

## 3 bedroom home

### First floor



Ground floor	metres	feet / inches
Kitchen	2.91 x 2.50	9' 7" x 8' 3"
Living / dining area	6.01 x 5.09	19' 9" x 16' 9"

### First floor

Bedroom 1	3.66 x 2.86	12' 0" x 9' 4"
Bedroom 2	2.85 x 2.37	9' 4" x 7' 9"
Bedroom 3	3.65 x 2.15	11' 11" x 7' 1"

h	hob	ws	washing machine space
ovn	oven	cup'd	cupboard
ffzs	fridge freezer space	◀ ▶	measuring points
ds	dishwasher space		

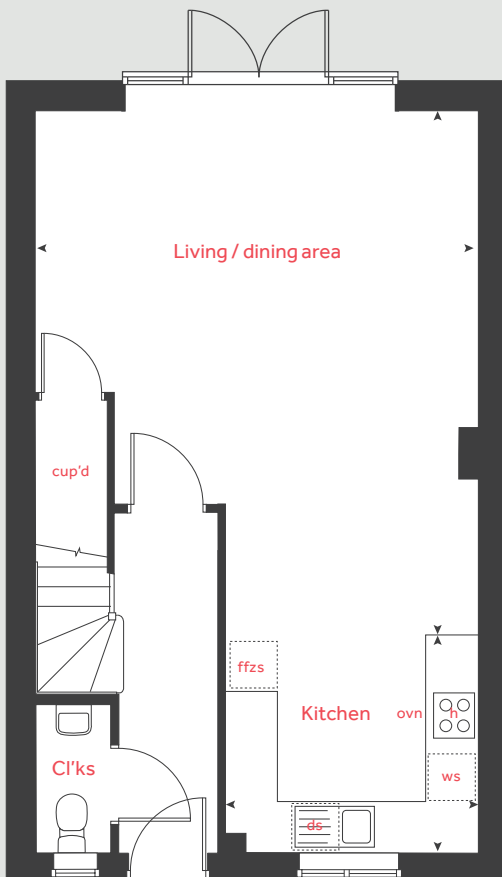
### The Wren | Twigworth Green |

The floorplan has been produced for illustrative purposes only. Room sizes shown are between arrow points as indicated on plan. The dimensions have tolerances of + or -50mm and should not be used other than for general guidance. If specific dimensions are required, enquiries should be made to the sales consultant. The floor plans shown are not to scale. Measurements are based on the original drawings. Slight variations may occur during construction.

The illustrations shown are computer generated impressions of how the property may look and are indicative only. External details or finishes may vary on individual plots and homes may be built in either detached or attached styles depending on the development layout. Exact specifications, window styles and whether a property is left or right-handed may differ from plot to plot. Please speak to our sales consultant for specific plot details.

Produced by Vistry Group Design Studio.  
When you have finished with this leaflet please recycle it.  
130-TWIG DS12694 / 11.24

### Ground floor



**Linden**  
HOMES





# The Dove

4 bedroom home

**Twigworth Green**

Twigworth, Gloucestershire GL2 9GT | 01452 402751

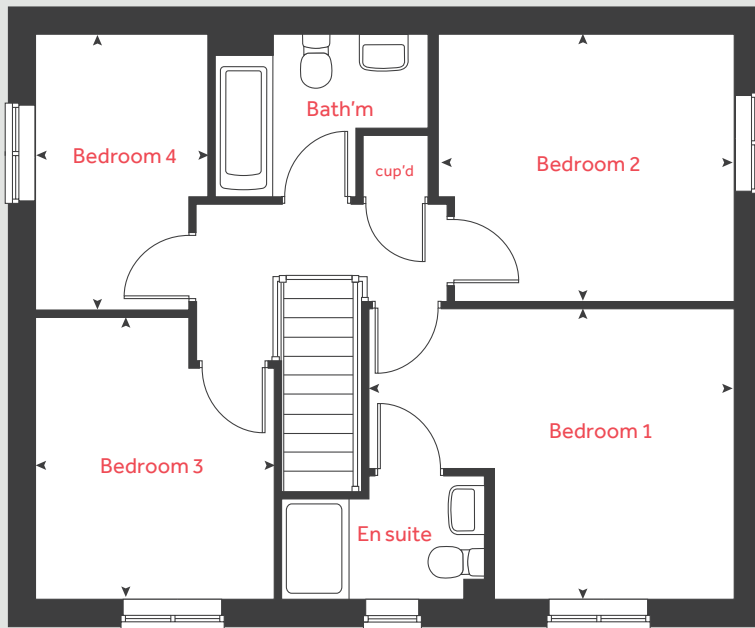
[lindenhomes.co.uk](http://lindenhomes.co.uk)

**Linden**  
HOMES

# The Dove

## 4 bedroom home

### First floor



Ground floor	metres	feet / inches
Kitchen	3.24 x 2.80	10' 7" x 9' 2"
Living room	4.81 x 3.39	15' 9" x 11' 1"
Dining area	3.91 x 2.81	12' 10" x 9' 2"
Study	3.39 x 1.82	11' 1" x 5' 11"

First floor	metres	feet / inches
Bedroom 1	4.40 x 3.49	14' 5" x 11' 5"
Bedroom 2	3.59 x 3.15	11' 9" x 10' 4"
Bedroom 3	3.38 x 2.88	11' 1" x 9' 5"
Bedroom 4	3.26 x 2.08	10' 8" x 6' 10"

h	hob	ws	washing machine space
ovn	oven	cup'd	cupboard
ffzs	fridge freezer space	◀ ▶	measuring points
ds	dishwasher space		

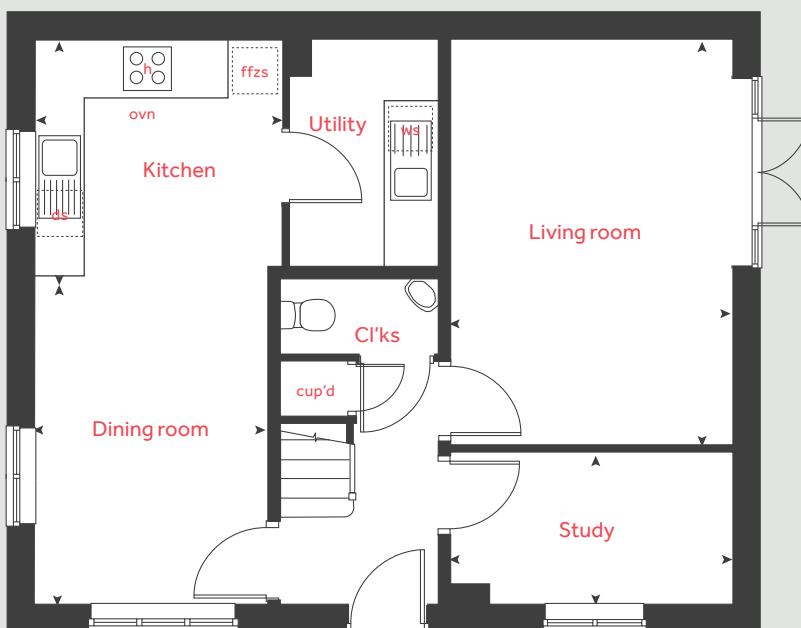
### The Dove | Twigworth Green |

The floorplan has been produced for illustrative purposes only. Room sizes shown are between arrow points as indicated on plan. The dimensions have tolerances of + or -50mm and should not be used other than for general guidance. If specific dimensions are required, enquiries should be made to the sales consultant. The floor plans shown are not to scale. Measurements are based on the original drawings. Slight variations may occur during construction.

The illustrations shown are computer generated impressions of how the property may look and are indicative only. External details or finishes may vary on individual plots and homes may be built in either detached or attached styles depending on the development layout. Exact specifications, window styles and whether a property is left or right-handed may differ from plot to plot. Please speak to our sales consultant for specific plot details.

Produced by Vistry Group Design Studio.  
When you have finished with this leaflet please recycle it.  
130-TWIG DS12694 / 11.24

### Ground floor



# Linden

## HOMES





# The Kestrel

4 bedroom home

**Twigworth Green**

Twigworth, Gloucestershire GL2 9GT | 01452 402751

[lindenhomes.co.uk](http://lindenhomes.co.uk)

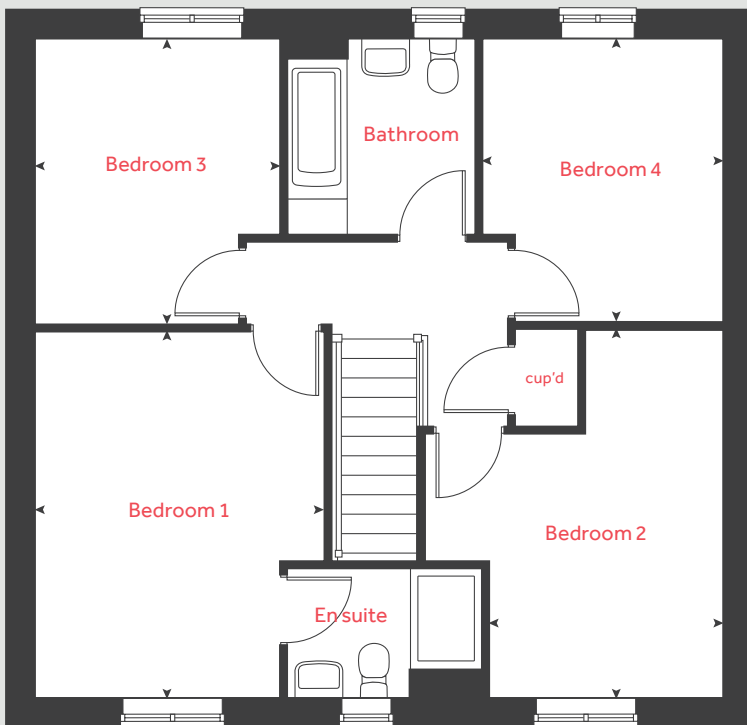
**Linden**  
HOMES



# The Kestrel

4 bedroom home

## First floor



Ground floor	metres	feet / inches
Kitchen / dining / family area	8.07 x 3.36	26' 6" x 11' 0"
Living room	4.83 x 3.48	15' 10" x 11' 5"
Study	2.40 x 2.35	7' 11" x 7' 9"

First floor	metres	feet / inches
Bedroom 1	4.29 x 3.38	14' 1" x 11' 1"
Bedroom 2	4.31 x 2.73	14' 2" x 9' 0"
Bedroom 3	3.35 x 2.87	11' 0" x 9' 5"
Bedroom 4	3.32 x 2.81	10' 11" x 9' 3"

h	hob	ts	tumble dryer space
ovn	oven	ws	washing machine space
ffzs	fridge freezer space	cup'd	cupboard
ds	dishwasher space	◀ ▶	measuring points

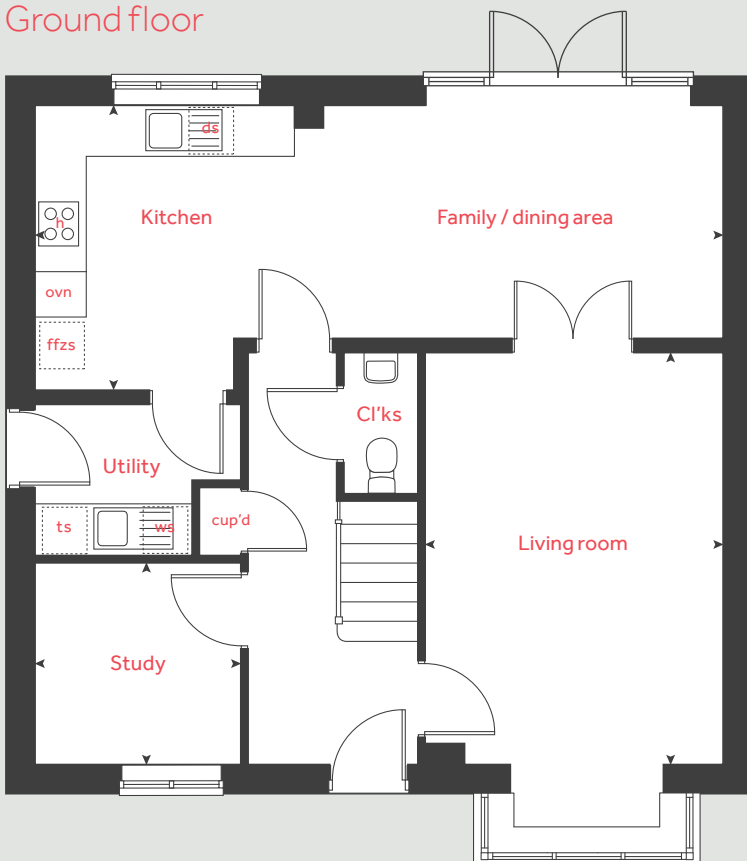
### The Kestrel | Twigworth Green |

The floorplan has been produced for illustrative purposes only. Room sizes shown are between arrow points as indicated on plan. The dimensions have tolerances of + or -50mm and should not be used other than for general guidance. If specific dimensions are required, enquiries should be made to the sales consultant. The floor plans shown are not to scale. Measurements are based on the original drawings. Slight variations may occur during construction.

The illustrations shown are computer generated impressions of how the property may look and are indicative only. External details or finishes may vary on individual plots and homes may be built in either detached or attached styles depending on the development layout. Exact specifications, window styles and whether a property is left or right-handed may differ from plot to plot. Please speak to our sales consultant for specific plot details.

Produced by Vistry Group Design Studio.  
When you have finished with this leaflet please recycle it.  
130-TWIG DS12694 / 11.24

## Ground floor



**Linden**  
HOMES



# The Osprey

4 bedroom home

**Twigworth Green**

Twigworth, Gloucestershire GL2 9GT | 01452 402751

[lindenhomes.co.uk](https://www.lindenhomes.co.uk)

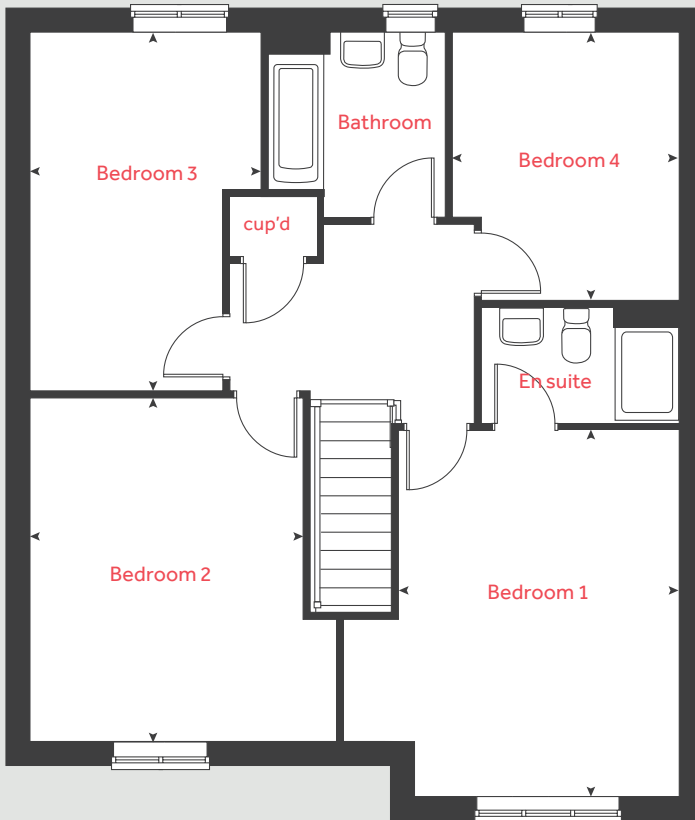
**Linden**  
HOMES



# The Osprey

4 bedroom home

## First floor



Ground floor	metres	feet / inches
Kitchen	4.45 x 3.05	14' 7" x 10' 0"
Dining / family area	5.02 x 3.85	16' 5" x 12' 8"
Living room	5.51 x 3.48	18' 1" x 11' 5"

First floor	metres	feet / inches
Bedroom 1	4.55 x 3.48	14' 11" x 11' 5"
Bedroom 2	4.28 x 3.39	14' 1" x 11' 1"
Bedroom 3	4.46 x 2.87	14' 8" x 9' 5"
Bedroom 4	3.33 x 2.81	10' 11" x 9' 3"

h	hob	ws	washing machine space
ovn	oven	cup'd	cupboard
ffzs	fridge freezer space	◀ ▶	measuring points
ds	dishwasher space		

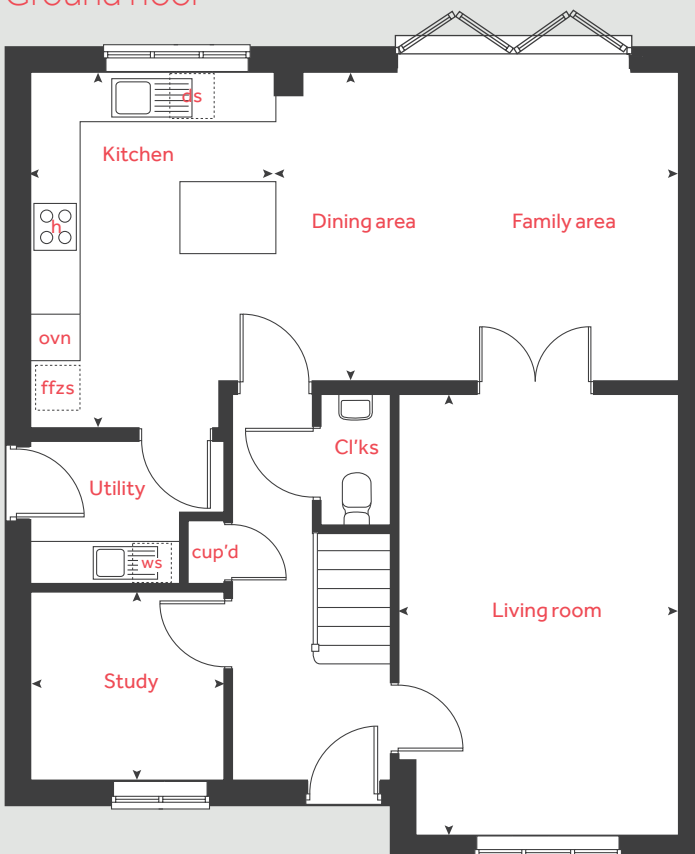
### The Osprey | Twigworth Green |

The floorplan has been produced for illustrative purposes only. Room sizes shown are between arrow points as indicated on plan. The dimensions have tolerances of + or - 50mm and should not be used other than for general guidance. If specific dimensions are required, enquiries should be made to the sales consultant. The floor plans shown are not to scale. Measurements are based on the original drawings. Slight variations may occur during construction.

The illustrations shown are computer generated impressions of how the property may look and are indicative only. External details or finishes may vary on individual plots and homes may be built in either detached or attached styles depending on the development layout. Exact specifications, window styles and whether a property is left or right-handed may differ from plot to plot. Please speak to our sales consultant for specific plot details.

Produced by Vistry Group Design Studio.  
When you have finished with this leaflet please recycle it.  
130-TWIG DS12694 / 11.24

## Ground floor



**Linden**  
HOMES



# The Raven

4 bedroom home

**Twigworth Green**

Twigworth, Gloucestershire GL2 9GT | 01452 402751

[lindenhomes.co.uk](http://lindenhomes.co.uk)

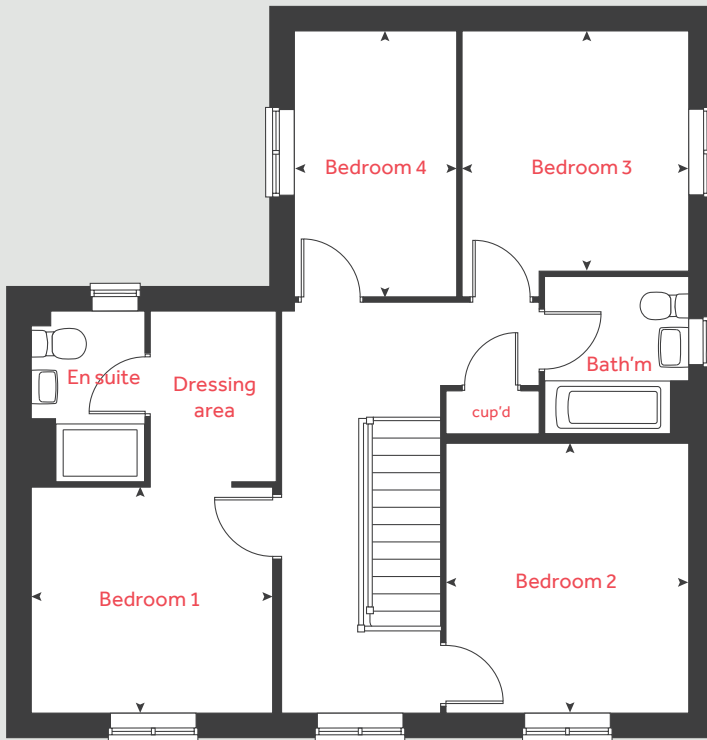
**Linden**  
HOMES



# The Raven

## 4 bedroom home

### First floor



Ground floor	metres	feet / inches
Kitchen / dining area	5.25 x 3.20	17' 2" x 10' 5"
Living room	5.36 x 3.22	17' 7" x 10' 7"
Family room	3.93 x 3.21	12' 11" x 10' 7"

### First floor

Bedroom 1	3.20 x 2.98	10' 6" x 9' 10"
Bedroom 2	3.58 x 3.21	11' 9" x 10' 7"
Bedroom 3	3.17 x 3.01	10' 5" x 9' 11"
Bedroom 4	3.52 x 2.15	11' 7" x 7' 1"

h	hob	ws	washing machine space
ovn	oven	cup'd	cupboard
ffzs	fridge freezer space	◀ ▶	measuring points
ds	dishwasher space		

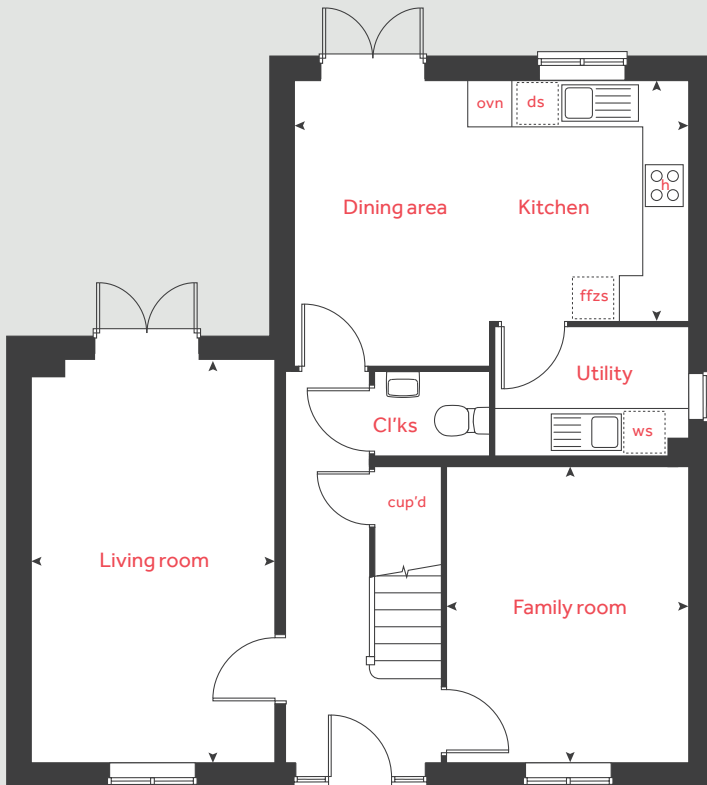
### The Raven | Twigworth Green |

The floorplan has been produced for illustrative purposes only. Room sizes shown are between arrow points as indicated on plan. The dimensions have tolerances of + or -50mm and should not be used other than for general guidance. If specific dimensions are required, enquiries should be made to the sales consultant. The floor plans shown are not to scale. Measurements are based on the original drawings. Slight variations may occur during construction.

The illustrations shown are computer generated impressions of how the property may look and are indicative only. External details or finishes may vary on individual plots and homes may be built in either detached or attached styles depending on the development layout. Exact specifications, window styles and whether a property is left or right-handed may differ from plot to plot. Please speak to our sales consultant for specific plot details.

Produced by Vistry Group Design Studio.  
When you have finished with this leaflet please recycle it.  
130-TWIG DS12694 / 11.24

### Ground floor





# The Goldcrest

4 bedroom home

**Twigworth Green**

Twigworth, Gloucestershire GL2 9GT | 01452 402751

[lindenhomes.co.uk](https://www.lindenhomes.co.uk)

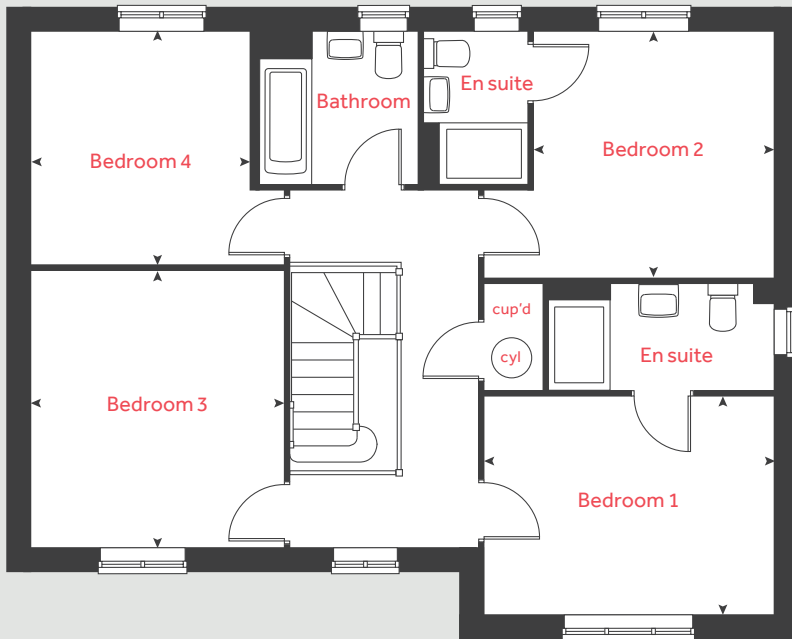
**Linden**  
HOMES



# The Goldcrest

4 bedroom home

## First floor



Ground floor	metres	feet / inches
Kitchen / dining / family area	9.97 x 3.09	32' 8" x 10' 1"
Living room	4.60 x 4.20	15' 1" x 13' 9"
Study	2.24 x 2.10	7' 4" x 6' 11"

First floor	metres	feet / inches
Bedroom 1	3.90 x 2.94	12' 10" x 9' 8"
Bedroom 2	3.31 x 3.22	10' 11" x 10' 7"
Bedroom 3	3.73 x 3.39	12' 2" x 11' 1"
Bedroom 4	3.12 x 2.93	10' 3" x 9' 7"

h	hob	ws	washing machine space
ovn	oven	cup'd	cupboard
ffzs	fridge freezer space	cyl	hot water cylinder
ds	dishwasher space	◀ ▶	measuring points

### The Goldcrest | Twigworth Green |

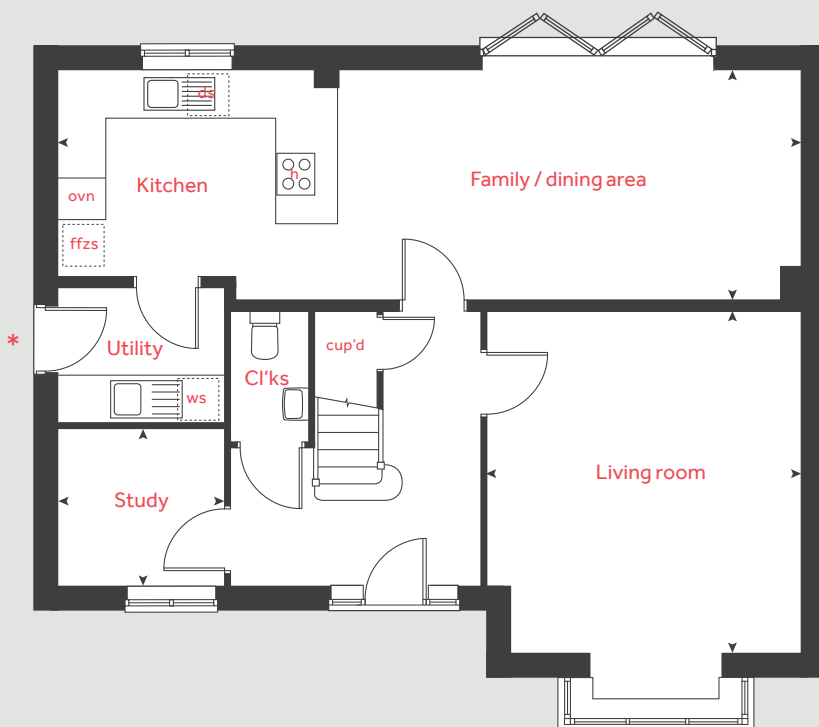
The floorplan has been produced for illustrative purposes only. Room sizes shown are between arrow points as indicated on plan. The dimensions have tolerances of + or -50mm and should not be used other than for general guidance. If specific dimensions are required, enquiries should be made to the sales consultant. The floor plans shown are not to scale. Measurements are based on the original drawings. Slight variations may occur during construction.

The illustrations shown are computer generated impressions of how the property may look and are indicative only. External details or finishes may vary on individual plots and homes may be built in either detached or attached styles depending on the development layout. Exact specifications, window styles and whether a property is left or right-handed may differ from plot to plot. Please speak to our sales consultant for specific plot details.

\* Door applies to selected plots only. Please see sales consultant for further details.

Produced by Vistry Group Design Studio.  
When you have finished with this leaflet please recycle it.  
130-TWIG DS12694 / 11.24

## Ground floor



**Linden**  
HOMES



# 3 bedroom Sage Home

Home 364



built  
by

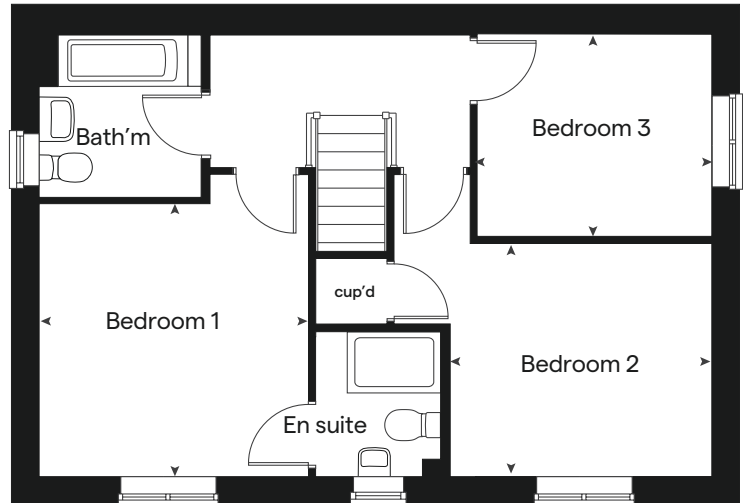




# 3 bedroom Sage Home

## Home 364

### First floor



Ground floor	metres	feet / inches
Kitchen / dining area	5.59 x 2.93	18' 4" x 9' 8"
Living room	5.59 x 3.33	18' 4" x 10' 11"

#### First floor

Bedroom 1	3.43 x 3.39	11' 3" x 11' 2"
Bedroom 2	3.34 x 2.94	10' 11" x 9' 8"
Bedroom 3	2.99 x 2.56	9' 10" x 8' 5"

ovn	oven	ffzs	fridge freezer space
h	hob	cup'd	cupboard
ds	dishwasher space	< >	measuring points
ws	washing machine space		

The floorplan has been produced for illustrative purposes only. Room sizes shown are between arrow points as indicated on plan. The dimensions have tolerances of + or -50mm and should not be used other than for general guidance. If specific dimensions are required, enquiries should be made to the sales consultant. The floor plans shown are not to scale. Measurements are based on the original drawings. Slight variations may occur during construction.

The illustrations shown are computer generated impressions of how the property may look and are indicative only. External details or finishes may vary on individual plots and homes may be built in either detached or attached styles depending on the development layout. Exact specifications, window styles and whether a property is left or right handed may differ from plot to plot. Please speak to our sales consultant for specific plot details.

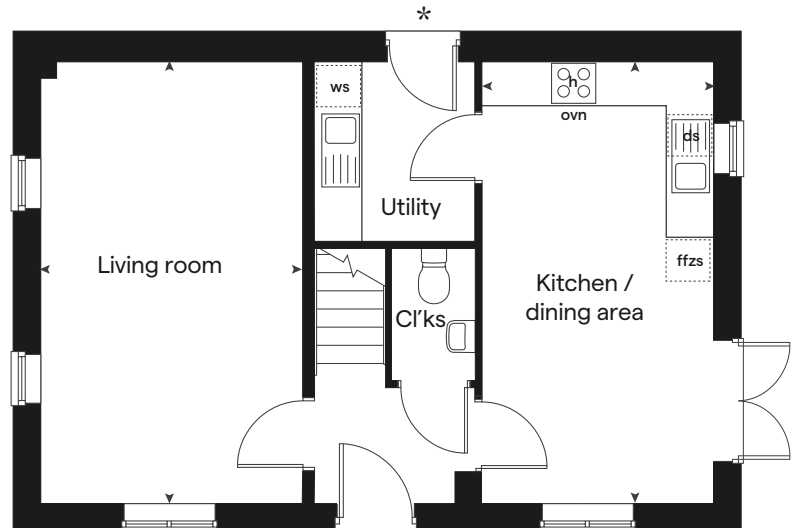
\* Utility door applies to selected plots only. Please see sales consultant for further details.

Produced by the Vistry Group Design Studio.

When you have finished with this leaflet please recycle it.

WTWIG (Merlin) DS12694 / 11.24

### Ground floor



built by





# 3 bedroom Sage Home

Homes 363, 371-376, 379 & 380



built  
by





# 3 bedroom Sage Home

Homes 363, 371-  
376, 379 & 380

Ground floor	metres	feet / inches
Kitchen	2.91 x 2.50	9' 7" x 8' 3"
Living / dining area	6.01 x 5.09	19' 9" x 16' 9"

## First floor

Bedroom 1	3.66 x 2.86	12' 0" x 9' 4"
Bedroom 2	2.85 x 2.37	9' 4" x 7' 9"
Bedroom 3	3.65 x 2.15	11' 11" x 7' 1"

ovn	oven	ffzs	fridge freezer space
h	hob	cup'd	cupboard
ds	dishwasher space	< >	measuring points
ws	washing machine space		

The floorplan has been produced for illustrative purposes only. Room sizes shown are between arrow points as indicated on plan. The dimensions have tolerances of + or -50mm and should not be used other than for general guidance. If specific dimensions are required, enquiries should be made to the sales consultant. The floor plans shown are not to scale. Measurements are based on the original drawings. Slight variations may occur during construction.

The illustrations shown are computer generated impressions of how the property may look and are indicative only. External details or finishes may vary on individual plots and homes may be built in either detached or attached styles depending on the development layout. Exact specifications, window styles and whether a property is left or right handed may differ from plot to plot. Please speak to our sales consultant for specific plot details.

Produced by the Vistry Group Design Studio.

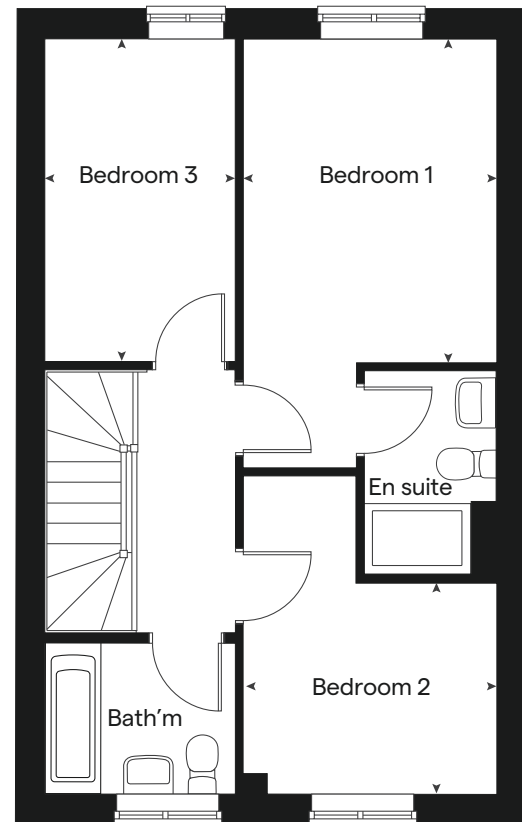
When you have finished with this leaflet please recycle it.  
WTWIG (Wren) DS12694 / 11.24



built by

**Linden**  
HOMES

## First floor



## Ground floor

