



Whiteley Meadows Whiteley

A superb collection of 2, 3, 4 & 5 bedroom homes.

Perfectly positioned within beautiful surrounding countryside, Whiteley Meadows offers an idyllic lifestyle for all potential buyers.

Close by is a friendly pub, while a short drive will take you to more open spaces at Swanwick Lakes Nature Reserve or Manor Farm Country Park. For eating out, nearby Burlesdon offers cafés, bars and restaurants, while a good choice of shops and eateries can also be found at Whiteley Shopping Centre, less than a 10 minute drive from home.

For commuters, the M27 and M3 are nearby for journeys to Portsmouth, Southampton and Winchester. Hedge End station is under 4 miles away for services to Portsmouth Harbour and London Waterloo, and flights across the UK and Europe are simple with Southampton Airport just 8 miles away.

Whiteley Meadows

Whiteley SO30 2HB | 01489 223 866

lindenhomes.co.uk/whiteleymeadows

Linden
HOMES

Development layout



5 bedroom home

- The Fletcher

4 bedroom home

- The Leverton
- The Pembroke
- The Mylne

3 bedroom home

- The Hamble
- The Mountford
- The Eveleigh

2 bedroom home

- The Hardwick
- The Ashbee

Affordable Housing *

- 2 bedroom homes
- 3 bedroom homes

- V Visitor Parking Space ▶ Garage Entrance
- Shed ■ Bus Shelter
- BCP Bin Collection Point

Not to scale. Trees and landscaping are indicative only and may alter during construction. The trees, shrubs and gardens shown are illustrative only. Finishes and materials may vary from those shown here. Please ask your Sales Consultant for specific details.



Specification

Updated January 2023

We give you so much more

Whiteley Meadows

Whiteley SO30 2HB | 01489 223 866

lindenhomes.co.uk/whiteleymeadows

Linden
HOMES

Specification

We give you so much more

Each home will be independently surveyed during construction by Premier Guarantee, who will issue their 10 year warranty certificate on completion of the home.

2 bedroom homes

3 bedroom homes

4 bedroom homes

5 bedroom homes

Kitchens

Symphony Konzept fitted kitchen with standard worktops, upstands and stainless steel splashback behind hob	■	■	■	■
Drawer unit with soft-close drawer	■	■	■	■
Single stainless steel under worktop electric oven	■	■	■	■
Stainless steel gas hob	■	■	■	■
Integrated hood	■	■		
Stainless steel chimney hood			■	■
Space for fridge freezer	■	■	■	■
Space for dishwasher	■	■	■	■
Space for washer/dryer	■	■	■	■
Single stainless steel sink with chrome mixer tap	■	■	■	■

Bathrooms, cloakrooms & ensuites

Contemporary white sanitaryware with chrome fittings	■	■	■	■
Full height tiling to shower enclosure	■	■	■	■
Splashback tiling above basins	■	■	■	■
Half height tiling above bath with handheld hair rinser	■	■	■	■

Electrical & lighting

White pendant lights throughout (excluding kitchen, cloakroom, bathroom & en suite)	■	■	■	■
BT point in living room	■	■	■	■
Baton light to kitchen & bathrooms	■	■	■	■
White switch plates and sockets	■	■	■	■
Media plate to Living Room	■	■	■	■

General

Walls in white emulsion	■	■	■	■
Ceilings – flush smooth finish in White Supermatt emulsion	■	■	■	■
Internal woodwork in satin white	■	■	■	■
White internal doors with polished chrome fittings	■	■	■	■
White satin staircase with white newel caps and handrails	■	■	■	■
Gas fired combi or system boiler dependent upon house type. Please consult with Sales Consultant	■	■	■	■
External door with multipoint locking system	■	■	■	■
Low energy external light to front door	■	■	■	■

Linden Homes subscribes to the consumer Code of Conduct.

Please refer to www.consumercodeforhomebuilders.com or ask your Sales Consultant for further information.

The specifications of all our homes is correct at the date of going to press but may be subject to change as necessary and without notice. Please refer to specific plot drawing and ask your Sales Consultant for more information. January 2023.

Linden
HOMES



The Hardwick 2 bedroom home

Whiteley Meadows

Whiteley SO30 2HB | 01489 223 866

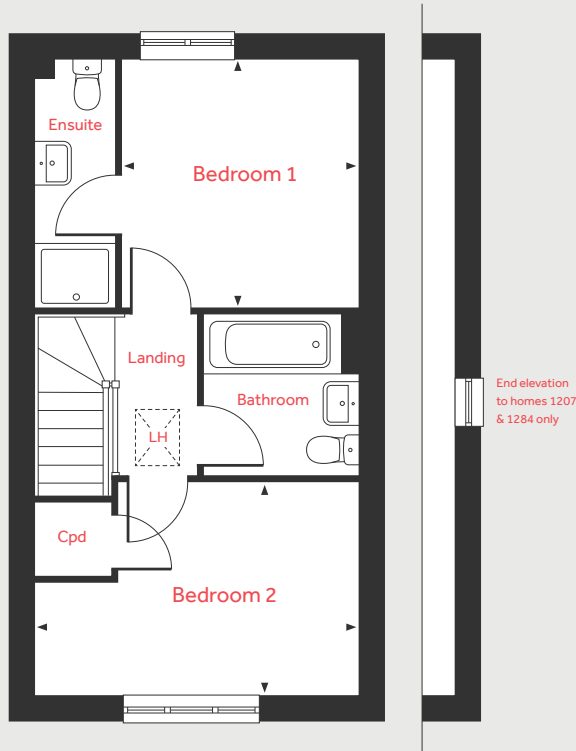
lindenhomes.co.uk/whiteleymeadows

Linden
HOMES

The Hardwick

2 bedroom home

First Floor



Ground Floor

Living Room
4.08m x 3.69m 13'5" x 12'1"

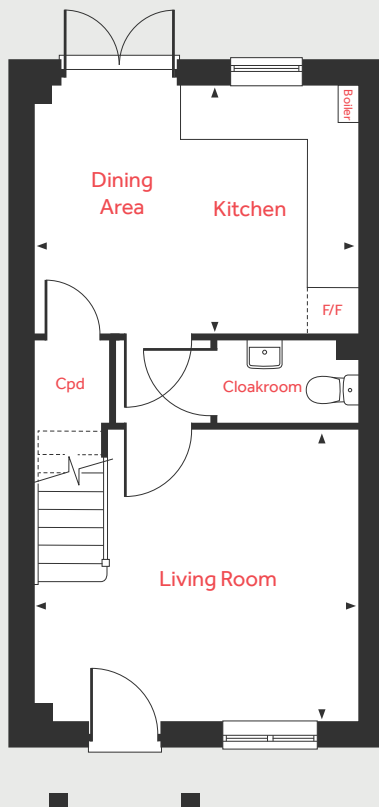
Kitchen/Dining Area
4.08m x 3.16m 13'5" x 10'5"

First Floor

Bedroom 1
3.17m x 3.01m 10'5" x 9'10"

Bedroom 2
4.08m x 2.70m 13'5" x 8'10"

Ground Floor



LH Loft hatch F/F Space for fridge freezer
Cpd Cupboard ◀ ▶ Measuring points

Please note, floorplans and dimensions are taken from architectural drawings and are for guidance only. Dimensions stated are within a tolerance of plus or minus 50mm. Overall dimensions are usually stated and there may be projections into these. With our continual improvement policy we constantly review our designs and specification to ensure we deliver the best product to our customers. Computer generated images not to scale. Finishes and materials may vary and landscaping is illustrative only. Kitchen layouts are indicative only and may change. To confirm specific details on our homes please ask your Sales Consultant. September 2022.



The Ashbee 2 bedroom home

Whiteley Meadows

Whiteley SO30 2HB | 01489 223 866

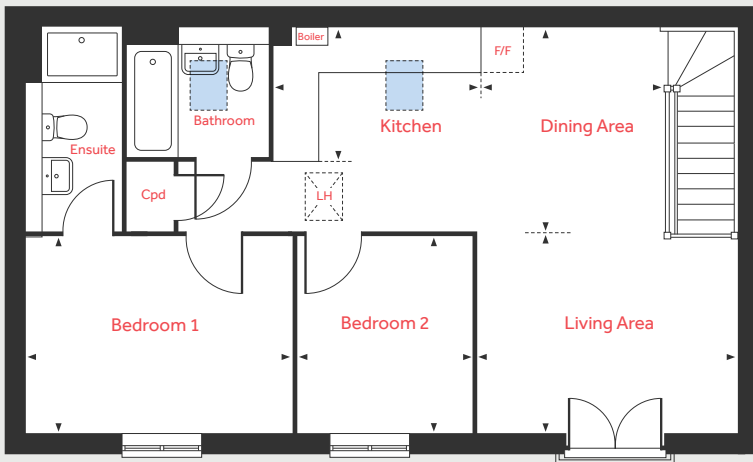
lindenhomes.co.uk/whiteleymeadows

Linden
HOMES

The Ashbee

2 bedroom home

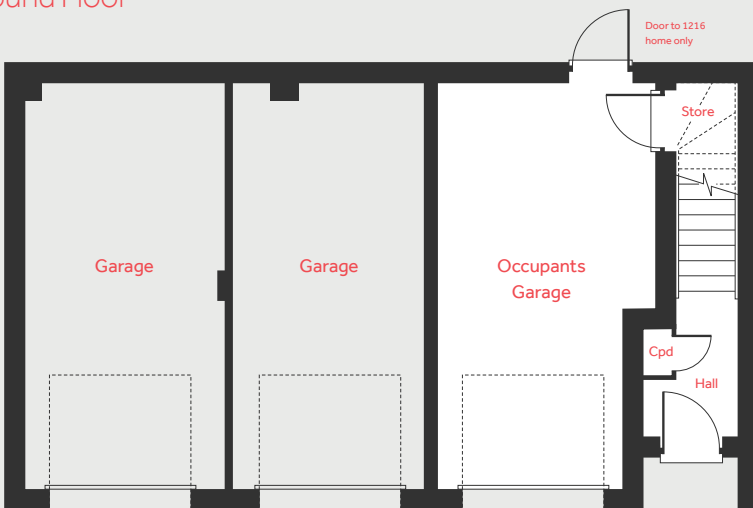
First Floor



First Floor

Living Area	3.86m x 2.97m	12'8" x 9'9"
Dining Area	3.07m x 2.85m	10'1" x 9'4"
Kitchen	3.06m x 2.00m	10'0" x 6'7"
Bedroom 1	3.99m x 2.90m	13'1" x 9'6"
Bedroom 2	2.90m x 2.61m	9'6" x 8'7"

Ground Floor



LH	Loft hatch	Velux window
Cpd	Cupboard	Measuring points
F/F	Space for fridge freezer	

Please note, floorplans and dimensions are taken from architectural drawings and are for guidance only. Dimensions stated are within a tolerance of plus or minus 50mm. Overall dimensions are usually stated and there may be projections into these. With our continual improvement policy we constantly review our designs and specification to ensure we deliver the best product to our customers. Computer generated images not to scale. Finishes and materials may vary and landscaping is illustrative only. Kitchen layouts are indicative only and may change. To confirm specific details on our homes please ask your Sales Consultant. September 2022.



The Eveleigh 3 bedroom home

Whiteley Meadows

Whiteley SO30 2HB | 01489 223 866

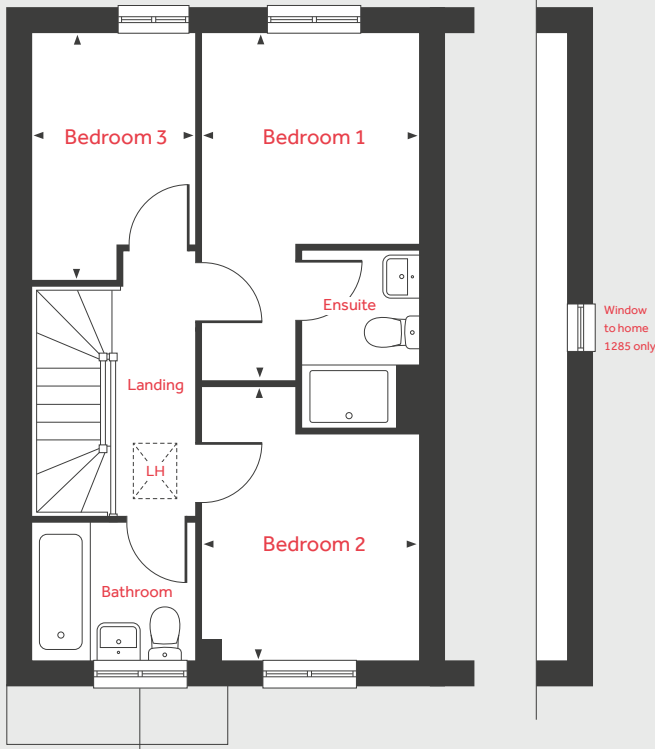
lindenhomes.co.uk/whiteleymeadows

Linden
HOMES

The Eveleigh

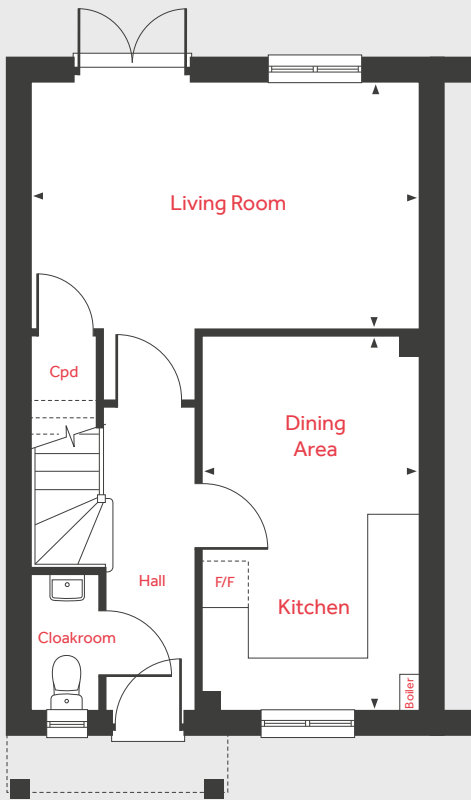
3 bedroom home

First Floor



Window compliant over flat porch canopy to homes 1235, 1236, 1240, 1241, 1242, 1243, 1245 & 1246 only

Ground Floor



Piers to support canopy to homes 1266, 1267, 1268, 1285 & 1286 only

Ground Floor

Living Room

4.98m x 3.21m 16'4" x 10'6"

Kitchen/Dining Area

4.78m x 2.80m 15'8" x 9'2"

First Floor

Bedroom 1

4.45m x 2.79m 14'7" x 9'2"

Bedroom 2

3.54m x 2.79m 11'7" x 9'2"

Bedroom 3

3.21m x 2.12m 10'6" x 7'0"

LH	Loft hatch	F/F	Space for fridge freezer
Cpd	Cupboard	◀ ▶	Measuring points

Please note, floorplans and dimensions are taken from architectural drawings and are for guidance only. Dimensions stated are within a tolerance of plus or minus 50mm. Overall dimensions are usually stated and there may be projections into these. With our continual improvement policy we constantly review our designs and specification to ensure we deliver the best product to our customers. Computer generated images not to scale. Finishes and materials may vary and landscaping is illustrative only. Kitchen layouts are indicative only and may change. To confirm specific details on our homes please ask your Sales Consultant. September 2022.

Linden
HOMES



The Mountford

3 bedroom home



Whiteley Meadows

Whiteley SO30 2HB | 01489 223 866

lindenhomes.co.uk/whiteleymeadows

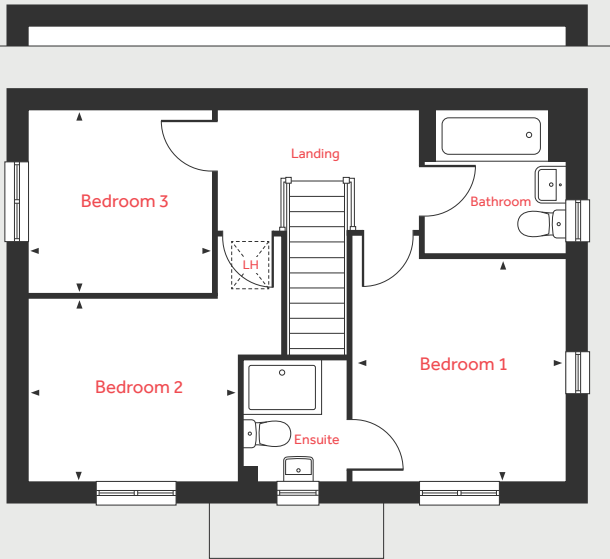
Linden
HOMES

The Mountford

3 bedroom home

First Floor

End elevation to homes 1223, 1252, 1260 & 1281 only



End elevation to home 1204 only



Ground Floor

Living Room

5.59m x 3.12m 18'4" x 10'3"

Kitchen/Dining Area

5.59m x 2.67m 18'4" x 8'9"

First Floor

Bedroom 1

3.37m x 3.19m 11'0" x 10'6"

Bedroom 2

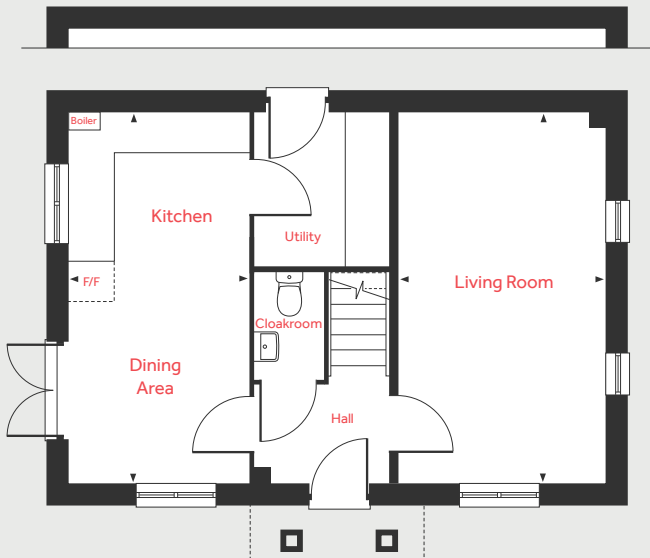
3.15m x 2.74m 10'4" x 9'0"

Bedroom 3

2.78m x 2.78m 9'1" x 9'1"

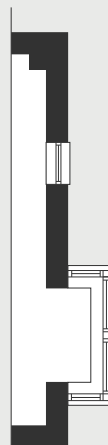
Ground Floor

End elevation to homes 1223, 1252, 1260 & 1281 only

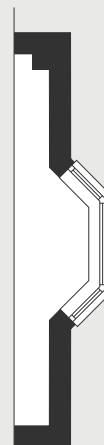


Canopy plinth to homes 1247, 1252, 1257, 1260, 1269, 1279 & 1281 only

End elevation to homes 1247 & 1257 only



End elevation to homes 1204, 1260, 1269, 1279 & 1281 only



LH Loft hatch F/F Space for fridge freezer
Cpd Cupboard ◀ ▶ Measuring points

Please note, floorplans and dimensions are taken from architectural drawings and are for guidance only. Dimensions stated are within a tolerance of plus or minus 50mm. Overall dimensions are usually stated and there may be projections into these. With our continual improvement policy we constantly review our designs and specification to ensure we deliver the best product to our customers. Computer generated images not to scale. Finishes and materials may vary and landscaping is illustrative only. Kitchen layouts are indicative only and may change. To confirm specific details on our homes please ask your Sales Consultant. September 2022.

Linden

HOMES



The Hamble

3 bedroom home



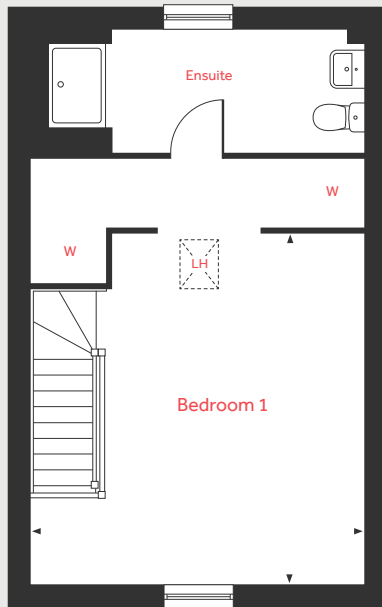
Whiteley Meadows

Whiteley SO30 2HB | 01489 223 866

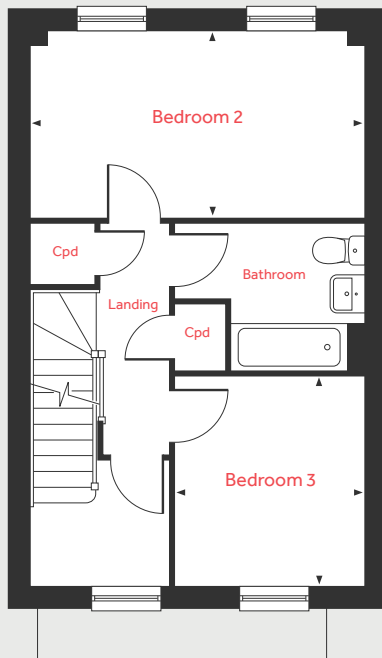
[lindenhomes.co.uk/whiteleymeadows](https://www.lindenhomes.co.uk/whiteleymeadows)

Linden
HOMES

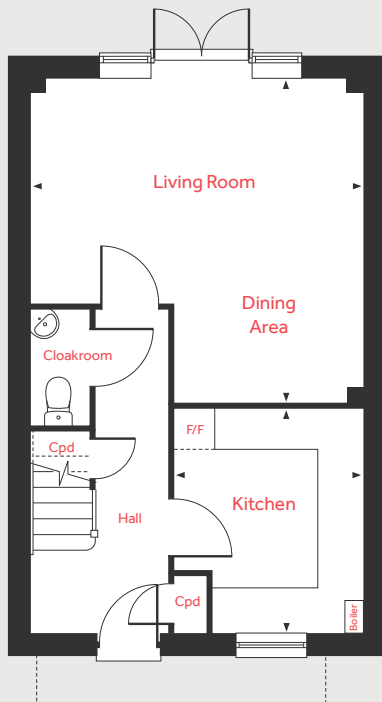
Second Floor



First Floor



Ground Floor



The Hamble

3 bedroom home

Ground Floor

Living/Dining Area

4.83m x 4.73m

15'10" x 15'6"

Kitchen

3.26m x 2.74m

10'8" x 9'0"

First Floor

Bedroom 2

4.83m x 2.75m

15'10" x 9'0"

Bedroom 3

3.02m x 2.74m

9'11" x 9'0"

Second Floor

Bedroom 1

5.10m x 4.82m

16'9" x 15'10"

LH	Loft hatch	W	Wardrobe
Cpd	Cupboard	◀ ▶	Measuring points
F/F	Space for fridge freezer		

Please note, floorplans and dimensions are taken from architectural drawings and are for guidance only. Dimensions stated are within a tolerance of plus or minus 50mm. Overall dimensions are usually stated and there may be projections into these. With our continual improvement policy we constantly review our designs and specification to ensure we deliver the best product to our customers. Computer generated images not to scale. Finishes and materials may vary and landscaping is illustrative only. Kitchen layouts are indicative only and may change. To confirm specific details on our homes please ask your Sales Consultant. September 2022.

Linden

HOMES



The Leverton 4 bedroom home

Whiteley Meadows

Whiteley SO30 2HB | 01489 223 866

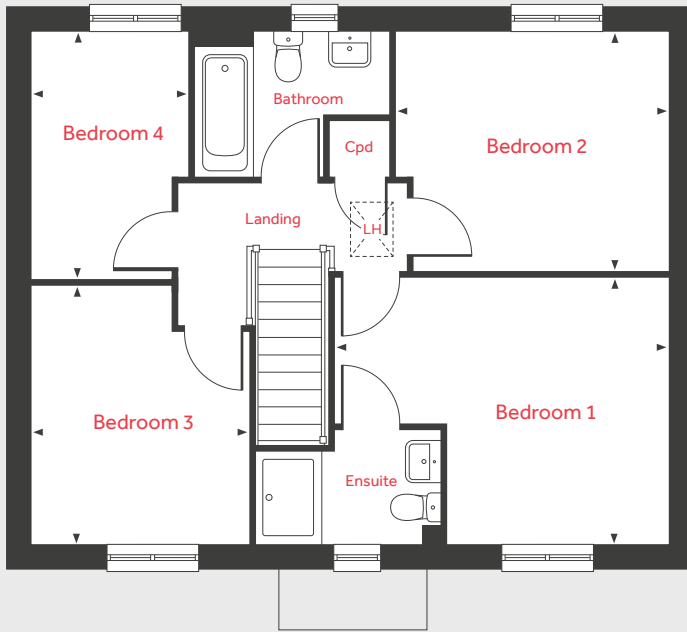
lindenhomes.co.uk/whiteleymeadows

Linden
HOMES

The Leverton

4 bedroom home

First Floor



Ground Floor



Ground Floor

Living Room	4.80m x 3.40m	15'9" x 11'2"
Dining Area	3.92m x 2.81m	12'10" x 9'3"
Kitchen	2.99m x 2.80m	9'10" x 9'3"
Study	3.40m x 1.84m	11'2" x 6'0"

First Floor

Bedroom 1	4.41m x 3.49m	14'5" x 11'5"
Bedroom 2	3.60m x 3.15m	11'10" x 10'4"
Bedroom 3	3.36m x 2.88m	11'0" x 9'6"
Bedroom 4	3.28m x 2.09m	10'9" x 6'10"

LH	Loft hatch	F/F	Integrated fridge freezer
Cpd	Cupboard	◀ ▶	Measuring points

Please note, floorplans and dimensions are taken from architectural drawings and are for guidance only. Dimensions stated are within a tolerance of plus or minus 50mm. Overall dimensions are usually stated and there may be projections into these. With our continual improvement policy we constantly review our designs and specification to ensure we deliver the best product to our customers. Computer generated images not to scale. Finishes and materials may vary and landscaping is illustrative only. Kitchen layouts are indicative only and may change. To confirm specific details on our homes please ask your Sales Consultant. September 2022.



The Pembroke

4 bedroom home

Whiteley Meadows

Whiteley SO30 2HB | 01489 223 866

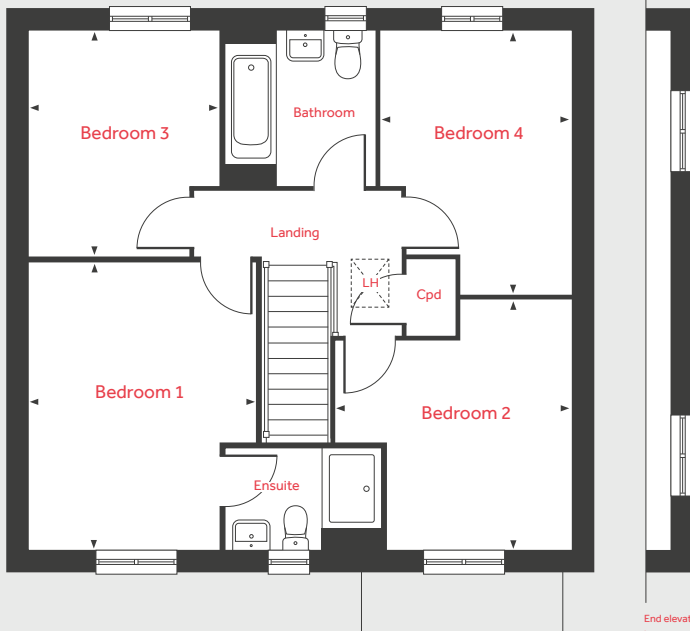
lindenhomes.co.uk/whiteleymeadows

Linden
HOMES

The Pembroke

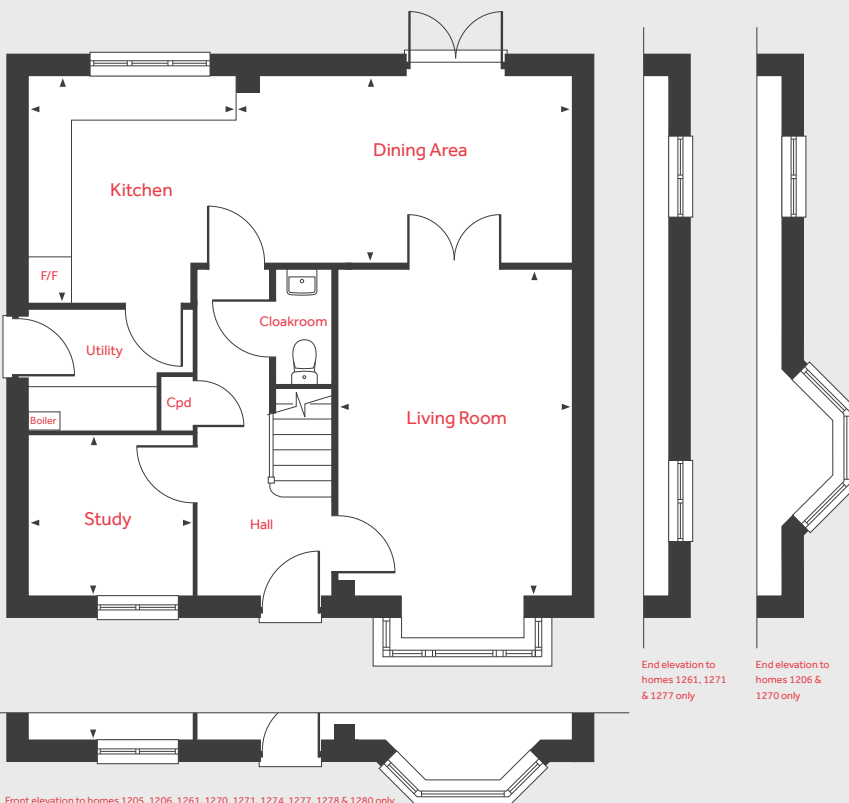
4 bedroom home

First Floor



End elevation to homes 1206, 1261, 1270, 1271 & 1277 only

Ground Floor



End elevation to homes 1261, 1271 & 1277 only

End elevation to homes 1206 & 1270 only

Front elevation to homes 1205, 1206, 1261, 1270, 1271, 1274, 1277, 1278 & 1280 only

Ground Floor

Living Room	4.83m x 3.50m	15'10" x 11'6"
Dining/Family Area	5.02m x 2.75m	16'5" x 9'0"
Kitchen	3.37m x 3.05m	11'1" x 10'0"
Study	2.42m x 2.37m	7'11" x 7'9"

First Floor

Bedroom 1	4.30m x 3.40m	14'1" x 11'2"
Bedroom 2	3.71m x 3.50m	12'2" x 11'6"
Bedroom 3	3.36m x 2.88m	11'0" x 9'5"
Bedroom 4	3.94m x 2.82m	12'11" x 9'3"

LH	Loft hatch	F/F	Integrated fridge freezer
Cpd	Cupboard	◀ ▶	Measuring points

Please note, floorplans and dimensions are taken from architectural drawings and are for guidance only. Dimensions stated are within a tolerance of plus or minus 50mm. Overall dimensions are usually stated and there may be projections into these. With our continual improvement policy we constantly review our designs and specification to ensure we deliver the best product to our customers. Computer generated images not to scale. Finishes and materials may vary and landscaping is illustrative only. Kitchen layouts are indicative only and may change. To confirm specific details on our homes please ask your Sales Consultant. September 2022.



The Mylne

4 bedroom home

Whiteley Meadows

Whiteley SO30 2HB | 01489 223 866

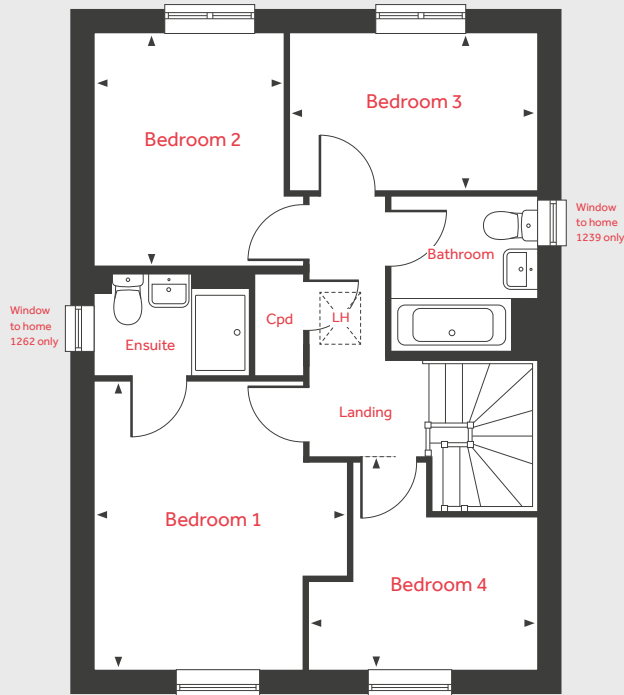
lindenhomes.co.uk/whiteleymeadows

Linden
HOMES

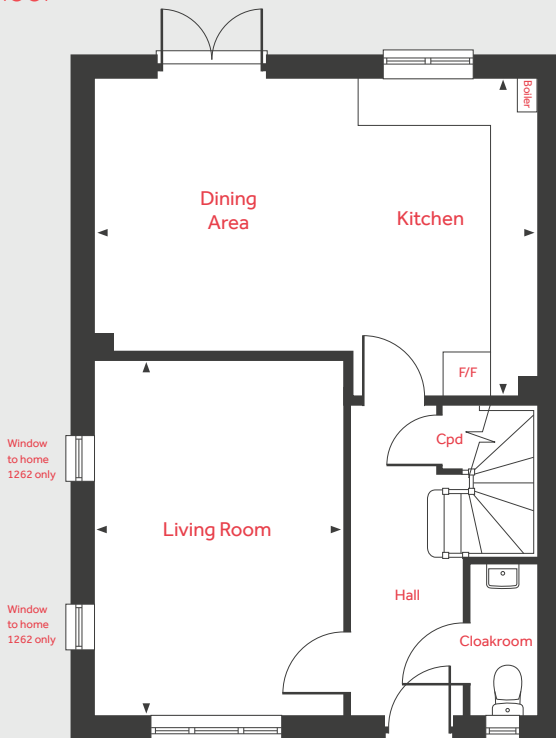
The Mylne

4 bedroom home

First Floor



Ground Floor



Ground Floor

Living Room
4.84m x 3.40m 15'10" x 11'2"

Kitchen/Dining Area
6.04m x 4.38m 19'10" x 14'4"

First Floor

Bedroom 1
3.95m x 3.45m 13'0" x 11'4"

Bedroom 2
3.21m x 2.88m 10'6" x 9'5"

Bedroom 3
3.39m x 2.24m 11'1" x 7'4"

Bedroom 4
3.11m x 2.85m 10'3" x 9'4"

LH	Loft hatch	F/F	Integrated fridge freezer
Cpd	Cupboard	◀ ▶	Measuring points

Please note, floorplans and dimensions are taken from architectural drawings and are for guidance only. Dimensions stated are within a tolerance of plus or minus 50mm. Overall dimensions are usually stated and there may be projections into these. With our continual improvement policy we constantly review our designs and specification to ensure we deliver the best product to our customers. Computer generated images not to scale. Finishes and materials may vary and landscaping is illustrative only. Kitchen layouts are indicative only and may change. To confirm specific details on our homes please ask your Sales Consultant. September 2022.



The Fletcher

5 bedroom home

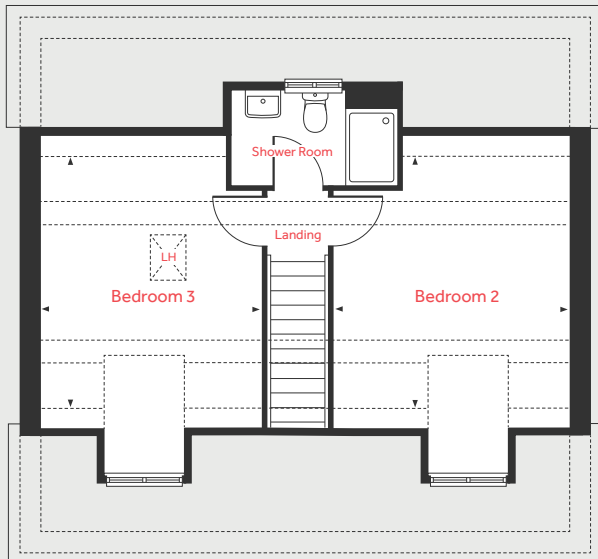
Whiteley Meadows

Whiteley SO30 2HB | 01489 223 866

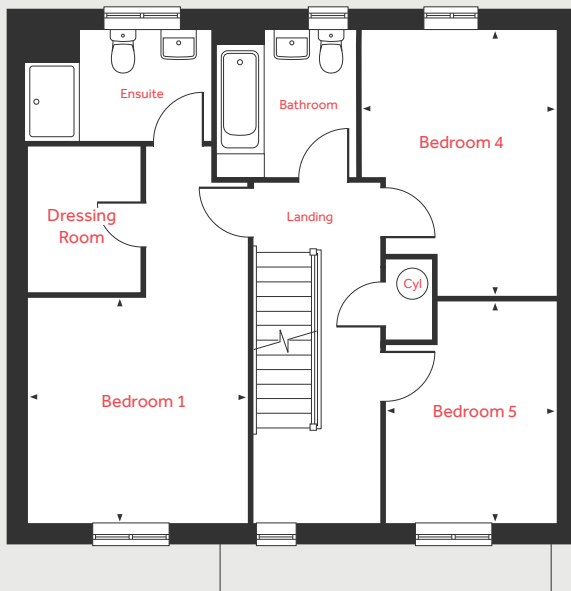
lindenhomes.co.uk/whiteleymeadows

Linden
HOMES

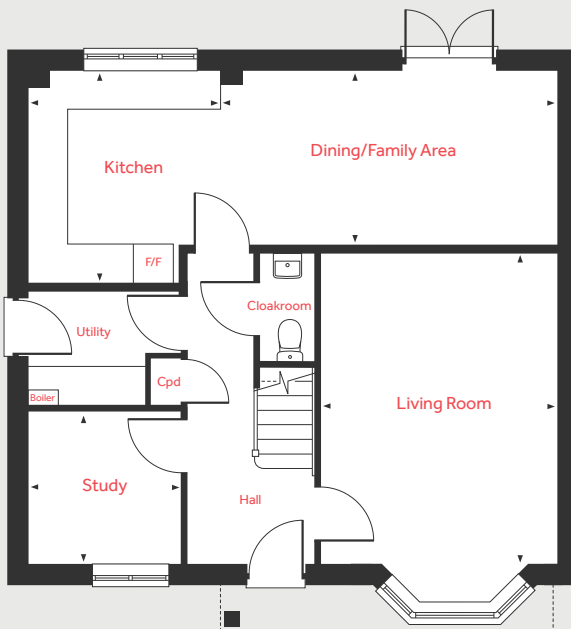
Second Floor



First Floor



Ground Floor



The Fletcher

5 bedroom home

Ground Floor

Living Room	4.83m x 3.72m	15'10" x 12'2"
Dining/Family Area	5.24m x 2.75m	17'2" x 9'0"
Kitchen	3.35m x 3.05m	11'0" x 10'0"
Study	2.42m x 2.37m	7'11" x 7'9"

First Floor

Bedroom 1	3.52m x 3.47m	11'7" x 11'5"
Bedroom 4	3.54m x 3.05m	11'8" x 10'0"
Bedroom 5	2.75m x 2.67m	9'0" x 8'9"

Second Floor

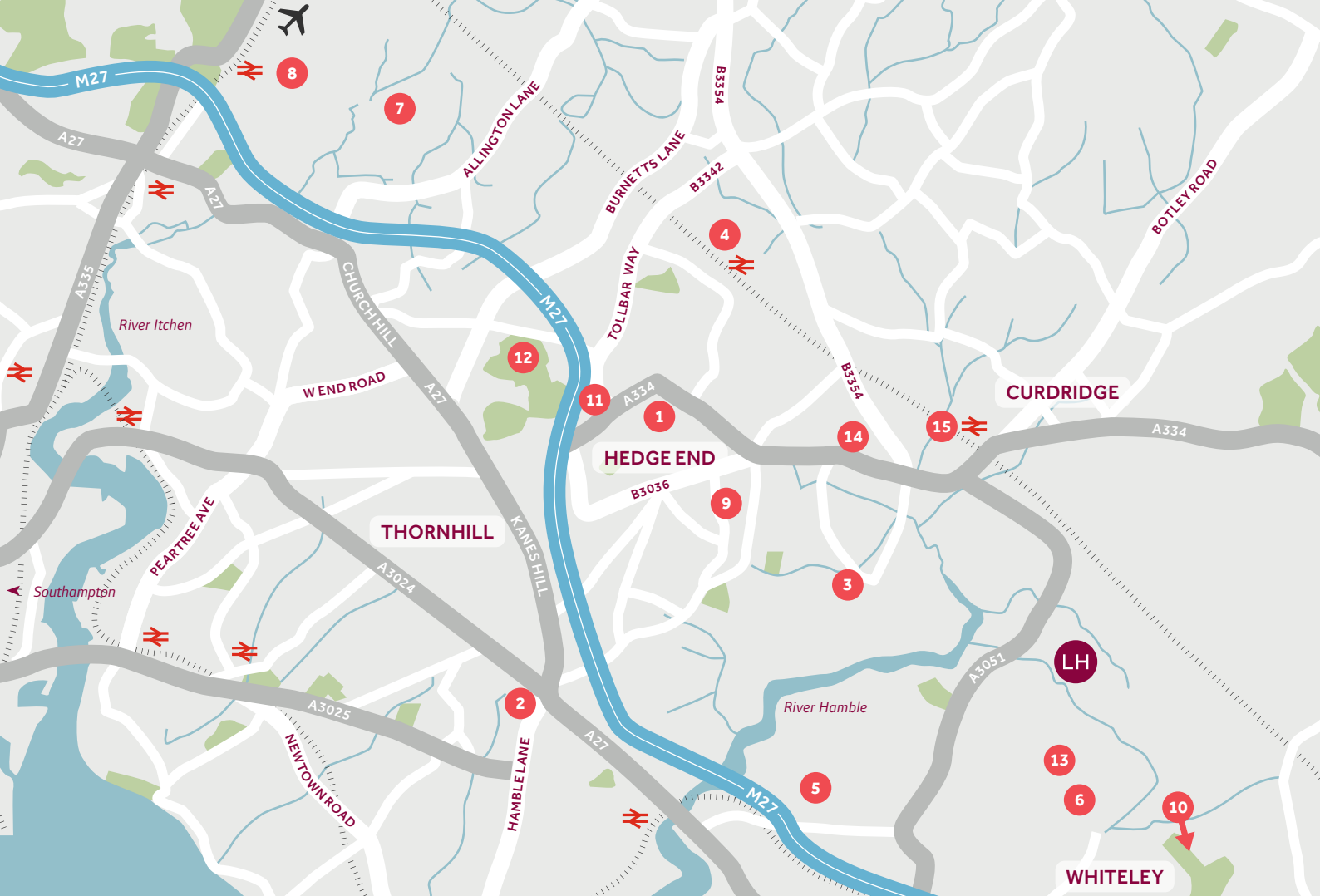
Bedroom 2	3.96m x 3.70m	13'0" x 12'2"
Bedroom 3	3.96m x 3.47m	13'0" x 11'5"

LH	Loft hatch	F/F	Integrated fridge freezer
Cpd	Cupboard	◀ ▶	Measuring points

Please note, floorplans and dimensions are taken from architectural drawings and are for guidance only. Dimensions stated are within a tolerance of plus or minus 50mm. Overall dimensions are usually stated and there may be projections into these. With our continual improvement policy we constantly review our designs and specification to ensure we deliver the best product to our customers. Computer generated images not to scale. Finishes and materials may vary and landscaping is illustrative only. Kitchen layouts are indicative only and may change. To confirm specific details on our homes please ask your Sales Consultant. September 2022.

Linden

HOMES



Around the local neighbourhood

- | | | |
|--|---------------------------------------|--|
| 1 Shamblehurst Primary School | 6 Whiteley Shopping Centre | 11 Hedge End Retail Park |
| 2 Tesco Extra | 7 Itchen Valley country park | 12 The Ageas Bowl, cricket ground |
| 3 Manor Farm country park | 8 Southampton Airport | 13 Cornerstone Primary School |
| 4 Hedge End train station | 9 Freegrunds Infant School | 14 Botley Primary School |
| 5 Swanwick Lakes Nature Reserve | 10 Skylark Golf & Country Club | 15 Botley train station |

Distances shown are by road (Source: Google). Fastest journey times are shown (Source: National Rail Enquiries).
September 2022.

[lindenhomes.co.uk/whiteleymeadows](https://www.lindenhomes.co.uk/whiteleymeadows)

Linden
HOMES