

Little Glen

Glen Parva, Leicester



A taste of local life

Little Glen

Cork Lane, Glen Parva, Leicester LE2 9JR | 01162 179893

lindenhomes.co.uk

Linden
HOMES



Welcome to Little Glen

Situated in the heart of Leicestershire, just south of Leicester, our selection of brand new, 2, 3 & 4 bedroom homes in Glen Parva offer a great blend of suburban living with city accessibility.

Glen Parva's charm is amplified by its close proximity to local amenities and excellent links to Leicester City, making it an ideal choice for families of all sizes.

Residents will love having Fosse Park shopping centre just moments away, providing a variety of retail and dining options. For those who enjoy the great outdoors, Glen Parva is a gateway to scenic locales such as Glen Parva Nature Reserve and picturesque walks along the Grand Union Canal and local cycle paths.

Leicester City boasts a variety of attractions for those looking for a day out on their doorstep. Football and Rugby enthusiasts will be thrilled with the King Power and Welford Road stadiums offering exciting matches and a vibrant sporting culture on their doorstep.

Families will find a wealth of activities, the National Space Centre, Newarke Houses Museum, King Richard visitor centre and pop up events happening across the city throughout the year.

Glen Parva offers superb transportation links, ensuring easy connectivity. Narborough train station, a mere 3 miles away, provides quick access to Birmingham and Leicester. From Leicester train station, less than 5 miles away, more routes are available to London, Nottingham, Lincoln, and Sheffield. Additionally, with the M1 and M69 highways situated just 3 miles away, commuting is a breeze.

Experience the perfect blend of community charm and contemporary conveniences in this sought-after location. If you're searching for a quality new home in Glen Parva, look no further. Your ideal living experience starts here!



The perfect position

Education for everyone

There are a number of schools within a 5-minute drive of Little Glen, catering for children aged 4-11 years. The nearest, Glen Hills which is just a 3 minute walk and Rolleston, a 4 minute drive.

We've already begun to engage with these schools, giving talks and connecting with the teachers for further support over the course of the development.

For senior students, South Wigston High School and Tudor Grange Samworth Academy are both just under 2 miles away, catering for 11-16 years.

Fosse Park Shopping Centre
1.3 miles | 27 mins walk

27

mins



Rutland Cycling
1.1 miles | 24 mins walk

24

mins



National Space Centre
6 miles | 27 mins drive

27

mins



Stoney Cove
8 miles | 20 mins drive

20

mins



Little
Glen

Glen Parva & Glen Hills
local nature reserve
0.3 miles | 6 mins walk

6

mins



Abbey Park Miniature Railway
8.3 miles | 23 mins drive

23

mins



Leicester City Football Club
3.1 miles | 12 mins drive

12

mins



Bouskell Park
12 miles | 25 mins walk

25

mins



Distances and timings are approximate and for reference only. Calculated using maps.google.co.uk

A community to be proud of



We know that the area surrounding your new home is just as important as the features within your new property. As well as bringing a range of new homes to the area, we also make a commitment, these commitments are chosen based on the needs of our new community and we work with the local council to deliver them. "We are proud to be investing over **£834,000** in local schemes to support the community surrounding your new home in Leicester

Our homes are **Greener by Design!** From solar panels, high class installation and EV charging points, our homes have everything you need to save on your energy bills.



Some of our **community contributions** include:

GLEN HILLS LIBRARY 	PRIMARY AND SECONDARY EDUCATION 	PUBLIC OPEN SPACES 	HEALTHCARE
POLICE CONTRIBUTION 	IMPROVED PUBLIC TRANSPORT FACILITIES 	HIGHWAY AND ROAD IMPROVEMENT 	

Green initiatives found at Little Glen:

VEHICLE CHARGING POINTS TO ALL HOMES! 	HEDGEHOG HIGHWAYS 	1000+ TREES PLANTED
BIRD, BAT & BEE BRICKS 		A+ RATED DOUBLE-GLAZED WINDOWS

Personalise your new home with upgrades and extras from our **Enhance** range, where the choice is yours

There's nothing more exciting than reserving your dream new Linden home, with **Enhance** there is even more reason to look forward to moving day.

Enhance offers you the chance to personalise your new home with a wide range of options and upgrades available. It suits your needs and wants perfectly and moving day can't come quick enough!

From customising your kitchen with stylish cupboards and worktops to having the latest modern appliances.

Choose your tiles in the bathroom or complete your bedroom with fitted wardrobes. Whatever your style, it's your canvas to make your own and allow your personality to sing.

The best thing is that you don't have to decide all this at the time of reserving - you can think about how you want your new home to look in the comfort of your current home.

The availability of items is subject to the stage of build, and can vary by development and house type. Our sales consultants will be happy to provide you with guidance.

We're here to help you make it completely unique, so express yourself with **Enhance**.



Purchase assistance schemes

Wherever you are in the home-buying market - a first-time buyer, looking to step up the property ladder or a downsizer - we have a variety of great purchase assistance schemes!

Smooth Move

Smooth Move is our scheme for all existing property owners to save time and money. We deal with the estate agents to sell your home and even pay the estate agents' fees!

Home Exchange

With **Home Exchange** you can have peace of mind knowing that we are your guaranteed buyer, meaning you'll have a chain-free move without the estate agents' fees.

A home designed with you in mind

We are constantly reviewing our houses and ensuring they are everything that our customers want in a home. We are proud to have developed and launched a new range of homes.

These homes have been created to embrace modern design and styling, whilst retaining classic architectural traditions.

An integral part of the design process for our new range of homes was to ensure they have a real wow factor and eye-catching kerb appeal. From designing external elevations to create attractive street scenes through to maximising the flow and size of the rooms, the homes include a variety of features to capture the attention.

The flow and layout of the new homes has been a key consideration to accommodate today's lifestyles, with a focus on future living.

With the kitchen at the heart of the home, impressive family spaces have been included within them to create sociable living areas.



Firm foundations means peace of mind for you

When buying a new home, you want to be sure you can trust your builder. Choosing a Linden home gives you the peace of mind that comes from choosing a company that has been building some of the **best homes in the UK for more than a hundred years.**

We pride ourselves on being one of the country's leading housebuilders and have established an enviable reputation for the quality of our build and design, specification and customer service.

Each Linden home is carefully planned both to meet your needs and to integrate into the existing location.

We will often use local materials and reflect regional features. Trees are retained wherever possible and new landscaping added, along with footpaths and cycleways in many cases to help create a wonderful place to live.

Scan me
for directions



Little Glen

Cork Lane, Glen Parva,
Leicester LE2 9JR

From M1

- Exit at Junction 21, head towards Leicester City Centre.
- At the round about, take the 3rd exit onto the B4114 towards Narborough (Narborough Road South).
- Keep left, take the next left onto the A563, Soar Valley Way.
- At the next crossroads, take a right onto the A426, Lutterworth Road.
- Take the next right after 'West View Care Home' onto West View Avenue.
- At the end of the road, turn left onto Cork Lane and you'll see the entrance to Little Glen at the end of the road.

Cover photograph of Abbey Park, 5 miles from Little Glen. Not view from the development. The street scene shown has been produced for illustrative purposes only. Please check the details of the homes you are interested in with our sales consultant.

Vistry South East Midlands region

Penman House, 1 Penman Way, Grove Park, Enderby, Leicester, Leicestershire LE19 1SY. Telephone: 01164 648 821

Produced by the Vistry Group Design Studio.

When you have finished with this leaflet please recycle it.

DS09074 / 05.24

Linden
HOMES



Development plan

Little Glen

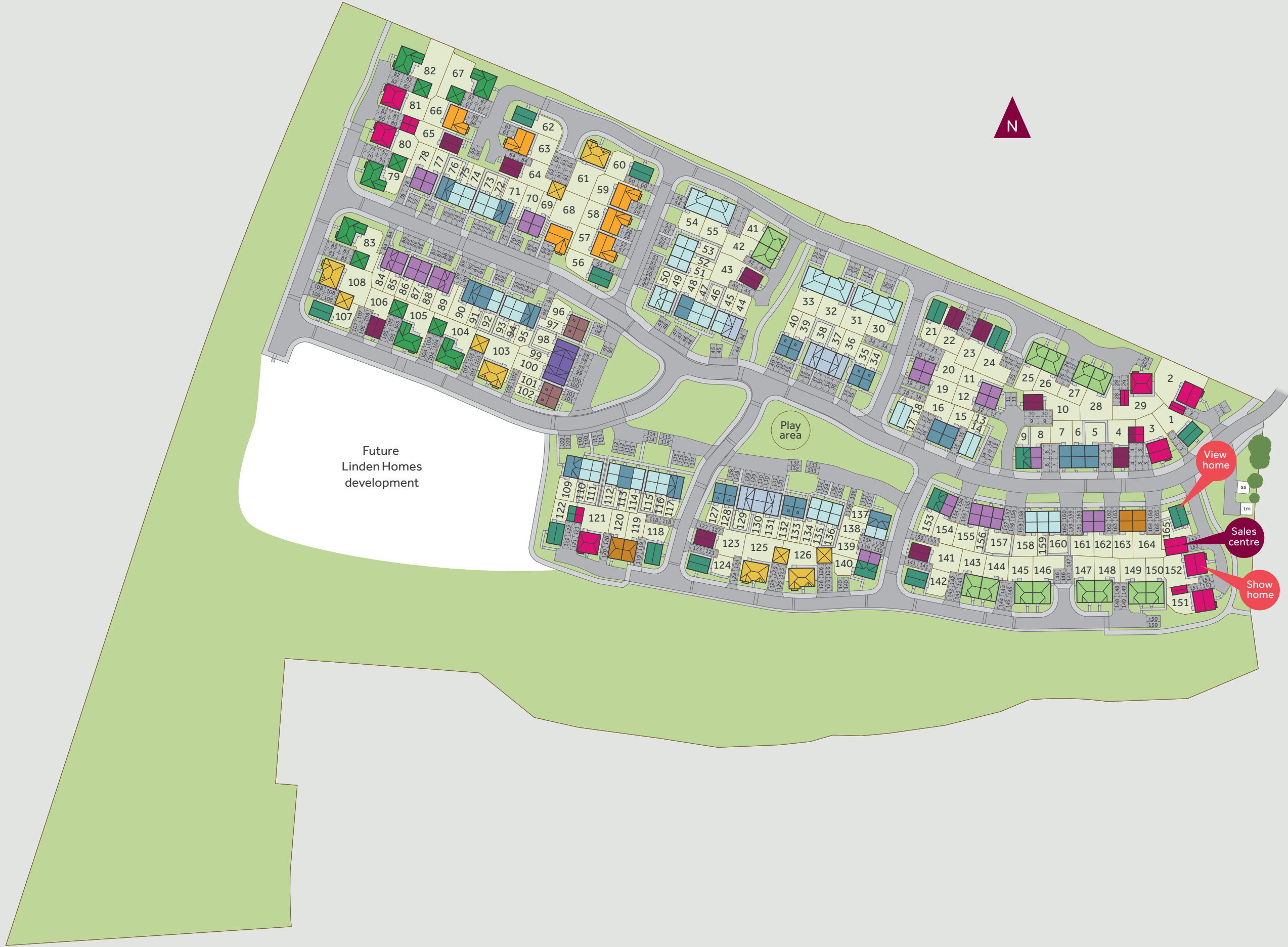
Cork Lane, Glen Parva, Leicester LE2 9JR | 01162 179893

lindenhomes.co.uk

Linden
HOMES

Little Glen

Glen Parva



4 bedroom homes

- The Cottingham
- The Foulston
- The Grainger
- The Kempthorne
- The Pembroke

3 bedroom homes

- The Elliot
- The Eveleigh
- The Mountford
- The Wyatt

2 bedroom homes

- The Hardwick
- The Langton

Pre-sold homes

- 2 bedroom homes
- 3 bedroom homes
- 4 bedroom homes

- ss** substation
tm telecom mast

This plan has been produced for home identification purposes only and is not to scale. The development layout, landscaping and tenure of all dwellings may be subject to change throughout the course of the development. Finishes and materials may vary from those shown on the plan. Please check the details of your chosen plot and housetype with the sales consultant. Development layout plan correct at time of production.

Vistry South East Midlands region

Penman House, 1 Penman Way, Grove Park, Enderby, Leicester, Leicestershire LE19 1SY. Telephone: 01164 648 821

Produced by the Vistry Group Design Studio. When you have finished with this leaflet please recycle it.

DS09074 / 05.24

Linden
HOMES



The Hardwick

2 bedroom home

- PV solar panels
- Electric vehicle charging point
- High quality insulation
- Low energy lighting
- Wildflower planting

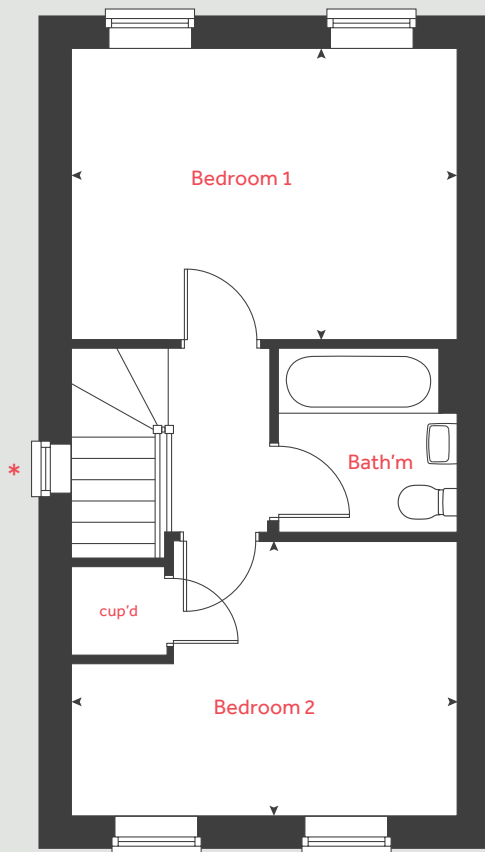
Little Glen

Cork Lane, Glen Parva, Leicester LE2 9JR | 01162 179893

lindenhomes.co.uk

Linden
HOMES

First floor



The Hardwick

2 bedroom home

Ground floor	metres	feet / inches
Kitchen / dining area	4.08 x 3.15	13' 4" x 10' 3"
Living room	4.08 x 3.68	13' 4" x 12' 1"

First floor	metres	feet / inches
Bedroom 1	4.08 x 3.15	13' 4" x 10' 3"
Bedroom 2	4.08 x 2.68	13' 4" x 8' 8"
"		

h	hob	ws	washing machine space
ovn	oven	cup'd	cupboard
ffzs	fridge freezer space	◀ ▶	measuring points
ds	dishwasher space		

The Hardwick | Little Glen |

The floorplan has been produced for illustrative purposes only. Room sizes shown are between arrow points as indicated on plan. The dimensions have tolerances of + or -50mm and should not be used other than for general guidance. If specific dimensions are required, enquiries should be made to the sales consultant. The floor plans shown are not to scale. Measurements are based on the original drawings. Slight variations may occur during construction.

The illustrations shown are computer generated impressions of how the property may look and are indicative only. External details or finishes may vary on individual plots and homes may be built in either detached or attached styles depending on the development layout. Exact specifications, window styles and whether a property is left or right-handed may differ from plot to plot. Please speak to our sales consultant for specific plot details.

* Window applicable & obscured glass to plots 8, 11, 12, 19, 20, 49, 51, 53, 69, 70, 77, 78, 84, 89, 111, 138, 139, 154, 155, 157, 161 & 162. Please see sales consultant for further details.
Bin store applicable to plot 156 only. Please see sales consultant for further details.

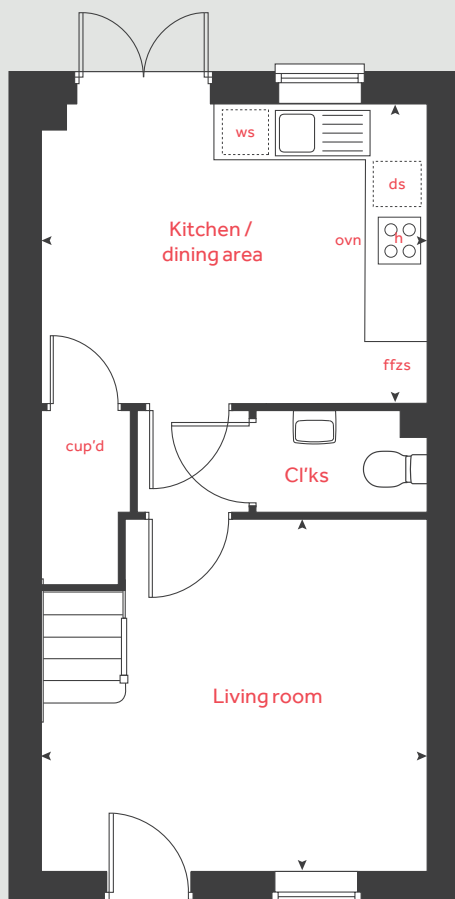
Please note, solar panels are provided with each home. Placement on the solar panels are dependent on the roof design and plot position.

Produced by Vistry Group Design Studio.

When you have finished with this leaflet please recycle it.

DS09074 / 10.24

Ground floor



Linden

HOMES



The Langton

2 bedroom home

- PV solar panels
- Electric vehicle charging point
- High quality insulation
- Low energy lighting
- Wildflower planting

Little Glen

Cork Lane, Glen Parva, Leicester LE2 9JR | 01162 179893

lindenhomes.co.uk

Linden
HOMES

The Langton

2 bedroom home

Ground floor	metres	feet / inches
Kitchen	3.65 x 3.44	12' 0" x 11' 3"
Living / dining area	3.45 x 2.67	11' 3" x 8' 8"
Bedroom 1	3.80 x 3.23	12' 5" x 10' 6"
Bedroom 2	3.65 x 2.23	12' 0" x 7' 3"

h	hob	ws	washing machine space
ovn	oven	cup'd	cupboard
ffzs	fridge freezer space	◀ ▶	measuring points
ds	dishwasher space		

The Langton | Little Glen |

The floorplan has been produced for illustrative purposes only. Room sizes shown are between arrow points as indicated on plan. The dimensions have tolerances of + or - 50mm and should not be used other than for general guidance. If specific dimensions are required, enquiries should be made to the sales consultant. The floor plans shown are not to scale. Measurements are based on the original drawings. Slight variations may occur during construction.

The illustrations shown are computer generated impressions of how the property may look and are indicative only. External details or finishes may vary on individual plots and homes may be built in either detached or attached styles depending on the development layout. Exact specifications, window styles and whether a property is left or right-handed may differ from plot to plot. Please speak to our sales consultant for specific plot details.

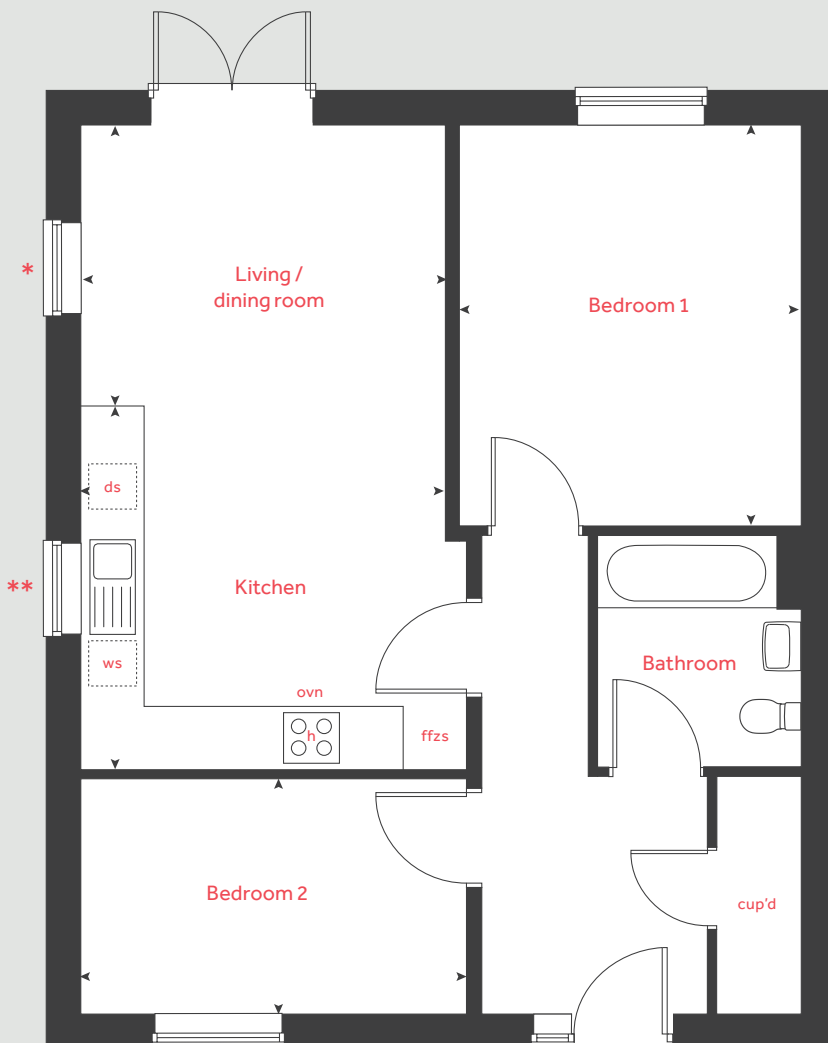
- * Window applies to plots 25, 41, 146 and 147 only.
Please see sales consultant for further details.
- ** Obscured window applies to plots 143 and 150 only.
Please see sales consultant for further details.

Please note, solar panels are provided with each home. Placement on the solar panels are dependent on the roof design and plot position.

Produced by Vistry Group Design Studio.

When you have finished with this leaflet please recycle it.

DS09074 / 10.24



Linden
HOMES



The Wyatt

3 bedroom home

- PV solar panels
- Electric vehicle charging point
- High quality insulation
- Low energy lighting
- Wildflower planting

Little Glen

Cork Lane, Glen Parva, Leicester LE2 9JR | 01162 179893

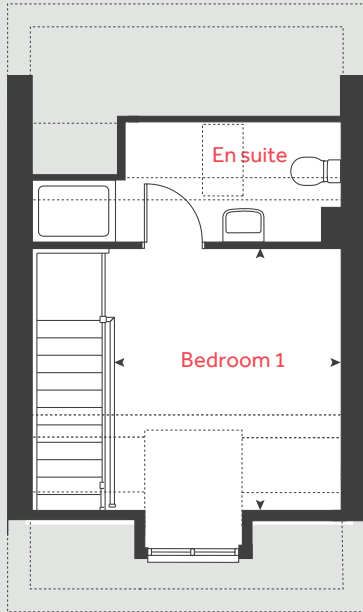
lindenhomes.co.uk

Linden
HOMES

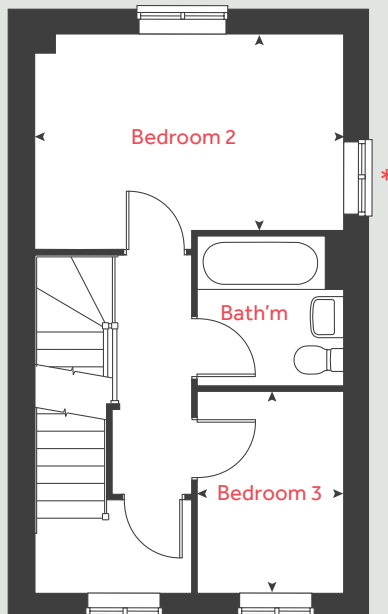
The Wyatt

3 bedroom home

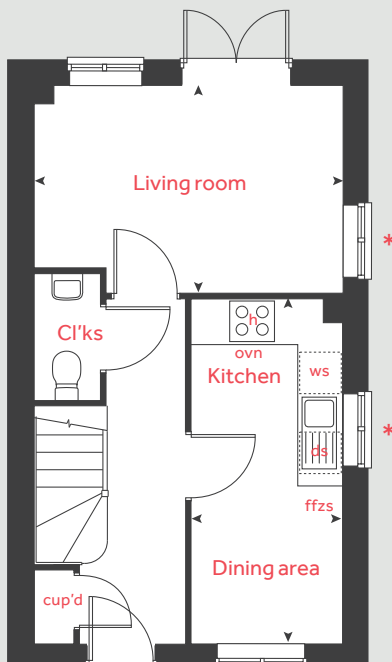
Second floor



First floor



Ground floor



Ground floor	metres	feet / inches
Kitchen / dining area	4.56 x 2.00	15' 0" x 6' 7"
Living room	4.08 x 2.74	13' 5" x 9' 0"

First floor	metres	feet / inches
Bedroom 2	4.08 x 2.58	13' 4" x 8' 5"
Bedroom 3	2.66 x 1.93	8' 8" x 6' 4"

Second floor	metres	feet / inches
Bedroom 1	3.21 x 2.99	10' 5" x 9' 8"

h	hob	ws	washing machine space
ovn	oven	cup'd	cupboard
ffzs	fridge freezer space	◀ ▶	measuring points
ds	dishwasher space		

The Wyatt | Little Glen |

The floorplan has been produced for illustrative purposes only. Room sizes shown are between arrow points as indicated on plan. The dimensions have tolerances of + or - 50mm and should not be used other than for general guidance. If specific dimensions are required, enquiries should be made to the sales consultant. The floor plans shown are not to scale. Measurements are based on the original drawings. Slight variations may occur during construction.

The illustrations shown are computer generated impressions of how the property may look and are indicative only. External details or finishes may vary on individual plots and homes may be built in either detached or attached styles depending on the development layout. Exact specifications, window styles and whether a property is left or right-handed may differ from plot to plot. Please speak to our sales consultant for specific plot details.

* Window applies to plots 96 & 102 only. Please see sales consultant for further details.

Please note, solar panels are provided with each home. Placement on the solar panels are dependent on the roof design and plot position.

Produced by Vistry Group Design Studio.

When you have finished with this leaflet please recycle it.

DS09074 / 10.24

Linden HOMES



The Elliot

3 bedroom home

- PV solar panels
- Electric vehicle charging point
- High quality insulation
- Low energy lighting
- Wildflower planting

Little Glen

Cork Lane, Glen Parva, Leicester LE2 9JR | 01162 179893

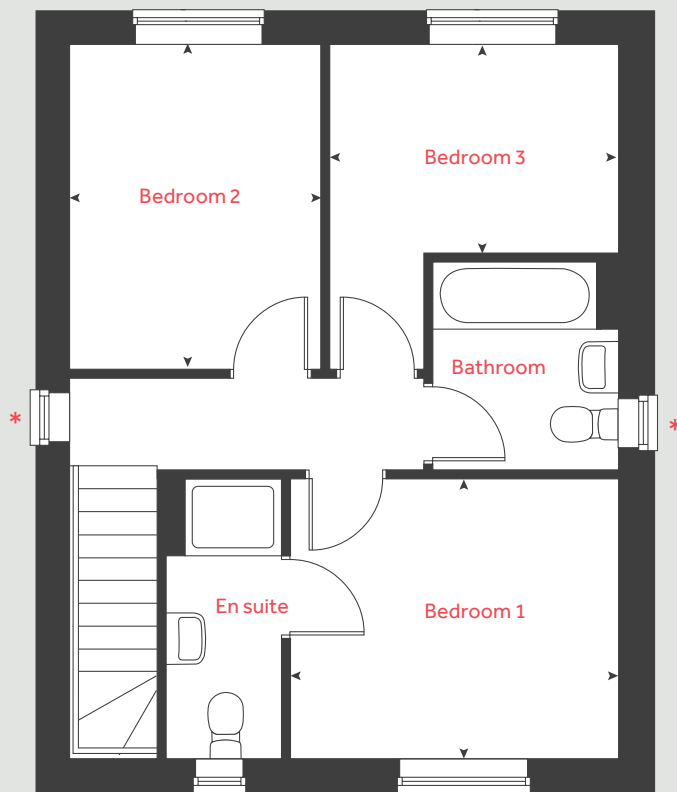
lindenhomes.co.uk

Linden
HOMES

The Elliot

3 bedroom home

First floor



Ground floor	metres	feet / inches
Kitchen	3.30 x 2.96	10' 8" x 9' 7"
Living / dining area	5.75 x 3.96	18' 9" x 13' 0"

First floor	metres	feet / inches
Bedroom 1	3.43 x 3.06	11' 3" x 10' 0"
Bedroom 2	3.20 x 2.59	10' 5" x 8' 5"
Bedroom 3	3.02 x 2.00	9' 9" x 6' 5"

h	hob	ws	washing machine space
ovn	oven	cup'd	cupboard
ffzs	fridge freezer space	◀ ▶	measuring points
ds	dishwasher space		

The Elliot | Little Glen |

The floorplan has been produced for illustrative purposes only. Room sizes shown are between arrow points as indicated on plan. The dimensions have tolerances of + or -50mm and should not be used other than for general guidance. If specific dimensions are required, enquiries should be made to the sales consultant. The floor plans shown are not to scale. Measurements are based on the original drawings. Slight variations may occur during construction.

The illustrations shown are computer generated impressions of how the property may look and are indicative only. External details or finishes may vary on individual plots and homes may be built in either detached or attached styles depending on the development layout. Exact specifications, window styles and whether a property is left or right-handed may differ from plot to plot. Please speak to our sales consultant for specific plot details.

* Window obscured to plots 43, 64, 65, 106 and 141 only.
Please see sales consultant for further details.

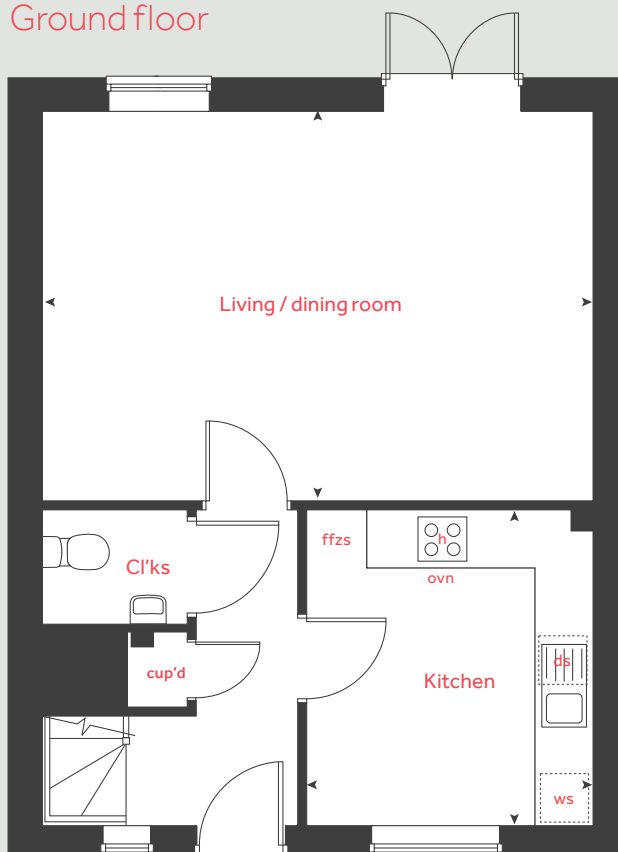
Please note, solar panels are provided with each home. Placement on the solar panels are dependent on the roof design and plot position.

Produced by Vistry Group Design Studio.

When you have finished with this leaflet please recycle it.

DS09074 / 10.24

Ground floor



Linden

HOMES



The Eveleigh

3 bedroom home

- PV solar panels
- Electric vehicle charging point
- High quality insulation
- Low energy lighting
- Wildflower planting

Little Glen

Cork Lane, Glen Parva, Leicester LE2 9JR | 01162 179893

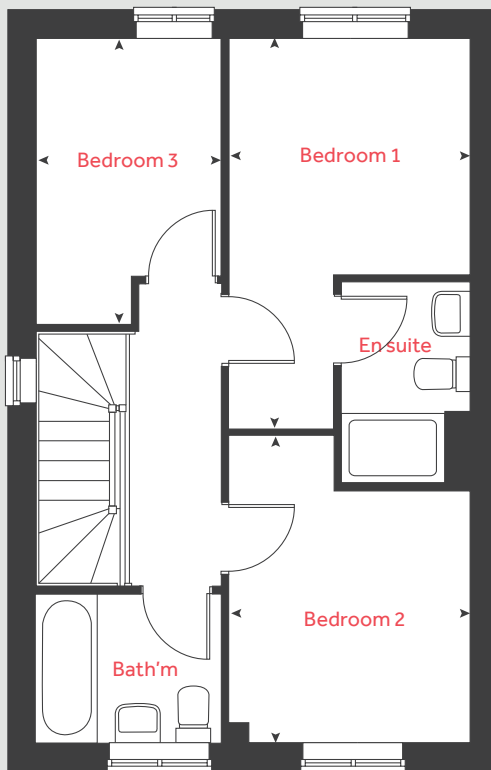
lindenhomes.co.uk

Linden
HOMES

The Eveleigh

3 bedroom home

First floor



Ground floor	metres	feet / inches
Kitchen / dining area	4.78 x 2.80	15' 7" x 9' 2"
Living room	4.95 x 3.19	16' 3" x 10' 5"

First floor	metres	feet / inches
Bedroom 1	4.46 x 2.77	14' 6" x 9' 1"
Bedroom 2	3.51 x 2.77	11' 5" x 9' 1"
Bedroom 3	3.19 x 2.12	10' 6" x 7' 0"

h	hob	ws	washing machine space
ovn	oven	cup'd	cupboard
ffzs	fridge freezer space	◀ ▶	measuring points
ds	dishwasher space		

The Eveleigh | Little Glen |

The floorplan has been produced for illustrative purposes only. Room sizes shown are between arrow points as indicated on plan. The dimensions have tolerances of + or - 50mm and should not be used other than for general guidance. If specific dimensions are required, enquiries should be made to the sales consultant. The floor plans shown are not to scale. Measurements are based on the original drawings. Slight variations may occur during construction.

The illustrations shown are computer generated impressions of how the property may look and are indicative only. External details or finishes may vary on individual plots and homes may be built in either detached or attached styles depending on the development layout. Exact specifications, window styles and whether a property is left or right-handed may differ from plot to plot. Please speak to our sales consultant for specific plot details.

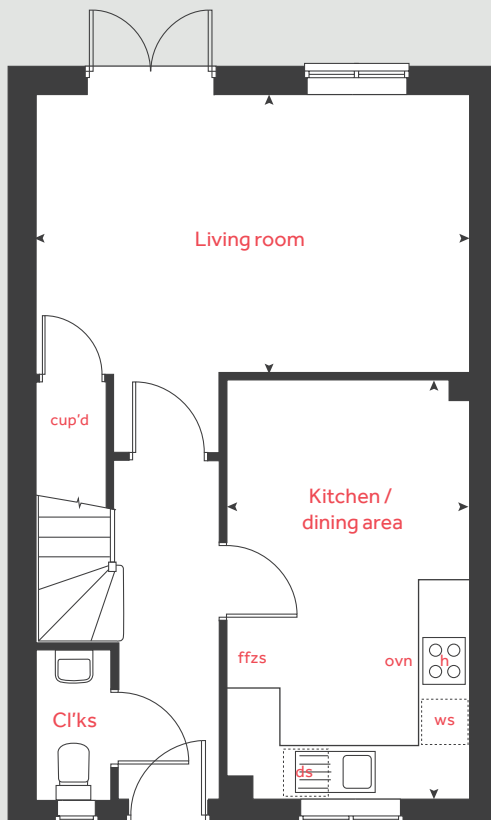
Please note, solar panels are provided with each home. Placement on the solar panels are dependent on the roof design and plot position.

Produced by Vistry Group Design Studio.

When you have finished with this leaflet please recycle it.

DS09074 / 10.24

Ground floor



Linden

HOMES



The Mountford

3 bedroom home
with side garden

- PV solar panels
- Electric vehicle charging point
- High quality insulation
- Low energy lighting
- Wildflower planting

Little Glen

Cork Lane, Glen Parva, Leicester LE2 9JR | 01162 179893

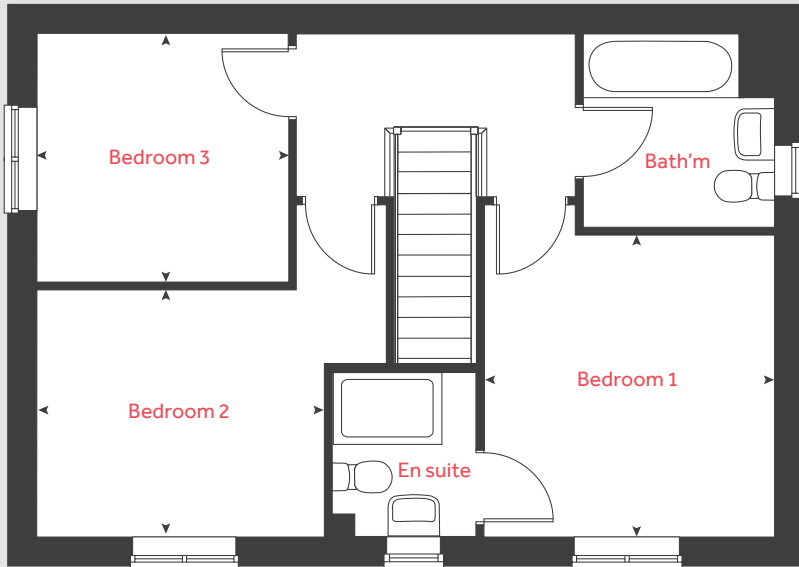
lindenhomes.co.uk

Linden
HOMES

The Mountford

3 bedroom home
with side garden

First floor



Ground floor	metres	feet / inches
Kitchen / dining area	5.59 x 2.70	18' 3" x 8' 9"
Living room	5.59 x 3.14	18' 4" x 10' 3"

First floor

Bedroom 1	3.35 x 3.17	11' 0" x 10' 4"
Bedroom 2	3.14 x 2.74	10' 3" x 9' 0"
Bedroom 3	2.76 x 2.76	9' 1" x 9' 1"

h	hob	ts	tumble dryer space
ovn	oven	ws	washing machine space
ffzs	fridge freezer space	cup'd	cupboard
ds	dishwasher space	◀ ▶	measuring points

The Mountford | Little Glen |

The floorplan has been produced for illustrative purposes only. Room sizes shown are between arrow points as indicated on plan. The dimensions have tolerances of + or - 50mm and should not be used other than for general guidance. If specific dimensions are required, enquiries should be made to the sales consultant. The floor plans shown are not to scale. Measurements are based on the original drawings. Slight variations may occur during construction.

The illustrations shown are computer generated impressions of how the property may look and are indicative only. External details or finishes may vary on individual plots and homes may be built in either detached or attached styles depending on the development layout. Exact specifications, window styles and whether a property is left or right-handed may differ from plot to plot. Please speak to our sales consultant for specific plot details.

1 Utility door applies to selected plots only. Please see sales consultant for further details.

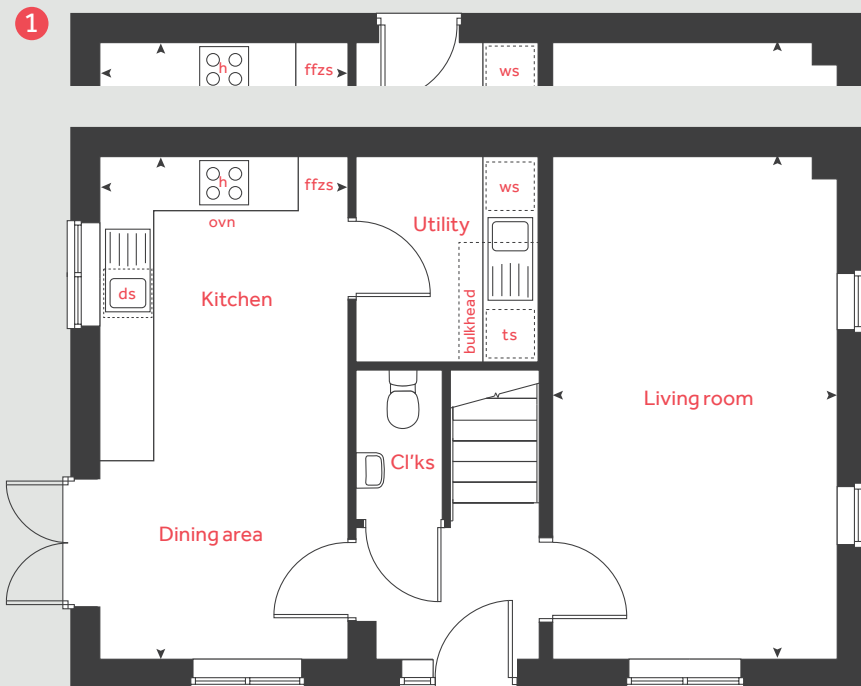
Please note, solar panels are provided with each home. Placement on the solar panels are dependent on the roof design and plot position.

Produced by Vistry Group Design Studio.

When you have finished with this leaflet please recycle it.

DS09074 / 10.24

Ground floor



Linden
HOMES



The Mountford

3 bedroom home
Plot 1

- PV solar panels
- Electric vehicle charging point
- High quality insulation
- Low energy lighting
- Wildflower planting

Little Glen

Cork Lane, Glen Parva, Leicester LE2 9JR | 01162 179893

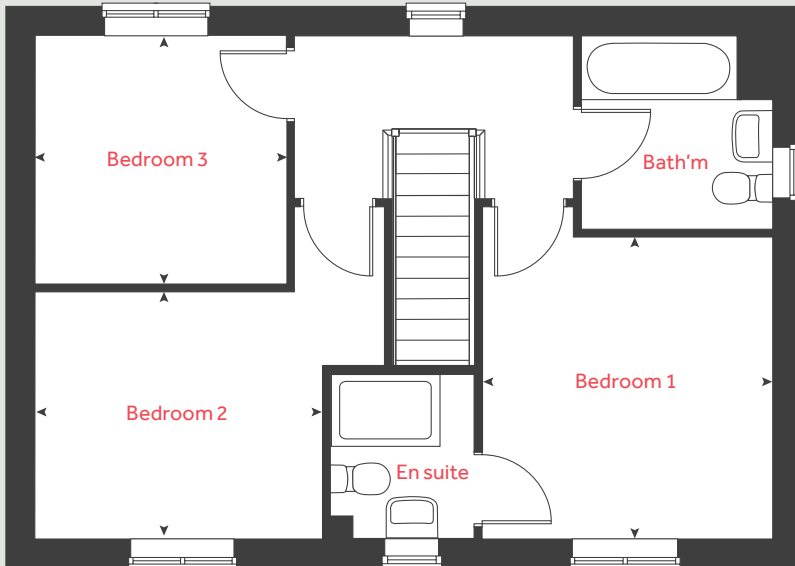
lindenhomes.co.uk

Linden
HOMES

The Mountford

3 bedroom home Plot 1

First floor



Ground floor	metres	feet / inches
Kitchen / dining area	5.59 x 2.70	18' 3" x 8' 9"
Living room	5.59 x 3.14	18' 4" x 10' 3"

First floor

Bedroom 1	3.35 x 3.17	11' 0" x 10' 4"
Bedroom 2	3.14 x 2.74	10' 3" x 9' 0"
Bedroom 3	2.76 x 2.76	9' 1" x 9' 1"

h	hob	ws	washing machine space
ovn	oven	ts	tumble dryer space
ffzs	fridge freezer space	cup'd	cupboard
ds	dishwasher space	◀ ▶	measuring points

The Mountford | Little Glen |

The floorplan has been produced for illustrative purposes only. Room sizes shown are between arrow points as indicated on plan. The dimensions have tolerances of + or -50mm and should not be used other than for general guidance. If specific dimensions are required, enquiries should be made to the sales consultant. The floor plans shown are not to scale. Measurements are based on the original drawings. Slight variations may occur during construction.

The illustrations shown are computer generated impressions of how the property may look and are indicative only. External details or finishes may vary on individual plots and homes may be built in either detached or attached styles depending on the development layout. Exact specifications, window styles and whether a property is left or right-handed may differ from plot to plot. Please speak to our sales consultant for specific plot details.

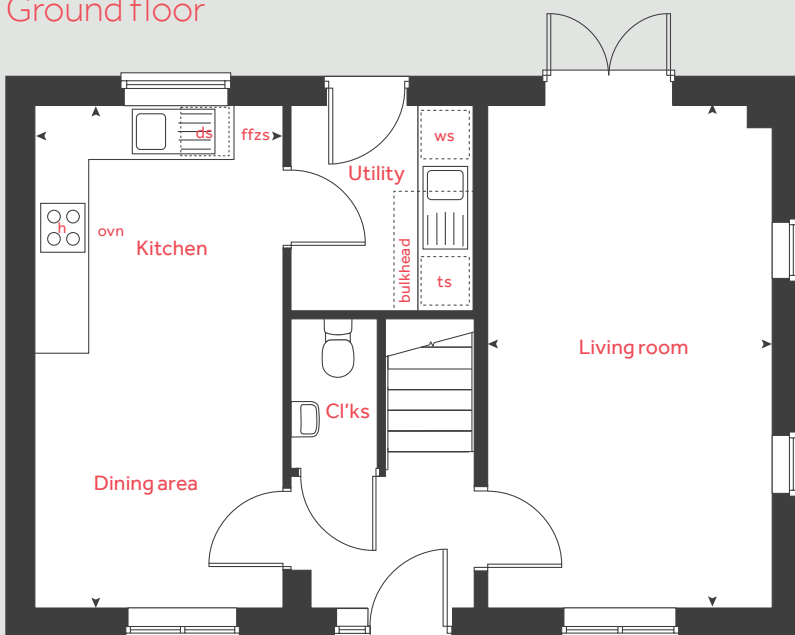
Please note, solar panels are provided with each home. Placement on the solar panels are dependent on the roof design and plot position.

Produced by Vistry Group Design Studio.

When you have finished with this leaflet please recycle it.

DS09074 / 10.24

Ground floor



Linden

HOMES



The Foulston

4 bedroom home

- PV solar panels
- Electric vehicle charging point
- High quality insulation
- Low energy lighting
- Wildflower planting

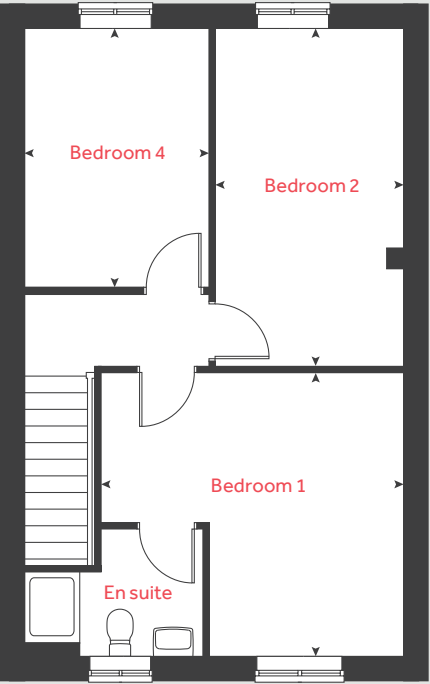
Little Glen

Cork Lane, Glen Parva, Leicester LE2 9JR | 01162 179893

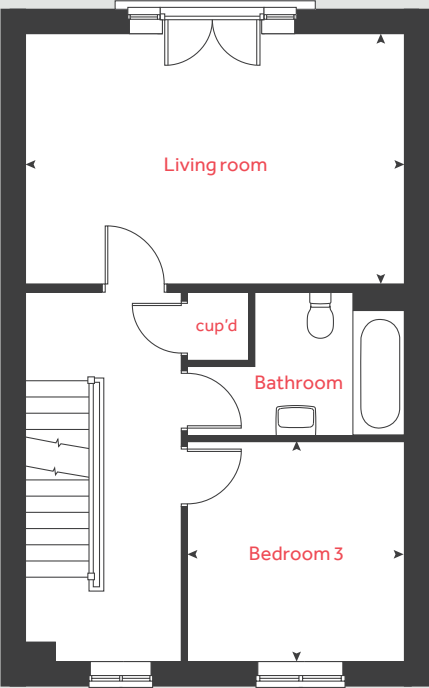
lindenhomes.co.uk

Linden
HOMES

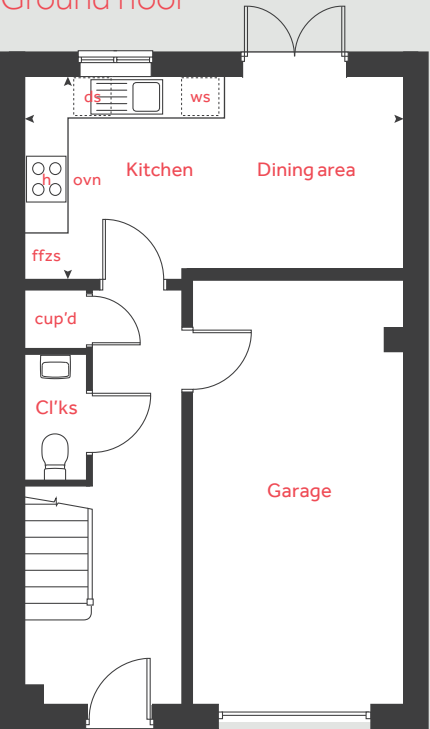
Second floor



First floor



Ground floor



The Foulston

4 bedroom home

Ground floor	metres	feet / inches
Kitchen / dining area	5.32 x 2.68	17' 5" x 8' 8"

First floor	metres	feet / inches
Living room	5.32 x 3.52	17' 5" x 11' 7"
Bedroom 3	3.11 x 3.03	10' 2" x 9' 11"

Second floor	metres	feet / inches
Bedroom 1	4.22 x 4.02	13' 10" x 13' 2"
Bedroom 2	4.72 x 2.62	15' 6" x 8' 7"
Bedroom 4	3.62 x 2.62	11' 10" x 8' 7"

h	hob	ws	washing machine space
ovn	oven	cup'd	cupboard
ffzs	fridge freezer space	w	wardrobe
ds	dishwasher space	◀ ▶	measuring points

The Foulston | Little Glen |

The floorplan has been produced for illustrative purposes only. Room sizes shown are between arrow points as indicated on plan. The dimensions have tolerances of + or -50mm and should not be used other than for general guidance. If specific dimensions are required, enquiries should be made to the sales consultant. The floor plans shown are not to scale. Measurements are based on the original drawings. Slight variations may occur during construction.

The illustrations shown are computer generated impressions of how the property may look and are indicative only. External details or finishes may vary on individual plots and homes may be built in either detached or attached styles depending on the development layout. Exact specifications, window styles and whether a property is left or right-handed may differ from plot to plot. Please speak to our sales consultant for specific plot details.

Please note, solar panels are provided with each home. Placement on the solar panels are dependent on the roof design and plot position.

Produced by Vistry Group Design Studio.

When you have finished with this leaflet please recycle it.

DS09074 / 10.24



The Pembroke

4 bedroom home

- PV solar panels
- Electric vehicle charging point
- High quality insulation
- Low energy lighting
- Wildflower planting

Little Glen

Cork Lane, Glen Parva, Leicester LE2 9JR | 01162 179893

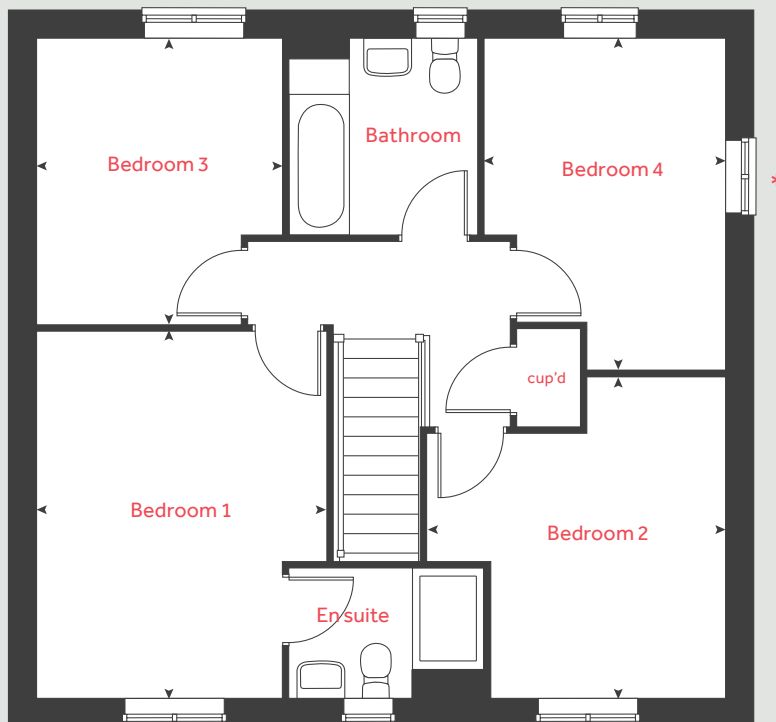
lindenhomes.co.uk

Linden
HOMES

The Pembroke

4 bedroom home

First floor



Ground floor	metres	feet / inches
Kitchen / dining / family area	8.07 x 3.36	26' 6" x 11' 0"
Living room	5.47 x 3.49	18' 0" x 11' 5"
Study	2.40 x 2.35	7' 11" x 7' 9"

First floor	metres	feet / inches
Bedroom 1	4.29 x 3.38	14' 1" x 11' 1"
Bedroom 2	3.72 x 3.46	12' 2" x 11' 4"
Bedroom 3	3.38 x 2.86	11' 1" x 9' 4"
Bedroom 4	3.93 x 2.81	12' 9" x 9' 2"

h	hob	ts	tumble dryer space
ovn	oven	ws	washing machine space
ffzs	fridge freezer space	cup'd	cupboard
ds	dishwasher space	◀ ▶	measuring points

The Pembroke | Little Glen |

The floorplan has been produced for illustrative purposes only. Room sizes shown are between arrow points as indicated on plan. The dimensions have tolerances of + or - 50mm and should not be used other than for general guidance. If specific dimensions are required, enquiries should be made to the sales consultant. The floor plans shown are not to scale. Measurements are based on the original drawings. Slight variations may occur during construction.

The illustrations shown are computer generated impressions of how the property may look and are indicative only. External details or finishes may vary on individual plots and homes may be built in either detached or attached styles depending on the development layout. Exact specifications, window styles and whether a property is left or right-handed may differ from plot to plot. Please speak to our sales consultant for specific plot details.

* Windows apply to plots 3, 29, 80, 121, 151 and an *obscure window* to plot 152 only. Please see sales consultant for further details.

** Window applies to plot 81 only. Please see sales consultant for further details

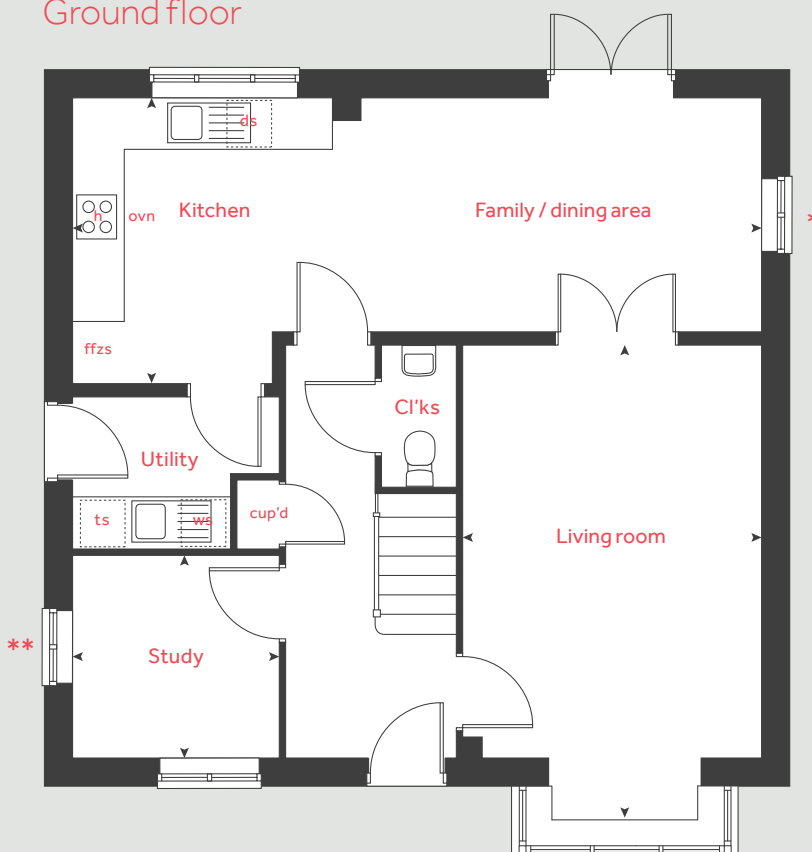
Please note, solar panels are provided with each home. Placement on the solar panels are dependent on the roof design and plot position.

Produced by Vistry Group Design Studio.

When you have finished with this leaflet please recycle it.

DS09074 / 10.24

Ground floor



Linden

HOMES



The Pembroke

4 bedroom home

- PV solar panels
- Electric vehicle charging point
- High quality insulation
- Low energy lighting
- Wildflower planting

Little Glen

Cork Lane, Glen Parva, Leicester LE2 9JR | 01162 179893

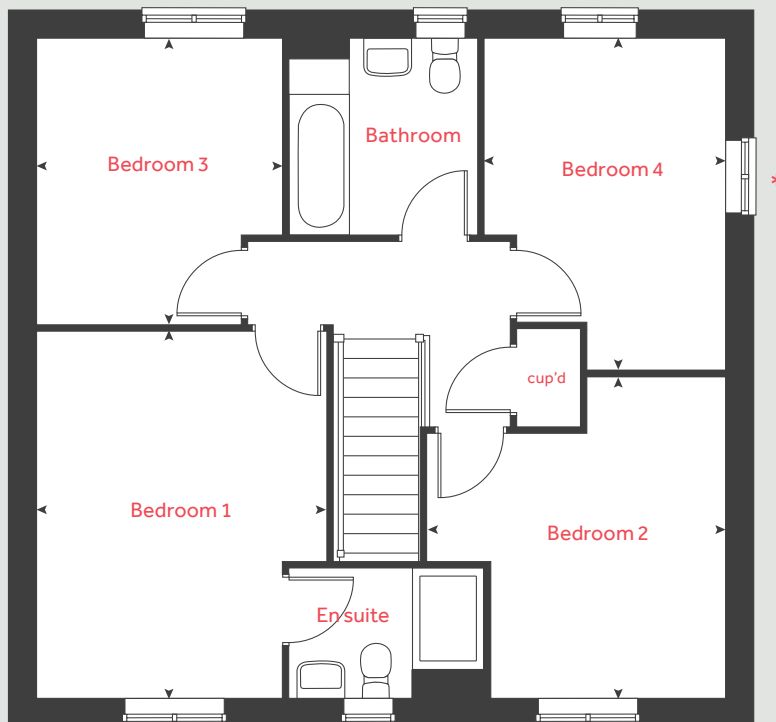
lindenhomes.co.uk

Linden
HOMES

The Pembroke

4 bedroom home

First floor



Ground floor	metres	feet / inches
Kitchen / dining / family area	8.07 x 3.36	26' 6" x 11' 0"
Living room	5.47 x 3.49	18' 0" x 11' 5"
Study	2.40 x 2.35	7' 11" x 7' 9"

First floor	metres	feet / inches
Bedroom 1	4.29 x 3.38	14' 1" x 11' 1"
Bedroom 2	3.72 x 3.46	12' 2" x 11' 4"
Bedroom 3	3.38 x 2.86	11' 1" x 9' 4"
Bedroom 4	3.93 x 2.81	12' 9" x 9' 2"

h	hob	ts	tumble dryer space
ovn	oven	ws	washing machine space
ffzs	fridge freezer space	cup'd	cupboard
ds	dishwasher space	◀ ▶	measuring points

The Pembroke | Little Glen |

The floorplan has been produced for illustrative purposes only. Room sizes shown are between arrow points as indicated on plan. The dimensions have tolerances of + or - 50mm and should not be used other than for general guidance. If specific dimensions are required, enquiries should be made to the sales consultant. The floor plans shown are not to scale. Measurements are based on the original drawings. Slight variations may occur during construction.

The illustrations shown are computer generated impressions of how the property may look and are indicative only. External details or finishes may vary on individual plots and homes may be built in either detached or attached styles depending on the development layout. Exact specifications, window styles and whether a property is left or right-handed may differ from plot to plot. Please speak to our sales consultant for specific plot details.

* Windows apply to plots 3, 29, 80, 121, 151 and an *obscure window* to plot 152 only. Please see sales consultant for further details.

** Window applies to plot 81 only. Please see sales consultant for further details

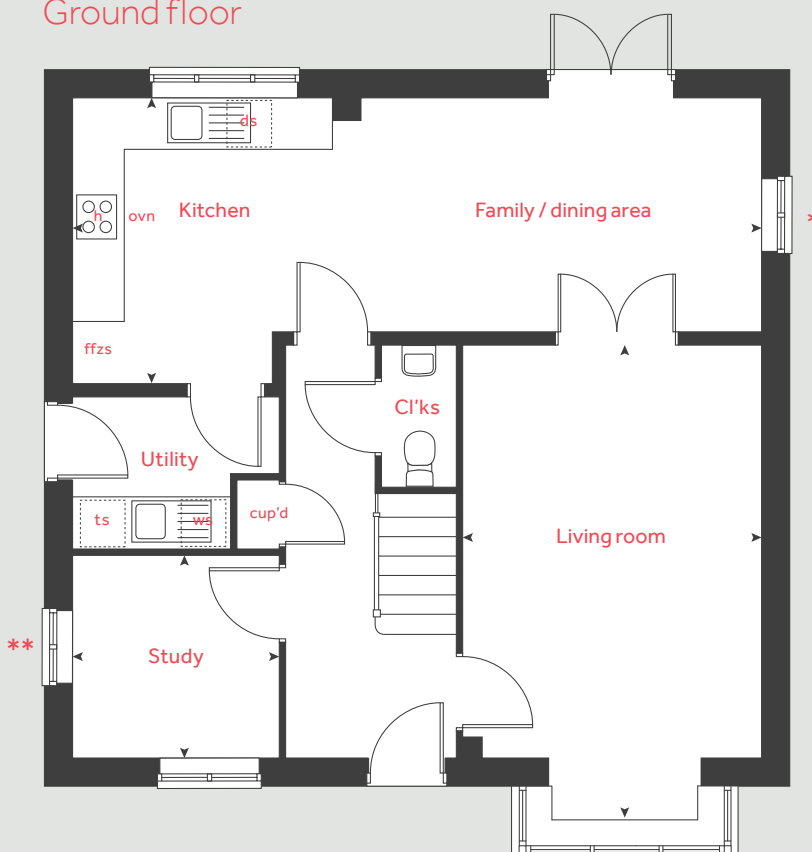
Please note, solar panels are provided with each home. Placement on the solar panels are dependent on the roof design and plot position.

Produced by Vistry Group Design Studio.

When you have finished with this leaflet please recycle it.

DS09074 / 10.24

Ground floor



Linden

HOMES



The Grainger

4 bedroom home

- PV solar panels
- Electric vehicle charging point
- High quality insulation
- Low energy lighting
- Wildflower planting

Little Glen

Cork Lane, Glen Parva, Leicester LE2 9JR | 01162 179893

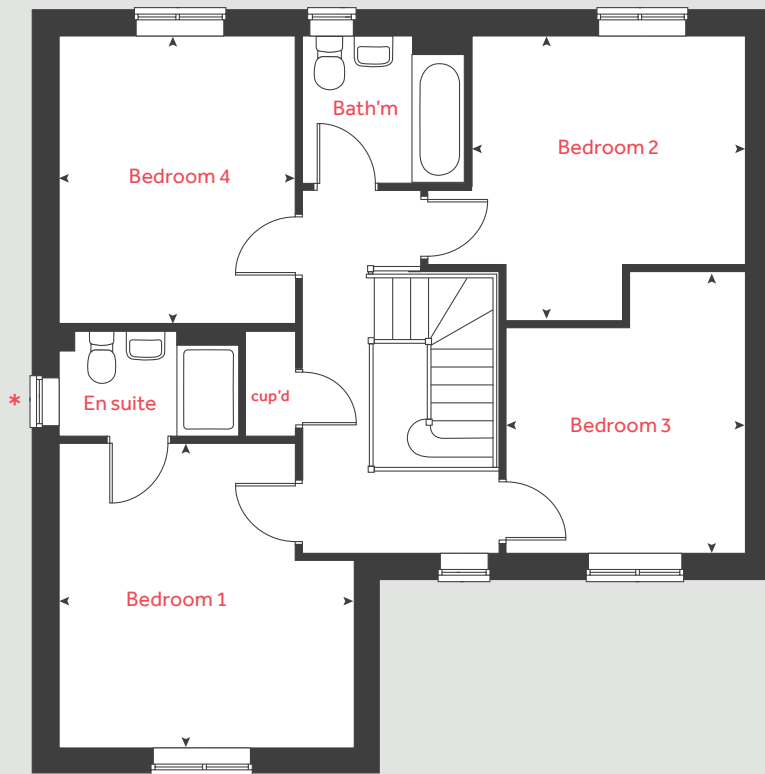
lindenhomes.co.uk

Linden
HOMES

The Grainger

4 bedroom home

First floor



Ground floor	metres	feet / inches
Kitchen / dining room	5.85 x 3.62	19' 2" x 11' 8"
Living room	4.39 x 3.90	14' 5" x 12' 10"

First floor

Bedroom 1	4.01 x 3.90	13' 2" x 12' 10"
Bedroom 2	3.69 x 3.58	12' 10" x 11' 8"
Bedroom 3	3.64 x 3.14	12' 0" x 10' 3"
Bedroom 4	3.79 x 3.11	12' 5" x 10' 3"

h	hob	ws	washing machine space
ovn	oven	cup'd	cupboard
ffzr	fridge freezer	◀ ▶	measuring points
ds	dishwasher space		

The Grainger | Little Glen |

The floorplan has been produced for illustrative purposes only. Room sizes shown are between arrow points as indicated on plan. The dimensions have tolerances of + or -50mm and should not be used other than for general guidance. If specific dimensions are required, enquiries should be made to the sales consultant. The floor plans shown are not to scale. Measurements are based on the original drawings. Slight variations may occur during construction.

The illustrations shown are computer generated impressions of how the property may look and are indicative only. External details or finishes may vary on individual plots and homes may be built in either detached or attached styles depending on the development layout. Exact specifications, window styles and whether a property is left or right-handed may differ from plot to plot. Please speak to our sales consultant for specific plot details.

* Window to plots 58 & 63 are fixed and cannot be opened. Please see sales consultant for further details.

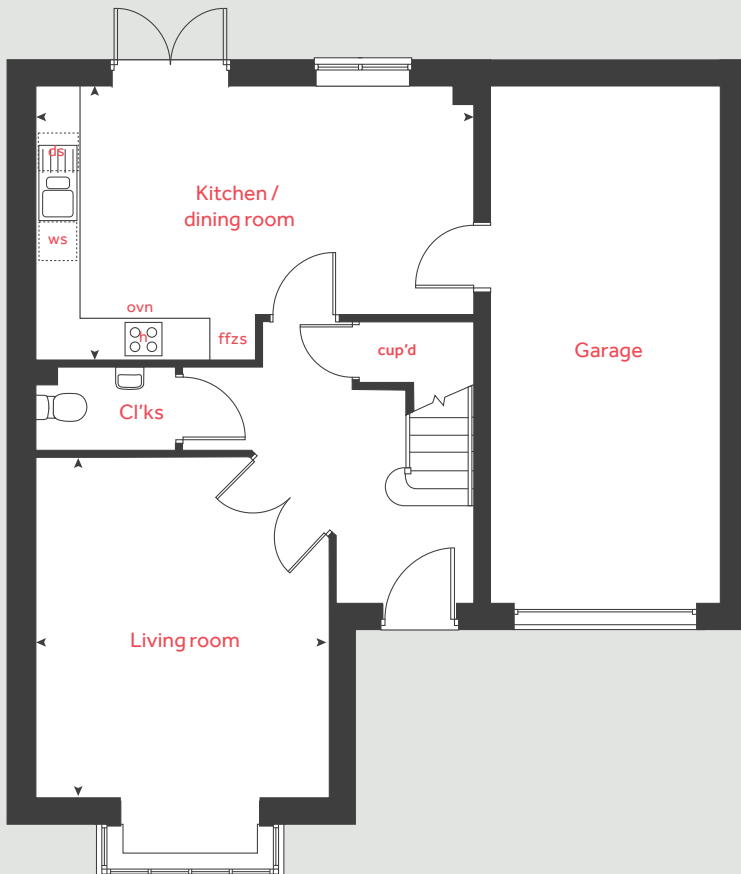
Please note, solar panels are provided with each home. Placement on the solar panels are dependent on the roof design and plot position.

Produced by Vistry Group Design Studio.

When you have finished with this leaflet please recycle it.

DS09074 / 10.24

Ground floor



Linden

HOMES



The Kempthorne

4 bedroom home

- PV solar panels
- Electric vehicle charging point
- High quality insulation
- Low energy lighting
- Wildflower planting

Little Glen

Cork Lane, Glen Parva, Leicester LE2 9JR | 01162 179893

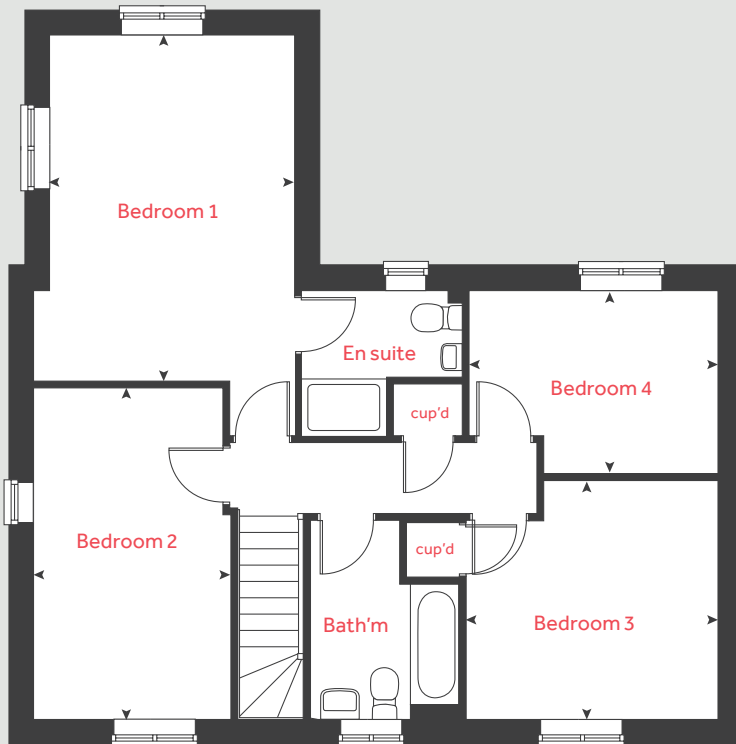
lindenhomes.co.uk

Linden
HOMES

The Kempthorne

4 bedroom home

First floor



Ground floor	metres	feet / inches
Kitchen / diningroom	5.57 x 3.45	18' 2" x 11' 3"
Living room	6.04 x 3.85	19' 10" x 12' 8"
Study	2.78 x 2.56	9' 1" x 8' 5"

First floor

Bedroom 1	4.87 x 3.45	16' 0" x 11' 3"
Bedroom 2	4.67 x 2.76	15' 3" x 9' 0"
Bedroom 3	3.53 x 3.48	11' 6" x 11' 4"
Bedroom 4	3.49 x 2.47	11' 5" x 8' 1"

h	hob	ws	washing machine space
ovn	oven	ts	tumble dryer space
ffzs	fridge freezer space	cup'd	cupboard
ds	dishwasher space	◀ ▶	measuring points

The Kempthorne | Little Glen |

The floorplan has been produced for illustrative purposes only. Room sizes shown are between arrow points as indicated on plan. The dimensions have tolerances of + or -50mm and should not be used other than for general guidance. If specific dimensions are required, enquiries should be made to the sales consultant. The floor plans shown are not to scale. Measurements are based on the original drawings. Slight variations may occur during construction.

The illustrations shown are computer generated impressions of how the property may look and are indicative only. External details or finishes may vary on individual plots and homes may be built in either detached or attached styles depending on the development layout. Exact specifications, window styles and whether a property is left or right-handed may differ from plot to plot. Please speak to our sales consultant for specific plot details.

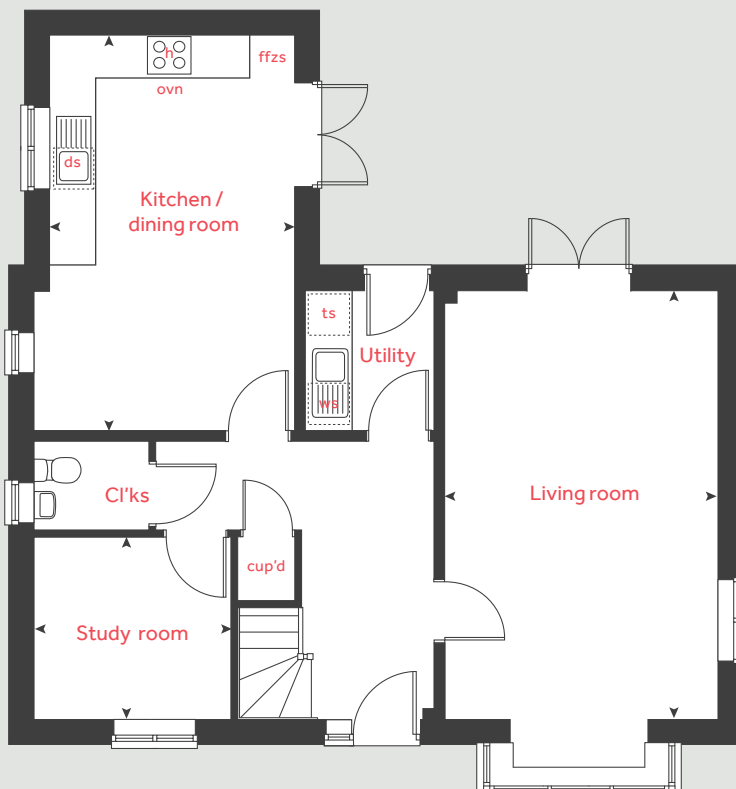
Please note, solar panels are provided with each home. Placement on the solar panels are dependent on the roof design and plot position.

Produced by Vistry Group Design Studio.

When you have finished with this leaflet please recycle it.

DS09074 / 10.24

Ground floor



Linden
HOMES



The Cottingham

4 bedroom home

- PV solar panels
- Electric vehicle charging point
- High quality insulation
- Low energy lighting
- Wildflower planting

Little Glen

Cork Lane, Glen Parva, Leicester LE2 9JR | 01162 179893

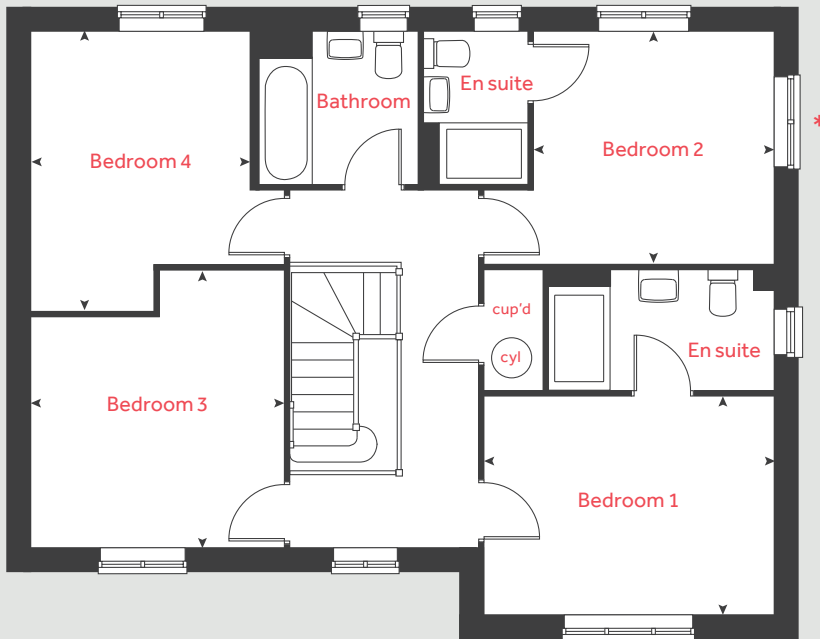
lindenhomes.co.uk

Linden
HOMES

The Cottingham

4 bedroom home

First floor



Ground floor	metres	feet / inches
Kitchen / dining / family area	9.97 x 3.09	32' 8" x 10' 1"
Living room	5.25 x 4.20	17' 2" x 13' 8"
Study	2.24 x 2.10	7' 3" x 6' 9"

First floor

Bedroom 1	3.90 x 3.15	12' 9" x 10' 4"
Bedroom 2	3.23 x 3.14	10' 7" x 10' 4"
Bedroom 3	3.73 x 3.38	12' 3" x 11' 1"
Bedroom 4	3.73 x 2.93	12' 2" x 9' 7"

h	hob	ws	washing machine space
ovn	oven	cup'd	cupboard
ffzs	fridge freezer space	cyl	hot water cylinder
ds	dishwasher space	◀ ▶	measuring points
ts	tumble dryer space		

The Cottingham | Little Glen |

The floorplan has been produced for illustrative purposes only. Room sizes shown are between arrow points as indicated on plan. The dimensions have tolerances of + or -50mm and should not be used other than for general guidance. If specific dimensions are required, enquiries should be made to the sales consultant. The floor plans shown are not to scale. Measurements are based on the original drawings. Slight variations may occur during construction.

The illustrations shown are computer generated impressions of how the property may look and are indicative only. External details or finishes may vary on individual plots and homes may be built in either detached or attached styles depending on the development layout. Exact specifications, window styles and whether a property is left or right-handed may differ from plot to plot. Please speak to our sales consultant for specific plot details.

- * Window apply to plot 61 only. Please see sales consultant for further details.
- ** Window applies to plots 108 & 126 and an obscure window to plots 103 & 125 only. Please see sales consultant for further details.

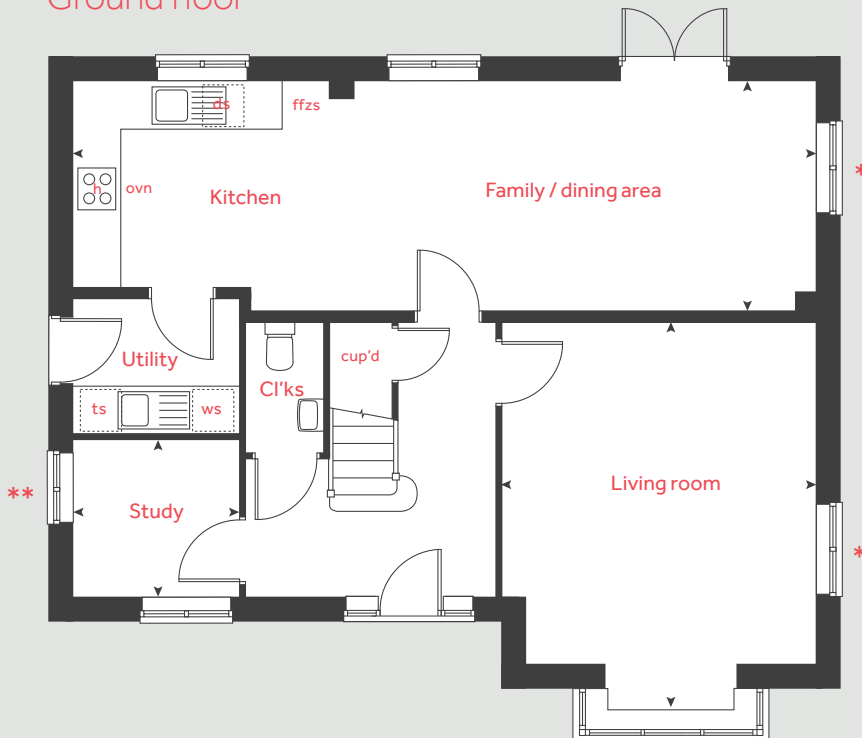
Please note, solar panels are provided with each home. Placement on the solar panels are dependent on the roof design and plot position.

Produced by Vistry Group Design Studio.

When you have finished with this leaflet please recycle it.

DS09074 / 10.24

Ground floor



Linden

HOMES



Specification

Little Glen

Cork Lane, Glen Parva, Leicester LE2 9JR | 01162 179893

lindenhomes.co.uk

Linden
HOMES

Little Glen

Glen Parva

Use this guide to see what features are included in your new home. Your sales consultant will be happy to discuss the **Enhance** range of extras available.

	2 bedroom		3 bedroom		4 bedroom	
	The Hardwick	The Langton	The Eveleigh	The Wyatt	The Mountford	The Elliot
Kitchen						
Symphony Konzept range kitchen	<input checked="" type="checkbox"/>	<input checked="" type="checkbox"/>	<input checked="" type="checkbox"/>	<input checked="" type="checkbox"/>	<input checked="" type="checkbox"/>	<input checked="" type="checkbox"/>
Stainless steel sink and drainer (single bowl) with chrome mixer tap	<input checked="" type="checkbox"/>	<input checked="" type="checkbox"/>	<input checked="" type="checkbox"/>	<input checked="" type="checkbox"/>	<input checked="" type="checkbox"/>	<input checked="" type="checkbox"/>
Stainless steel sink and drainer (single bowl) with chrome mixer tap in utility			<input checked="" type="checkbox"/>			<input checked="" type="checkbox"/>
Hob (60 cm) with built-in single under oven, with stainless steel splashback and 60cm stainless steel chimney hood	<input checked="" type="checkbox"/>	<input checked="" type="checkbox"/>	<input checked="" type="checkbox"/>	<input checked="" type="checkbox"/>	<input checked="" type="checkbox"/>	<input checked="" type="checkbox"/>
Fridge / freezer space	<input checked="" type="checkbox"/>	<input checked="" type="checkbox"/>	<input checked="" type="checkbox"/>	<input checked="" type="checkbox"/>	<input checked="" type="checkbox"/>	<input checked="" type="checkbox"/>
Space for dishwasher with plumbing and electrics	<input checked="" type="checkbox"/>	<input checked="" type="checkbox"/>	<input checked="" type="checkbox"/>	<input checked="" type="checkbox"/>	<input checked="" type="checkbox"/>	<input checked="" type="checkbox"/>
Space for washing machine with plumbing and electrics	<input checked="" type="checkbox"/>	<input checked="" type="checkbox"/>	<input checked="" type="checkbox"/>	<input checked="" type="checkbox"/>		
Space for washing machine and dryer with plumbing and electrics in utility			<input checked="" type="checkbox"/>			<input checked="" type="checkbox"/>
Bathrooms and en suite(s)						
Ideal Standard contemporary white sanitary ware	<input checked="" type="checkbox"/>	<input checked="" type="checkbox"/>	<input checked="" type="checkbox"/>	<input checked="" type="checkbox"/>	<input checked="" type="checkbox"/>	<input checked="" type="checkbox"/>
Shower tray with glass enclosure in en suite			<input checked="" type="checkbox"/>	<input checked="" type="checkbox"/>	<input checked="" type="checkbox"/>	<input checked="" type="checkbox"/>
Shower over the bath	<input checked="" type="checkbox"/>	<input checked="" type="checkbox"/>				
Choice of standard Saloni wall tiling (splashback above sinks, 450mm height over bath, and full-height to shower cubicle)*			<input checked="" type="checkbox"/>	<input checked="" type="checkbox"/>	<input checked="" type="checkbox"/>	<input checked="" type="checkbox"/>
Full height Saloni tiling around bath with splashback above sink	<input checked="" type="checkbox"/>	<input checked="" type="checkbox"/>				
Doors and Windows						
Front door with multi-point security locking system and security chain	<input checked="" type="checkbox"/>	<input checked="" type="checkbox"/>	<input checked="" type="checkbox"/>	<input checked="" type="checkbox"/>	<input checked="" type="checkbox"/>	<input checked="" type="checkbox"/>
PVCu double glazing to windows	<input checked="" type="checkbox"/>	<input checked="" type="checkbox"/>	<input checked="" type="checkbox"/>	<input checked="" type="checkbox"/>	<input checked="" type="checkbox"/>	<input checked="" type="checkbox"/>
Double glazed PVCu French doors	<input checked="" type="checkbox"/>	<input checked="" type="checkbox"/>	<input checked="" type="checkbox"/>	<input checked="" type="checkbox"/>	<input checked="" type="checkbox"/>	<input checked="" type="checkbox"/>

☒ Fitted as standard - included in the property
* Subject to stage of construction

[illegible]

The specification shown is correct at the time of production. Linden Homes is continually reviewing and updating the specification on all house / apartment types and therefore reserves the right to change specification details. Photographs depict typical Linden Homes interiors and may include optional upgrades. For full details regarding the current specification and finishes, please speak to our sales consultant

Vistry South East Midlands region

Penman House, 1 Penman Way, Grove Park, Enderby, Leicester, Leicestershire LE19 1SY. Telephone: 01164 648 821

Produced by the Vistry Group Design Studio. When you have finished with this leaflet please recycle it.

DS13655 / 03.25

lindenhomes.co.uk

Linden
HOMES