

Hubbard's Walk

Louth



Linden
HOMES



Hubbard's Walk Louth

A collection of 2, 3 & 4 bedroom homes in a quaint rural area.

Looking for a new build home that lets you get away from it all but still has a sense of community and all the essentials you need to get by during the day to day? Linden Homes' Hubbard's Walk new housing development in Louth should tick all your boxes.

In Louth, find a wide range of independent shops, a market, plus plenty of rustic pubs perfect for whiling away an evening or enjoying a delicious Sunday lunch.

The town has lots of sports and leisure options as well, and sights like Hubbard's Hills park within walking distance.

Our new homes in Louth have a wide range of options available in terms of schooling, with plenty of highly rated institutions nearby.

The town is located close to the A16 main road, which runs from Grimsby in the north (40 minutes) to Boston in the south (50 minutes), while if you head across the Lincolnshire Wolds and join the A46 or A158, you can get to Lincoln within 45 minutes.

If you wish to use public transport from Louth, bus services run frequently until 7pm to Grimsby, Skegness, Lincoln and Mablethorpe. Trains can be caught from Market Rasen, Skegness and Grimsby, heading out from the wider region.

Hubbard's Walk

Louth LN11 8LQ | 01507 598 070

lindenhomes.co.uk/hubbardswalk

Linden
HOMES

Development layout



4 bedroom home

- The Leverton
- The Mylne

3 bedroom home

- The Eveleigh
- The Mountford
- The Elmslie

2 bedroom home

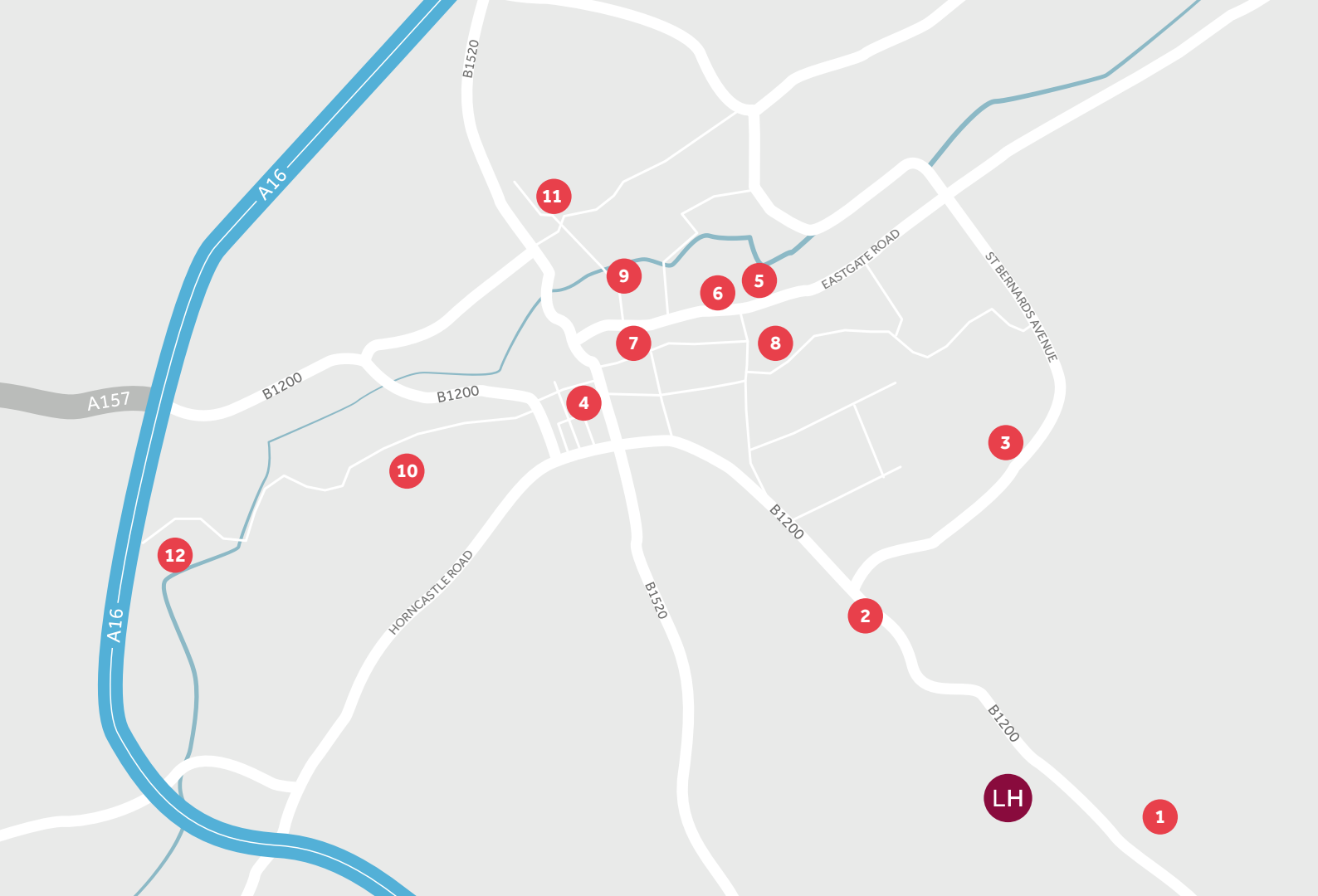
- The Harcourt

Pre-sold homes

- 2 bedroom homes
- 3 bedroom homes

- | | | | |
|----|----------------------|---|-----------------------|
| bc | bin collection point | ▶ | garage entrance |
| ss | sub station | v | visitor parking space |

This plan has been produced for home identification purposes only and is not to scale. The development layout, landscaping and tenure of all dwellings may be subject to change throughout the course of the development. Finishes and materials may vary from those shown on the plan. Please check the details of your chosen plot and house type with the sales consultant. Development layout plan correct at time of production.



Around the local neighbourhood

- | | | | | | |
|---|-------------------------|---|-------------------------------|----|-----------------------------|
| 1 | Louth Garden Centre | 5 | Morrisons Supermarket | 9 | Louth Museum |
| 2 | Sports Ground | 6 | Bus Station | 10 | Louth Golf Club |
| 3 | Meridian Leisure Centre | 7 | Market Place | 11 | County Hospital |
| 4 | Louth Academy | 8 | King Edward VI Grammar School | 12 | Hubbard's Hill Country Park |

Distances shown are by road (Source: Google). Fastest journey times are shown (Source: National Rail Enquiries).
1345083/May 2021.

[lindenhomes.co.uk/hubbardswalk](https://www.lindenhomes.co.uk/hubbardswalk)

Linden
HOMES



The Mylne 4 bedroom home

Hubbard's Walk

Louth LN11 8LQ | 01507 598 070

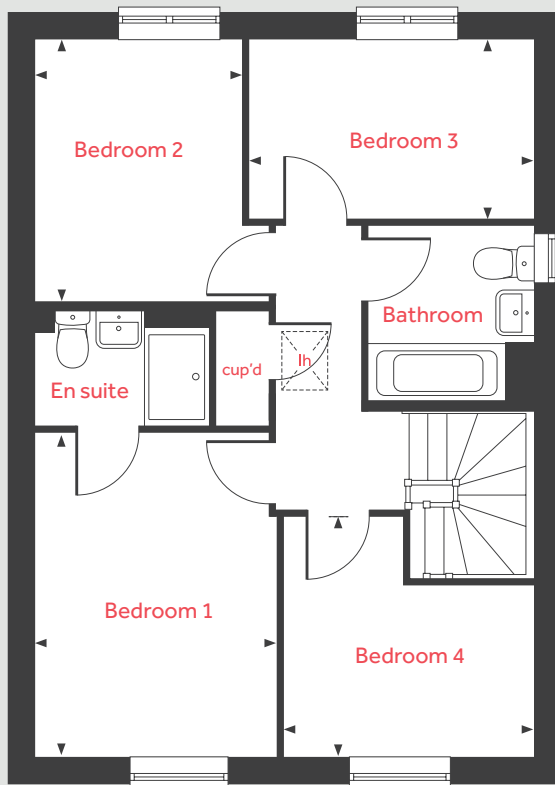
lindenhomes.co.uk

Linden
HOMES

The Mylne

4 bedroom home

First floor



Ground floor

Living room

4.83m x 3.39m 15'10" x 11'1"

Kitchen / dining / family area

6.04m x 4.37m 19'9" x 14'4"

First floor

Bedroom 1

3.95m x 3.46m 12'11" x 11'4"

Bedroom 2

3.20m x 2.57m 10'6" x 8'5"

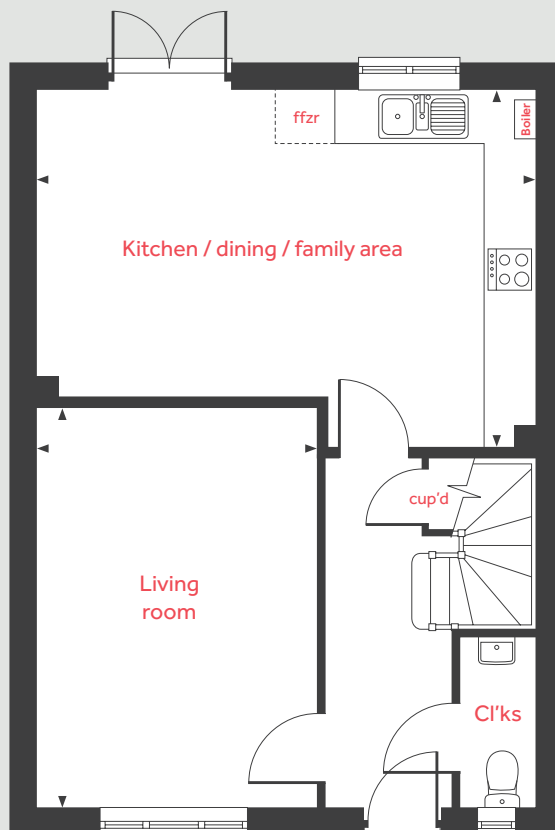
Bedroom 3

3.39m x 2.20m 11'1" x 7'3"

Bedroom 4

3.10m x 2.10m 10'2" x 6'11"

Ground floor



lh	loft hatch	ffzr	fridge freezer space
cup'd	cupboard	◀ ▶	measuring points

The illustrations shown are computer generated impressions of how the property may look and are indicative only. External details or finishes may vary on individual plots and homes may be built in either detached or attached styles depending on the development layout. Exact specifications, window styles and whether a property is left or right handed may differ from plot to plot. Please speak to our sales consultant for specific plot details.

The floorplan has been produced for illustrative purposes only. Room sizes shown are between arrow points as indicated on plan. The dimensions have tolerances of + or -50mm and should not be used other than for general guidance. If specific dimensions are required, enquiries should be made to the sales consultant. The floor plans shown are not to scale. Measurements are based on the original drawings. Slight variations may occur during construction.

Linden
HOMES



The Eveleigh 3 bedroom home

Hubbard's Walk

Louth LN11 8LQ | 01507 598 070

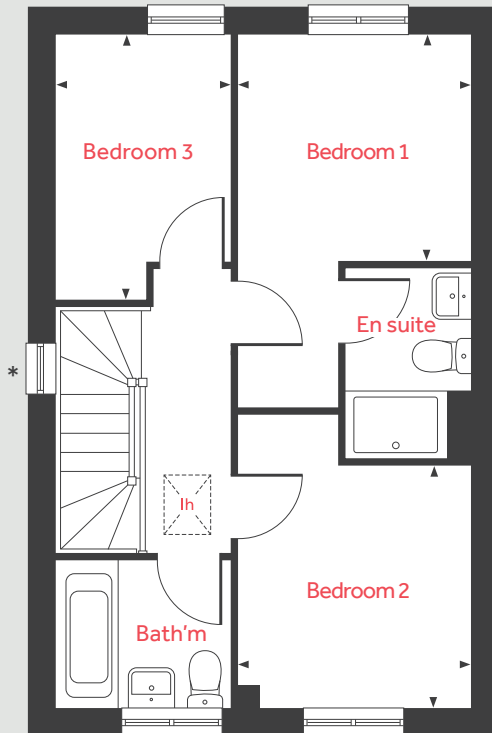
lindenhomes.co.uk

Linden
HOMES

The Eveleigh

3 bedroom home

First floor



Ground floor

Living room

4.98m x 3.20m 16'4" x 10'6"

Kitchen / dining area

4.78m x 2.80m 15'8" x 9'2"

First floor

Bedroom 1

2.78m x 2.72m 9'1" x 8'11"

Bedroom 2

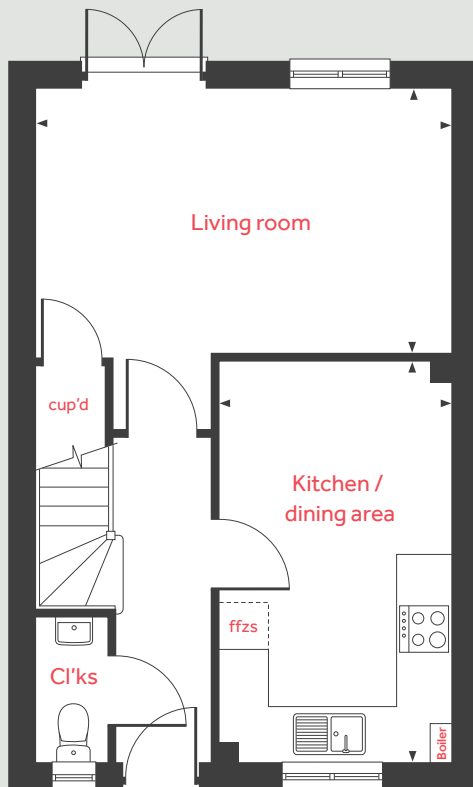
2.90m x 2.78m 9'6" x 9'1"

Bedroom 3

3.20m x 2.12m 10'6" x 6'11"

lh	loft hatch	ffzs	fridge freezer space
cup'd	cupboard	◀ ▶	measuring points

Ground floor



The illustrations shown are computer generated impressions of how the property may look and are indicative only. External details or finishes may vary on individual plots and homes may be built in either detached or attached styles depending on the development layout. Exact specifications, window styles and whether a property is left or right handed may differ from plot to plot. Please speak to our sales consultant for specific plot details.

The floorplan has been produced for illustrative purposes only. Room sizes shown are between arrow points as indicated on plan. The dimensions have tolerances of + or -50mm and should not be used other than for general guidance. If specific dimensions are required, enquiries should be made to the sales consultant. The floor plans shown are not to scale. Measurements are based on the original drawings. Slight variations may occur during construction.

Linden
HOMES



The Harcourt 2 bedroom home

Hubbard's Walk

Louth LN11 8LQ | 01507 598 070

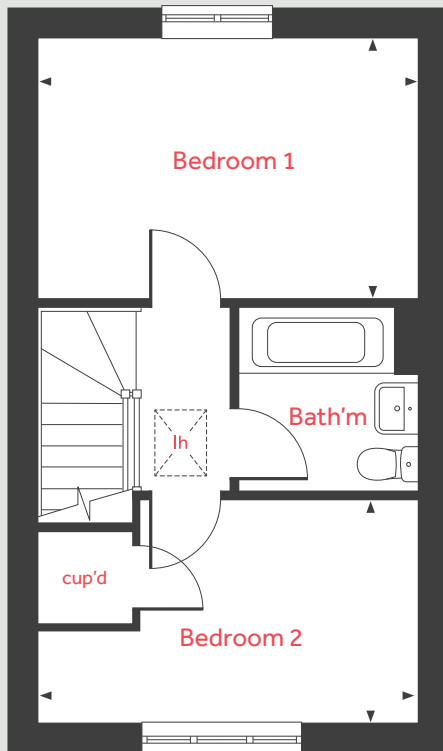
lindenhomes.co.uk

Linden
HOMES

The Harcourt

2 bedroom home

First floor



Ground floor

Living room

4.08m x 2.75m 13'4" x 9'0"

Kitchen / dining area

4.56m x 2.00m 14'11" x 6'7"

First floor

Bedroom 1

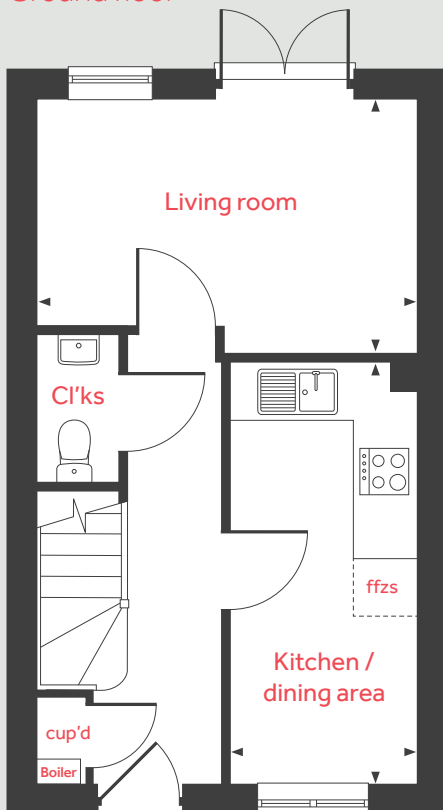
4.08m x 2.84m 13'4" x 9'4"

Bedroom 2

4.08m x 2.41m 13'4" x 7'11"

lh	loft hatch	ffzs	fridge freezer space
cup'd	cupboard	◀ ▶	measuring points

Ground floor



The illustrations shown are computer generated impressions of how the property may look and are indicative only. External details or finishes may vary on individual plots and homes may be built in either detached or attached styles depending on the development layout. Exact specifications, window styles and whether a property is left or right handed may differ from plot to plot. Please speak to our sales consultant for specific plot details.

The floorplan has been produced for illustrative purposes only. Room sizes shown are between arrow points as indicated on plan. The dimensions have tolerances of + or -50mm and should not be used other than for general guidance. If specific dimensions are required, enquiries should be made to the sales consultant. The floor plans shown are not to scale. Measurements are based on the original drawings. Slight variations may occur during construction.

Linden

HOMES



The Mountford 3 bedroom home

Hubbard's Walk

Louth LN11 8LQ | 01507 598 070

lindenhomes.co.uk

Linden
HOMES

The Mountford

3 bedroom home

First floor



Ground floor

Living room

5.59m x 3.11m 18'4" x 10'2"

Kitchen / dining area

5.59m x 2.70m 18'4" x 8'10"

First floor

Bedroom 1

3.36m x 3.19m 11'0" x 10'5"

Bedroom 2

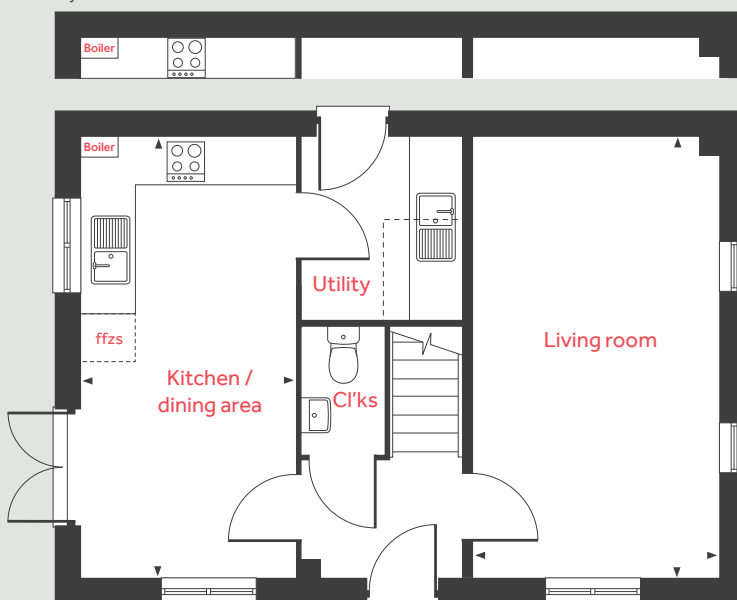
3.15m x 2.75m 10'4" x 9'0"

Bedroom 3

2.76m x 2.76m 9'0" x 9'0"

Ground floor

Layout for semi-detached



lh loft hatch ◀ ▶ measuring points
ffzs fridge freezer space - - - reduced ceiling height

The illustrations shown are computer generated impressions of how the property may look and are indicative only. External details or finishes may vary on individual plots and homes may be built in either detached or attached styles depending on the development layout. Exact specifications, window styles and whether a property is left or right handed may differ from plot to plot. Please speak to our sales consultant for specific plot details.

The floorplan has been produced for illustrative purposes only. Room sizes shown are between arrow points as indicated on plan. The dimensions have tolerances of + or -50mm and should not be used other than for general guidance. If specific dimensions are required, enquiries should be made to the sales consultant. The floor plans shown are not to scale. Measurements are based on the original drawings. Slight variations may occur during construction.

Linden
HOMES



The Leverton 4 bedroom home

Hubbard's Walk

Louth LN11 8LQ | 01507 598 070

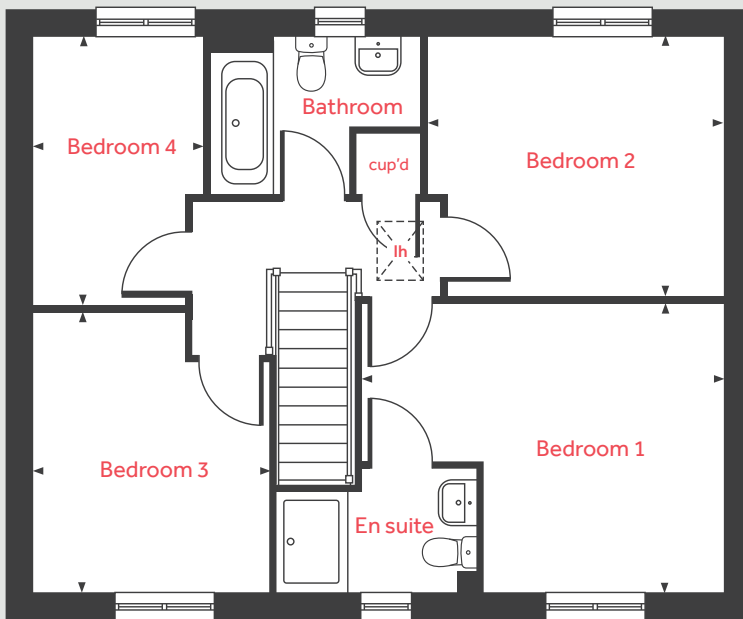
lindenhomes.co.uk

Linden
HOMES

The Leverton

4 bedroom home

First floor



Ground floor

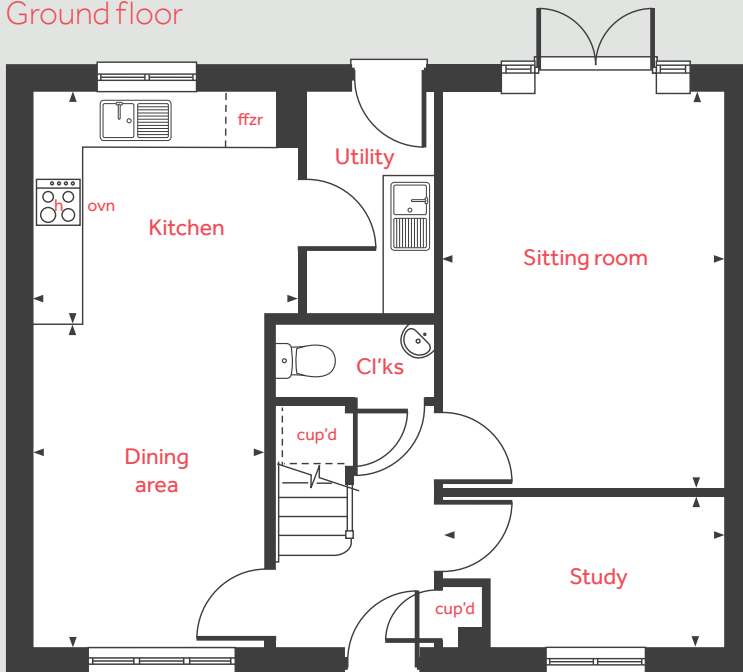
Kitchen	3.24m x 2.80m	10' 7" x 9' 2"
Sitting room	4.81m x 3.39m	15' 9" x 11' 1"
Dining area	3.91m x 2.81m	12' 10" x 9' 2"
Study	3.39m x 1.82m	11' 1" x 5' 11"

First floor

Bedroom 1	4.40m x 3.49m	14' 5" x 11' 5"
Bedroom 2	3.59m x 3.15m	11' 9" x 10' 4"
Bedroom 3	3.38m x 2.88m	11' 1" x 9' 5"
Bedroom 4	3.26m x 2.08m	10' 8" x 6' 10"

h	hob	lh	loft hatch
ovn	oven	cup'd	cupboard
ffzr	fridge freezer space	◀ ▶	measuring points

Ground floor



The illustrations shown are computer generated impressions of how the property may look and are indicative only. External details or finishes may vary on individual plots and homes may be built in either detached or attached styles depending on the development layout. Exact specifications, window styles and whether a property is left or right handed may differ from plot to plot. Please speak to our sales consultant for specific plot details.

The floorplan has been produced for illustrative purposes only. Room sizes shown are between arrow points as indicated on plan. The dimensions have tolerances of + or -50mm and should not be used other than for general guidance. If specific dimensions are required, enquiries should be made to the sales consultant. The floor plans shown are not to scale. Measurements are based on the original drawings. Slight variations may occur during construction.



The Hardwick 2 bedroom home

Hubbard's Walk

Louth LN11 8LQ | 01507 598 070

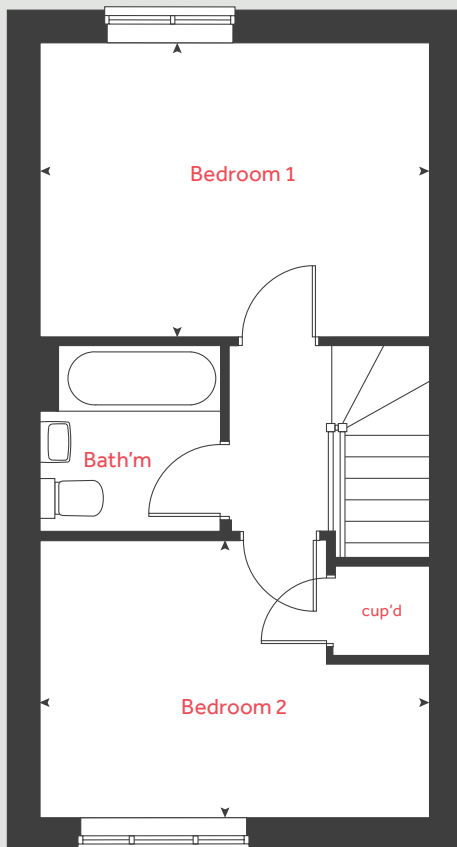
lindenhomes.co.uk

Linden
HOMES

The Hardwick

2 bedroom home

First floor



Ground floor

Kitchen / dining area

4.11m x 3.14m 13' 4" x 10' 3"

Living room

4.11m x 3.21m 13' 4" x 10' 5"

First floor

Bedroom 1

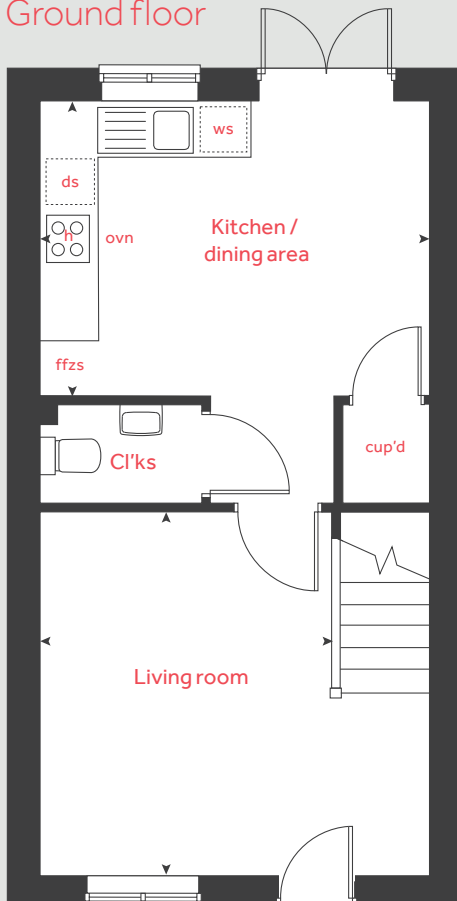
4.11m x 3.14m 13' 4" x 10' 3"

Bedroom 2

4.11m x 2.84m 13' 4" x 9' 3"

h	hob	ffzs	fridge freezer space
ovn	oven	cup'd	cupboard
ws	washing machine space	< >	measuring points
ds	dishwasher space		

Ground floor



The illustrations shown are computer generated impressions of how the property may look and are indicative only. External details or finishes may vary on individual plots and homes may be built in either detached or attached styles depending on the development layout. Exact specifications, window styles and whether a property is left or right handed may differ from plot to plot. Please speak to our sales consultant for specific plot details.

The floorplan has been produced for illustrative purposes only. Room sizes shown are between arrow points as indicated on plan. The dimensions have tolerances of + or -50mm and should not be used other than for general guidance. If specific dimensions are required, enquiries should be made to the sales consultant. The floor plans shown are not to scale. Measurements are based on the original drawings. Slight variations may occur during construction.

Linden
HOMES



The Elmslie 3 bedroom home

Hubbard's Walk

Louth LN11 8LQ | 01507 598 070

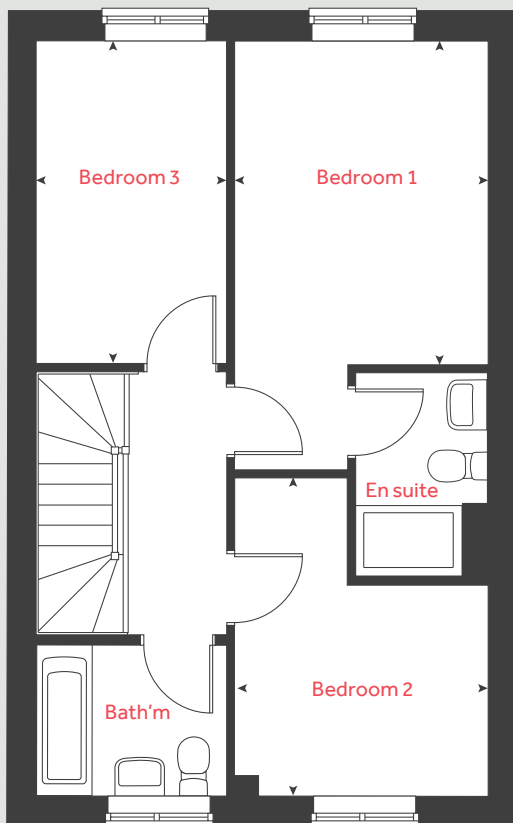
lindenhomes.co.uk

Linden
HOMES

The Elmslie

3 bedroom home

First floor



Ground floor

Kitchen / dining area

4.78m x 2.91m 15' 8" x 9' 6"

Living room

5.09m x 3.63m 16' 9" x 11' 11"

First floor

Bedroom 1

3.66m x 2.86m 12' 0" x 9' 4"

Bedroom 2

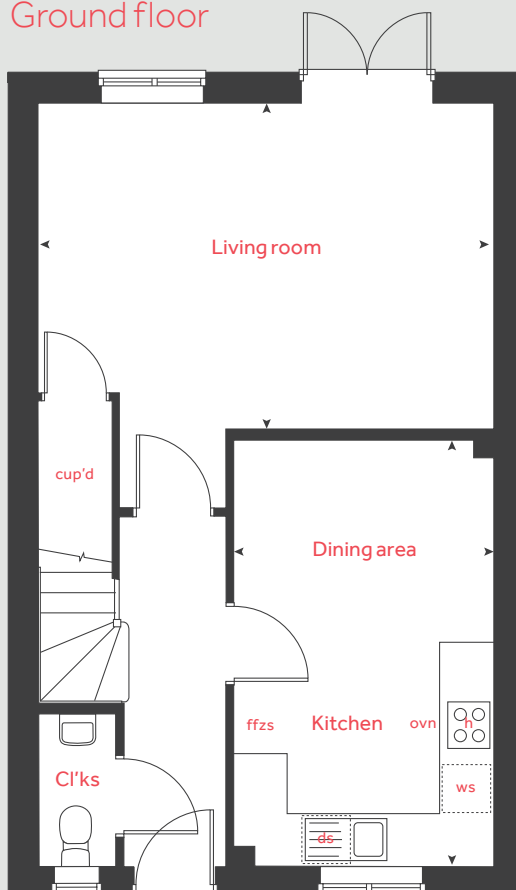
2.85m x 2.37m 9' 4" x 7' 9"

Bedroom 3

3.65m x 2.15m 12' 0" x 7' 1"

h	hob	ws	washing machine space
ovn	oven	cup'd	cupboard
ffzs	fridge freezer space	◀ ▶	measuring points
ds	dishwasher space		

Ground floor



The illustrations shown are computer generated impressions of how the property may look and are indicative only. External details or finishes may vary on individual plots and homes may be built in either detached or attached styles depending on the development layout. Exact specifications, window styles and whether a property is left or right handed may differ from plot to plot. Please speak to our sales consultant for specific plot details.

The floorplan has been produced for illustrative purposes only. Room sizes shown are between arrow points as indicated on plan. The dimensions have tolerances of + or -50mm and should not be used other than for general guidance. If specific dimensions are required, enquiries should be made to the sales consultant. The floor plans shown are not to scale. Measurements are based on the original drawings. Slight variations may occur during construction.

Linden
HOMES



Specification

We give you so much more

Hubbard's Walk

Louth LN11 8LQ | 01507 598 070

lindenhomes.co.uk

Linden
HOMES

Specification

We give you so much more

Each home will be independently surveyed during construction by the NHBC, who will issue their 10 year warranty certificate on completion of the home.

	2 bedroom	The Harcourt	3 bedroom	The Eveleigh	The Elmslie	The Mountford	4 bedroom	The Mylne	The Leverton
Kitchen									
Fitted kitchen with laminate worktop	■	■	■	■	■	■	■	■	■
Stainless steel sink and drainer (single bowl) with chrome mixer tap	■	■	■	■	■	■	■	■	■
Stainless steel sink and drainer (single bowl) with chrome mixer tap in utility						■			■
Indesit hob (60cm) with Indesit built-in single under oven, with stainless steel splashback and integrated silver hood.	■	■	■	■	■	■			
Indesit hob (60 cm) with built-in single under oven, with stainless steel splashback and 60cm stainless steel chimney hood.								■	■
White pendant light holder	■	■	■	■	■	■	■	■	■
Fridge/ freezer space	■	■	■	■	■	■	■	■	■
Space for integrated dishwasher with plumbing and electrics	■	■	■	■	■	■	■	■	■
Space for washing machine with plumbing and electrics in kitchen	■	■	■	■	■		■	■	
Space for washing machine with plumbing and electrics in utility						■			■
Bathroom, en suite(s)									
Ideal Standard contemporary white Tempo sanitaryware	■	■	■	■	■	■	■	■	■
Ideal Standard close coupled WC to cloakroom	■	■	■	■	■	■	■	■	■
Ideal Standard low profile shower tray with glass enclosure in ensuite									
Handheld hair wash attachment in bathroom									
Shower over the bath	■								
Choice of standard Porcelanosa wall tiling (splashback, 450mm height over bath, and full-height to shower cubicle)	■	■	■	■	■	■	■	■	■
White batten light holder	■	■	■	■	■	■	■	■	■
Doors & Windows									
Front door with multi-point security locking system and security chain	■	■	■	■	■	■	■	■	■
PVCu double glazing to windows	■	■	■	■	■	■	■	■	■
Double glazed PVCu French doors	■	■	■	■	■	■	■	■	■
Internal ladder door style pre-primed with Brass Satin finish handles	■	■	■	■	■	■	■	■	■
Paving outside French/bifold door and path to garage personnel door (where applicable)	■	■	■	■	■	■	■	■	■
Other									
Walls and ceilings in White matt emulsion	■	■	■	■	■	■	■	■	■
TV point to lounge and family room	■	■	■	■	■	■	■	■	■
Master telephone socket to lounge and study where applicable	■	■	■	■	■	■	■	■	■
Ideal combi-boiler with Honeywell heating control and room thermostat(s)	■	■	■	■	■	■	■	■	■
Thermostatic valves to all radiators (with the exception of rooms with separate thermostat control)	■	■	■	■	■	■	■	■	■
Contemporary lantern to front door and wiring only to the rear door	■	■	■	■	■	■	■	■	■
Mains wired smoke detectors with battery back-up	■	■	■	■	■	■	■	■	■
Battery powered Carbon Monoxide detector (wall mounted) to be provided for each floor	■	■	■	■	■	■	■	■	■
Power and lighting to garage (where in curtilage of the plot)	■	■	■	■	■	■	■	■	■
Enclosed fenced rear garden, and garden gate (where applicable).	■	■	■	■	■	■	■	■	■
NHBC Buildmark cover	■	■	■	■	■	■	■	■	■
First two years' customer service support from Linden Homes	■	■	■	■	■	■	■	■	■