

Seymour Place

Undy



Linden
HOMES



Seymour Place Undy

A collection of 2, 3 and 4 bedroom homes in the picturesque location of Undy, Monmouthshire.

Undy and neighbouring Magor, form a busy parish with shops, primary schools, pubs and businesses and nearby Caldicot has supermarkets, a leisure centre, secondary school and impressive medieval castle.

So, if you're looking for a quality new home in a Monmouthshire village within easy reach of Newport, Cardiff and Bristol, your search ends here!

It's about 1 mile to Junction 23A of the M4 for Newport, 10 miles away and Cardiff 21 miles, or if you go east over the Severn Bridge, Bristol is 24 miles. It's only 29 miles to Bristol Airport and from the Severn Tunnel Junction at Rogiet, just 3 miles from Seymour Place, trains run regularly to Newport, Cardiff, Bristol and beyond.

Seymour Place

Undy, Monmouthshire NP26 3NL | 01633 928858

lindenhomes.co.uk

Linden
HOMES

Seymour Place Undy

Development layout



4 bedroom home

- The Aslin
- The Myline
- The Pembroke

3 bedroom home

- The Eveleigh
- The Mountford
- The Wyatt

2 bedroom home

- The Harcourt

2 bedroom apartments

- The Roman Apartments

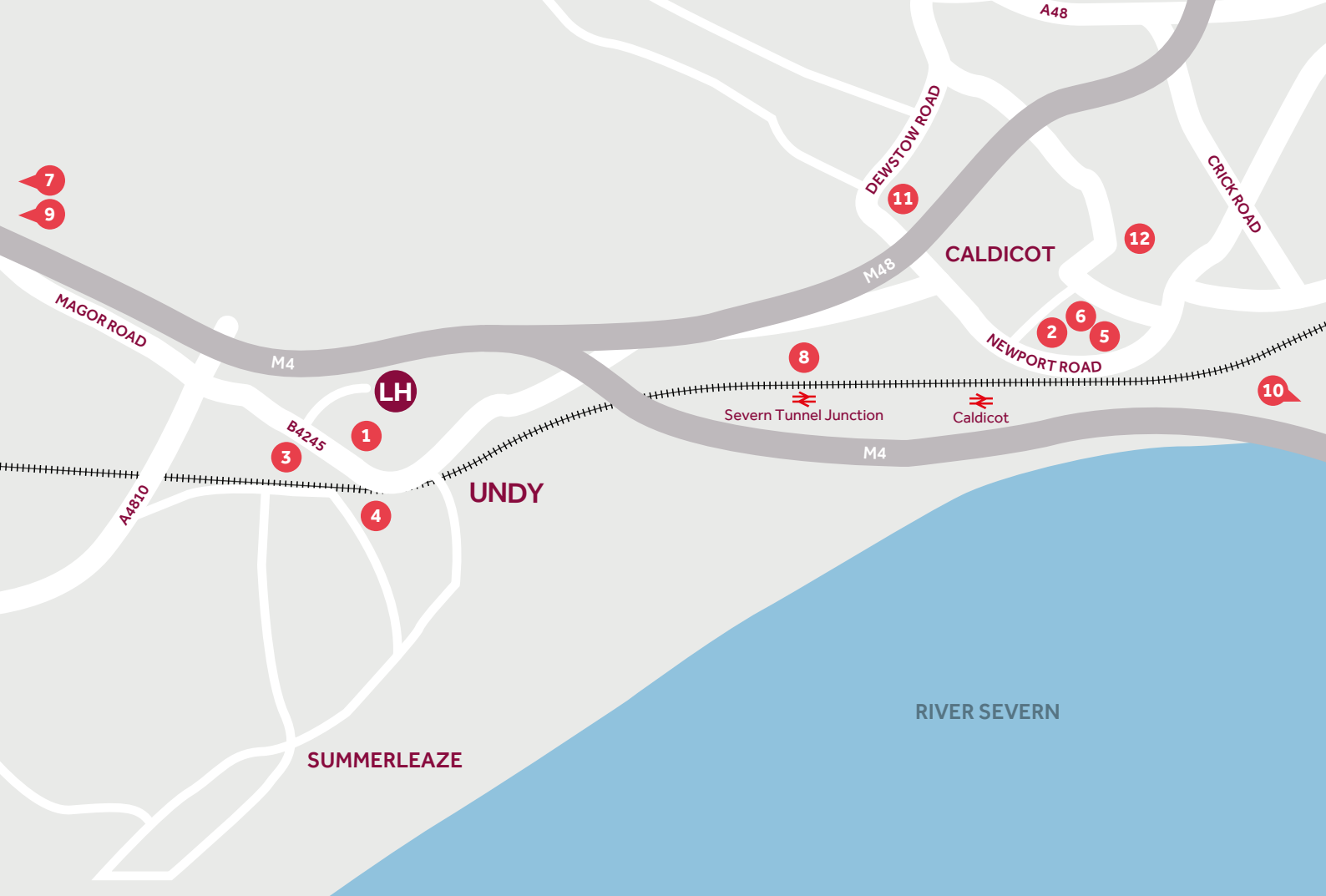
Pre sold homes

- 1 bedroom home
- 2 bedroom home
- 3 bedroom home
- 4 bedroom home

● Bovis Homes development

- | | |
|---|--|
| ▬ Embankment Slope | v Visitor Parking Space |
| BS Bin Store | CS Cycle Store |
| ss Sub Station | bcp Bin Collection Point |

This plan has been produced for home identification purposes only and is not to scale. The development layout, landscaping and tenure of all dwellings may be subject to change throughout the course of the development. Finishes and materials may vary from those shown on the plan. Please check the details of your chosen plot and house type with the sales consultant. Development layout plan correct at time of production.



Around the local neighbourhood

- | | | |
|---|--|--|
| 1 Undy Primary School
NP26 3LZ | 5 Caldicot Leisure Centre
NP25 4BN | 9 Coleg Gwent
NP19 4TS |
| 2 Caldicot Comprehensive
NP26 5XA | 6 Asda Supermarket
NP26 5DB | 10 Aust Cliff and Beach
BS35 4BL |
| 3 Co-op Convenience Store
NP26 3EG | 7 Newport Retail Park
NP19 4QQ | 11 Dewstow Gardens and Grottoes
NP26 5AH |
| 4 Magor Marsh Nature Reserve
NP26 3DD | 8 Severn Tunnel Junction
Train Station
NP26 3WF | 12 Caldicot Castle and Country Park
NP26 4HU |

Linden Homes, Western region
Linden House, The Jacobs Building, Berkeley Place, Clifton,
Bristol BS8 1EH. T: 0117 930 4949

Produced by the Vistry Group Design Studio. B1000 DS02838 / 11.22

lindenhomes.co.uk



Linden
HOMES



The Harcourt

2 bedroom home

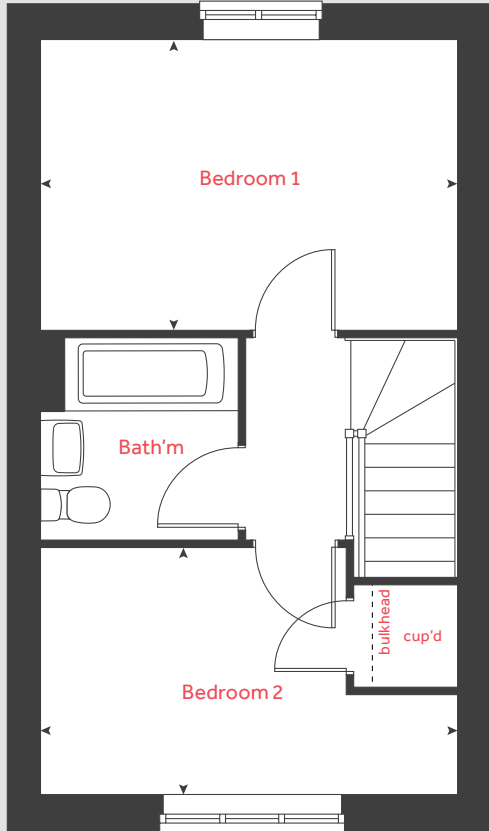
Seymour Place

Undy, Monmouthshire NP26 3NL | 01633 928858

lindenhomes.co.uk

Linden
HOMES

First floor



The Harcourt

2 bedroom home

Homes 22, 23, 27, 28, 29
34, 36, 37, 38, 39, 40 and 41

Ground floor

Kitchen / dining area

4.58m x 2.01m 15' 0" x 6' 7"

Living room

4.11m x 2.71m 13' 6" x 8' 10"

First floor

Bedroom 1

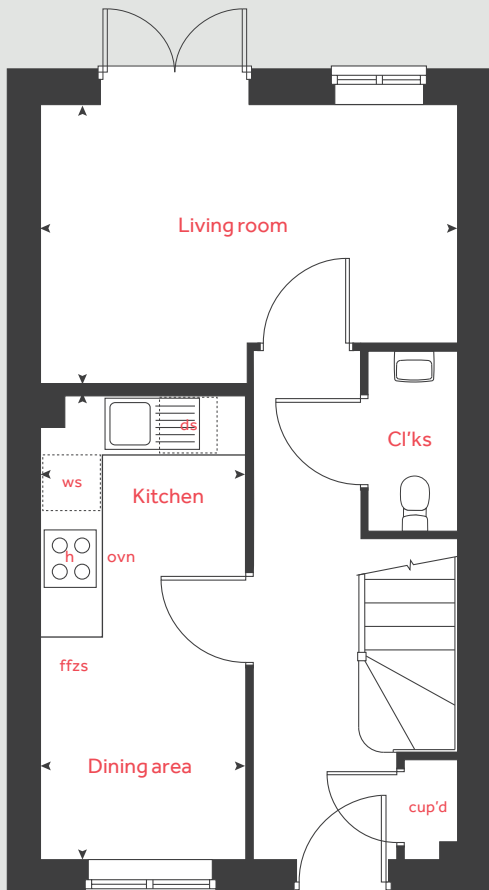
4.11m x 2.84m 13' 6" x 9' 4"

Bedroom 2

4.11m x 2.41m 13' 6" x 7' 11"

h	hob	cup'd	cupboard
ovn	oven	ws	washing machine space
ffzs	fridge freezer space	< >	measuring points
ds	dishwasher space		

Ground floor



Please note, floorplans and dimensions are taken from architectural drawings and are for guidance only. Dimensions stated are within a tolerance of plus or minus 50mm. Overall dimensions are usually stated and there may be projections into these. With our continual improvement policy we constantly review our designs and specification to ensure we deliver the best products to our customers. Computer generated images not to scale. Finishes and materials may vary and landscaping is illustrative only. Kitchen layouts are indicative only and may change. To confirm specific details on our homes please see our sales consultant.

Produced by Vistry Group Design Studio.

When you have finished with this leaflet please recycle it.

B1000 DS02838 / 10.22

Linden

HOMES



The Eveleigh

3 bedroom home

Seymour Place

Undy, Monmouthshire NP26 3NL | 01633 928858

lindenhomes.co.uk

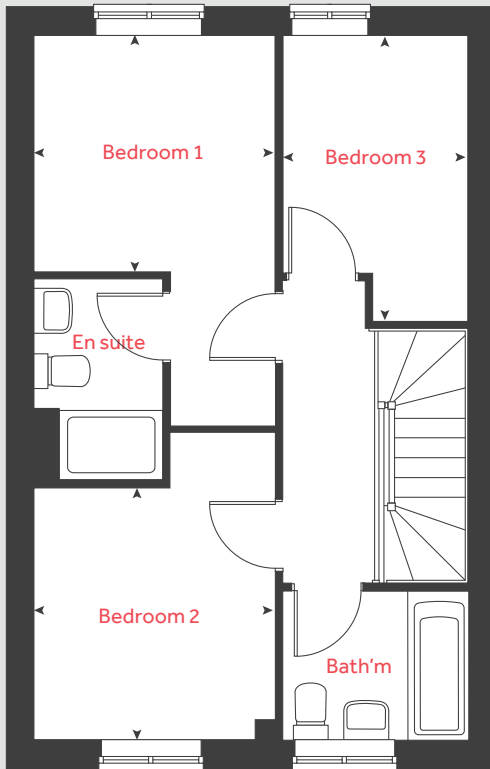
Linden
HOMES

The Eveleigh

3 bedroom home

Homes 5 and 6

First floor



Ground floor

Kitchen / dining area

4.77m x 2.80m 15' 8" x 9' 2"

Living room

4.98m x 3.20m 16' 4" x 10' 6"

First floor

Bedroom 1

2.77m x 2.71m 9' 1" x 8' 11"

Bedroom 2

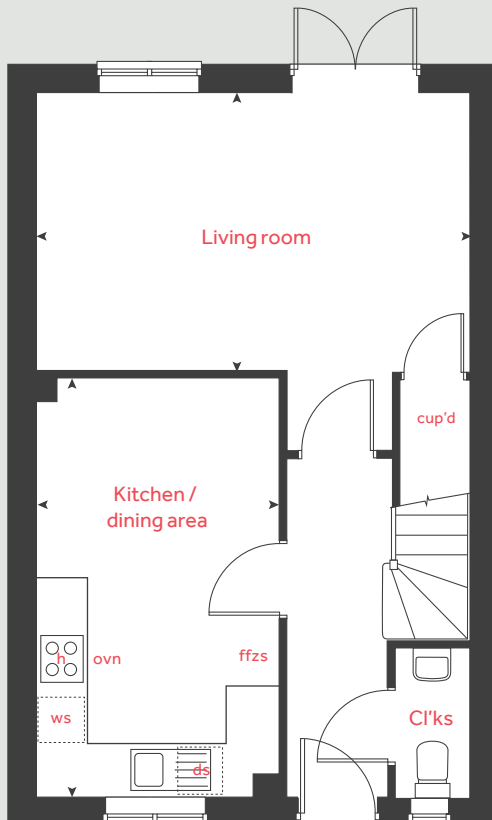
2.89m x 2.77m 9' 6" x 9' 1"

Bedroom 3

3.19m x 2.12m 10' 6" x 7' 0"

h	hob	ws	washing machine space
ovn	oven	cup'd	cupboard
ffzs	fridge freezer space	< >	measuring points
ds	dishwasher space		

Ground floor



Please note, floorplans and dimensions are taken from architectural drawings and are for guidance only. Dimensions stated are within a tolerance of plus or minus 50mm. Overall dimensions are usually stated and there may be projections into these. With our continual improvement policy we constantly review our designs and specification to ensure we deliver the best products to our customers. Computer generated images not to scale. Finishes and materials may vary and landscaping is illustrative only. Kitchen layouts are indicative only and may change. To confirm specific details on our homes please see our sales consultant.

Produced by Vistry Group Design Studio.

When you have finished with this leaflet please recycle it.

B1000 DS02838 / 10.22

Linden

HOMES



The Mountford

3 bedroom home

Seymour Place

Undy, Monmouthshire NP26 3NL | 01633 928858

[lindenhomes.co.uk](https://www.lindenhomes.co.uk)

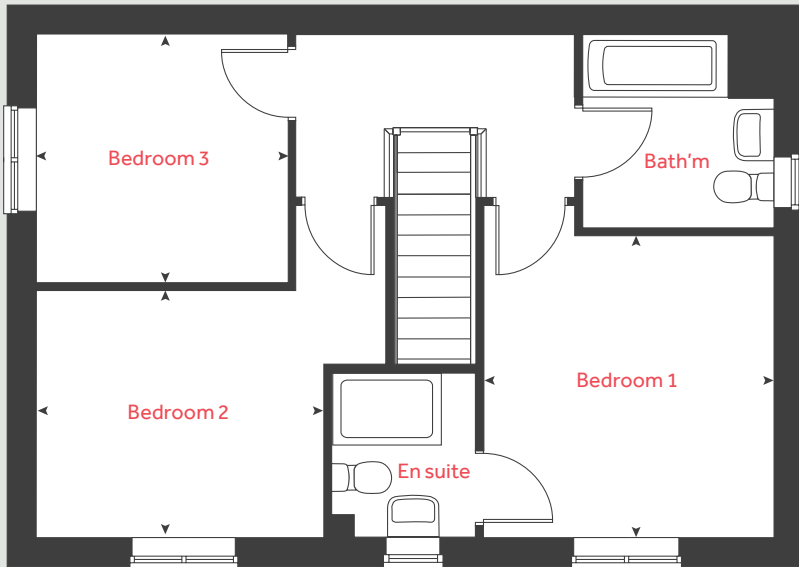
Linden
HOMES

The Mountford

3 bedroom home

Home 30

First floor



Ground floor

Kitchen / dining area

5.59m x 2.69m 18' 5" x 8' 8"

Living room

5.59m x 3.11m 18' 4" x 10' 3"

First floor

Bedroom 1

3.36m x 3.18m 11' 0" x 10' 5"

Bedroom 2

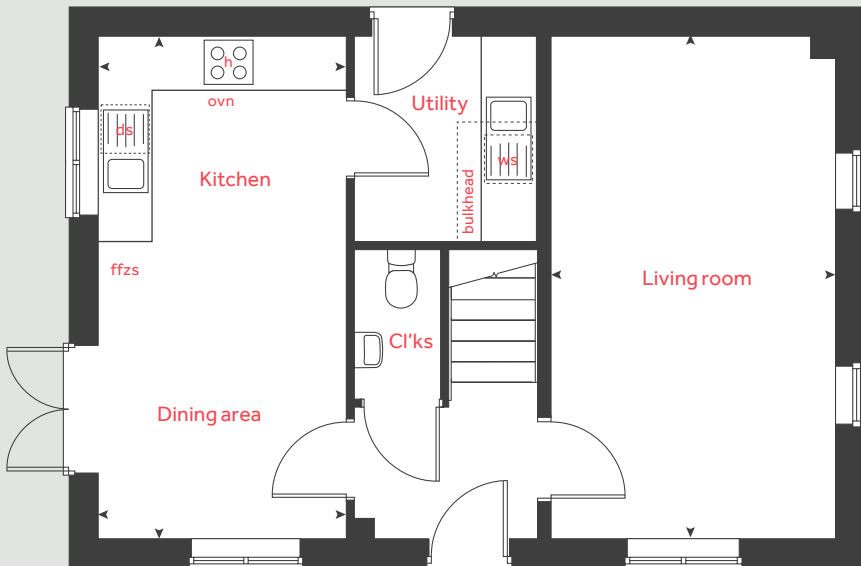
3.14m x 2.74m 10' 3" x 9' 0"

Bedroom 3

2.76m x 2.75m 9' 1" x 9' 1"

h	hob	ds	dishwasher space
ovn	oven	ffzs	fridge freezer space
ws	washing machine space	cup'd	cupboard
ts	tumble dryer space	◀ ▶	measuring points

Ground floor



Please note, floorplans and dimensions are taken from architectural drawings and are for guidance only. Dimensions stated are within a tolerance of plus or minus 50mm. Overall dimensions are usually stated and there may be projections into these. With our continual improvement policy we constantly review our designs and specification to ensure we deliver the best products to our customers. Computer generated images not to scale. Finishes and materials may vary and landscaping is illustrative only. Kitchen layouts are indicative only and may change. To confirm specific details on our homes please see our sales consultant.

Produced by Vistry Group Design Studio.

When you have finished with this leaflet please recycle it.

B1000 DS02838 / 10.22

Linden
HOMES



The Aslin

4 bedroom home

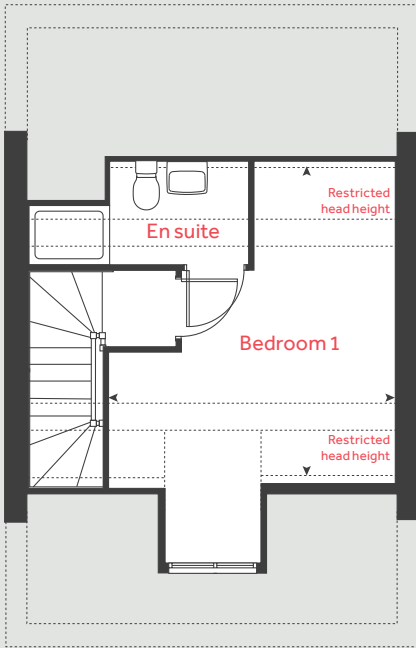
Seymour Place

Undy, Monmouthshire NP26 3NL | 01633 928858

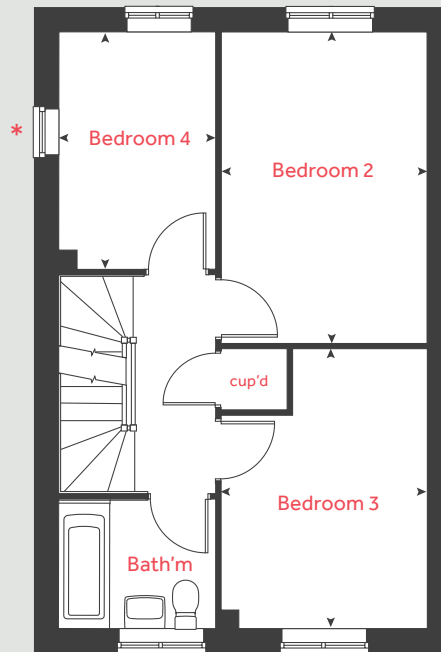
lindenhomes.co.uk

Linden
HOMES

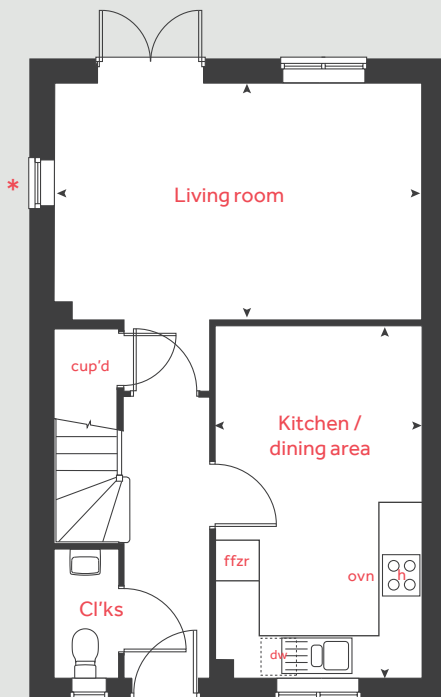
Second floor



First floor



Ground floor



The Aslin

4 bedroom home

Home 3, 4, 7, 8, 33 and 35

Ground floor

Kitchen / dining area
4.78m x 2.80m 15' 8" x 9' 2"

Living room
4.98m x 3.16m 16' 4" x 10' 4"

First floor

Bedroom 2
4.19m x 2.76m 13' 9" x 9' 1"

Bedroom 3
3.76m x 2.76m 12' 4" x 9' 1"

Bedroom 4
3.17m x 2.10m 10' 5" x 6' 11"

Second floor

Bedroom 1
4.29m x 3.85m 14' 1" x 12' 8"

h hob dw dishwasher
ovn oven cup'd cupboard
ffzr fridge freezer < > measuring points

* Windows apply to selected plots only. Please see sales consultant for further details.

Please note, floorplans and dimensions are taken from architectural drawings and are for guidance only. Dimensions stated are within a tolerance of plus or minus 50mm. Overall dimensions are usually stated and there may be projections into these. With our continual improvement policy we constantly review our designs and specification to ensure we deliver the best products to our customers. Computer generated images not to scale. Finishes and materials may vary and landscaping is illustrative only. Kitchen layouts are indicative only and may change. To confirm specific details on our homes please see our sales consultant.

Produced by Vistry Group Design Studio.

When you have finished with this leaflet please recycle it.

B1000 DS02838 / 10.22

Linden HOMES



The Mylne

4 bedroom home

Seymour Place

Undy, Monmouthshire NP26 3NL | 01633 928858

[lindenhomes.co.uk](https://www.lindenhomes.co.uk)

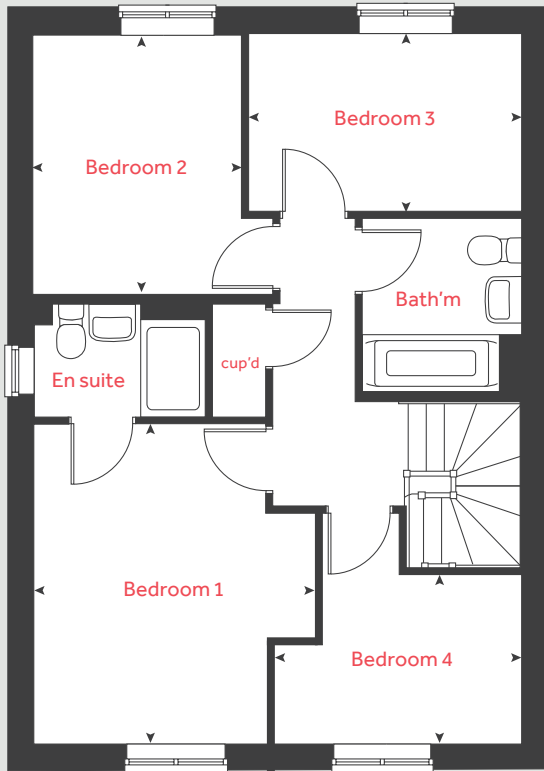
Linden
HOMES

The Mylne

4 bedroom home

Home 2, 9 and 26

First floor



Ground floor

Kitchen / dining / family area

6.01m x 3.75m 19' 8" x 12' 3"

Living room

4.83m x 3.39m 15' 10" x 11' 2"

First floor

Bedroom 1

3.95m x 3.46m 13' 0" x 11' 4"

Bedroom 2

3.20m x 2.56m 10' 6" x 8' 5"

Bedroom 3

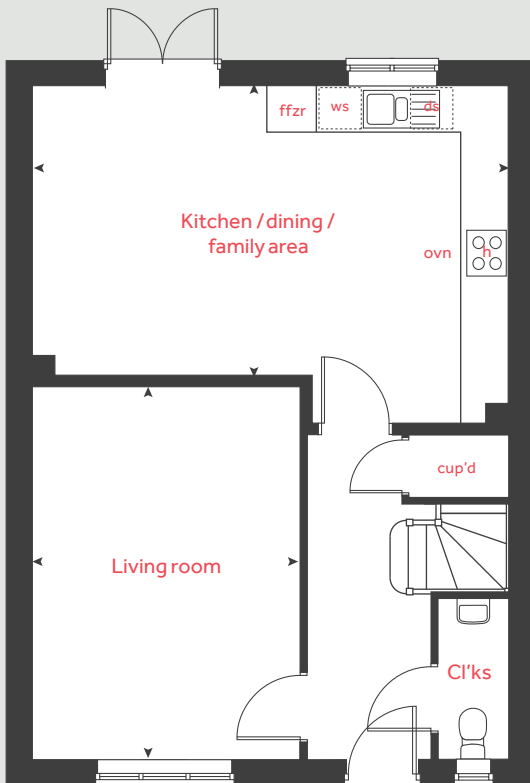
3.36m x 2.22m 11' 0" x 7' 3"

Bedroom 4

3.10m x 2.10m 10' 2" x 6' 11"

h	hob	ws	washing machine space
ovn	oven	cup'd	cupboard
ffzr	fridge freezer	< >	measuring points
ds	dishwasher space		

Ground floor



Please note, floorplans and dimensions are taken from architectural drawings and are for guidance only. Dimensions stated are within a tolerance of plus or minus 50mm. Overall dimensions are usually stated and there may be projections into these. With our continual improvement policy we constantly review our designs and specification to ensure we deliver the best products to our customers. Computer generated images not to scale. Finishes and materials may vary and landscaping is illustrative only. Kitchen layouts are indicative only and may change. To confirm specific details on our homes please see our sales consultant.

Produced by Vistry Group Design Studio.

When you have finished with this leaflet please recycle it.

B1000 DS02838 / 10.22

Linden
HOMES



The Pembroke

4 bedroom home

Seymour Place

Undy, Monmouthshire NP26 3NL | 01633 928858

[lindenhomes.co.uk](https://www.lindenhomes.co.uk)

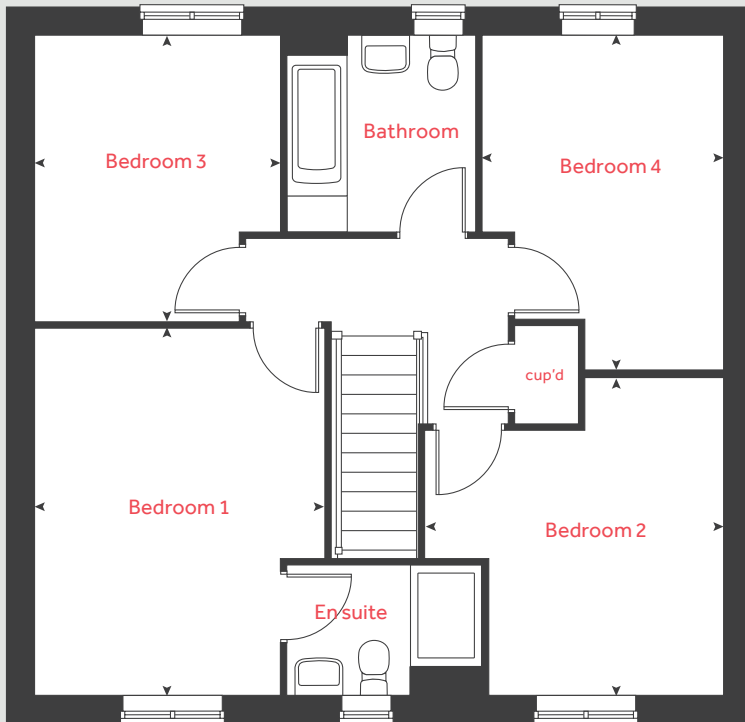
Linden
HOMES

The Pembroke

4 bedroom home

Homes 1, 24, 25, 31 and 32

First floor



Ground floor

Kitchen / family / dining area

8.07m x 3.34m 26' 6" x 11' 0"

Living room

4.83m x 3.49m 15' 10" x 11' 5"

Study

2.41m x 2.36m 7' 11" x 7' 9"

First floor

Bedroom 1

4.29m x 3.39m 14' 1" x 11' 1"

Bedroom 2

3.72m x 2.75m 12' 3" x 9' 0"

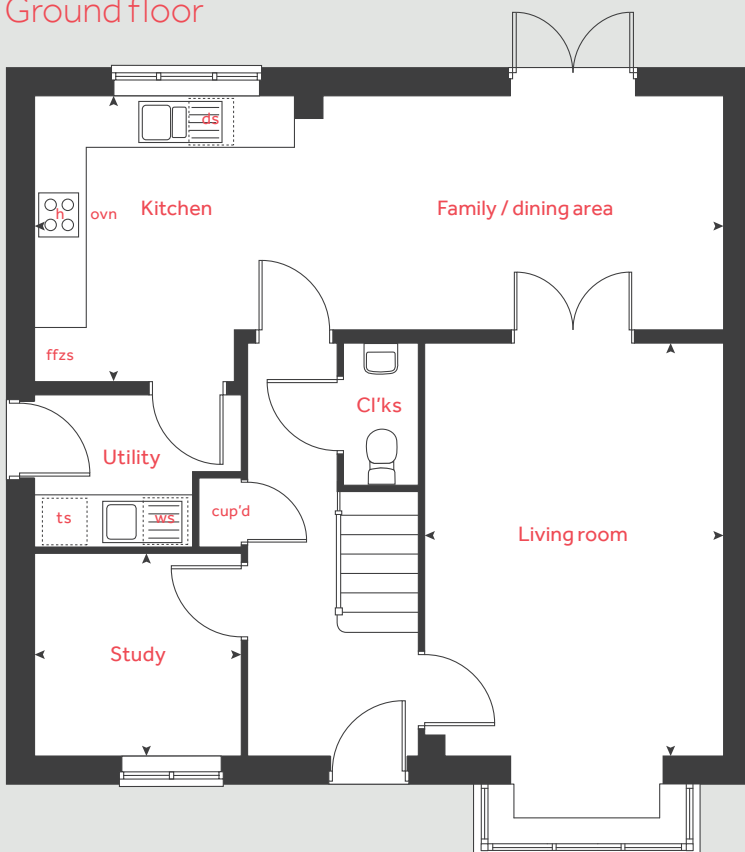
Bedroom 3

3.35m x 2.87m 11' 0" x 9' 5"

Bedroom 4

3.92m x 2.82m 12' 11" x 9' 3"

Ground floor



h	hob	ffzs	fridge freezer space
ovn	oven	ts	tumble dryer space
ws	washing machine space	cup'd	cupboard
ds	dishwasher space	< >	measuring points

Please note, floorplans and dimensions are taken from architectural drawings and are for guidance only. Dimensions stated are within a tolerance of plus or minus 50mm. Overall dimensions are usually stated and there may be projections into these. With our continual improvement policy we constantly review our designs and specification to ensure we deliver the best products to our customers. Computer generated images not to scale. Finishes and materials may vary and landscaping is illustrative only. Kitchen layouts are indicative only and may change. To confirm specific details on our homes please see our sales consultant.

Produced by Vistry Group Design Studio.

When you have finished with this leaflet please recycle it.

B1000 DS02838 / 10.22

Linden

HOMES



The Wyatt

3 bedroom home

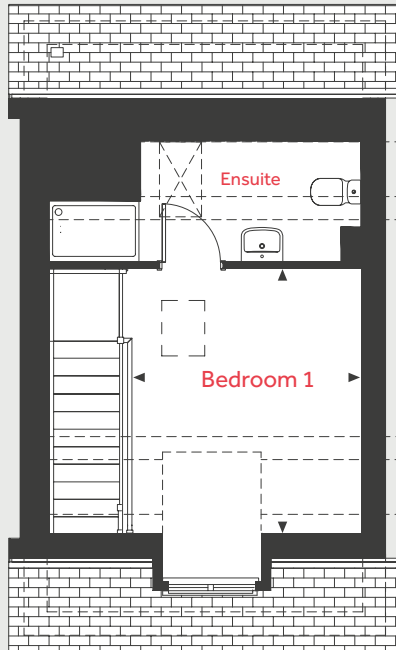
Seymour Place

Grange Road, Undy, NP26 3BX | 0163 349 4951

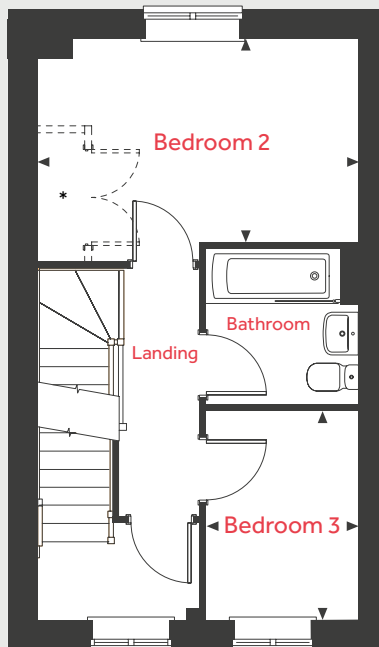
lindenhomes.co.uk

Linden
HOMES

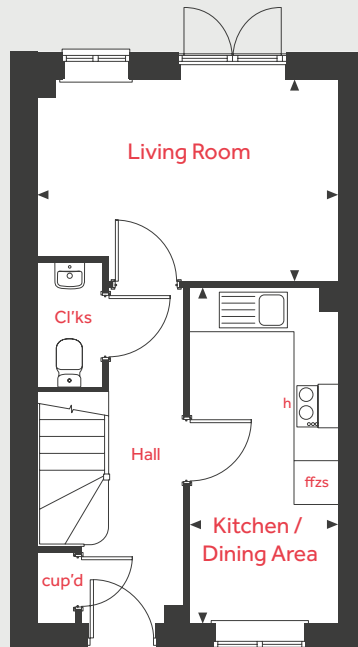
Second Floor



First Floor



Ground Floor



The Wyatt

3 bedroom home

Homes 128, 129, 130, 131, 137 & 138

Ground Floor

Kitchen / Dining area

4.56m x 2.01m 15'0" x 6'7"

Living room

4.08m x 2.74m 13'5" x 9'0"

First Floor

Bedroom 2

4.08m x 2.58m 13'5" x 8'6"

Bedroom 3

2.65m x 1.94m 8'8" x 6'4"

Second Floor

Bedroom 1

3.46m x 3.06m 11'4" x 10'0"

ovn	oven	cup'd	cupboard
h	hob	< >	measuring points
[]	loft hatch	- - -	reduced ceiling height
ffzs	fridge freezer space		

*optional wardrobe upgrade

The illustrations shown are computer generated impressions of how the property may look and are indicative only. External details or finishes may vary on individual plots and homes may be built in either detached or attached styles depending on the development layout. Exact specifications, window styles and whether a property is left or righthanded may differ from plot to plot. Please speak to our sales consultant for specific plot details.

The floorplan has been produced for illustrative purposes only. Room sizes shown are between arrow points as indicated on plan. The dimensions have tolerances of + or -50mm and should not be used other than for general guidance. If specific dimensions are required, enquiries should be made to the sales consultant. The floor plans shown are not to scale. Measurements are based on the original drawings. Slight variations may occur during construction.

06.24

Linden
HOMES



Type 1 2 bedroom apartment

The Roman Apartments

Seymour Place

Grange Road, Undy, NP26 3BX | 0163 349 4951

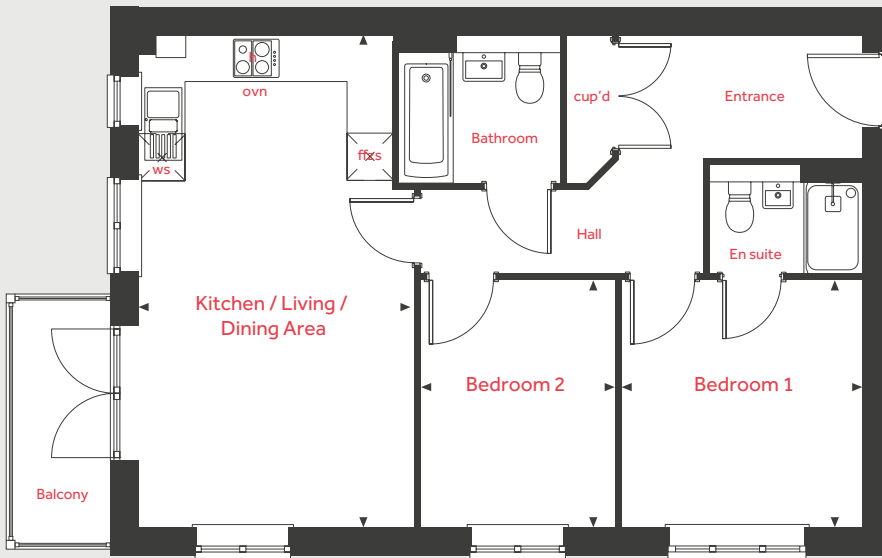
lindenhomes.co.uk

Linden
HOMES

Type 1

Roman Apartments
2 bedroom apartment

Plots: 96, 99, 102



Kitchen / Living / Dining Area

6.43m x 3.60m 21'1" x 11'10"

Bedroom 1

3.23m x 3.15m 10'7" x 10'4"

Bedroom 2

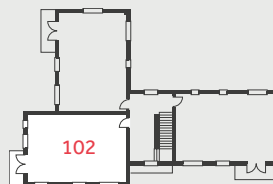
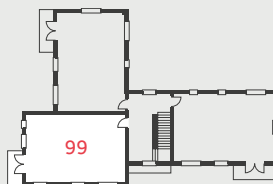
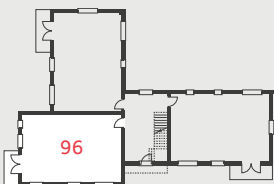
3.23m x 2.54m 10'7" x 8'4"

ovn	oven	ffzs	fridge freezer space
h	hob	ws	washing machine space
cup'd	cupboard	< >	measuring points

Ground Floor

First Floor

Second Floor



The illustrations shown are computer generated impressions of how the property may look and are indicative only. External details or finishes may vary on individual plots and homes may be built in either detached or attached styles depending on the development layout. Exact specifications, window styles and whether a property is left or righthanded may differ from plot to plot. Please speak to our sales consultant for specific plot details.

The floorplan has been produced for illustrative purposes only. Room sizes shown are between arrow points as indicated on plan. The dimensions have tolerances of + or -50mm and should not be used other than for general guidance. If specific dimensions are required, enquiries should be made to the sales consultant. The floor plans shown are not to scale. Measurements are based on the original drawings. Slight variations may occur during construction.

04.24



Type 2 2 bedroom apartment

The Roman Apartments

Seymour Place

Grange Road, Undy, NP26 3BX | 0163 349 4951

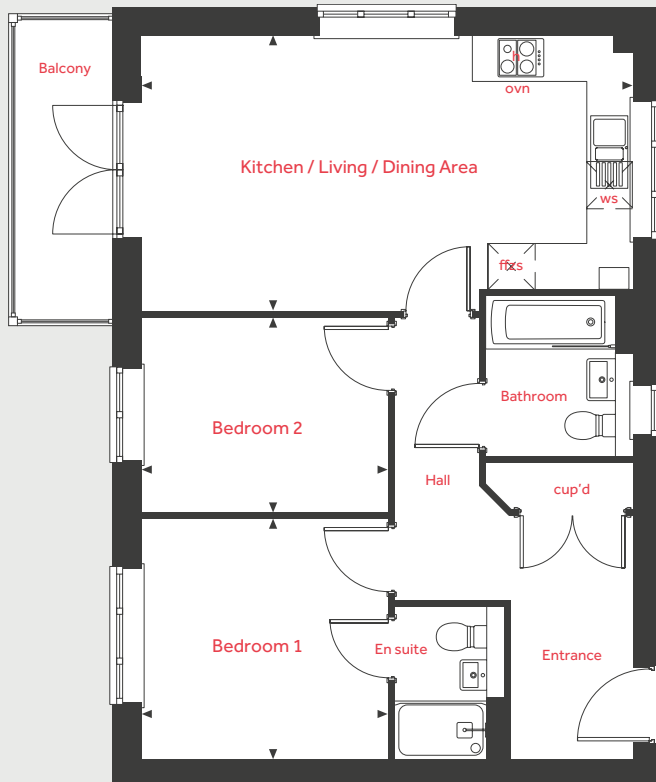
lindenhomes.co.uk

Linden
HOMES

Type 2

Roman Apartments
2 bedroom apartment

Plots: 97, 100, 103



Kitchen / Living / Dining Area

6.43m x 3.60m 21'1" x 11'10"

Bedroom 1

3.23m x 3.15m 10'7" x 10'4"

Bedroom 2

3.23m x 2.54m 10'7" x 8'4"

ovn	oven	ffzs	fridge freezer space
h	hob	ws	washing machine space
cup'd	cupboard	< >	measuring points

The illustrations shown are computer generated impressions of how the property may look and are indicative only. External details or finishes may vary on individual plots and homes may be built in either detached or attached styles depending on the development layout. Exact specifications, window styles and whether a property is left or righthanded may differ from plot to plot. Please speak to our sales consultant for specific plot details.

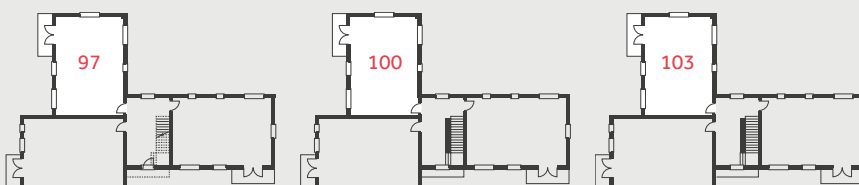
The floorplan has been produced for illustrative purposes only. Room sizes shown are between arrow points as indicated on plan. The dimensions have tolerances of + or -50mm and should not be used other than for general guidance. If specific dimensions are required, enquiries should be made to the sales consultant. The floor plans shown are not to scale. Measurements are based on the original drawings. Slight variations may occur during construction.

04.24

Ground Floor

First Floor

Second Floor





Type 3 2 bedroom apartment

The Roman Apartments

Seymour Place

Grange Road, Undy, NP26 3BX | 0163 349 4951

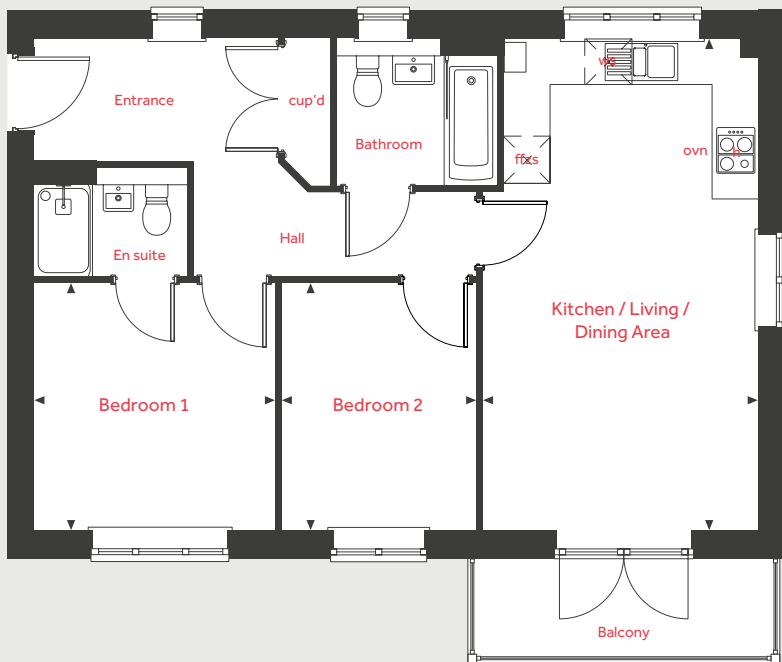
lindenhomes.co.uk

Linden
HOMES

Type 3

Roman Apartments
2 bedroom apartment

Plots: 95, 98, 101



Kitchen / Living / Dining Area

6.43m x 3.60m 21'1" x 11'10"

Bedroom 1

3.23m x 3.15m 10'7" x 10'4"

Bedroom 2

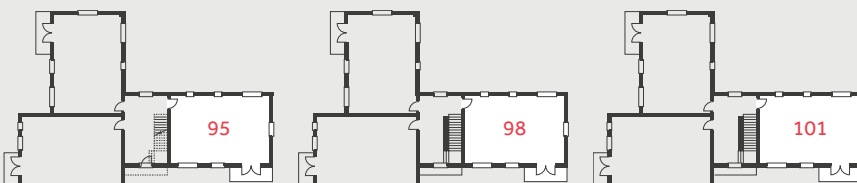
3.23m x 2.54m 10'7" x 8'4"

ovn	oven	ffzs	fridge freezer space
h	hob	ws	washing machine space
cup'd	cupboard	< >	measuring points

Ground Floor

First Floor

Second Floor



The illustrations shown are computer generated impressions of how the property may look and are indicative only. External details or finishes may vary on individual plots and homes may be built in either detached or attached styles depending on the development layout. Exact specifications, window styles and whether a property is left or righthanded may differ from plot to plot. Please speak to our sales consultant for specific plot details.

The floorplan has been produced for illustrative purposes only. Room sizes shown are between arrow points as indicated on plan. The dimensions have tolerances of + or -50mm and should not be used other than for general guidance. If specific dimensions are required, enquiries should be made to the sales consultant. The floor plans shown are not to scale. Measurements are based on the original drawings. Slight variations may occur during construction.

04.24

Linden
HOMES