

The Priors

Warwick



Linden
HOMES

Development layout

3 bedroom homes

- The Elliot
- The Eveleigh
- The Mountford

4 bedroom homes

- The Grainger
- The Mylne
- The Pembroke
- The Cottingham

● * Affordable housing

● Legally completed occupied homes

bcp bin collection point

bc bin store

cs cycle store

ss substation

This plan has been produced for home identification purposes only and is not to scale. The development layout, landscaping and tenure of all dwellings may be subject to change throughout the course of the development. Finishes and materials may vary from those shown on the plan.

Please check the details of your chosen plot and housetype with the sales consultant. Development layout plan correct at time of production.

Produced by the Vistry Group Design Studio.

When you have finished with this leaflet please recycle it.

DS055039 / 10.23



The Priors

Warwick, Warwickshire CV34 8BN | 01926 686749

lindenhomes.co.uk

Linden
HOMES



The Elliot

3 bedroom home

The Priors

Warwick, Warwickshire CV34 8BN | 01926 686749

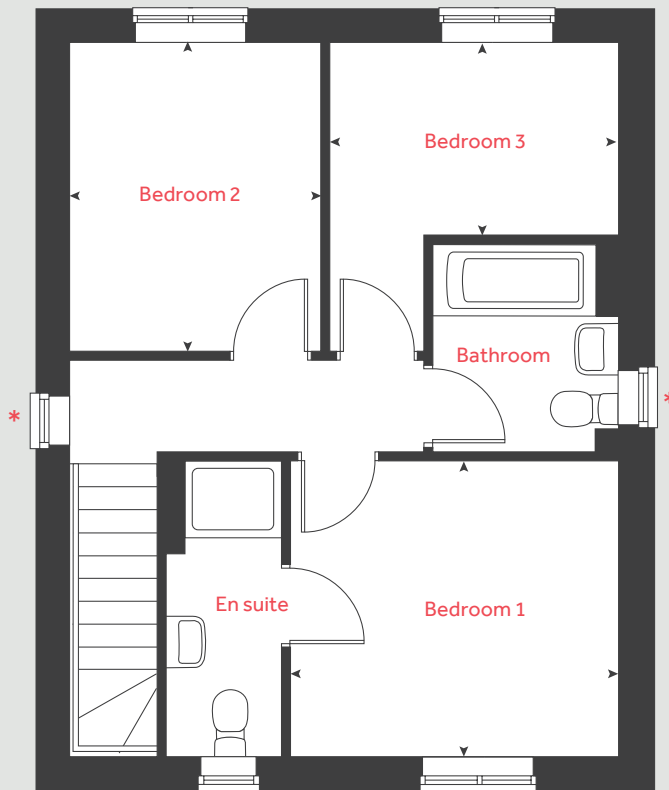
lindenhomes.co.uk

Linden
HOMES

The Elliot

3 bedroom home

First floor



Ground floor

Kitchen
3.29m x 2.95m 10' 10" x 9' 8"

Living / dining room
5.75m x 3.95m 18' 8" x 13' 0"

First floor

Bedroom 1
3.39m x 3.07m 11' 1" x 10' 1"

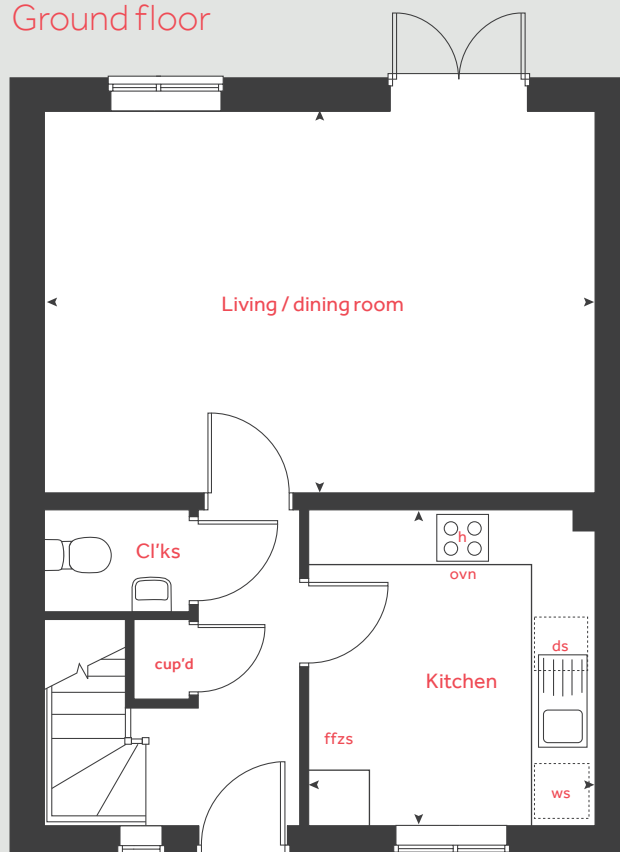
Bedroom 2
3.20m x 2.58m 10' 6" x 8' 6"

Bedroom 3
3.03m x 1.98m 9' 11" x 6' 6"

h	hob	ffzs	fridge freezer space
ovn	oven	cup'd	cupboard
ws	washing machine space	< >	measuring points
ds	dishwasher space		

* Windows apply to selected plots only. Please see sales consultant for further details.

Ground floor



Please note, floorplans and dimensions are taken from architectural drawings and are for guidance only. Dimensions stated are within a tolerance of plus or minus 50mm. Overall dimensions are usually stated and there may be projections into these. With our continual improvement policy we constantly review our designs and specification to ensure we deliver the best products to our customers. Computer generated images not to scale. Finishes and materials may vary and landscaping is illustrative only. Kitchen layouts are indicative only and may change. To confirm specific details on our homes please see our sales consultant.

Produced by Vistry Group Design Studio.

When you have finished with this leaflet please recycle it.

CA504 DS05539 / 09.23

Linden
HOMES



The Mountford

3 bedroom home

The Priors

Warwick, Warwickshire CV34 8BN | 01926 686749

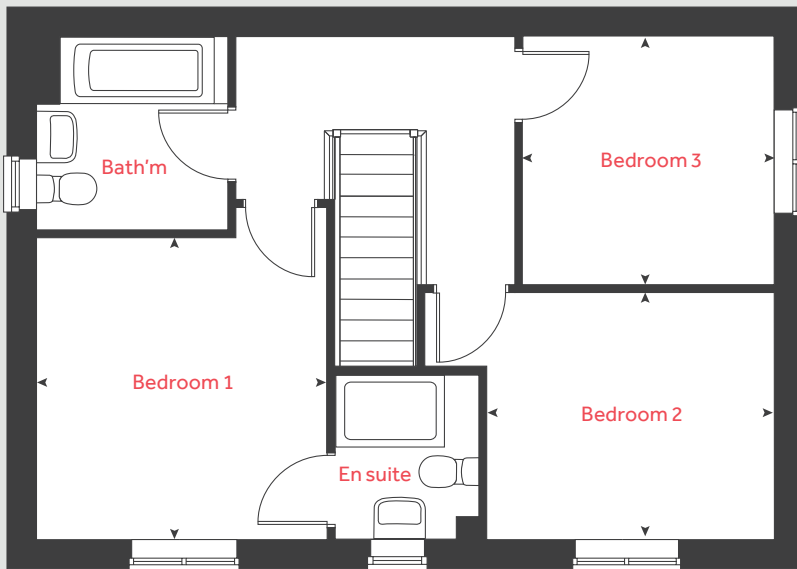
lindenhomes.co.uk

Linden
HOMES

The Mountford

3 bedroom home

First floor



Ground floor

Kitchen / dining area
5.59m x 2.68m 18' 4" x 8' 10"

Living room
5.59m x 3.12m 18' 4" x 10' 3"

First floor

Bedroom 1
3.35m x 3.17m 11' 0" x 10' 5"

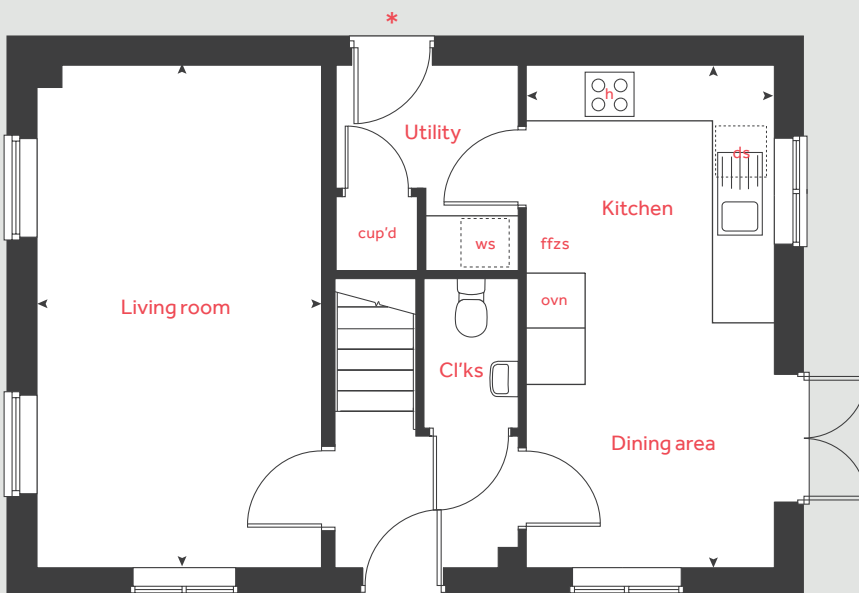
Bedroom 2
3.13m x 2.75m 10' 3" x 9' 0"

Bedroom 3
2.77m x 2.75m 9' 1" x 9' 0"

h	hob	ffzs	fridge freezer space
ovn	oven	cup'd	cupboard
ws	washing machine space	< >	measuring points
ds	dishwasher space		

* Utility door applies to selected detached plots only.
Please see sales consultant for further details.

Ground floor



Please note, floorplans and dimensions are taken from architectural drawings and are for guidance only. Dimensions stated are within a tolerance of plus or minus 50mm. Overall dimensions are usually stated and there may be projections into these. With our continual improvement policy we constantly review our designs and specification to ensure we deliver the best products to our customers. Computer generated images not to scale. Finishes and materials may vary and landscaping is illustrative only. Kitchen layouts are indicative only and may change. To confirm specific details on our homes please see our sales consultant.

Produced by Vistry Group Design Studio.

When you have finished with this leaflet please recycle it.

CA504 DS05539 / 09.23

Linden
HOMES



The Grainger

4 bedroom home

The Priors

Warwick, Warwickshire CV34 8BN | 01926 686749

lindenhomes.co.uk

Linden
HOMES

The Grainger

4 bedroom home

Ground floor

Kitchen / dining room
5.81m x 3.63m 19' 1" x 11' 11"

Living room
4.40m x 3.90m 14' 5" x 12' 10"

First floor

Bedroom 1
4.01m x 3.90m 13' 2" x 12' 10"

Bedroom 2
4.59m x 3.70m 15' 1" x 12' 2"

Bedroom 3
4.18m x 3.63m 13' 9" x 11' 11"

Bedroom 4
3.80m x 3.11m 12' 6" x 10' 2"

h	hob	ffzs	fridge freezer space
ovn	oven	cup'd	cupboard
ws	washing machine space	< >	measuring points
ds	dishwasher space		

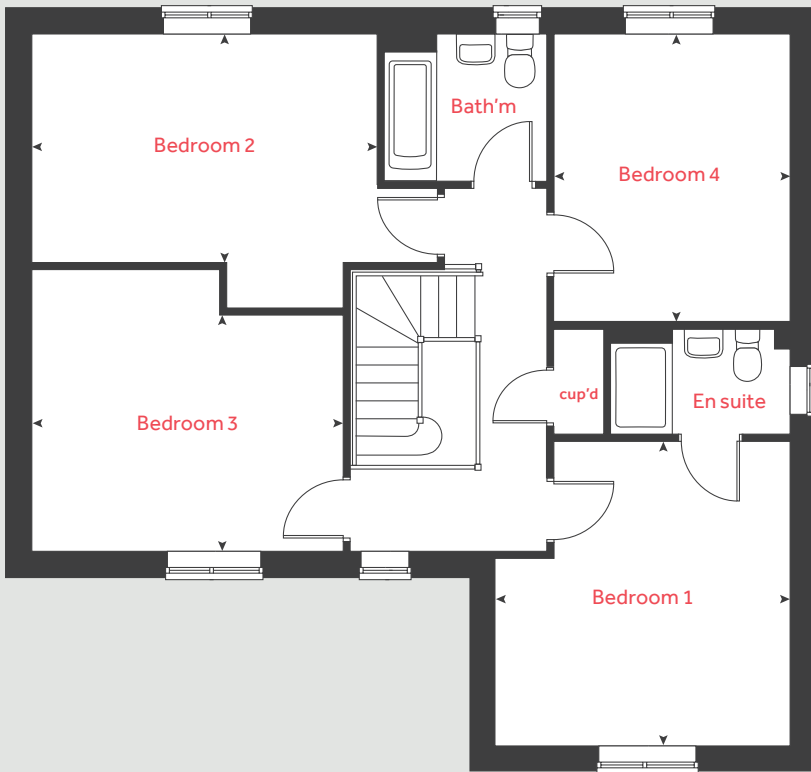
Please note, floorplans and dimensions are taken from architectural drawings and are for guidance only. Dimensions stated are within a tolerance of plus or minus 50mm. Overall dimensions are usually stated and there may be projections into these. With our continual improvement policy we constantly review our designs and specification to ensure we deliver the best products to our customers. Computer generated images not to scale. Finishes and materials may vary and landscaping is illustrative only. Kitchen layouts are indicative only and may change. To confirm specific details on our homes please see our sales consultant.

Produced by Vistry Group Design Studio.

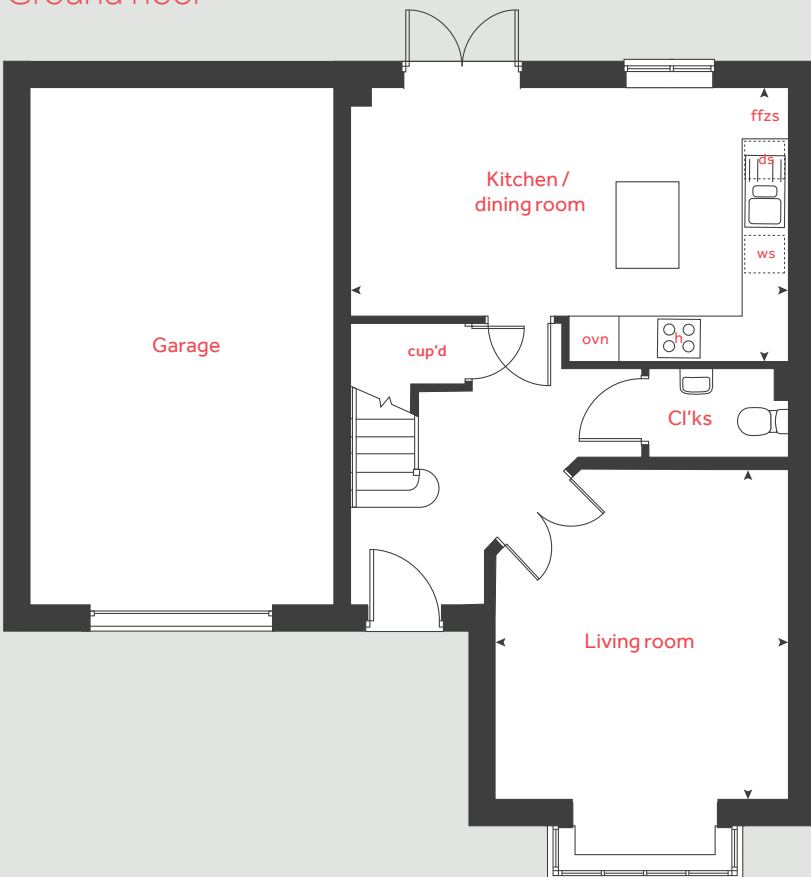
When you have finished with this leaflet please recycle it.

CA504 DS05539 / 09.23

First floor



Ground floor



Linden
HOMES



The Mylne

4 bedroom home

The Priors

Warwick, Warwickshire CV34 8BN | 01926 686749

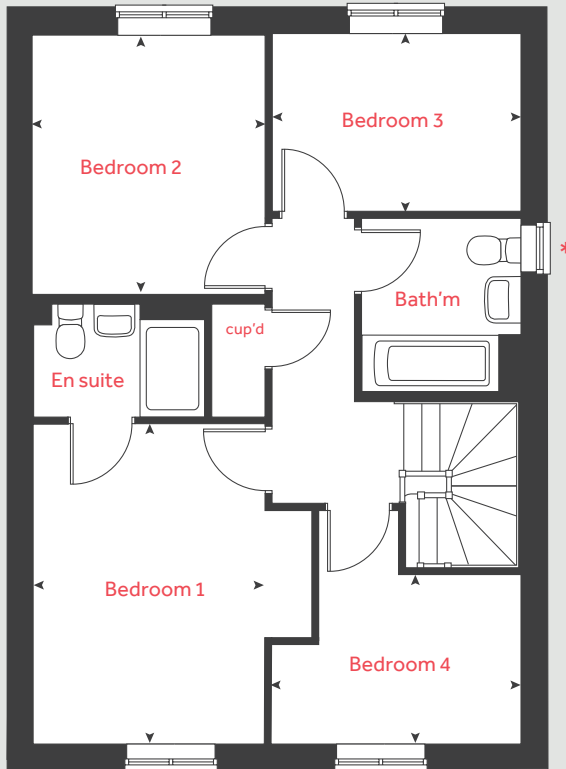
lindenhomes.co.uk

Linden
HOMES

The Mylne

4 bedroom home

First floor



Ground floor

Kitchen / dining / family area
6.04m x 4.38m 19' 10" x 14' 4"

Living room
4.84m x 3.40m 15' 11" x 11' 2"

First floor

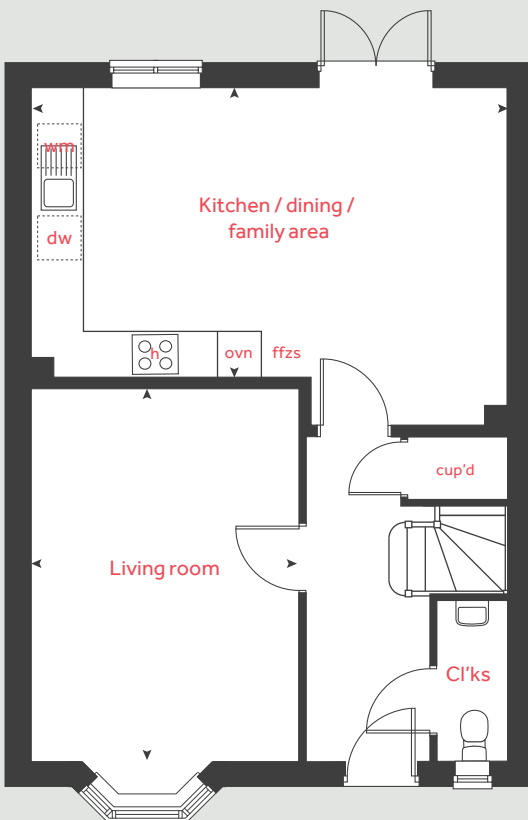
Bedroom 1
3.94m x 3.45m 12' 11" x 11' 4"

Bedroom 2
3.20m x 2.87m 10' 6" x 9' 5"

Bedroom 3
3.08m x 2.17m 10' 1" x 7' 1"

Bedroom 4
3.10m x 2.90m 10' 2" x 9' 6"

Ground floor



h	hob	ws	washing machine space
ovn	oven	cup'd	cupboard
ffzs	fridge freezer space	< >	measuring points
ds	dishwasher space		

* Window applies to selected plots only. Please see sales consultant for further details.

Please note, floorplans and dimensions are taken from architectural drawings and are for guidance only. Dimensions stated are within a tolerance of plus or minus 50mm. Overall dimensions are usually stated and there may be projections into these. With our continual improvement policy we constantly review our designs and specification to ensure we deliver the best products to our customers. Computer generated images not to scale. Finishes and materials may vary and landscaping is illustrative only. Kitchen layouts are indicative only and may change. To confirm specific details on our homes please see our sales consultant.

Produced by Vistry Group Design Studio.

When you have finished with this leaflet please recycle it.

CA504 DS05539 / 09.23

Linden HOMES



The Pembroke

4 bedroom home

The Priors

Warwick, Warwickshire CV34 8BN | 01926 686749

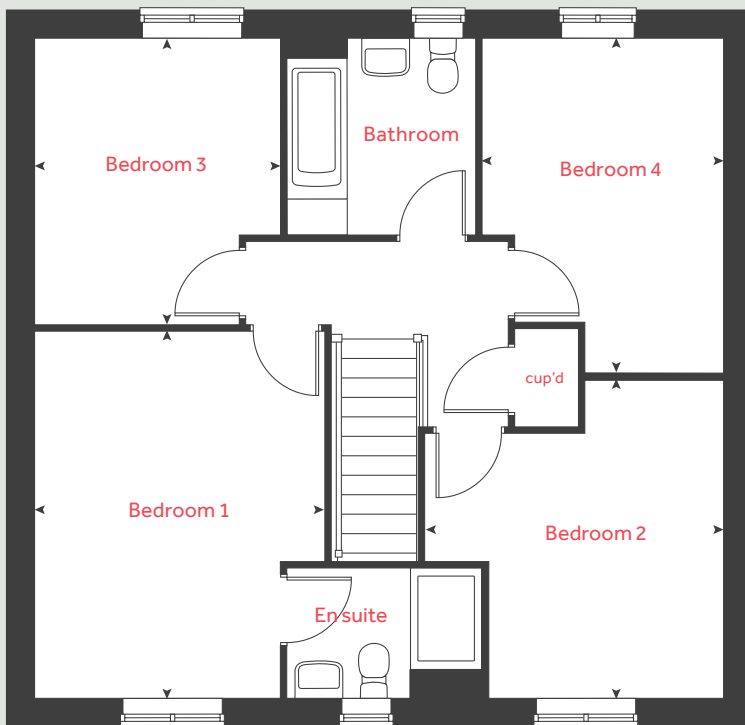
lindenhomes.co.uk

Linden
HOMES

The Pembroke

4 bedroom home

First floor



Ground floor

Kitchen / family / dining area

8.07m x 3.35m 26' 6" x 11' 0"

Living room

4.83m x 3.48m 15' 10" x 11' 5"

Study

2.40m x 2.36m 7' 10" x 7' 9"

First floor

Bedroom 1

4.28m x 3.38m 14' 1" x 11' 1"

Bedroom 2

3.72m x 3.45m 12' 2" x 11' 4"

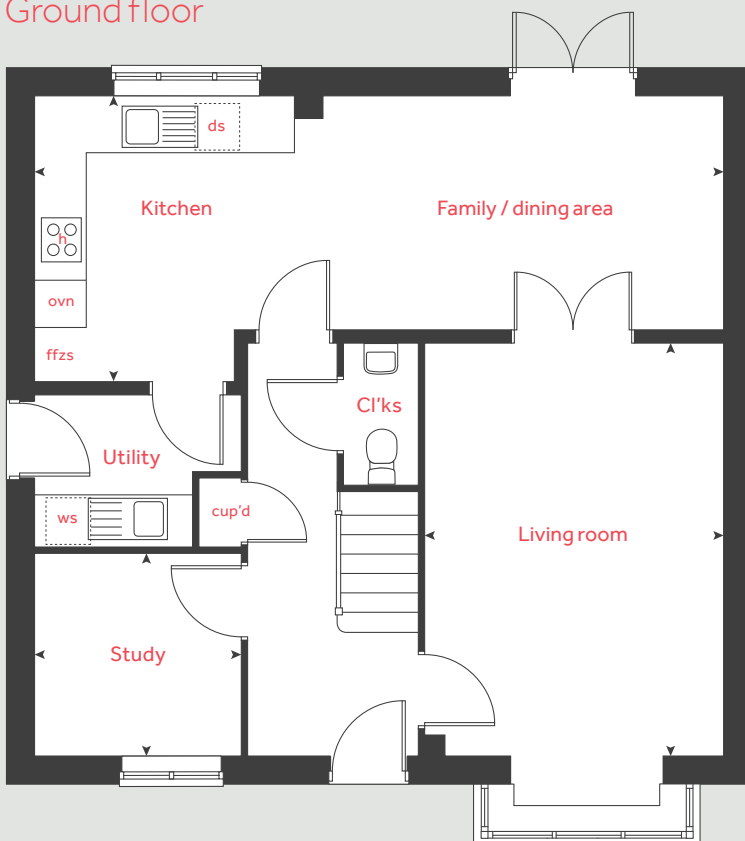
Bedroom 3

3.36m x 2.87m 11' 0" x 9' 5"

Bedroom 4

3.92m x 2.81m 12' 10" x 9' 3"

Ground floor



h	hob	ffzs	fridge freezer space
ovn	oven	ts	tumble dryer space
ws	washing machine space	cup'd	cupboard
ds	dishwasher space	◀ ▶	measuring points

Please note, floorplans and dimensions are taken from architectural drawings and are for guidance only. Dimensions stated are within a tolerance of plus or minus 50mm. Overall dimensions are usually stated and there may be projections into these. With our continual improvement policy we constantly review our designs and specification to ensure we deliver the best products to our customers. Computer generated images not to scale. Finishes and materials may vary and landscaping is illustrative only. Kitchen layouts are indicative only and may change. To confirm specific details on our homes please see our sales consultant.

Produced by Vistry Group Design Studio.

When you have finished with this leaflet please recycle it.

CA504 DS05539 / 09.23

Linden

HOMES



The Cottingham

4 bedroom home

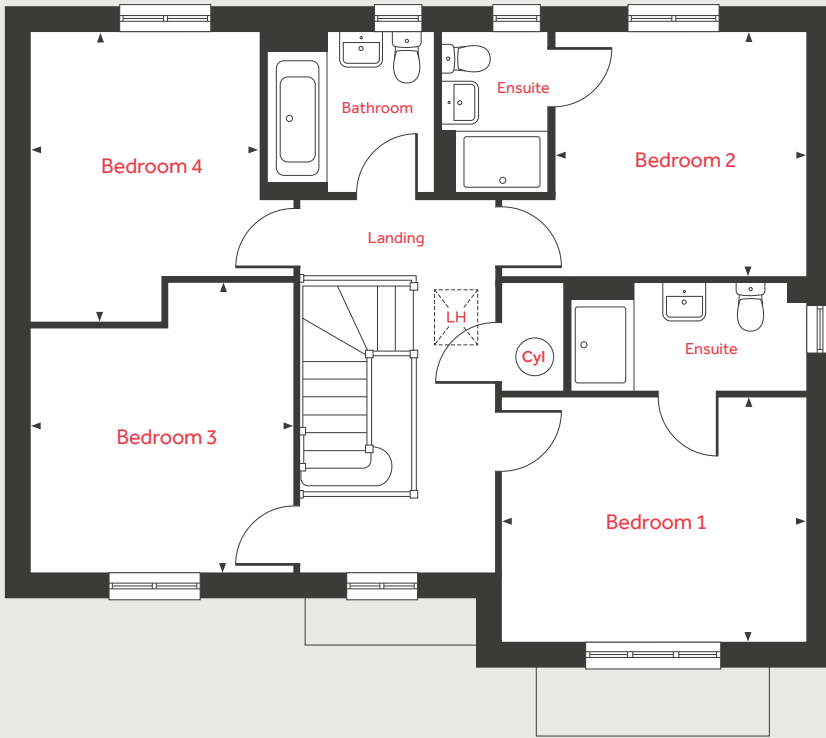
The Priors

Warwick, Warwickshire CV34 6SJ | 01926 686749

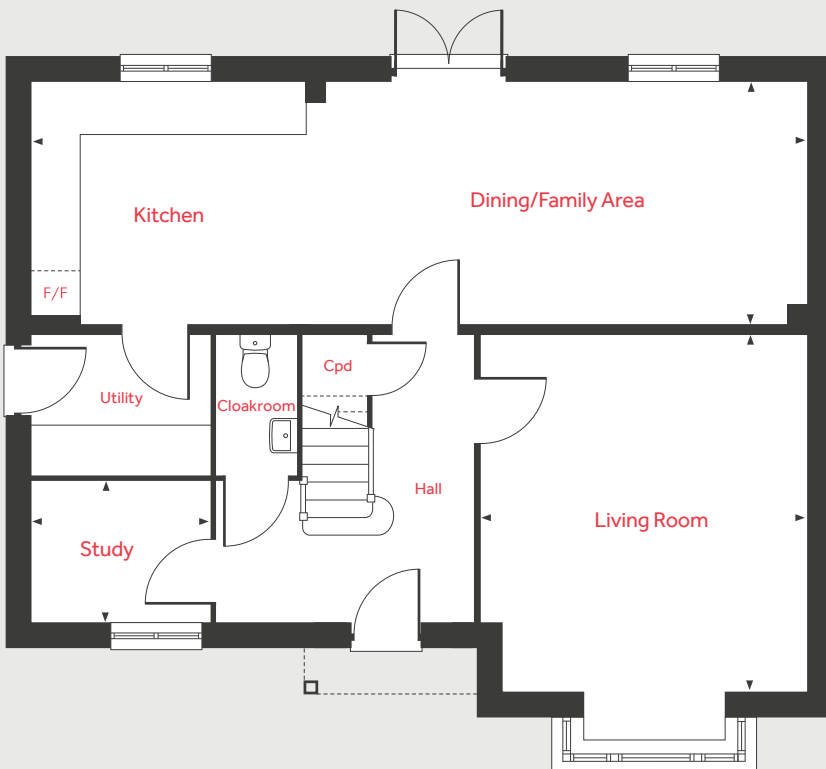
lindenhomes.co.uk/thepriors

Linden
HOMES

First Floor



Ground Floor



The Cottingham

4 bedroom home

Ground Floor

Living Room

4.60m x 4.18m 15'1" x 13'9"

Kitchen/Dining/Family Area

9.98m x 3.10m 32'9" x 10'2"

Study

2.25m x 1.79m 7'5" x 5'10"

First Floor

Bedroom 1

3.90m x 3.14m 12'10" x 10'4"

Bedroom 2

3.22m x 3.12m 10'7" x 10'3"

Bedroom 3

3.72m x 3.38m 12'2" x 11'1"

Bedroom 4

3.73m x 2.94m 12'3" x 9'8"

LH	Loft hatch	F/F	Integrated fridge freezer
Cyl	Hot water cylinder	◀ ▶	Measuring points
Cpd	Cupboard		

Please note, floorplans and dimensions are taken from architectural drawings and are for guidance only. Dimensions stated are within a tolerance of plus or minus 50mm. Overall dimensions are usually stated and there may be projections into these. With our continual improvement policy we constantly review our designs and specification to ensure we deliver the best product to our customers. Computer generated images not to scale. Finishes and materials may vary and landscaping is illustrative only. Kitchen layouts are indicative only and may change. To confirm specific details on our homes please ask your Sales Consultant. VHEUR 09/September 2020.

Unique specification

Part of the excitement of buying a new home is the thrill of being the first person to live in the property and having a brand new luxury kitchen and modern bathroom.

Our premium brand partners ensure that all of our fixtures and fittings comply with the latest Government building

regulations and only branded appliances are installed in your new home.

The availability of some items is subject to the stage of build, but our sales consultants will be happy to provide guidance every step of the way.

Kitchen

3 bedroom
The Elliot
The Mountford
The Wyatt II
4 bedroom
The Aslin II
The Mylne
The Burnet
The Grainger
The Pembroke

Symphony Konzept range kitchen with laminate worktop	■	■	■	■	■	■	■	■
Stainless steel sink and drainer (single bowl) with chrome mixer tap	■	■	■	■	■	■	■	■
Stainless steel sink and drainer (single bowl) with chrome mixer tap in utility			■					■
Indesit hob (60cm) with Indesit built-in single under oven, with stainless steel splashback and integrated silver hood	■	■	■					
Indesit hob (60 cm) with built-in single under oven, with stainless steel splashback and 60cm stainless steel chimney hood				■	■	■	■	■
White pendant light holder	■	■	■	■	■	■	■	■
Fridge / freezer space	■	■	■	■	■	■	■	■
Space for integrated dishwasher with plumbing and electrics	■	■	■	■	■	■	■	■
Space for washing machine with plumbing and electrics in kitchen	■		■	■	■	■		
Space for washing machine with plumbing and electrics in utility		■						■

Bathrooms and en suite(s)

3 bedroom
The Elliot
The Mountford
The Wyatt II
4 bedroom
The Aslin II
The Mylne
The Burnet
The Grainger
The Pembroke

Ideal Standard contemporary white Tempo sanitary ware	■	■	■	■	■	■	■	■
Ideal Standard close coupled WC to cloakroom	■	■	■	■	■	■	■	■
Ideal Standard low profile shower tray with glass enclosure in en suite	■	■	■	■	■	■	■	■
Handheld hair wash attachment in bathroom	■	■	■	■	■	■	■	■
Choice of standard Porcelanosa wall tiling (splashback, 450mm height over bath, and full-height to shower cubicle)	■	■	■	■	■	■	■	■
White batten light holder	■	■	■	■	■	■	■	■

Doors and Windows

3 bedroom
The Elliot
The Mountford
The Wyatt II
4 bedroom
The Aslin II
The Mylne
The Burnet
The Grainger
The Pembroke

Front door with multi-point security locking system and security chain	■	■	■	■	■	■	■	■
PVCu double glazing to windows	■	■	■	■	■	■	■	■
Double glazed PVCu French doors	■	■	■	■	■	■	■	■
Internal doors to be ladder door style pre-primed with satin finish handles	■	■	■	■	■	■	■	■
Paving outside French doors	■	■	■	■	■	■	■	■

General

White painted walls and smooth white ceilings	■	■	■	■	■	■	■	■
TV point to lounge and family room (where applicable)	■	■	■	■	■	■	■	■
Master telephone socket to lounge	■	■	■	■	■	■	■	■
Ideal combi-boiler with Honeywell heating control and room thermostat(s)	■	■	■	■	■	■	■	■
Thermostatic valves to all radiators (with the exception of rooms with separate thermostat control)	■	■	■	■	■	■	■	■
Contemporary lantern to front door and wiring only to the rear door	■	■	■	■	■	■	■	■
Mains wired smoke detectors with battery back-up	■	■	■	■	■	■	■	■
Battery powered Carbon Monoxide detector (wall mounted) to be provided for each floor	■	■	■	■	■	■	■	■
Power and lighting to garage (where applicable)			■			■		■
Enclosed fenced rear garden, and garden gate (where applicable)	■	■	■	■	■	■	■	■
NHBC Buildmark cover	■	■	■	■	■	■	■	■
First two years' customer service support from Linden Homes	■	■	■	■	■	■	■	■

- Fitted as standard - included in the property
- * Subject to stage of construction



The specification shown in this leaflet is correct at the time of going to press. Linden Homes is continually reviewing and updating the specification on all housetypes and therefore reserves the right to change specification details. Photographs depict a typical Linden Homes interior and may include optional upgrades. For full details regarding current specification and finishes, for the plots you are interested in, please refer to our sales consultant.