

## Around the local neighbourhood

- 1** Bishop Wordsworth's School  
SP1 2ED
- 2** Waitrose & Partners  
SP2 7TS
- 3** Sainsbury's  
SP1 1BD
- 4** Salisbury Water Meadows  
SP2 7RZ
- 5** Manor Farm Nursery School  
SP2 8PU
- 6** Salisbury District Hospital  
SP2 8BJ
- 7** Mompesson House  
SP1 2EL
- 8** Salisbury Cathedral  
SP1 2EJ
- 9** Salisbury Train Station  
SP2 7RS

Cover photograph of Salisbury Cathedral across Harnham water meadows. Not view from the development.  
The street scene shown has been produced for illustrative purposes only. Please check the details of the homes you are interested in with our sales consultant.

When you have finished with this leaflet please recycle it.

## Wilton Gate Netherhampton

Our fantastic selection of 2, 3 and 4 bedroom homes at Wilton Gate, in the charming village of Netherhampton.

Our collection of new homes at Wilton Gate, in the charming village of Netherhampton, located on the edge of Salisbury, is an ideal location offering a primary school, local centre, employment opportunities, and a country park nearby. Not to mention it is easy to access Andover, Warminster, Southampton, and Bath.

Salisbury boasts a rich history with its roots in the cloth industry, the Kennet & Avon Canal, and the Great Western Railway.

The famous Salisbury cathedral is just 2 miles away, where you can find the best-preserved copy of the Magna Carta in the world. It doesn't just offer history, there is plenty of natural beauty surrounding the area for you to enjoy.

Isn't it time to visit the beautiful new homes at Wilton Gate to see what it has to offer?!

Linden Homes, Vistry Bristol  
The Jacobs Building, Berkeley Place, Clifton,  
Bristol BS8 1EH T. 01722 638 969

Produced by House Marketing 205023

[lindenhomes.co.uk](http://lindenhomes.co.uk)



**Linden**  
HOMES

### Wilton Gate

Netherhampton Road, Salisbury, SP2 8RA | 01722 704 454

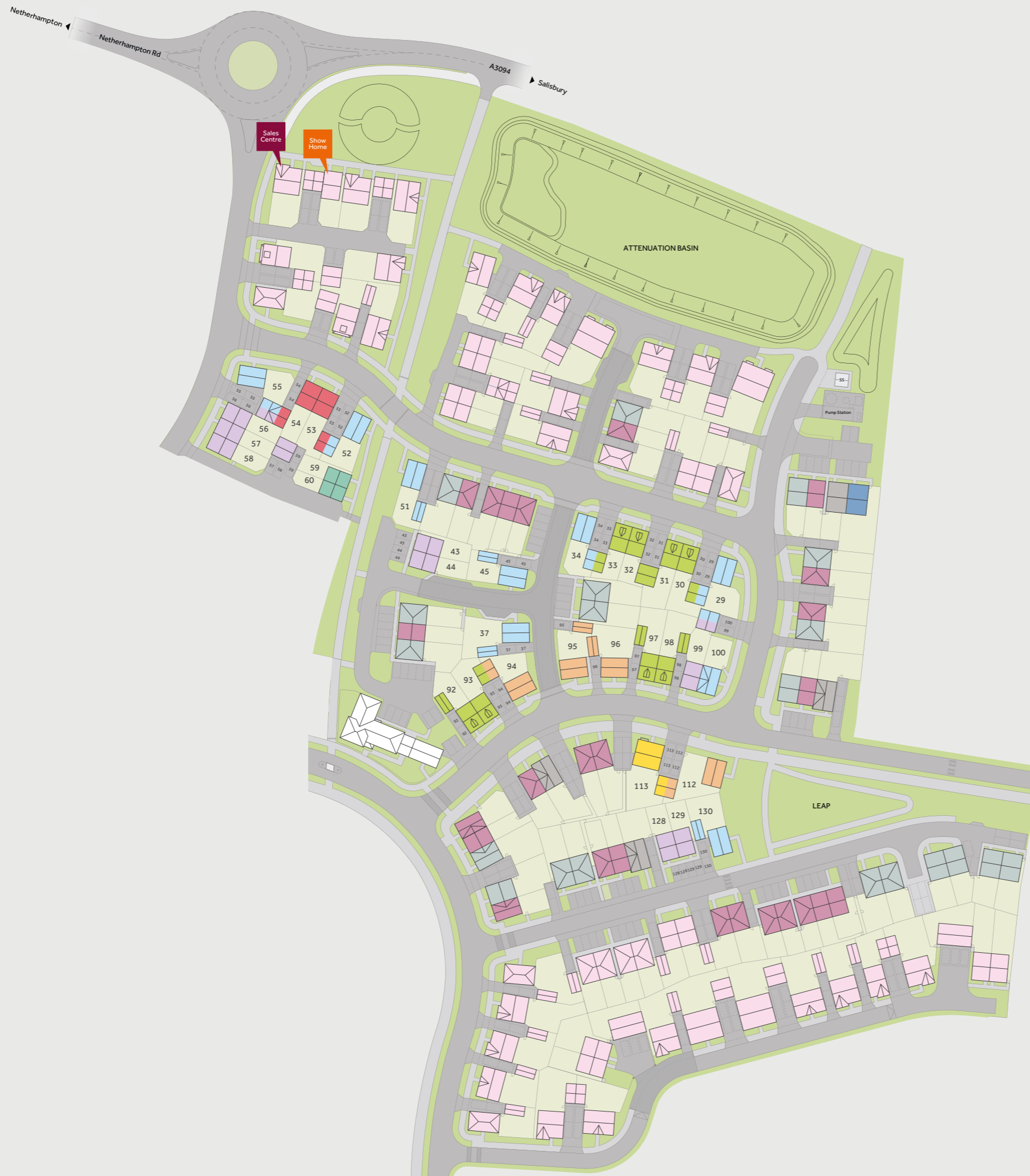
[lindenhomes.co.uk](http://lindenhomes.co.uk)

**Linden**  
HOMES

# Wilton Gate

## Netherhampton

### Development layout



#### 4 bedroom home

- The Aslin
- The Pembroke

#### 3 bedroom home

- The Berkley
- The Eveleigh
- The Mountford
- The Mountford II

#### 2 bedroom home

- The Harcourt

- Bovis Homes

#### Pre-sold homes

- 2 bedroom homes
- 3 bedroom homes
- 4 bedroom homes
- 5 bedroom homes

- By another developer

- v visitor space
- cs cycle store
- ss sub station

The site plan which can be found on this page, has been produced for home identification purposes only and is not to scale. The development layout, landscaping and tenure of all dwellings may be subject to change throughout the course of the development. Finishes and materials may vary from those shown on the plan. Please check the details of your chosen plot and house type with the sales consultant. Development layout plan correct at time of production.



# The Harcourt

2 bedroom home

## Wilton Gate

Netherhampton Road,  
Salisbury, SP2 8RA | 01722 704 454

[lindenhomes.co.uk](http://lindenhomes.co.uk)



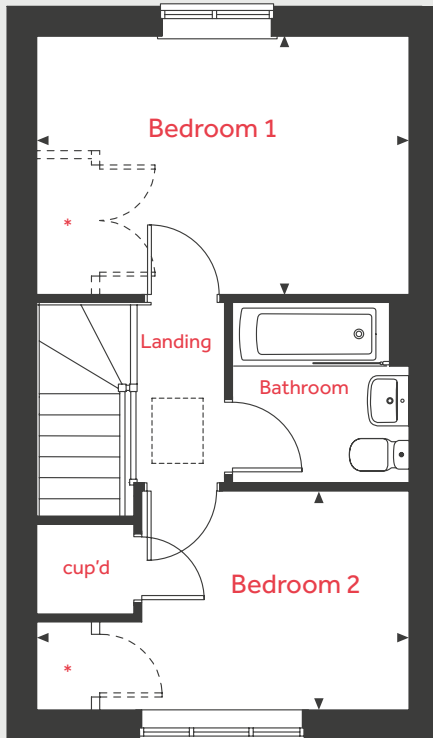
**Linden**  
HOMES

# The Harcourt

2 bedroom home

Homes 59, 60

## First Floor



## Ground Floor

### Kitchen / Dining area

4.56m x 2.01m 15'0" x 6'7"

### Living room

4.08m x 2.74m 13'5" x 9'0"

## First Floor

### Bedroom 1

4.08m x 2.83m 13'5" x 9'3"

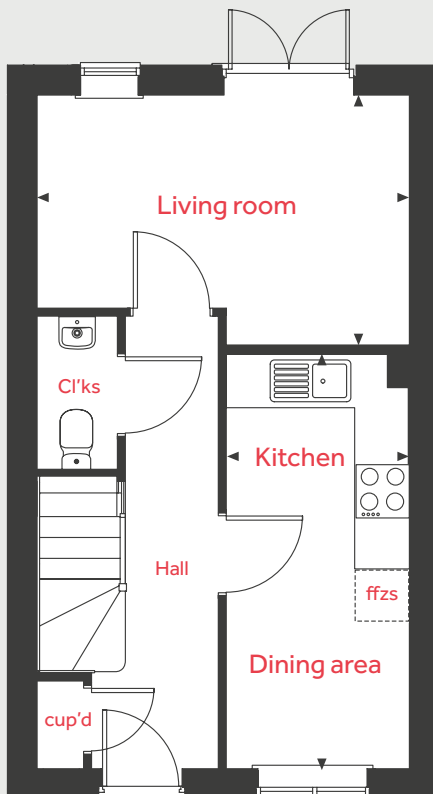
### Bedroom 2

4.08m x 2.40m 13'5" x 7'10"

ovn	oven	cup'd	cupboard
h	hob	< >	measuring points
[ ]	loft hatch	- - -	reduced ceiling height
ffzs	fridge freezer space		

\* Optional fitted wardrobe for optional customer upgrade.

## Ground Floor



The illustrations shown are computer generated impressions of how the property may look and are indicative only. External details or finishes may vary on individual plots and homes may be built in either detached or attached styles depending on the development layout. Exact specifications, window styles and whether a property is left or righthanded may differ from plot to plot. Please speak to our sales consultant for specific plot details.

The floorplan has been produced for illustrative purposes only. Room sizes shown are between arrow points as indicated on plan. The dimensions have tolerances of + or -50mm and should not be used other than for general guidance. If specific dimensions are required, enquiries should be made to the sales consultant. The floor plans shown are not to scale. Measurements are based on the original drawings. Slight variations may occur during construction.

03.24

**Linden**  
HOMES



# The Mountford

3 bedroom home

## Wilton Gate

Netherhampton Road,  
Salisbury, SP2 8RA | 01722 704 454

[lindenhomes.co.uk](http://lindenhomes.co.uk)



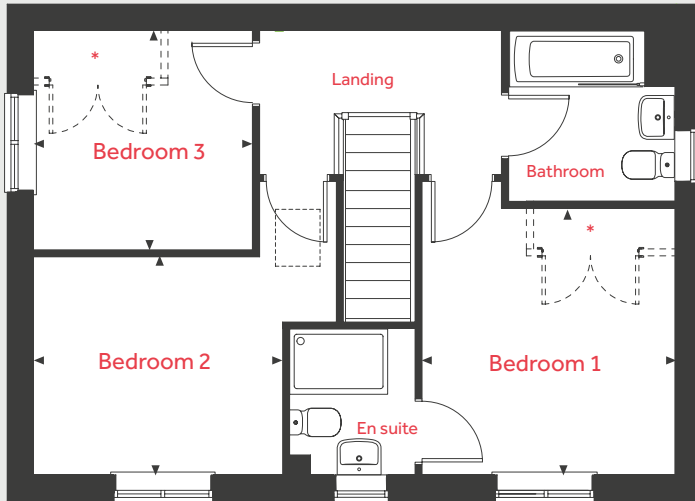
**Linden**  
HOMES

# The Mountford

3 bedroom home

Homes 29, 34, 37, 45, 51, 52, 55,  
100, 130

## First Floor



## Ground Floor

### Kitchen / Dining area

5.59m x 2.70m 18'4" x 8'10"

### Living room

5.59m x 3.13m 18'4" x 10'3"

## First Floor

### Bedroom 1

3.35m x 3.18m 11'0" x 10'5"

### Bedroom 2

3.14m x 2.74m 10'4" x 9'0"

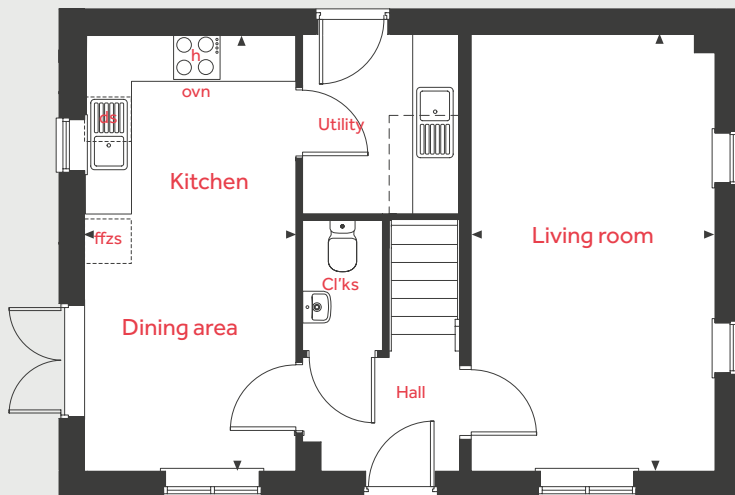
### Bedroom 3

2.76m x 2.76m 9'1" x 9'1"

ovn	oven	cup'd	cupboard
h	hob	< >	measuring points
ffzr	loft hatch	- - -	reduced ceiling height
	fridge freezer space		

\* Optional fitted wardrobe for optional customer upgrade.

## Ground Floor



The illustrations shown are computer generated impressions of how the property may look and are indicative only. External details or finishes may vary on individual plots and homes may be built in either detached or attached styles depending on the development layout. Exact specifications, window styles and whether a property is left or righthanded may differ from plot to plot. Please speak to our sales consultant for specific plot details.

The floorplan has been produced for illustrative purposes only. Room sizes shown are between arrow points as indicated on plan. The dimensions have tolerances of + or -50mm and should not be used other than for general guidance. If specific dimensions are required, enquiries should be made to the sales consultant. The floor plans shown are not to scale. Measurements are based on the original drawings. Slight variations may occur during construction.

03.24

**Linden**  
HOMES



# The Mountford II

3 bedroom home

## Wilton Gate

Netherhampton Road,  
Salisbury, SP2 8RA | 01722 704 454

[lindenhomes.co.uk](http://lindenhomes.co.uk)



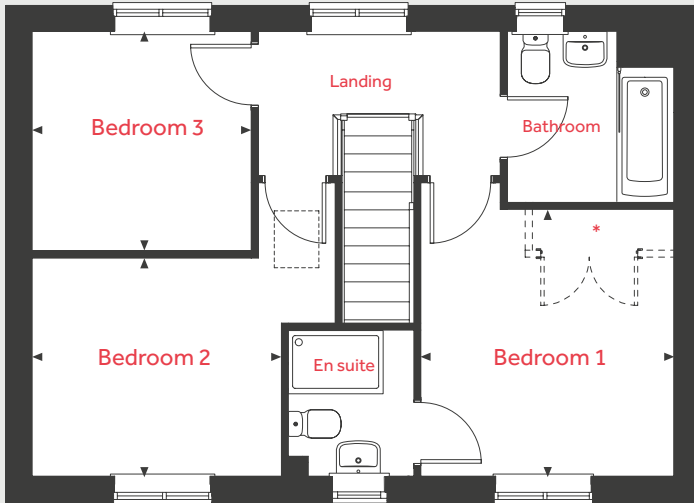
**Linden**  
HOMES

# The Mountford II

3 bedroom home

Homes 94, 95, 96, 112

## First Floor



## Ground Floor

### Kitchen / Dining area

5.59m x 2.70m 18'4" x 8'10"

### Living room

5.59m x 3.13m 18'4" x 10'3"

## First Floor

### Bedroom 1

3.35m x 3.18m 11'0" x 10'5"

### Bedroom 2

3.14m x 2.74m 10'4" x 9'0"

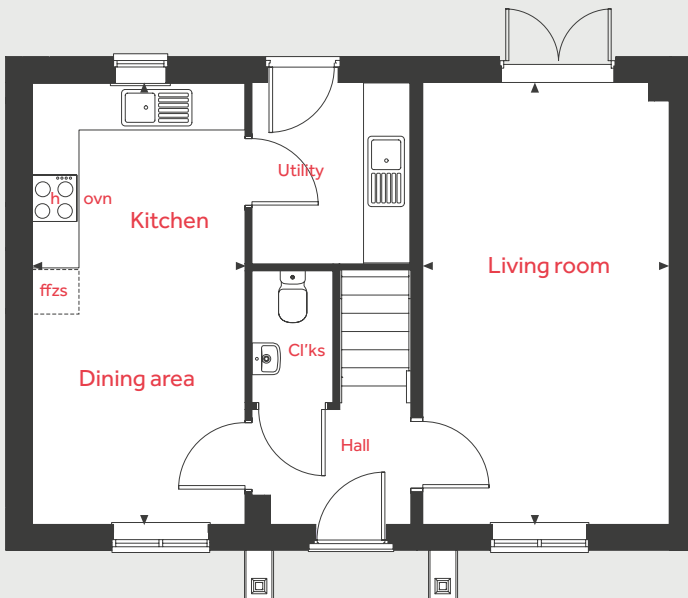
### Bedroom 3

2.76m x 2.76m 9'1" x 9'1"

ovn	oven	cup'd	cupboard
h	hob	< >	measuring points
ffzs	loft hatch	---	reduced ceiling height
	ffzs		fridge freezer space

\* Optional fitted wardrobe for optional customer upgrade.

## Ground Floor



The illustrations shown are computer generated impressions of how the property may look and are indicative only. External details or finishes may vary on individual plots and homes may be built in either detached or attached styles depending on the development layout. Exact specifications, window styles and whether a property is left or righthanded may differ from plot to plot. Please speak to our sales consultant for specific plot details.

The floorplan has been produced for illustrative purposes only. Room sizes shown are between arrow points as indicated on plan. The dimensions have tolerances of + or -50mm and should not be used other than for general guidance. If specific dimensions are required, enquiries should be made to the sales consultant. The floor plans shown are not to scale. Measurements are based on the original drawings. Slight variations may occur during construction.

03.24

**Linden**  
HOMES





# The Berkley

3 bedroom home

## Wilton Gate

Netherhampton Road,  
Salisbury, SP2 8RA | 01722 704 454

[lindenhomes.co.uk](http://lindenhomes.co.uk)



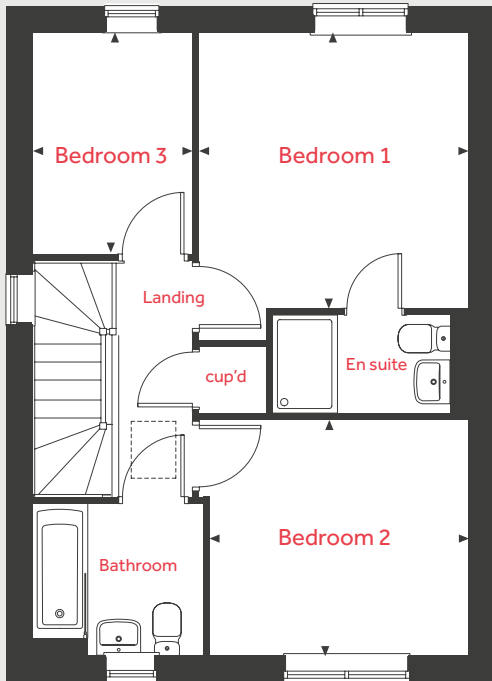
**Linden**  
HOMES

# The Berkley

3 bedroom home

Homes 53, 54

## First Floor



## Ground Floor

### Kitchen / Dining area

5.49m x 3.17m 18'0" x 10'5"

### Living room

4.58m x 3.15m 15'0" x 10'4"

## First Floor

### Bedroom 1

3.46m x 3.38m 11'4" x 11'1"

### Bedroom 2

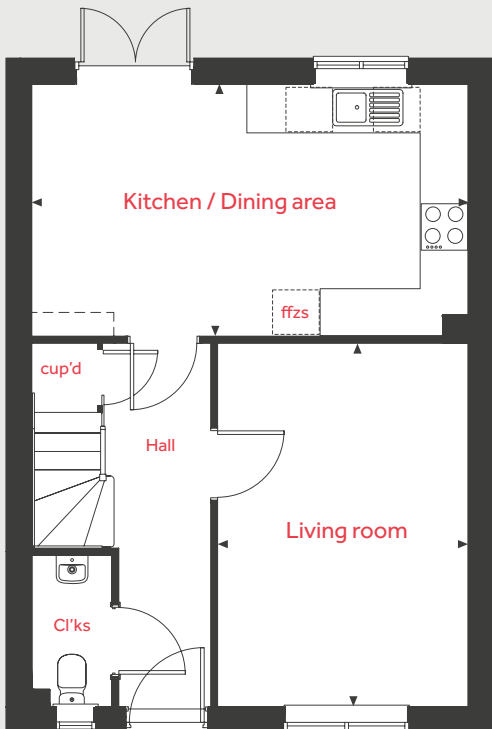
3.21m x 2.98m 10'6" x 9'9"

### Bedroom 3

2.79m x 2.02m 9'2" x 6'8"

ovn	oven	cup'd	cupboard
h	hob	< >	measuring points
	loft hatch	- - -	reduced ceiling height
ffzs	fridge freezer space		

## Ground Floor



The illustrations shown are computer generated impressions of how the property may look and are indicative only. External details or finishes may vary on individual plots and homes may be built in either detached or attached styles depending on the development layout. Exact specifications, window styles and whether a property is left or righthanded may differ from plot to plot. Please speak to our sales consultant for specific plot details.

The floorplan has been produced for illustrative purposes only. Room sizes shown are between arrow points as indicated on plan. The dimensions have tolerances of + or -50mm and should not be used other than for general guidance. If specific dimensions are required, enquiries should be made to the sales consultant. The floor plans shown are not to scale. Measurements are based on the original drawings. Slight variations may occur during construction.

03.24



# The Eveleigh

3 bedroom home

## Wilton Gate

Netherhampton Road,  
Salisbury, SP2 8RA | 01722 704 454

[lindenhomes.co.uk](http://lindenhomes.co.uk)



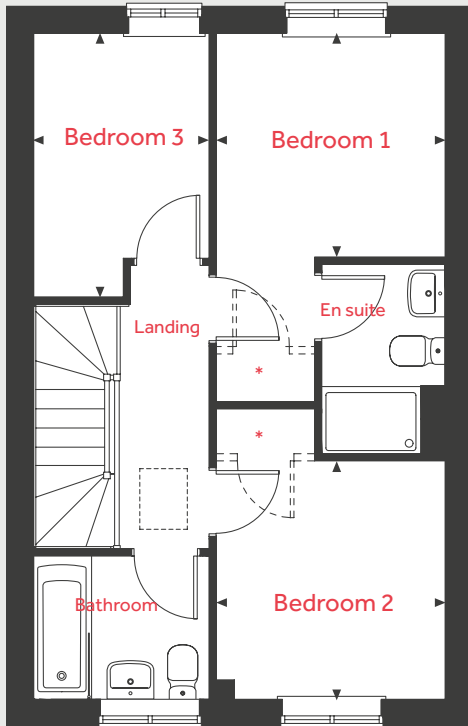
**Linden**  
HOMES

# The Eveleigh

3 bedroom home

Homes 43, 44, 56, 57, 58, 99, 128, 129

## First Floor



## Ground Floor

### Kitchen / Dining area

4.78m x 2.77m 15'8" x 9'1"

### Living room

4.98m x 3.19m 16'4" x 10'6"

## First Floor

### Bedroom 1

2.77m x 2.71m 9'1" x 8'11"

### Bedroom 2

2.89m x 2.77m 9'6" x 9'1"

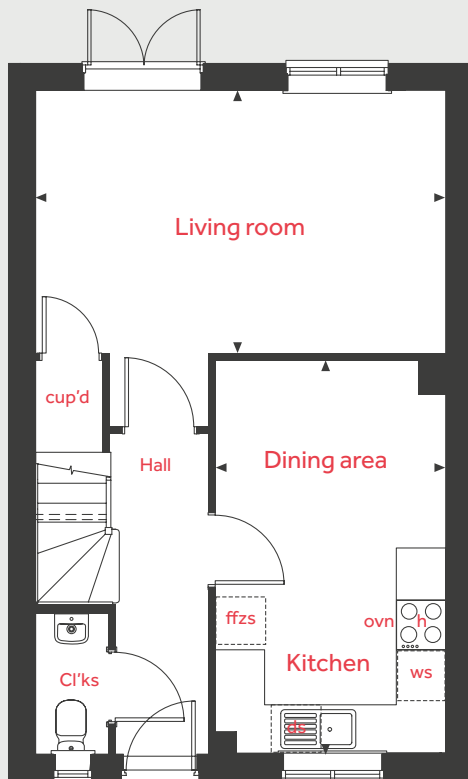
### Bedroom 3

3.19m x 2.12m 10'6" x 6'11"

ovn	oven	cup'd	cupboard
h	hob	< >	measuring points
[ ]	loft hatch	- - -	reduced ceiling height
ffzs	fridge freezer space		

\* Optional fitted wardrobe for optional customer upgrade.

## Ground Floor



The illustrations shown are computer generated impressions of how the property may look and are indicative only. External details or finishes may vary on individual plots and homes may be built in either detached or attached styles depending on the development layout. Exact specifications, window styles and whether a property is left or righthanded may differ from plot to plot. Please speak to our sales consultant for specific plot details.

The floorplan has been produced for illustrative purposes only. Room sizes shown are between arrow points as indicated on plan. The dimensions have tolerances of + or -50mm and should not be used other than for general guidance. If specific dimensions are required, enquiries should be made to the sales consultant. The floor plans shown are not to scale. Measurements are based on the original drawings. Slight variations may occur during construction.

03.24

**Linden**  
HOMES



# The Pembroke

4 bedroom home

## Wilton Gate

Netherhampton Road,  
Salisbury, SP2 8RA | 01722 704 454

[lindenhomes.co.uk](http://lindenhomes.co.uk)



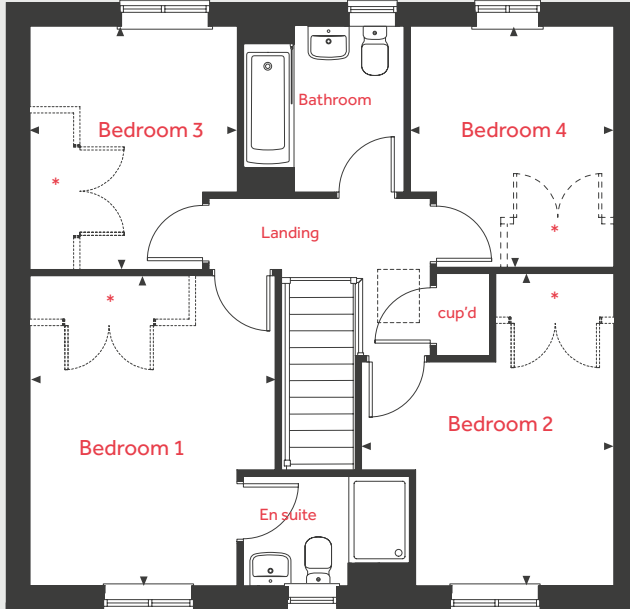
**Linden**  
HOMES

# The Pembroke

4 bedroom home

Homes 113

## First Floor



## Ground Floor

Family / Dining area / Kitchen

8.07m x 2.76m 26'6" x 9'1"

Living room

4.84m x 3.49m 15'11" x 11'5"

Study

2.40m x 2.36m 7'10" x 7'9"

## First Floor

Bedroom 1

4.28m x 3.39m 14'1" x 11'1"

Bedroom 2

4.31m x 3.49m 14'2" x 11'5"

Bedroom 3

3.36m x 2.86m 11'0" x 9'5"

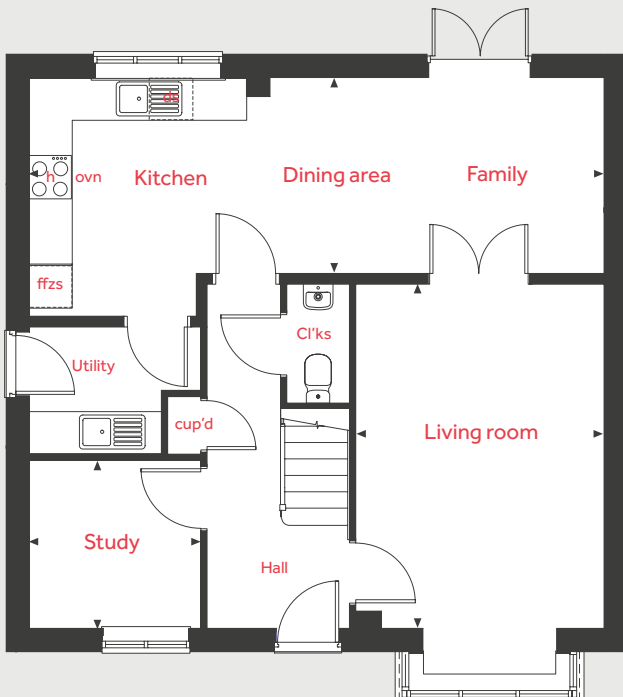
Bedroom 4

3.33m x 2.81m 10'11" x 9'3"

ovn	oven	cup'd	cupboard
h	hob	< >	measuring points
ffz	loft hatch	---	reduced ceiling height
ffzr	fridge freezer space		

\* Optional fitted wardrobe for optional customer upgrade.

## Ground Floor



The illustrations shown are computer generated impressions of how the property may look and are indicative only. External details or finishes may vary on individual plots and homes may be built in either detached or attached styles depending on the development layout. Exact specifications, window styles and whether a property is left or righthanded may differ from plot to plot. Please speak to our sales consultant for specific plot details.

The floorplan has been produced for illustrative purposes only. Room sizes shown are between arrow points as indicated on plan. The dimensions have tolerances of + or -50mm and should not be used other than for general guidance. If specific dimensions are required, enquiries should be made to the sales consultant. The floor plans shown are not to scale. Measurements are based on the original drawings. Slight variations may occur during construction.

03.24

**Linden**  
HOMES



# The Aslin

4 bedroom home

## Wilton Gate

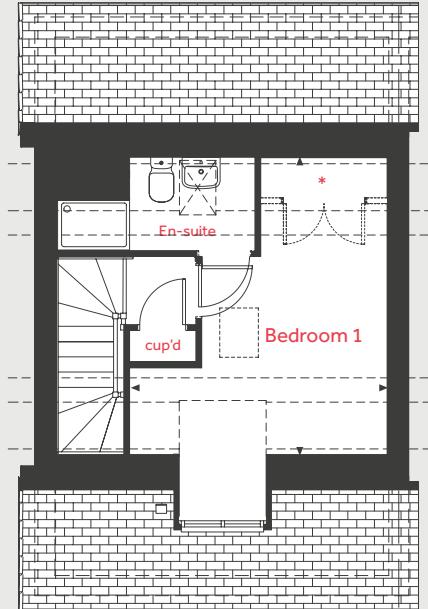
Netherhampton Road,  
Salisbury, SP2 8RA | 01722 704 454

[lindenhomes.co.uk](http://lindenhomes.co.uk)

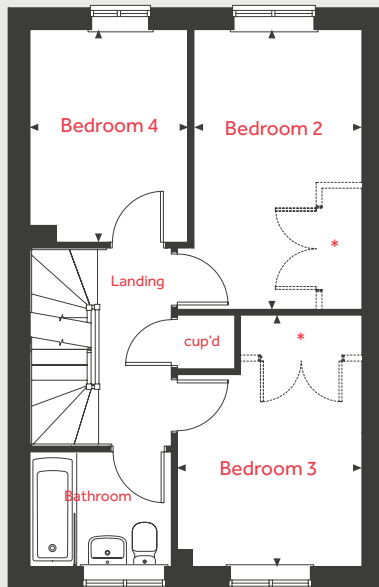


**Linden**  
HOMES

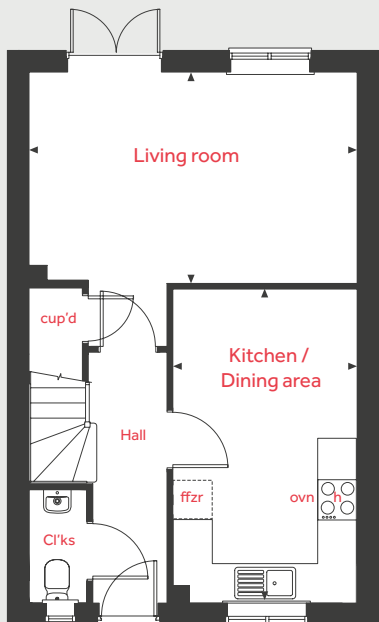
## Second Floor



## First Floor



## Ground Floor



# The Aslin

4 bedroom home

Homes 30, 31, 32, 33, 92, 93, 97, 98

### Ground Floor

Kitchen / Dining area

4.77m x 2.80m 15'8" x 9'2"

Living room

4.98m x 3.21m 16'4" x 10'6"

### First Floor

Bedroom 2

4.20m x 2.52m 13'9" x 8'3"

Bedroom 3

3.76m x 2.77m 12'4" x 9'1"

Bedroom 4

3.19m x 2.37m 10'6" x 7'9"

### Second Floor

Bedroom 1

4.48m x 3.88m 14'8" x 12'9"

ovn	oven	cup'd	cupboard
h	hob	< >	measuring points
ffzr	loft hatch	---	reduced ceiling height
	fridge freezer		

\* Optional fitted wardrobe for optional customer upgrade.

The illustrations shown are computer generated impressions of how the property may look and are indicative only. External details or finishes may vary on individual plots and homes may be built in either detached or attached styles depending on the development layout. Exact specifications, window styles and whether a property is left or righthanded may differ from plot to plot. Please speak to our sales consultant for specific plot details.

The floorplan has been produced for illustrative purposes only. Room sizes shown are between arrow points as indicated on plan. The dimensions have tolerances of + or - 50mm and should not be used other than for general guidance. If specific dimensions are required, enquiries should be made to the sales consultant. The floor plans shown are not to scale. Measurements are based on the original drawings. Slight variations may occur during construction.

03.24

**Linden**  
HOMES





## Specification

We give you so much more

The specification shown is correct at the time of production. Linden Homes is continually reviewing and updating the specification on all house/apartment types and therefore reserves the right to change specification details. Photographs depict typical Linden Homes interiors and may include optional upgrades. For full details regarding the current specification and finishes, please speak to our sales consultant.

When you have finished with this leaflet please recycle it.

Linden Homes, Vistry Bristol  
The Jacobs Building, Berkeley Place, Clifton,  
Bristol BS8 1EH T: 01722 638 969

Produced by House Marketing 205023

[lindenhomes.co.uk](http://lindenhomes.co.uk)



**Linden**  
HOMES

**Wilton Gate**

Netherhampton Road, Salisbury, SP2 8RA | 01722 704 454

[lindenhomes.co.uk](http://lindenhomes.co.uk)

**Linden**  
HOMES

# Wilton Gate

## Netherhampton

### We give you so much more

Each home will be independently surveyed during construction by NHBC, who will issue their 10 year warranty certificate on completion of the home.



2 bedroom  
The Harcourt  
3 bedroom  
The Berkley  
The Eveleigh  
The Mountford  
The Mountford II  
4 bedroom  
The Aslin  
The Pembroke

### Kitchen

Symphony Konzept range kitchen with laminate worktop	■	■	■	■	■	■	■
Stainless steel sink and drainer (single bowl) with chrome mixer tap	■	■	■	■	■	■	■
Stainless steel sink and drainer (single bowl) with chrome mixer tap in utility				■	■		■
Indesit hob (60cm) with Indesit built-in single under oven, with stainless steel splashback and integrated silver hood	■	■	■	■	■		
Indesit hob (60 cm) with built-in single under oven, with stainless steel splashback and 60cm stainless steel chimney hood						■	■
White pendant light holder	■	■	■	■	■	■	■
Fridge/ freezer space	■	■	■	■	■	■	■
Space for integrated dishwasher with plumbing and electrics	■	■	■	■	■	■	■
Space for washing machine with plumbing and electrics in kitchen	■	■	■			■	
Space for washing machine with plumbing and electrics in utility				■	■		■

### Bathrooms and en-suite(s)

Ideal Standard contemporary white Tempo sanitaryware	■	■	■	■	■	■	■
Ideal Standard close coupled WC to cloakroom	■	■	■	■	■	■	■
Ideal Standard low profile shower tray with glass enclosure in ensuite		■	■	■	■	■	■
Handheld hair wash attachment in bathroom		■	■	■	■	■	■
Shower over the bath	■						
Choice of standard Porcelanosa wall tiling (splashback, 450mm height over bath, and full-height to shower cubicle)	■	■	■	■	■	■	■
White batten light holder	■	■	■	■	■	■	■

### Doors and Windows

Front door with multi-point security locking system and security chain	■	■	■	■	■	■	■
PVCu double glazing to windows	■	■	■	■	■	■	■
Double glazed PVCu French doors	■	■	■	■	■	■	■
Internal ladder door style pre-primed with Satin finish handles	■	■	■	■	■	■	■
Paving outside French door and path to garage personnel door (where applicable)	■	■	■	■		■	■

### General

White painted walls and smooth white ceilings	■	■	■	■	■	■	■
TV point to lounge and family room (where applicable)	■	■	■	■	■	■	■
Master telephone socket to lounge and study where applicable	■	■	■	■	■	■	■
Ideal combi-boiler with Honeywell heating control and room thermostat(s)	■	■	■	■	■	■	■
Thermostatic valves to all radiators (with the exception of rooms with separate thermostat control)	■	■	■	■	■	■	■
Contemporary lantern to front door and wiring only to the rear door	■	■	■	■	■	■	■
Mains wired smoke detectors with battery back-up	■	■	■	■	■	■	■
Battery powered Carbon Monoxide detector (wall mounted) to be provided for each floor	■	■	■	■	■	■	■
Power and lighting to garage (where in curtilage of the plot)	■	■	■	■	■	■	■
Enclosed fenced rear garden, and garden gate (where applicable)	■	■	■	■	■	■	■
NHBC Buildmark cover	■	■	■	■	■	■	■
First two years' customer service support from Linden Homes	■	■	■	■	■	■	■

■ fitted as standard - included in the property  
★ subject to stage of construction