

THE GREEN

PARK GATE

A PRESTIGIOUS SELECTION OF JUST 25 HOMES

Linden
HOMES

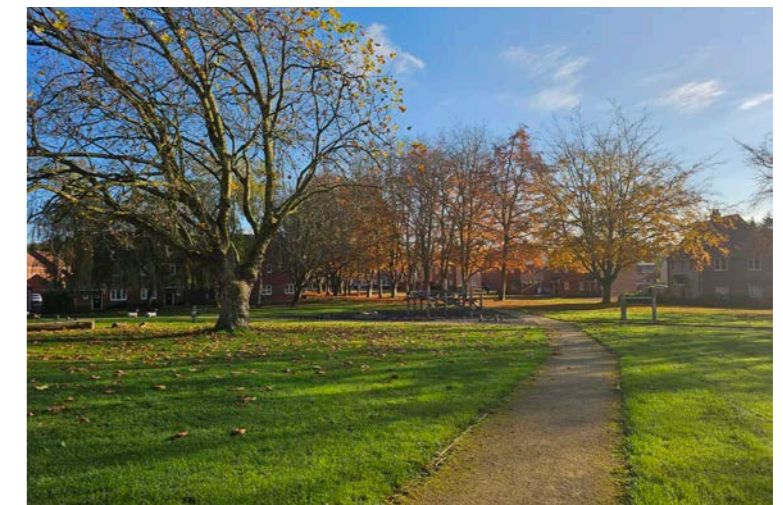


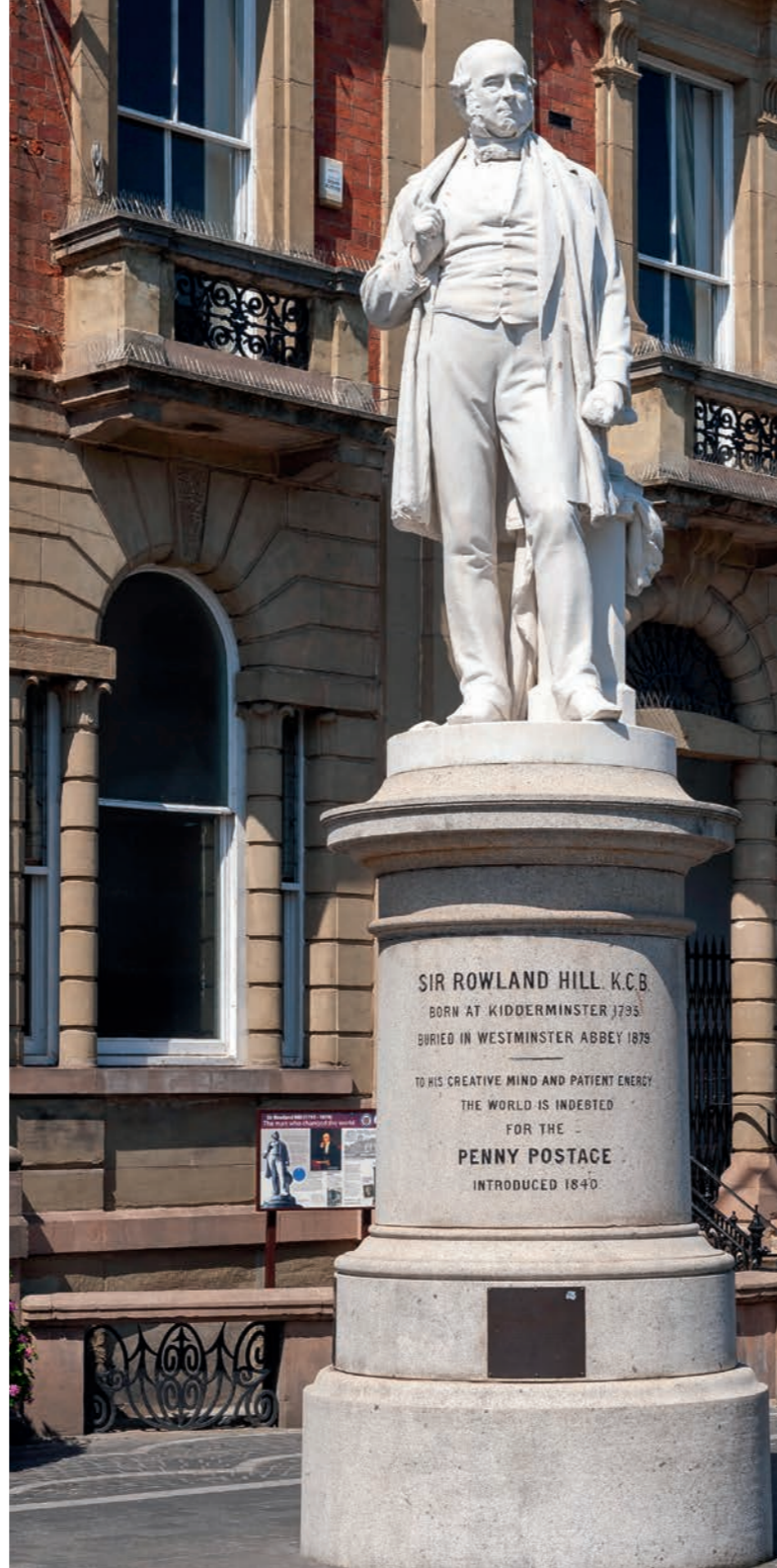
WELCOME TO THE GREEN

The Green at Park Gate, a stunning new phase of 3 and 4 bedroom homes set in a peaceful, secluded location within our Park Gate development in Kidderminster.

Nestled in a secluded position, these stunning 3 and 4 bedroom homes are designed with an enhanced specification for modern living.

Each home will feature a superior finish, with high-quality upgrades that set them apart.





A TASTE OF LOCAL LIFE

The Green provides a quiet village setting with easy access to nearby towns, offering a practical and convenient location for everyday living.

Situated just outside Kidderminster, The Green at Park Gate is perfect for those who appreciate a quieter pace of life, with the convenience of shops, schools, and transport links only a short distance away.

Kidderminster town centre is just a short drive away, offering a wider selection of high street shops, supermarkets, and local services. The area also benefits from excellent transport links, with regular train services to Birmingham and Worcester, making it easy to access both work and leisure options in the wider region.

Outdoors, the surrounding area provides plenty of green space, with countryside walks, cycling routes, and nature reserves all within easy reach.

With its blend of peaceful surroundings, modern convenience, and access to both rural and urban amenities, The Green at Park Gate offers a well-rounded lifestyle that meets the needs of today's homeowners.

Whether you're commuting, exploring the local countryside, or enjoying family life, this is the ideal place to call home.

DEVELOPMENT LAYOUT

The Green boasts a stunning range of homes each with unique views and aspects. Discover your dream home in Kidderminster today.



THE KEMPTHORNE
4 bedroom home



THE PEMBROKE
4 bedroom home



THE PEMBROKE II
4 bedroom home



THE EDMUND
4 bedroom home



THE MACARTHUR
4 bedroom home



THE CROFT
3 bedroom home



THE FRANCIS
3 bedroom home

ss substation
bcp bin collection point
---- boundary line

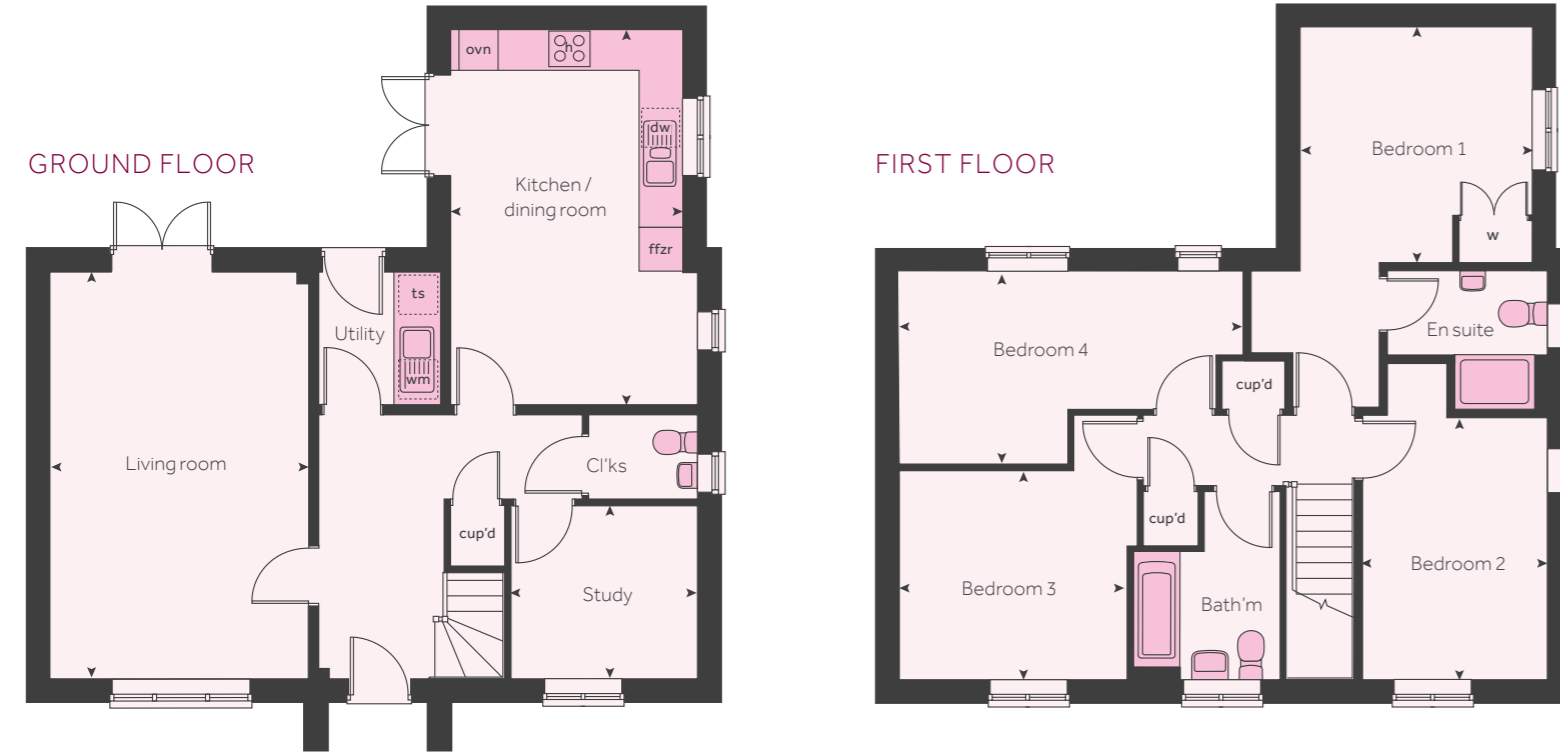
The Green is part of the wider Park Gate development.

The siteplan has been produced for home identification purposes only and is not to scale. The development layout, landscaping and tenure of all dwellings may be subject to change throughout the course of the development. Finishes and materials may vary from those shown on the plan. Please check the details of your chosen plot and house type with the sales consultant. Development layout plan correct at time of production.



THE KEMPTHORNE

4 bedroom home



Ground floor	metres	feet / inches
Kitchen / dining room	5.57 x 3.67	18' 3" x 12' 1"
Living room	6.04 x 3.85	19' 10" x 12' 8"
Study	2.78 x 2.57	9' 2" x 8' 5"

First floor	metres	feet / inches
Bedroom 1	3.49 x 3.45	11' 5" x 11' 4"
Bedroom 2	3.91 x 2.78	12' 10" x 9' 2"
Bedroom 3	3.40 x 3.09	11' 2" x 10' 2"
Bedroom 4	5.12 x 2.86	16' 9" x 9' 5"

h	hob	ts	tumble dryer space
ovn	oven	cup'd	cupboard
ffzr	fridge freezer	w	wardrobe
dw	dishwasher	< >	measuring points
wm	washing machine		

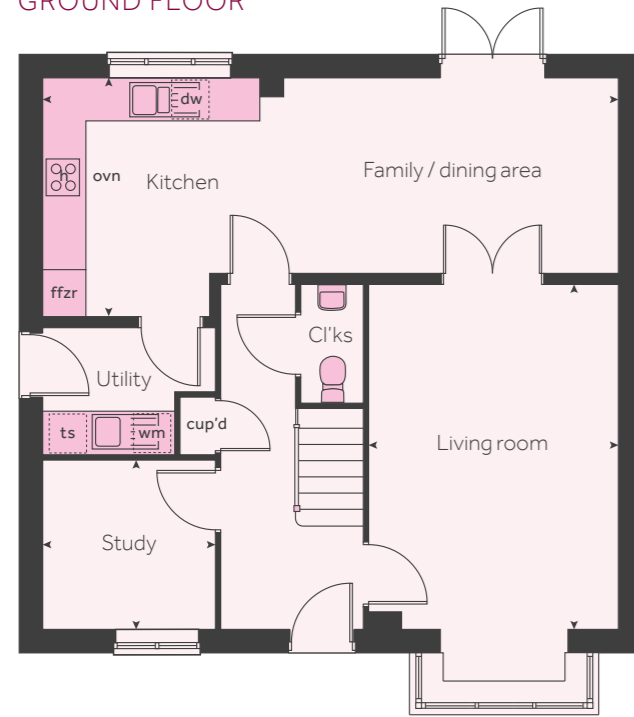
The floorplan has been produced for illustrative purposes only. Room sizes shown are between arrow points as indicated on plan. The dimensions have tolerances of + or -50mm and should not be used other than for general guidance. If specific dimensions are required, enquiries should be made to the sales consultant. The floor plans shown are not to scale. Measurements are based on the original drawings. Slight variations may occur during construction. The illustrations shown are computer generated impressions of how the property may look and are indicative only. External details or finishes may vary on individual plots and homes may be built in either detached or attached styles depending on the development layout. Exact specifications, window styles and whether a property is left or right-handed may differ from plot to plot. Please speak to our sales consultant for specific plot details.



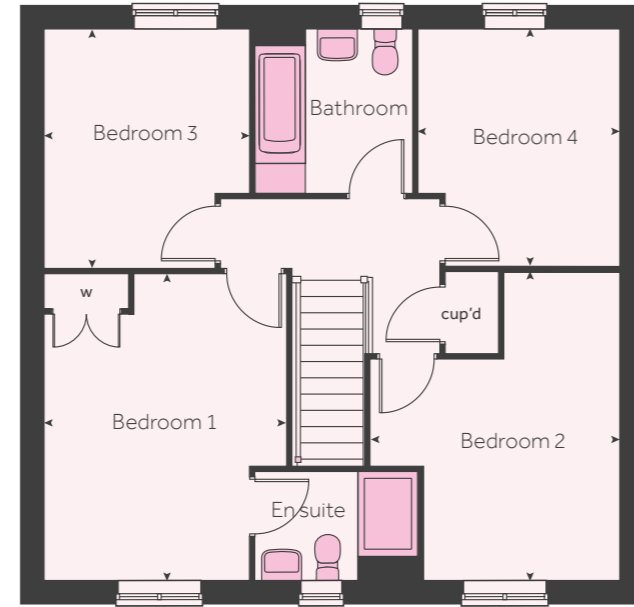
THE PEMBROKE

4 bedroom home

GROUND FLOOR



FIRST FLOOR



Ground floor	metres	feet / inches
Kitchen / dining / family area	8.06 x 3.34	26' 5" x 10' 11"
Living room	4.83 x 3.50	15' 10" x 11' 5"
Study	2.41 x 2.37	7' 11" x 7' 9"

First floor	metres	feet / inches
Bedroom 1	4.29 x 3.40	14' 1" x 11' 2"
Bedroom 2	3.72 x 3.50	12' 2" x 11' 5"
Bedroom 3	3.35 x 2.88	11' 0" x 9' 5"
Bedroom 4	3.92 x 2.82	12' 10" x 9' 3"

h	hob	w	wardrobe
ovn	oven	ts	tumble dryer space
ffzr	fridge freezer	cup'd	cupboard
dw	dishwasher	< >	measuring points
wm	washing machine		

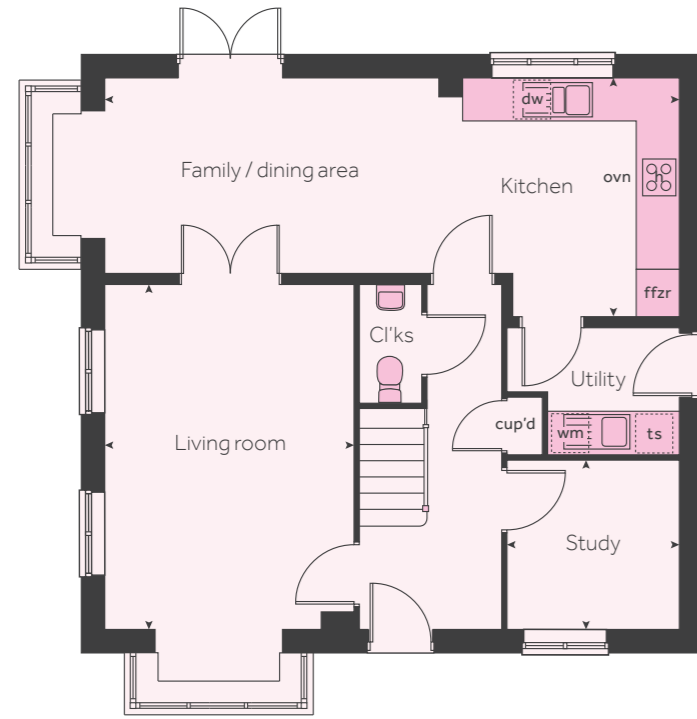
The floorplan has been produced for illustrative purposes only. Room sizes shown are between arrow points as indicated on plan. The dimensions have tolerances of + or -50mm and should not be used other than for general guidance. If specific dimensions are required, enquiries should be made to the sales consultant. The floor plans shown are not to scale. Measurements are based on the original drawings. Slight variations may occur during construction. The illustrations shown are computer generated impressions of how the property may look and are indicative only. External details or finishes may vary on individual plots and homes may be built in either detached or attached styles depending on the development layout. Exact specifications, window styles and whether a property is left or right-handed may differ from plot to plot. Please speak to our sales consultant for specific plot details.



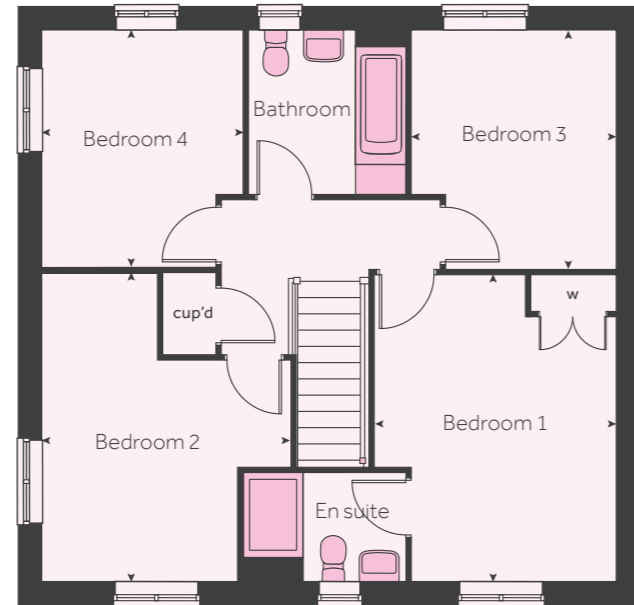
THE PEMBROKE II

4 bedroom home

GROUND FLOOR



FIRST FLOOR



Ground floor	metres	feet / inches
Kitchen / dining / family area	8.06 x 3.34	26' 5" x 10' 11"
Living room	4.83 x 3.50	15' 10" x 11' 5"
Study	2.41 x 2.37	7' 11" x 7' 9"

First floor	metres	feet / inches
Bedroom 1	4.29 x 3.40	14' 1" x 11' 2"
Bedroom 2	3.72 x 3.50	12' 2" x 11' 5"
Bedroom 3	3.35 x 2.88	11' 0" x 9' 5"
Bedroom 4	3.92 x 2.82	12' 10" x 9' 3"

h	hob	w	wardrobe
ovn	oven	ts	tumble dryer space
ffzr	fridge freezer	cup'd	cupboard
dw	dishwasher	◀ ▶	measuring points
wm	washing machine		

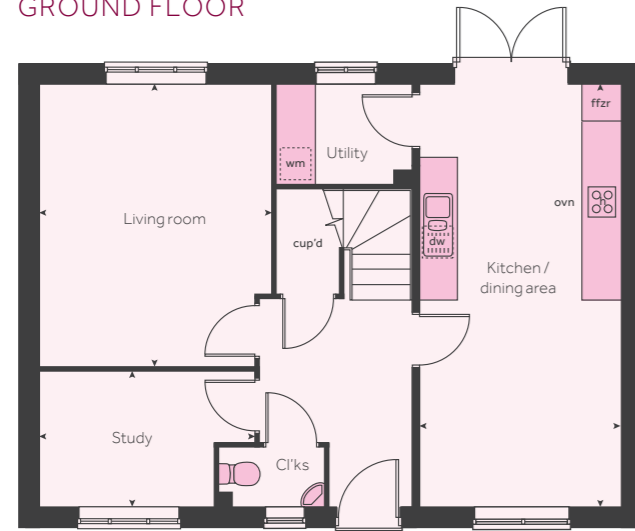
The floorplan has been produced for illustrative purposes only. Room sizes shown are between arrow points as indicated on plan. The dimensions have tolerances of + or - 50mm and should not be used other than for general guidance. If specific dimensions are required, enquiries should be made to the sales consultant. The floor plans shown are not to scale. Measurements are based on the original drawings. Slight variations may occur during construction. The illustrations shown are computer generated impressions of how the property may look and are indicative only. External details or finishes may vary on individual plots and homes may be built in either detached or attached styles depending on the development layout. Exact specifications, window styles and whether a property is left or right-handed may differ from plot to plot. Please speak to our sales consultant for specific plot details.



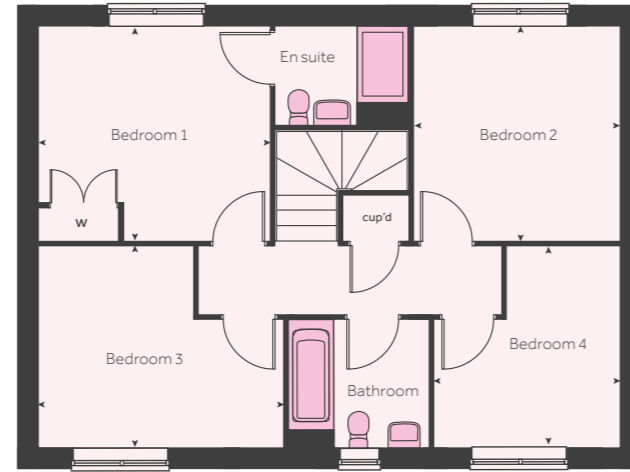
THE EDMUND

4 bedroom home

GROUND FLOOR



FIRST FLOOR



Ground floor	metres	feet / inches
Kitchen / dining area	6.49 x 3.11	21' 4" x 10' 2"
Living room	4.34 x 3.50	14' 3" x 11' 6"
Study	2.63 x 2.06	8' 8" x 6' 9"

First floor	metres	feet / inches
Bedroom 1	3.57 x 3.31	11' 9" x 10' 10"
Bedroom 2	3.31 x 3.17	10' 10" x 10' 5"
Bedroom 3	3.77 x 3.09	12' 4" x 10' 2"
Bedroom 4	3.09 x 2.86	10' 2" x 9' 5"

h	hob	wm	washing machine
ovn	oven	w	wardrobe
ffzr	fridge freezer	cup'd	cupboard
dw	dishwasher	< >	measuring points

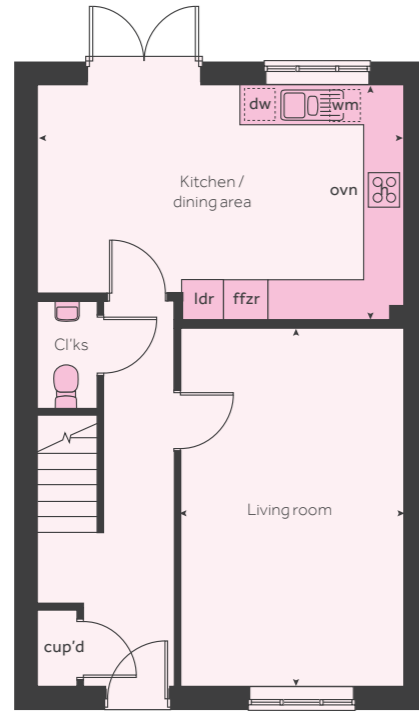
The floorplan has been produced for illustrative purposes only. Room sizes shown are between arrow points as indicated on plan. The dimensions have tolerances of + or -50mm and should not be used other than for general guidance. If specific dimensions are required, enquiries should be made to the sales consultant. The floor plans shown are not to scale. Measurements are based on the original drawings. Slight variations may occur during construction. The illustrations shown are computer generated impressions of how the property may look and are indicative only. External details or finishes may vary on individual plots and homes may be built in either detached or attached styles depending on the development layout. Exact specifications, window styles and whether a property is left or right-handed may differ from plot to plot. Please speak to our sales consultant for specific plot details.



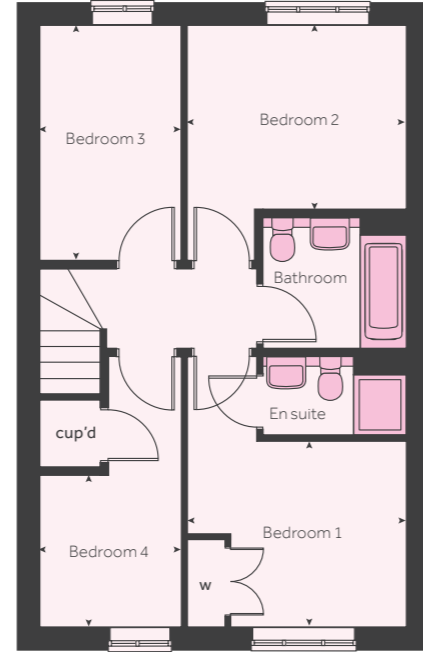
THE MACARTHUR

4 bedroom home

GROUND FLOOR



FIRST FLOOR



Ground floor	metres	feet / inches
Kitchen / dining area	5.47 x 3.51	17' 11" x 11' 6"
Living room	5.30 x 3.27	17' 5" x 10' 9"

First floor	metres	feet / inches
Bedroom 1	3.28 x 2.77	10' 9" x 9' 1"
Bedroom 2	3.28 x 2.76	10' 9" x 9' 1"
Bedroom 3	3.54 x 2.11	11' 7" x 6' 11"
Bedroom 4	2.29 x 2.11	7' 6" x 6' 11"

h	hob	ldr	larder
ovn	oven	w	wardrobes
ffzr	fridge freezer	cup'd	cupboard
dw	dishwasher	< >	measuring points
wm	washing machine		

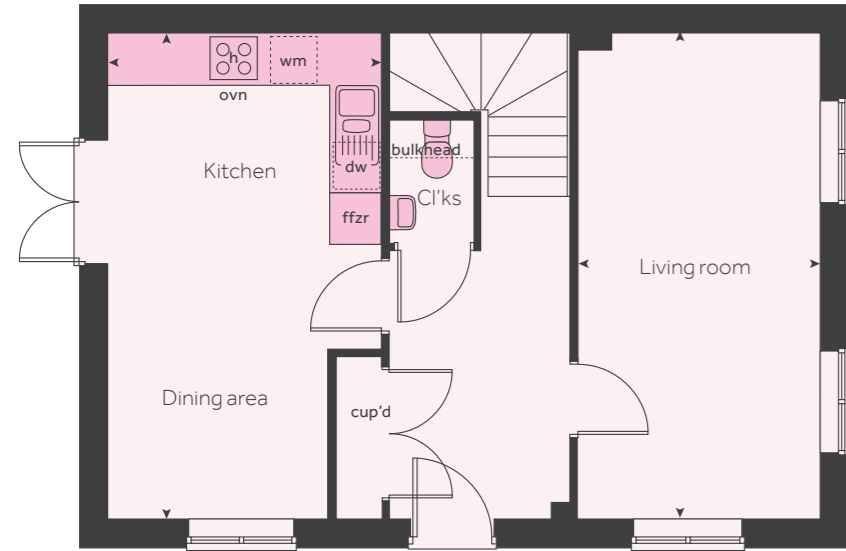
The floorplan has been produced for illustrative purposes only. Room sizes shown are between arrow points as indicated on plan. The dimensions have tolerances of + or - 50mm and should not be used other than for general guidance. If specific dimensions are required, enquiries should be made to the sales consultant. The floor plans shown are not to scale. Measurements are based on the original drawings. Slight variations may occur during construction. The illustrations shown are computer generated impressions of how the property may look and are indicative only. External details or finishes may vary on individual plots and homes may be built in either detached or attached styles depending on the development layout. Exact specifications, window styles and whether a property is left or right-handed may differ from plot to plot. Please speak to our sales consultant for specific plot details.



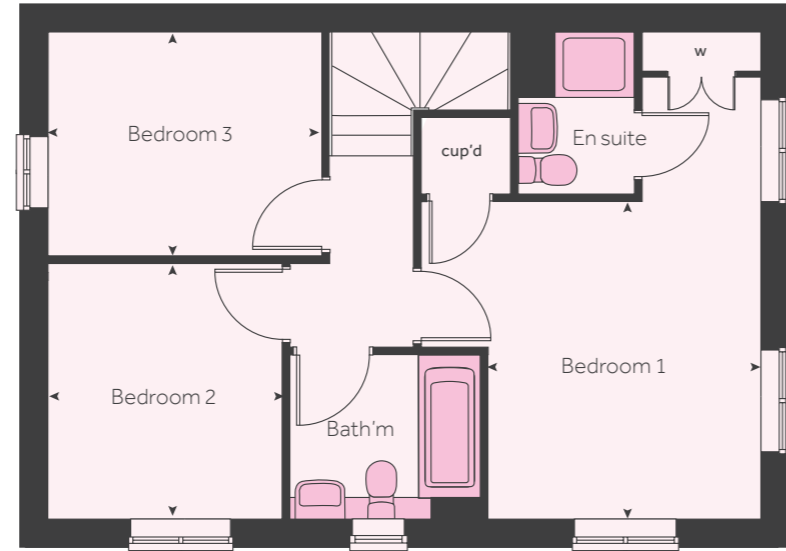
THE CROFT

3 bedroom home

GROUND FLOOR



FIRST FLOOR



Ground floor	metres	feet / inches
Kitchen / dining area	5.81 x 3.02	19' 1" x 9' 11"
Living room	5.81 x 2.69	19' 1" x 8' 10"

First floor	metres	feet / inches
Bedroom 1	5.81 x 3.09	19' 1" x 10' 2"
Bedroom 2	3.08 x 2.69	10' 1" x 8' 10"
Bedroom 3	3.03 x 2.63	9' 11" x 8' 8"

h	hob	wm	washing machine
ovn	oven	w	wardrobe
ffzr	fridge freezer	cup'd	cupboard
dw	dishwasher	< >	measuring points

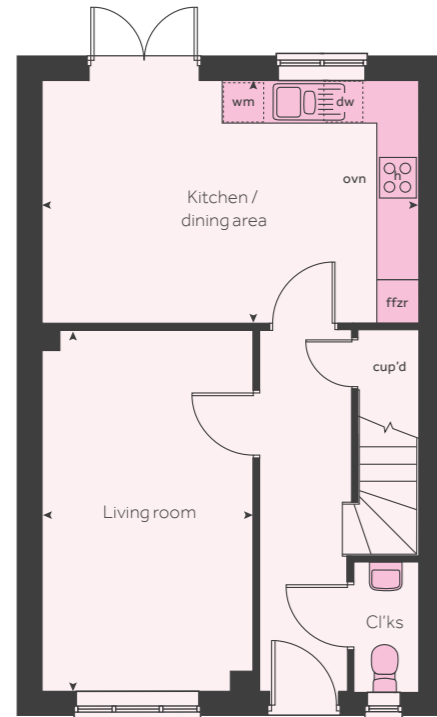
The floorplan has been produced for illustrative purposes only. Room sizes shown are between arrow points as indicated on plan. The dimensions have tolerances of + or -50mm and should not be used other than for general guidance. If specific dimensions are required, enquiries should be made to the sales consultant. The floor plans shown are not to scale. Measurements are based on the original drawings. Slight variations may occur during construction. The illustrations shown are computer generated impressions of how the property may look and are indicative only. External details or finishes may vary on individual plots and homes may be built in either detached or attached styles depending on the development layout. Exact specifications, window styles and whether a property is left or right-handed may differ from plot to plot. Please speak to our sales consultant for specific plot details.



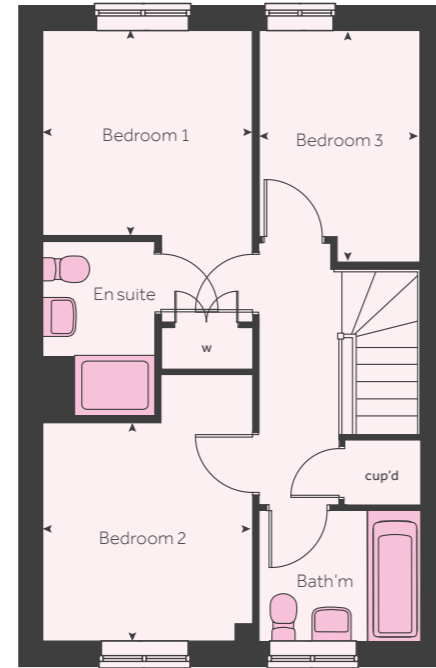
THE FRANCIS

3 bedroom home

GROUND FLOOR



FIRST FLOOR



Ground floor	metres	feet / inches
Kitchen / dining area	4.91 x 2.79	16' 1" x 9' 2"
Living room	5.11 x 2.64	16' 9" x 8' 8"

First floor	metres	feet / inches
Bedroom 1	2.68 x 2.67	8' 10" x 8' 9"
Bedroom 2	3.06 x 2.67	10' 0" x 8' 9"
Bedroom 3	2.55 x 2.15	8' 4" x 7' 1"

h	hob	wm	washing machine
ovn	oven	w	wardrobe
ffzr	fridge freezer	cup'd	cupboard
dw	dishwasher	< >	measuring points

The floorplan has been produced for illustrative purposes only. Room sizes shown are between arrow points as indicated on plan. The dimensions have tolerances of + or -50mm and should not be used other than for general guidance. If specific dimensions are required, enquiries should be made to the sales consultant. The floor plans shown are not to scale. Measurements are based on the original drawings. Slight variations may occur during construction. The illustrations shown are computer generated impressions of how the property may look and are indicative only. External details or finishes may vary on individual plots and homes may be built in either detached or attached styles depending on the development layout. Exact specifications, window styles and whether a property is left or right-handed may differ from plot to plot. Please speak to our sales consultant for specific plot details.





BEAUTIFUL SPACES FOR YOU TO **ENHANCE**

There's nothing more exciting than reserving your new Linden home.

With Enhance, there is even more reason to look forward to moving day.

Enhance offers you the chance to personalise your new home with a wide range of options and upgrades available, it suits your needs and wants perfectly and so moving day can't come quick enough!

From customising your kitchen with stylish cupboards and worktops to having the latest modern appliances make your home more your own with **Enhance**.

Choose your tiles in the bathroom or complete your bedroom with fitted wardrobes. Whatever your style, it's your canvas to make your own and allow your personality to sing.

The best thing is that you don't have to decide all this at the time of reserving - you can think about how you want your new home to look in the comfort of your current home.

The availability of items is subject to the stage of build, and can vary by development and house type. Our sales consultants will be happy to provide you with guidance.

We're here to help you make it completely unique, so express yourself with **Enhance**.

The availability of items is subject to the stage of build and can vary by development and housetype. Our sales consultants will be pleased to provide you with a full brochure and guidance.

A HOME DESIGNED WITH YOU IN MIND

We are constantly reviewing our houses and ensuring they are everything that our customers want in a home. We are proud to have developed and launched a new range of homes.

These homes have been created to embrace modern design and styling, whilst retaining classic architectural traditions

An integral part of the design process for our new range of homes was to ensure they have a real wow factor and eye-catching kerb appeal. From designing external elevations to create attractive street scenes through to maximising the flow and size of the rooms, the homes include a variety of features to capture the attention.

The size, positioning and number of windows in our new housing collection have created bright and airy homes, this mixed in with the higher ceilings gives your property a spacious feel.

The flow and layout of the new homes has been a key consideration to accommodate today's lifestyles, with a focus on future living.

With the kitchen at the heart of the home, impressive family spaces have been included within them to create sociable living areas, while attention on bedroom 1 and en suites has given the homes added desirability.

Many of the properties include popular bi-fold doors helping to bring the outside in and enhance the gardens as an extended living area.

Scan me
for directions



THE GREEN

Park Gate, Lea Castle Drive,
Lea Castle,
Cookley,
Kidderminster
DY10 3PU



Every care has been taken in the preparation of this brochure. Linden Homes operates a programme of continuous product development. Features, internal and external, may vary from time to time and may differ from those shown in this brochure. The development layout, landscaping and tenure of all dwellings may be subject to change throughout the course of the development.

Computer generated images, maps, photography, and imagery are intended for illustrative purposes. Features, designs, materials, and visual depictions must be treated as general guidance only. Please speak to a sales consultant for details of specific homes.

Vistry South West Midlands region

2 Bromwich Court, Highway Point, Gorsey Lane, Coleshill, Warwickshire B46 1JU. Telephone: 01675 469 290

Produced by the aVistry Group Design Studio.

When you have finished with this brochure please recycle it.

DS11580 / 11.24



Linden
HOMES